

IN THIS ISSUE: Technology & Innovation page 29

Bulletin

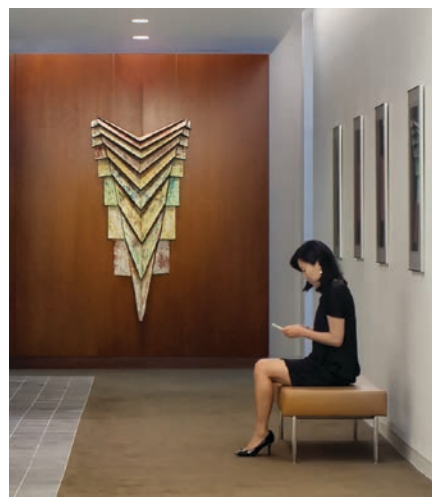
THE OFFICIAL PUBLICATION OF THE WASHINGTON BUILDING CONGRESS



**2019 Annual
WBC Craftsmanship
Awards** page 11



A TESTIMONIAL
TO EXCELLENCE



CAPITOL
WOODWORK

Premium Grade Architectural Woodwork and Casework

Acoustical Wall and Ceiling Treatments

Hospital and Laboratory Casework and Lockers

Architectural Metal, Stone and Solid Surfacing

C

hairman's letter

WBC Corporate Sponsor



CHAIRMAN OF THE BOARD
Mike Baruccheri, AECOM Tishman
 CHAIRMAN-ELECT
Brett Snyder, GreenBench Companies

1ST VICE CHAIRMAN
W. Emerson Teer, DPR Construction

2ND VICE CHAIRMAN
Chuck Claar, R.W. Murray Company

3RD VICE CHAIRMAN
Bob Freas, Exponent

TREASURER
Greg Koger, Holland & Knight

SECRETARY
Sean Frazier, Datum Contracting East

IMMEDIATE PAST CHAIRMAN
Dan Buckley, Garney Construction, Inc.

DIRECTORS
Ken Ellis, RK&K
Bob Frew, Balfour Beatty Construction
Christine Heffernan, HESS Construction
Mike Holland, Boston Properties
Tara McCarthy, Gael Force Consulting
Kelly McGuire, Ruppert Landscape
Melissa Nelson, Carrier
Rob Wenger, WCS Construction

PRESIDENT & CEO
Steven J. Kenton

ASSOCIATE DIRECTOR
Rita F. Reis

Washington Building Congress is a nonprofit association made up of professionals from a variety of disciplines, all with an active interest or involvement in the Washington Metropolitan Area's real estate, design, and construction community. The organization was established in 1937 to represent the collective interests of its members by providing education and networking opportunities and by promoting the advancement of the building industry. For additional information about membership, joining a committee or the WBC Bulletin, call (202) 293-5922 or visit us on the web at www.wbcnet.org.

Bulletin is published 6 times a year by Washington Building Congress, Inc. The articles in this publication are the opinions of the authors and do not necessarily represent or reflect the policies or opinions of Washington Building Congress. Copyright 2019. All rights reserved.

Washington Building Congress
 1100 Vermont Avenue, NW, Suite 700, Washington, DC 20005
 T: (202) 293-5922 • F: (202) 429-1922 • www.wbcnet.org



In this special edition of the *Bulletin*, we proudly feature the 63rd annual WBC Craftsmanship Awards program. This year, 81 winning entries were selected from the 272 outstanding nominations received. Over 1,000 people gathered on March 29 to recognize the hard work of over 400 individual craftsmen. We also inducted another Craftsman Hall of Fame class and announced the Star Awards winners. Over 12,000 men and women have won Craftsmanship Awards over the last 63 years and there are now 41 proud members of the Craftsman Hall of Fame. I want to thank everyone who supported this essential industry event, especially our deserving craftsmen and generous sponsors. A complete list of current and past winners is available at wbcnet.org.

I would like to personally recognize the 2019 Craftsmanship Awards Committee, Chair Karen Cotton (HITT Contracting), Vice-Chair Greg LaRosa (Dynalectric Company) and Board Liaison Christine Heffernan (HESS Construction) for an outstanding year. Thank you also to all of the judges and volunteers who help make this event a tremendous success. The WBC Craftsmanship Awards and Hall of Fame programs are of utmost importance to the industry and set our association aside from other commercial construction groups.

The Community Services Committee is holding the annual WBC Rebuilding Together Workday on Saturday, April 27 in Burke, Virginia. Over 50 volunteers are expected to join us for this rewarding day of giving back to those less fortunate in our region. The June-July *Bulletin* will highlight all of the individuals and companies involved with the project and feature photos from the workday. Special thanks go to House Captain Vanessa Carrion (Gilbane), Co-Captain Andrew Tomlinson (G&M Services), Safety Coordinator Micheline Diakite (Boston Properties) and Trash Coordinator Bridgette McCarthy (BMAC Consulting Group). Thank you also to the Community Services Committee, Chair Edward Dudlik (Oppenheimer) and Board Liaison Rob Wenger (WCS Construction).

The Membership Services Committee hosted the March 13 St. Patrick's member recruitment and networking event at great new venue, Fado Irish Pub in Chinatown. We are on pace to again enjoy a record setting membership year, with a strong combination of great retention and new member recruitment. Please speak with someone you know in the industry who is not a WBC member and encourage them to join. Thank you to the Membership Services Committee, Chair Rush Seale (Insurance Associates), Vice-Chair Melissa Farrar (Washington Gas) and Board Liaison Kelly McGuire (Ruppert Landscape) for another impressive membership year.

Mark your calendars for the 82nd annual WBC Golf Outing on Monday, June 10, at Lansdowne and Belmont golf clubs. Also take a moment to review the sponsorship opportunities available for this high profile industry event, widely considered to be the premiere tournament of the year. Thank you to 2019 Tournament Sponsor, Siemens Industry, for their unwavering support of this event. This is an excellent opportunity to showcase your business, entertain clients and reward key employees. The 2019 Golf Outing Committee is being co-chaired again this year by Brian Lockwood (The Snead Company) and Bill Voigt (Siemens Industry).

I look forward to seeing you at an upcoming WBC program or event. Thank you for your active participation and ongoing support of our great association!

Best regards,

Mike Baruccheri
 WBC Chairman of the Board



RECENT AWARDS



Metro Washington & Virginia Chapters of ABC
Masonry Subcontractor of the Year
2014, 2016, 2017 & 2018



Metro Washington & Virginia Chapters of ABC
STEP Award, Gold Level
2014, 2015, 2016, 2017 & 2018



ABC National
Excellence in Construction, Eagle Award
2017 Parc Meridian at Eisenhower



Washington Building Congress
Craftsmanship Award
2014 77H, Washington, DC
2017 Parc Meridian at Eisenhower



ASA Metro Washington
2014 Carson V. Carlisle Jr.
Safety Award



Metro Washington & Virginia Chapters of ABC
Excellence in Construction Award
2017 Parc Meridian at Eisenhower Station
2018 The Signature at Reston Town Center

PARC MERIDIAN
at Eisenhower Station

Architect:
Architects Collaborative, Inc.

General Contractor:
Paradigm Contractors, LLC


Masonry Construction

2273 Research Boulevard | Suite 550
Rockville, Maryland 20850
(301) 926-9600



© Ron Solomon Architectural Photography

T e l l i g e n t M a s o n r y . c o m



Industry Report

DAVIS Announces Company-Wide Promotions

James G. Davis Construction Corporation (DAVIS) announced several new promotions. These employees will take on new strategic roles with a focus on redefining the way people experience construction.

Jim Davis, President + CEO, will continue to lead the company alongside firm principals Dennis Cotter and Bill Moyer. "These strategic promotions not only demonstrate commitment to our employees, but also makes us instrumental in continuing to provide the highest caliber of service to our clients," stated Davis. "We are so fortunate to have such a strong and dedicated team of long-term DAVIS leaders."

Executive Vice Presidents

Dominic Argentieri, Ben Cohen and **Ron Juban** have each been named Executive Vice President. Argentieri, Cohen and Juban collectively excel in providing a holistic, collaborative and detailed approach to the complex, large-scale projects they proactively manage. They lead by example and apply their expertise to build success for all at every stage of a project. They will continue to foster DAVIS' core values and culture while driving the company onward and upward through their leadership, strategic vision, and in-depth skill sets.

Vice President

With more than 18 years in project management and operations experience including recent time in preconstruction and estimating at DAVIS, **Jon Ellen** has been promoted to Vice President. With his experience in managing extremely technical building projects, Ellen excels at identifying materials and processes that add the most value to meet project goals. In his new role, Jon will continue to support the Interior Estimating + Preconstruction group as he transitions into his new role with Operations.

Director – Virtual Construction

Julien Bartolo has been named Director – Virtual Construction. With over 20 years of construction experience, Bartolo uses the latest technologies and tools to build with maximum efficiency and minimal risk. Using the latest BIM software and methodologies, he leads Operations teams in the coordination and installation of work – streamlining information, anticipating site coordination issues and determining project phasing.

Promotions – Operations

Senior Superintendent

- **Nick Oswald**

Superintendent

- **Mike Rowe**

Senior Project Manager

- **Christie Hurley**
- **Chris Jasiota**
- **Kendall Mahan**

Project Manager

- **Peter Cooke**
- **Lauren Mihara**

Project Superintendent

- **Tyler Brown**
- **Dylan Hanson**

Project Coordinator

- **Brandon Jovel**

Assistant Project Manager

- **Matt Koss**
- **Allison Townes**

Promotions – Non-Operations

- **Susan Ager**, Claims Analyst
- **Leticia Brice**, Pursuit Manager
- **Megan Brown**, Marketing Communications Specialist
- **Matt Carter**, Senior Project Scheduler
- **Melyna Cruz**, Marketing Communications Coordinator
- **Michael DeAngelis**, Learning + Development Manager
- **Tom Firestone**, Assistant Safety Manager
- **Hillary Ghent**, Senior Counsel
- **Alexander Hershey**, Controller
- **Lauren Howard**, Senior HR Generalist
- **Callie McLenagan**, Estimating + Preconstruction Engineer
- **Yvonne Medrano**, Site Logistics Coordinator

IA/MMA Welcomes Jennifer Wood as a Senior Claims Consultant



Jennifer Wood

Insurance Associates/MMA announced that they are expanding their dedicated claims team with the addition of **Jennifer Wood**. Wood comes to IA/MMA with

substantial experience that will allow her to champion their clients' workers compensation needs.

Wood has over 20 years of experience handling workers' compensation claims. Prior to Insurance Associates/MMA, she worked with several major insurance carriers as an investigative case manager, lost time adjuster and resolution/litigation specialist. She has also worked for a large defense workers' compensation firm as a paralegal. Wood's prior experience as Senior Workers' Comp Advocate at a large Baltimore, MD agency further enhances her strengths as a champion for IA/MMA's clients.

At IA/MMA, Wood is responsible for ensuring that workers' compensation claims are managed appropriately from first report through settlement. She holds regular claim review meetings with clients to assist them in reducing their reserves and costs while collaborating with IA/MMA's carriers to facilitate excellent claim resolutions and service. Wood holds her MD Property & Casualty license.

Put Your Industry News
Where the Industry Will See It.

Bulletin

Contact Rita Reis at reis@wbcnet.org

Industry Report



Briglia McLaughlin Joins Smith Currie

Smith, Currie & Hancock LLP announced that at the first of the year, BrigliaMcLaughlin, PLLC, merged into Smith Currie.

Founder Shannon Briglia said, “As we evaluated the potential of merging with Smith Currie, we quickly determined that both firms were focused on the same goals upon which we built BrigliaMcLaughlin – delivering outstanding legal representation, nurturing client relationships, and growing and supporting our people – making the decision to join forces very natural. We are excited to explore how we can better serve the needs of our clients from our new and expanded platform.”

Co-Founder Lauren McLaughlin said, “As far as our clients are concerned, this merger is all upside and no downside. Joining forces with Smith Currie means we have now grown our bench to include the top construction law firm in the country.”

According to Bob Chambers, Smith Currie’s managing partner, “We could not be more pleased that Shannon and Lauren are joining us, as well as everyone at BrigliaMcLaughlin. We are now even better positioned to serve our clients in the DC and Mid-Atlantic region, as well as nationally.”

Shaw and Koagel Promoted at WCS Construction, LLC



Jon Koagel

WCS Construction, LLC announced the recent promotion of **Ken Shaw** to Project Executive and **Jon Koagel** to Project Manager.

Shaw has been with WCS Construction for over 15 years and has been the senior project manager on many notable projects including THEARC Phase II when he first started with WCS and the recently completed THEARC Phase III project. He was also senior project manager on many others including, Shipley, Southview, Salvation Army, 3333 Wisconsin Ave, Sheridan Station Phase I Apartments and City Homes, and 3400 Pike.

In his new role as Project Executive, Shaw will be providing oversight and leadership to the City View Project, Takoma Place Apartments, and the upcoming Petworth Station Apartments renovation.

Koagel joined WCS Construction just over five years ago as an assistant project manager on the challenging Lincoln at Tinner Hill project. He quickly became an invaluable asset to the project team and the company. Not shy of challenges, hard work and attention to detail, Koagel transitioned to the \$112 million 901 H Street project with ease and has stepped up and stepped in to do what it takes to support the team on the company’s largest project to date.

“Jon is very deserving of this promotion and is excited to keep learning and taking on new responsibilities. Demonstrating his dedication to the project, WCS, and professional growth, I particularly have noticed that Jon consistently pursues work beyond his level and he is so deserving of this promotion,” said Dave Kutchma, Project Executive, WCS Construction, LLC.



Industry Report



Steele Foundation LLC of McLean, Virginia, was one of just 15 Greater Washington, D.C. area companies recently honored in the fourth annual Washington Business Journal Family-Owned Business Awards competition. Accepting the award are President J. Andrew (Andy) Steele (second from left) and his father Ronald Steele (second from right), who is the company's Founder and Managing Member. Flanking them are Washington Business Journal Editor-in-Chief Douglas Fruehling (far left) and Publisher Peter Abrahams (far right). Award recipients were honored at a February 28 event in Washington, DC.

Steele Foundation LLC Honored as a Top Family-Owned Business in Greater Washington, DC

The *Washington Business Journal* has honored 51-year-old Steele Foundation LLC as one of the top multi-generational family-owned businesses in Greater Washington, in its fourth annual Family-Owned Business Awards competition. Steele Foundation is one of only 15 family-owned businesses in this region to receive this year's honor, which exemplifies "overall excellence, innovation, ethics and philanthropy."

Steele Foundation occupies a tight vertical portion of the marketplace in which "there are only about five firms that specialize in engineered foundation construction," says President Andy Steele. "Ours is a particularly hazardous business because dealing with difficult ground conditions is one of the riskiest parts of any construction project. Our work requires highly trained, licensed and

experienced professionals to design and implement excavation support and shoring systems for large underground basements and parking facilities."

Steele Foundation is the classic American success story of a small, family-owned niche construction company that has flourished for more than half a century--despite recessions, changes in technology, building booms and busts, industry competition for talent and skills, increasingly difficult permitting processes and expanding government regulation. Steele Foundation has established itself as the go-to firm for architects, engineers, contractors and developers who know that engineered foundation sheeting, shoring and underpinning can make the critical difference in the success of their projects.



THE PRACTICE OF SOLUTIONS

Construction | Government Contracts
Real Estate Transactions

Ranked by **Chambers USA** as one of the leading Construction law firms in Washington, DC



5335 Wisconsin Avenue, NW Suite 400
Washington, DC 20015
202-244-4264 ♦ www.asmlaw.com

Industry Report

HITT Promotions Announced

HITT Contracting Inc. recently announced the promotion of several of its local team members, including:

Vice Presidents



Joe Kmiecinski
Vice President of
Site Operations



Rob Craig
Vice President of
Site Operations



Aaron Martens
Vice President,
Technology

Project Executive

- **Tom Grab**, Hospitality
- **Matt Pope**, Government
Luis Sirotzky, Corporate Office-Base Building

Senior Project Managers

- **Luca Covi**, Corporate Office-Base Building
- **Scott Dutton**, Corporate Office-Interiors
- **Matt Hajec**, Technology
- **Lindsay Martens**, Corporate Office-Interiors
- **Andrew Peeler**, Technology
- **Josh Shelton**, Corporate Office-Base Building
- **Chris Weismiller**, Technology

Full Service Electrical Contractor Specializing in the Following Services:

- 24-hour Emergency Service
- Preventive Maintenance Services
- Infrared Thermography Scan
- Lighting Retrofits
- Estimating/Budget Services
- Mission Critical Facility Maintenance
- Service Contracts
- Generator/UPS Installations
- Design-Build/Assist Capabilities
- 3D Modeling
- Fire Alarm Tenant Fit-out
- Fire Alarm Retrofits of Existing Systems
- Fire Alarm/Sprinkler Testing & Service

Celebrating 50+ Years of Gold Standard Service!



Dynalectric

An EMCOR Company

22930 Shaw Road, Suite 100, Dulles, VA 20166

Call: 703-724-3500

Visit: www.dynalectric-dc.com



WT
WHITING-TURNER

Construction Management | General Contracting | Design-Build | Specialty Contracting

6305 IVY LANE SUITE 800 | GREENBELT, MD 20770 | 301.656.7800

Industry Report

Corporate Resources

- **Amy Almazar**, Graphics Senior Associate
- **Mark Armentrout**, Project Accounting Senior Associate
- **Nikki Arnold**, Payroll & Benefits Senior Associate
- **Karen Cotton**, Director of Pursuits
- **David Davis**, Preconstruction Manager
- **Michelle Decker**, Director of Project Accounting
- **Katlyn Egan**, Human Resources Senior Associate
- **Joanne Fulmer**, Administrative Services Senior Associate
- **Glen Harrison**, IT Senior Associate
- **Nate Haugh**, Project Accounting Manager
- **Mariama Jarr**, Project Accounting Senior Associate
- **Lauren Kim**, Pursuits Senior Associate
- **Megan Lantz**, Vice President of Corporate Business Development
- **Mike Nam**, IT Senior Associate
- **Jennifer Nguyen**, Corporate Accounting Senior Associate
- **David Pfirrmann**, Preconstruction Executive
- **Dayna Powderly**, Pursuits Manager
- **Courtney Reed**, Graphics Senior Associate
- **Andrew Shaw**, Safety Senior Manager
- **Tejas Thakkar**, IT Senior Associate
- **Adrian Thomas**, Corporate Accounting Associate
- **Julia Won**, Project Accounting Senior Associate



ELEVATING THE BUSINESS OF BUILDING

Ranked #2 Largest General Contractor in Greater D.C. by the Washington Business Journal

> LEARN MORE AT HITT.COM

HITT



SITE PREPARATION DEMOLITION EXCAVATION



2851 V Street NE - Washington DC, 20018

202-882-2600 - FAX 202-882-5330 - www.goldinandstafford.com

Industry Report

Project Managers

- **David Arvizo**, Corporate Office-Interiors
- **John Brilliant**, Technology
- **Nick Cunningham**, Technology
- **Nicole Dulmer**, Corporate Office-Interiors
- **Jamar Frank**, Hospitality
- **Erik Gerloff**, Corporate Office-Interiors
- **Zach Gard**, Corporate Office-Base Building
- **Chris Jewell**, Technology
- **James Keesling**, Corporate Office-Base Building
- **Robert Klipfel**, Hospitality
- **Lela Lattany**, Corporate Office-Interiors
- **Greg Medlin**, Technology

- **Brittany Otis**, Corporate Office-Base Building
- **Felipe Rojas**, Healthcare
- **Kurt Rager**, Corporate Office-Base Building
- **Mark Rainey**, Technology
- **Wil Reynolds**, Healthcare
- **Nick Schmitt**, Government
- **Michelle Yanda**, Corporate Office-Interiors

Site Operations

- **Kevin Chappell**, Superintendent
- **Austin Clark**, Superintendent
- **Bogdan Cozma**, MEP Senior Superintendent
- **Collin Flaherty**, Superintendent

- **CJ Grish**, Superintendent
- **Fidel Hernandez**, Superintendent
- **Kyle Hughes**, Superintendent
- **Mark Hahr**, Superintendent
- **Cris Landefeld**, MEP Superintendent
- **Max Nellis**, Superintendent
- **Rick Norsworthy**, Superintendent
- **Jason Reynolds**, Superintendent
- **Michael Stitely**, Superintendent
- **Juan Torres**, Senior Superintendent
- **George Warring**, Senior Superintendent
- **Bill Woycik**, MEP Senior Superintendent
- **Erick Zambrana**, Senior Superintendent



Our people are building and developing what matters in the Washington, D.C. area.

SKANSKA

usa.skanska.com

MORIARTY



GENERAL CONSTRUCTION | PRECONSTRUCTION CONSULTING | CONSTRUCTION MANAGEMENT

PREDICTABLE RESULTS

WWW.JMA-VA.COM

For half a century, engineering a strong foundation of trusted partnerships.

As the regional go-to expert in engineered foundation construction, Steele Foundation, LLC is big enough to be the first choice to resolve difficult and hazardous engineering and construction challenges—and small enough to provide agile, customized partnerships.

Engineered foundation construction: it's what we do, and we do it best.

- Washington Building Congress Craftsmanship Award, 2019
- *Washington Business Journal* Family-Owned Business Award, 2019

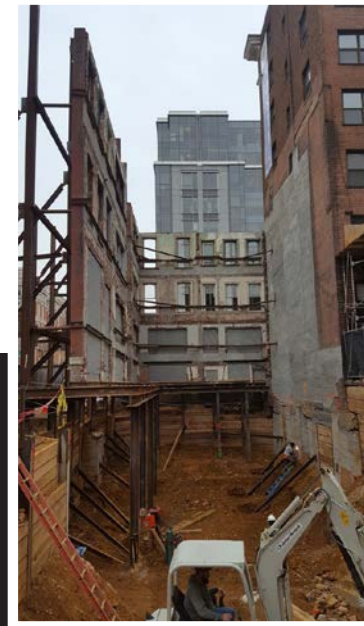


1420 Beverly Road, Suite 380
McLean, Virginia 22101

202-342-1194

morgan@steelefoundationllc.com

steelefoundationllc.com



Put Steele in the foundation of your next project.



2019 Annual WBC Craftsmanship Awards

Celebrating
Our Region's
Best Craftsmen
and Women



Michael Baruccheri
WBC Chairman of the Board



Watch videos of
Star Award Nominees and
Craftsman Hall of Fame Inductees:
<https://www.youtube.com/user/TheWBCdc/videos>

The Washington Metropolitan area's building industry community came together on March 29th to recognize the area's outstanding craftsmen and women at the Washington Building Congress' 63rd Annual Craftsmanship Awards banquet and ceremony. More than 12,300 individuals have been honored over the past 63 years for their efforts on over 3,200 award-winning projects around the region.

"As WBC's Craftsmanship Awards program has grown in visibility, our focus on individual craftsman has consistently moved forward," said Michael Baruccheri, WBC's 81st Chairman of the Board. "We are proud to host the premiere awards program recognizing the individual contributions of craftsmen working on projects day in and day out."

To kick off the evening's honors, the WBC Craftsman Hall of Fame's inductees for the evening were announced. Up to five deserving craftsmen or women may be nominated by the WBC Craftsmanship Awards Committee and approved by the WBC Board of Directors to be inducted in the Craftsman Hall of Fame. Selection of the Hall of Fame inductees is based on the number of awards an individual has received, the individual's time in the building industry, and other factors that may be relevant.

The 2019 Hall of Fame inductees were (left to right):

John Bryant – Woods & Plastics
Bill Rhodes – Electrical
Mike Wondoloski – Masonry



"The Hall of Fame provides a highly visible way to recognize the best of the best in our industry," said Baruccheri.

This year, 272 nominations were received in ten trade categories from sitework to finishes. Each entry



2019 Annual WBC Craftsmanship Awards



was judged in January of this year by a team made up of three to five individuals with a wide range of industry experience, and each member evaluated the entries independently. Team members represented a broad cross-section of the construction industry, including architects, interior designers, general contractors, subcontractors, construction consultants, and engineers. All evaluations were compiled, results tallied, and 81 winning entries were identified based upon the judges' scoring.

"We would like to acknowledge and thank all of you who participated as judges this year. Your support is a vital component to the success of this event," said Greg LaRosa (Dynalectric Company), Craftsmanship Awards Committee Vice Chair.

A complete listing of the winning projects follows, and a complete list with project descriptions is available online at www.wbcnet.org.

Very few companies had winning craftsmen on more than one or two projects, however craftsmen from **Mona Electric Group** were recognized for six projects and craftsman **J.E. Richards Electric, Inc.** received awards on five projects. **Clark Construction Group, LLC** was general contractor on 26 projects, including joint ventures **Capital Rail Constructors (Clark & Kewit Joint Venture)** and **Clark/Christman, a Joint Venture**. **DAVIS Construction** was general contractor on 17 projects.

Following the selection of the award winners, a separate group of Star Award evaluators representing different industry perspectives and disciplines independently evaluated the Star Award nominees. In 1992, Craftsmanship Awards Chairman Darrel Rippeteau created the Star Awards. Star Award winning craftsmen encompass the key characteristics of all Craftsmanship Award winners and exhibit the highest level of focus on the essence of excellence.

This year, eight remarkable entries were elevated to Star Award nominees for demonstrating the highest level of quality and exceeding the awards criteria to achieve a level defined as "Exceptional." From these, the Star Award winners for Visual Excellence, Technical Excellence and Excellence in the Face of Adversity were selected.

Congratulations to all of this year's winners!

The Star Award for Excellence in the Face of Adversity

was presented to **Juan Hernandez, Douglas Joya, Ricardo Moscoso, Blake Pappas, Michael Pappas and Tranquilino Villegas** with **Telligent Masonry, LLC** for their **Unit Masonry** work at **The Signature at Reston Town Center**.



The Star Award for Technical Excellence

was awarded to the team of **Gilmer A. Guevara Aleman, William E. Orellana, Jose Alfredo Ornelas and Thomas F.J. Palovich** with **R. Bratti Associates** for their outstanding **Interior Stone and Marble** work at **Capital One Block B**.



The Star Award for Visual Excellence

goes to **Roberto Castro, Gino Contreras, Jordan Eustaquio, Juan Flores, Roberto Jaramillo and David Orazco** with **Anning Johnson** for **Drywall** at **Nestlé Headquarters**.



2019 Craftsmanship Awards

Following are the names of all the Craftsmanship Award winners along with the projects on which they worked, their employers, and where applicable, the general contractors and other key project team members. Star award nominees are marked with a ★.



CONCRETE

CAST-IN-PLACE CONCRETE

Walter Canales, Julio Estrada, Santos Fuentes, Wigberto Hernandez, Miguel Mendez, Jose Paz – Clark Concrete Contractors, LLC

Project: Inova Proton Therapy Center, Falls Church, VA

Architect: Stantec

Engineer: Goldstein-Milano, LLC

General Contractor: Clark Construction Group, LLC

Elmer Abarca, Emilio Calderon, Kelvin Castillo, Jose A. Diaz, Jose Garcia, Santos Torres – The Lane Construction Corporation

Project: Kennedy Center Expansion, Washington, DC

Architect: Steven Holl Architects

Engineer: Silman

General Contractor: The Whiting-Turner Contracting Company

Gustavo Chavarria, Ian Dunn, Nestore Galati, Matt Peyton, Bob St. John, Abel Valdez – Structural

Project: Alexander Court, Washington, DC

Architect: FOX Architects

Engineer: Rathgeber/Goss Associates

General Contractor: DAVIS Construction

Mackie Jenkins, Carlos Mercado, JP Monroy, Rigoberto Ruiz, Alfredo Ventura, Jose Villalobos – Baker DC

Project: West Half Residential, Washington, DC

Architect: Eric Colbert & Associates PC

Engineer: SK&A Structural Engineers

General Contractor: HITT Contracting



Kennedy Center Expansion, Washington, DC –The Lane Construction Corporation

PRECAST CONCRETE

David (Doc) Burkhardt, Danny Cabrera, Jaime Paz, Ariel Perez – EDI/DLM Contractors, LLC

Project: The Boro Blocks A&B, McLean, VA

Architect: Shalom Baranes Associates

Structural Engineer: Tadjer Cohen Edelson Associates

General Contractor: Clark Construction Group, LLC

Mario Forlenza, Eric Young – Modern Mosaic Ltd.

Project: 700 Pennsylvania Avenue, Washington, DC

Architect: Gensler

General Contractor: Clark Construction Group, LLC

SPECIAL CONCRETE FINISHES

Russell Reeder, John Rosewag, Roberto Velasquez, Jose Urquilla, Willie Urquilla, Jose Zelaya – Clark Concrete Contractors, LLC

Project: Glenstone II Museum, Potomac, MD

Architect: Thomas Phifer and Partners

Engineer: SOM

General Contractor: HITT Contracting

2019 Craftsmanship Awards



DOORS & WINDOWS

EXTERIOR GLASS

★ **Aaron Boots, Darryl Cross, Jody Davis, Travis Ellenberger, Thomas Miller, Valiq Rogers** – Harmon, Inc.

Project: Alexander Court, Washington, DC
Architect: FOX Architects
General Contractor: DAVIS Construction

Jose Cabrera, Roger Compton, Chuck Mills, George Seward, Brian Webber – Custom Glass Services, Inc.

Project: International Spy Museum, Washington, DC
Architect: Hickok Cole
Engineer: SK&A Structural Engineers
General Contractor: Clark Construction Group, LLC

Nathaniel Caldwell, Sherman Conner, Doug Fink, Kevin Horan, Gerardo Ruiz, Paul Welch – TSI Corporations

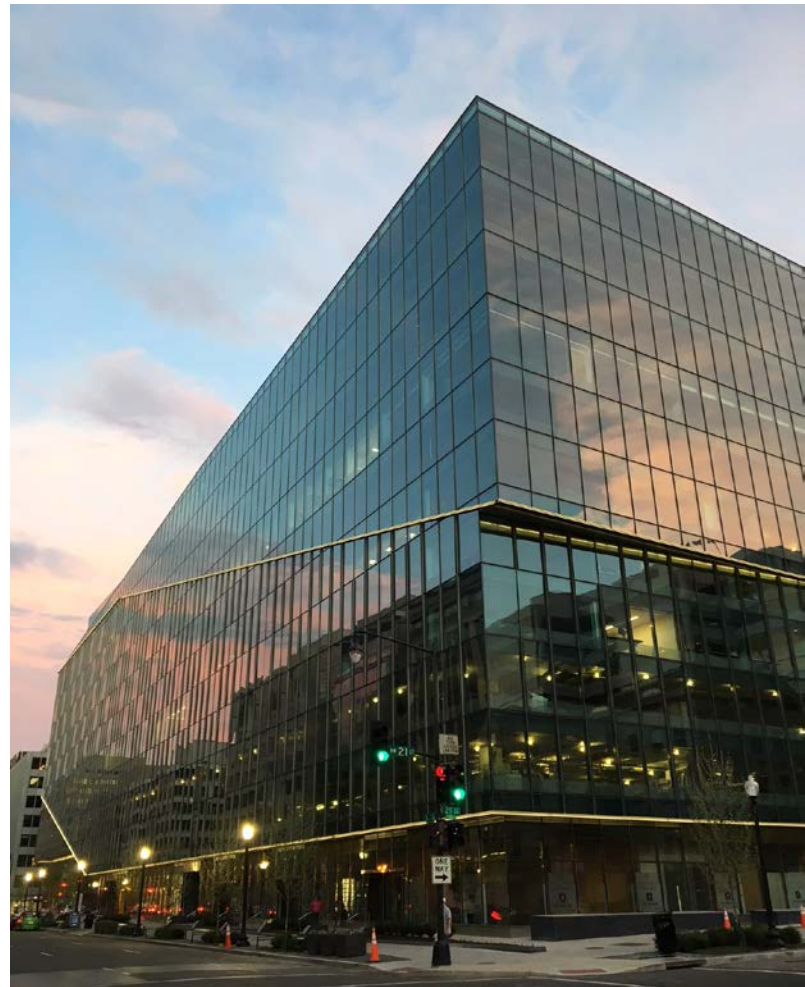
Project: Brendan Iribe Center for Computer Science & Engineering, College Park, MD
Architect: HDR, Inc.
General Contractor: The Whiting-Turner Contracting Company

★ **Chris Bast, Andrew Boncal, Louie Ceraldi, Silvio Orozco, Steven Raye, Robert Willis** – Enclos Corp.

Project: Capital One Block B, McLean, VA
Architect: HKS, PC
Engineer: Curtainwall Design Consultants
General Contractor: DAVIS Construction

★ **Erik Barriga, Rafael Cordero, Alejandro Loyola, Rob Marsh, Ernie Ney, Matt Willison** – Service Glass Industries, Inc.

Project: Reston Excelsior Parc, Reston, VA
Architect: R2L:Architects
General Contractor: John Moriarty & Associates of VA, LLC



Alexander Court, Washington, DC – Novum Structures LLC

Anthony Berkemeier, Evan George, Viktor Voznyuk – Novum Structures LLC

Project: Alexander Court, Washington, DC
Architect: FOX Architects
General Contractor: DAVIS Construction

2019 Craftsmanship Awards



ELECTRICAL

LIGHTING SYSTEMS

Michael Callaway, Bryan Fraley, Roberto Merlos, James O'Donnell, Alejandro Perez, Timothy Stull – J.E. Richards Electric, Inc.

Project: CARR Properties Midtown, Washington, DC
Architect: Michael Graves Architecture & Design
Engineer: Vanderweil
General Contractor: Clark Construction Group, LLC

John Canterbury, Candido Gutierrez, Eric Kusi, Rob Martin, Jeff Viering, John Witsman – VarcoMac Electrical Construction Co.

Project: Confidential Client - Phase 3, Washington, DC
Architect: OPX Architecture/Interiors
Engineer: GHT Ltd.
General Contractor: HITT Contracting

Kenny Fowler, Jonys Lobo, Oscar Lobo, Ryan Potts, Juan Quintanilla, Millard Voigt – Mona Electric Group

Project: Capital One Block B, McLean, VA
Architect: HKS, PC
Engineer: WSP Group
General Contractor: DAVIS Construction

Aaron Cohen, Dave Levean, Eddie Nunez, Jody Ruffner, Chris Scott, Doug Thomas – Power Solutions, LLC

Project: Academies of Loudoun, Leesburg, VA
Architect/Engineer: Stantec
General Contractor: Holder Construction Company

Taurus Carroll, James Johnson, Patrick Landers, Ryan Simpson, Brian Smith, Jr., Michael Weinfeld – J.E. Richards Electric, Inc.

Project: Wizards Practice Facility, Washington, DC
Architect: Rossetti
Engineer: Setty
General Contractor: Smoot Gilbane a Joint Venture

Matt Grady, Chuck Rhoads, Thomas St. John – Mona Electric Group

Project: National Law Enforcement Museum, Washington, DC
Architect: Davis Buckley Architects and Planners
Engineer: Loring Consulting Engineers
General Contractor: Clark Construction Group, LLC

(Left) CARR Properties Midtown, Washington, DC – J.E. Richards Electric, Inc.

(Right) WMATA Andrews Federal Center Bus Garage, Suitland, MD – Mona Electric Group



2019 Craftsmanship Awards

POWER GENERATION, DISTRIBUTION AND SWITCHGEAR

Timmy Burke, Clint Cantrell, Mounir Dourrachad, Rick Lee, Billy Miskovic, Russell Sullivan – *Mona Electric Group*

Project: WMATA Andrews Federal Center Bus Garage, Suitland, MD

Architect/Engineer: Systra Consulting

General Contractor: Hensel Phelps

Charles Barber, Jr., Victor Flores, Kevin Ford, Shawn Neylon, Daniel Paredes, Rafael Sanchez – *J.E. Richards Electric, Inc.*

Project: MedImmune Electrical Consolidation, Gaithersburg, MD

Architect/Engineer: SmithGroupJJR

General Contractor: Buch Construction

Wayne Kirkpatrick, Richard LaDow, Phillip McDonald, Kevin Patterson, Scott Smith, Ben Staniewicz – *C3M Power Systems, LLC*

Project: Rehabilitation of Orange Blue Line Metrorail System Stadium Armory, Washington, DC

Engineer: Electrical Systems, Inc.

General Contractor: Clark Construction Group, LLC

Butch Hawkins, Mike Hefflin, Dave Maus, Brandon McLellan, Tim Quillen, Bill Raff – *VarcoMac Electrical Construction Co.*

Project: Confidential Client – Data Hall Suite, Ashburn, VA

Architect: Herring & Trowbridge Architects

Engineer: H.F. Lenz Company

General Contractor: HITT Contracting

Dwight Bennett, Matthew Christian, Richard King, Brett Sofley, Andrew Talcott, Barry Williams – *Dynalectric Company*

Project: Sabey Data Center, Ashburn, VA

Architect: Salas O'Brien

Engineer: Southland Engineering

General Contractor: Sabey Construction

Brian Benson, Jason Ketchel, Kenny Kronk, Nicholas Moses, James O'Donnell, Eric Richards – *J.E. Richards Electric, Inc.*

Project: CARR Properties Midtown, Washington, DC

Architect: Michael Graves Architecture & Design

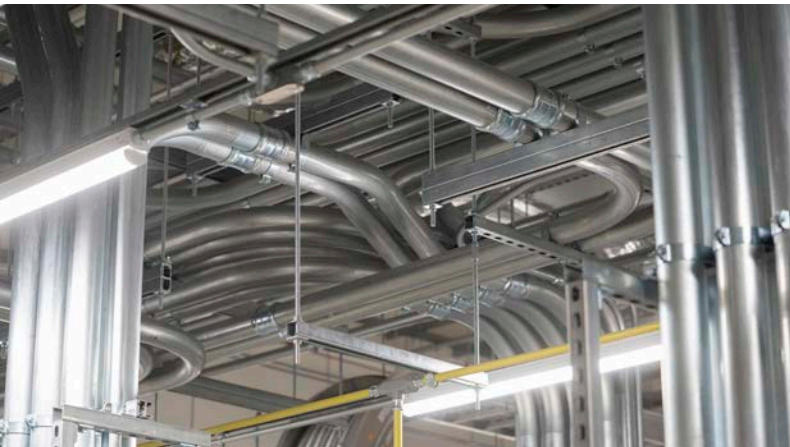
Engineer: Vanderweil

General Contractor: Clark Construction Group, LLC

Rob Adair, Tim Edney, Allan Harrison – *VarcoMac Electrical Construction Co.*

Project: Alexandria House Switchgear Replacement, Alexandria, VA

Engineer: RMF Engineering



(Left) QTS - Project Acadia PH1, Manassas, VA – Power Solutions, LLC
(Below) QTS Project Joshua, Sterling, VA – Dynalectric Company



2019 Craftsmanship Awards

Matt Ferguson, Donald Fitzhugh, Patrick V. Latham III, Justin Lee, Steven Preston, Dylan Rupard –
Mona Electric Group

Project: Cannon House Office Building Renewal,
Phase 1, Washington, DC
Architect: Shalom Baranes Associates
Engineer: James Posey & Associates
General Contractor: Clark/Christman, a Joint Venture

William Brown, Sam Bumgardner, Jr., Tom Crown, Brad Duker, Nick Thompson, Edward V. Turner –
Dynalectric Company

Project: QTS Project Joshua, Sterling, VA
Architect: Corgan
Engineer: H.F. Lenz Company
General Contractor: Turner Construction Company

Reid Bowen, Isiah Brown, William Bruce, Patrick Gardiner, Jose Orellana, Daniel Stamp –
Mona Electric Group

Project: Capital One Block B, McLean, VA
Architect: HKS, PC
Engineer: WSP Group
General Contractor: DAVIS Construction

Sean Barrett, James Bradfield, Channing Crawford, Robert Denekas, Charles “Chappy” Knaack, Juan Ventura – Power Solutions, LLC

Project: QTS - Project Acadia PH1, Manassas, VA
Architect: Corgan
Engineer: KW Mission Critical Engineering
General Contractor: DPR Construction

SPECIAL SYSTEMS

Mustapha Boujadi, Jamal Boussakri, Kenneth Higgins, Timothy Jacobs, Davis Poblador, Edwin Reyes-Saravia –
J.E. Richards Electric, Inc.

Project: CARR Properties Midtown, Washington, DC
Architect: Michael Graves Architecture & Design
Engineer: Vanderweil

Michael Garvey, Chol Song, Mike Vanduzer –
Mona Electric Group

Project: WMATA Andrews Federal Center Bus Garage,
Suitland, MD
Architect/Engineer: Systra Consulting
General Contractor: Hensel Phelps



The Unisphere - Phase 3 - NetZero Headquarters, Silver Spring, MD – Boatman and Magnani, Inc.

William Artis, Jeff Baggarly, Marvin Barnett, Tanya Filkins, Doug Leggat, Dustin O’Hara –
Dynalectric Company

Project: Non-Disclosed Client, Ashburn, VA
Architect: DVA Architects
Engineer: CCG Facilities Integration
General Contractor: Holder Construction Company



FINISHES

CERAMIC TILE AND TERRAZZO

Guillermo Briones, Bruce Schmidt – Lach Tile

Project: Eaton Hotel, Washington, DC
Architect: CallisonRTKL
General Contractor: HITT Contracting

Carlos A. Amaya, Edgar A. Carreto-Ramos, Robert D. Redden, Pablo Torres, Jose G. Varela, Marcos Villafuerte – Boatman and Magnani, Inc.

Project: American Geophysical Union Renovation,
Washington, DC
Architect: Hickok Cole
Engineer: Interface Engineering
General Contractor: Skanska USA Building, Inc.

2019 Craftsmanship Awards



(Left) Capital One Block B, McLean, VA – Tri-State Drywall, Inc. (Right) 2501 M Street, Washington, DC – Capitol Drywall, Inc.

★ **Johnny Antezana, Reidy Vasquez Arias, Ariel Cespedes, Candelero Rivera Hernandez, Fidel Sandoval Mendoza, Juan J. Rodriguez** – Boatman and Magnani, Inc.

Project: The Unisphere - Phase 3 - NetZero Headquarters, Silver Spring, MD

Architect: EwingCole

General Contractor: The Whiting-Turner Contracting Company

Fabio Amaya, Koffitsey Atandji, Bruce Clauser, Jose Flores, Jose Rey-Rivas, Rafael Rosales – Roman Mosaic & Tile Company

Project: Parcel One Office Building at District Wharf, Washington, DC

Architect: Kohn Pederson Fox Associates, PC

General Contractor: Balfour Beatty

Carlos A. Amaya, Eric R. Blanco, Edgar A. Carreto-Ramos, Emerson Lopez-Perez, Carlos H. Blanco Romero, Ronald Wondoloski – Boatman and Magnani, Inc.

Project: National Law Enforcement Museum, Washington, DC

Architect: Davis Buckley Architects and Planners

General Contractor: Clark Construction Group, LLC

Lisandro Guevara Acosta, Fabio Amaya, AJ Applegarth, Nestor Campos, Saul Lopez – Roman Mosaic & Tile Company

Project: Inova Schar Cancer Institute, Falls Church, VA

General Contractor: Clark Construction Group, LLC

DRYWALL

Joseph Carlisle, Richard Crisler, Juan A. Curiel, Sergio Santiesteban, Ted Woodward, Jose A. Zalles – C.J. Coakley Co., Inc.

Project: Capital One Block B, McLean, VA

Architect: CallisonRTKL

General Contractor: DAVIS Construction

★ **Roberto Castro, Gino Contreras, Jordan Eustaquio, Juan Flores, Roberto Jaramillo, David Orazco** – Anning Johnson

Project: Nestlé Headquarters, Arlington, VA

Architect: Gensler

Engineer: GHT Ltd.

General Contractor: DAVIS Construction

Anthony Cassette, Roberto Garcia, Thomas Hurlock, Roger Marsden, Orlando Rivera, Juan Veizaga – C.J. Coakley Co., Inc.

Project: Historic Center Building, Phase 2 Consolidation of the U.S. Department of Homeland Security, Washington, DC

Architect: Shalom Baranes Associates

General Contractor: Grunley Construction Company, Inc.

Bill Fortner, Luther Laing, Cam Sokoloff – Capitol Drywall, Inc.

Project: 2501 M Street, Washington, DC

Architect: CORE Architects

General Contractor: DAVIS Construction

2019 Craftsmanship Awards



Brendan Iribe Center for Computer Science & Engineering, College Park, MD – Genco Masonry, Inc.

Pablo Acebo, Sergio Mendez – Dynamic Contracting

Project: National Law Enforcement Museum, Washington, DC

Architect: Davis Buckley Architects and Planners

General Contractor: Clark Construction Group, LLC

Jesus Avelar, Marcelino Avelar, Marvin Herrera, Jhonny Mendez, Walter Moreno, Dave Parkhurst – Tri-State Drywall, Inc.

Project: Capital One Block B, McLean, VA

Architect: CallisonRTKL

General Contractor: DAVIS Construction



MASONRY

INTERIOR STONE AND MARBLE

Miguel A. Diaz Fuentes, Mayber Hernandez Larios, Daniel E. Mazariego, Wilfredo Orellana, Michael A. Wondoloski – R. Bratti Associates

Project: 1100 15th Street, Washington, DC

Architect: SHoP Architects

General Contractor: Clark Construction Group, LLC

★ **Gilmer A. Guevara Aleman, William E. Orellana, Jose Alfredo Ornelas, Thomas F.J. Palovich** – R. Bratti Associates

Project: Capital One Block B, McLean, VA

Architect: HKS, PC

General Contractor: DAVIS Construction

UNIT MASONRY

Juan Conteras, Lance McCauley, Celso Nunez, Chris Payne, Stephen Sweeney – Diverse Masonry Corporation

Project: 700 Pennsylvania Avenue, Washington, DC

Architect: Gensler

General Contractor: Clark Construction Group, LLC

John Allers, Santos R. Benitez, Jim Connor, Robert Emerson, Jose Fernandez – Genco Masonry, Inc.

Project: Brendan Iribe Center for Computer Science & Engineering, College Park, MD

Architect: HDR, Inc.

General Contractor: The Whiting-Turner Contracting Company

Blake Pappas, Michael Pappas, Jorge Pena, Fredy Quinones, Jose Valladares, Tranquilino Villegas – Telligent Masonry, LLC

Project: Signet Condominiums, McLean, VA

Architect: Page Southerland Page, Inc.

General Contractor: DAVIS Construction

★ **Juan Hernandez, Douglas Joya, Ricardo Moscoso, Blake Pappas, Michael Pappas, Tranquilino Villegas** – Telligent Masonry, LLC

Project: The Signature at Reston Town Center, Reston, VA

Architect: Shalom Baranes Associates

Engineer: Thornton Tomasetti

General Contractor: HITT Contracting

2019 Craftsmanship Awards



MECHANICAL

HVAC-PIPING

Michael Bennett, Chris Cook, James Crawford, Gino Depaz, Nerry Garcia, Jesse Vandevort – Shapiro & Duncan, Inc.

Project: GWU - Corcoran School of the Arts and Design, Washington, DC

Architect: Leo A Daly

Engineer: Mueller Associates

General Contractor: The Whiting-Turner Contracting Company

Mark Bowen, Joe Gale, Jeff Latimer, Mike Mercure – Kent Island Mechanical

Project: Control Wing Basement & Chiller/Cooling Tower Modernization, Leesburg, VA

General Contractor: Grunley Construction Company, Inc.



METALS

METAL PANELS

Elin Hernandez, Darry Miller, Clemente Sabillon, Jose Sabillon, Tyler Vogel, Dave Watson – Tecta America Architectural Metals

Project: International Spy Museum, Washington, DC

Architect: Hickok Cole

General Contractor: Clark Construction Group, LLC

Henry Diaz, Charlie Mora, Mike Ogden – Metro Panels and Glass

Project: St. Matthew's Redevelopment, Washington, DC

Architect: Shalom Baranes Associates

General Contractor: Clark Construction Group, LLC



Prince George's Community College - Lanham Hall Renovation/Addition, Largo, MD – IronShore Contracting, LLC

Ruben Altamirano, Wilber Cheguen, Rudy Espino, Elmer Menendez, Daniel Moreno, Candelario Antonio Rodriguez – IronShore Contracting, LLC

Project: Prince George's Community College - Lanham Hall Renovation/Addition, Largo, MD

Architect: Murphy & Dittenhafer Architects

General Contractor: Forrester Construction Company

MISCELLANEOUS METAL FABRICATION

J. Benjamin Arellano, Antonio Avalos, Jamie Barton, Kapildeo Daitnarayan, Francisco Garcia, Jose Martinez – Extreme Steel, Inc.

Project: International Spy Museum, Washington, DC

Architect: Hickok Cole

Engineer: SK&A Structural Engineers

General Contractor: Clark Construction Group, LLC

ORNAMENTAL METAL

Joe Bailey, Michelle Bishop, Jose Escalante, Baudillio Garcia, Jayson Mapes, Phillip Stratton – Tate Ornamental, Inc.

Project: 1100 15th Street, Washington, DC

Architect: SHoP Architects

General Contractor: Clark Construction Group, LLC

2019 Craftsmanship Awards

Chris Bondura, Anthony Manago, Jesse Marks, Mike Marks, Stanley Murray, Stephen Pelo –
Crescent Designed Metals

Project: Capital One Block B, McLean, VA
Architect: CallisonRTKL
General Contractor: DAVIS Construction

STRUCTURAL STEEL FRAMING

Bob Campbell, Mike Palmer, Kevin Rogers –
Banker Steel Company
Sherman Hill, Cameron Maddox, John Manfredi –
Williams Steel Erection Co.

Project: Dulles Corridor Metrorail Project Phase 2,
Sterling, VA
Architect/Engineer: Dewberry
General Contractor: Capital Rail Constructors (Clark &
Kiewit Joint Venture)

Mark Henderson, Cody Mann, Mike Palmer –
Banker Steel Company

Project: Arlington Public Schools New School at the
Wilson Site, Arlington, VA
Architect: BIG – Bjarke Ingels Group
Engineer: Silman
General Contractor: Gilbane Building Company



SITWORK

LANDSCAPING

Gerardo Arias, Charles Owen, Donald Smith, Oomer Syed – *Fine Landscapes, Ltd.*

Project: Capital One Block B, McLean, VA
Architect: HKS, PC
Civil Engineer/Landscape Architect: Gordon
General Contractor: DAVIS Construction

Jose Alvarez, Yovani Barrera, Burt Elder, Esteban Ornelas, Nelson Portillo, Victor Velasco –
Chapel Valley Landscaping

Project: 700 Pennsylvania Avenue, Washington, DC
Architect: Gensler
Landscape Architect: Oehme, Van Sweden
General Contractor: Clark Construction Group, LLC



Cannon House Office Building - Phase 1 Renewal, Washington, DC – BrandSafway Services, LLC

UNDERPINNING, FOUNDATIONS AND EXCAVATIONS

Paul Moroney – *Superior Foundation, Inc.*

Project: Alexander Court, Washington, DC
Architect: FOX Architects
Engineer: Rathgeber/Goss Associates
General Contractor: DAVIS Construction

Ramon Arevalo, Olsi Bokciu, Christopher Devine, Jose Fuentes, Bledar Hoti, Henry Robles –
Steele Foundation LLC

Project: 11th and K Street Hotel, Washington, DC
Architect: Peter Fillat Architects
Engineer: Tadjer Cohen Edelson & Associates
General Contractor: CBG Building Company

★ **Charles Lackie, Gabe McClain, Larry Pitzer, Rick Robinson, David Stine** – *Guy F. Atkinson Construction*

Project: MD355 Crossing (BRAC), Bethesda, MD
Engineer: MRCE
General Contractor: Clark Construction Group, LLC

Hugh Campbell, Andres Cortez, Casey James, Kevin Randall, Dennis Sheehan – *Clark Foundations, LLC*

Project: Suburban Hospital Campus Enhancements
Project Phase 2, Bethesda, MD
General Contractor: Clark Construction Group, LLC

2019 Craftsmanship Awards



The Terrace Theater, Washington, DC – Acoustic Systems: Staging Concepts and Architectural Millwork: Mahogany, Inc.

Nate Barksdale, Mike Conner, Issac Dance, Mauricio Rodriguez, Terrence Sumuel, Mike Waller – Clark Foundations, LLC

Project: The Wilson and The Elm at 7272 Wisconsin Avenue, Bethesda, MD

Architect: Shalom Baranes Associates

Engineer: Tadjer Cohen Edelson & Associates

General Contractor: Clark Construction Group, LLC

Nate Barksdale, Chris Moen, Travon Perkins, Kevin Randall, Peter Shirley, Encarnacion Velasquez – Clark Foundations, LLC

Project: 750 North Glebe, Arlington, MD

Architect: WDG Architecture, PLLC

General Contractor: Clark Construction Group, LLC

UTILITIES

Danilo Diaz, Octavio Hernandez, Transito Nolasco, Victor Rodrigues, Jose Saravia, Martin Villatoro – Anchor Construction Corporation

Project: UPI-Crescent Trail, Washington, DC

General Contractor: Anchor Construction Corporation



SPECIAL CONSTRUCTION

ACOUSTIC SYSTEMS

Jason Beckman, Bryan Bruce, Dan McDonald, Heath Postma, Jeff Swenson, Mart Swindeman – Staging Concepts

Project: The Terrace Theater, Washington, DC

Architect: Quinn Evans Architects

General Contractor: rand* construction corporation

ATHLETIC FIELDS & PARKS

Anita Butani, Donald Bullock, James Christian, Warren Gover, Olivia Herrera, Justin Miller – HRGM Corporation

Project: Garrison Elementary School Field and Playgrounds, Washington, DC

Architect: Bell Architects/Newman JV

Engineer: Wiles Mensch - DC

General Contractor: GCS|SIGAL

2019 Craftsmanship Awards

GEOHERMAL WELLS

Justin Dickinson, Chris Hiser, Dave Lawton, Adam Santry, Brett Sweeney – *Allied Well Drilling*

Project: Wheaton Public Improvements, Wheaton, MD

Architect: Gensler

Engineer: Geo-Xergy

General Contractor: Clark Construction Group, LLC

RAINSCREEN

Terry Downs, Brian Griffin, Diego Guzman, Samuel Vidrio, Benjamin Weiss, Steve Weiss – *PCC Construction Components*

Project: Wharf Pier 4, Washington, DC

Architect: McGraw Bagnoli Architects PLLC

General Contractor: The Whiting-Turner Contracting Company

SCAFFOLDING AND RIGGING

Joseph Curry, Christopher Greeley, Levy Rivera, Adiel Segovia – *BrandSafway Services, LLC*

Project: Cannon House Office Building - Phase 1 Renewal, Washington, DC

Architect: Shalom Baranes Associates

Engineer: Thornton Tomasetti

General Contractor: Clark/Christman, A Joint Venture

THERMAL AND MOISTURE PROTECTION

Jose Canales, Javier Pacheco, Javier Ramirez, Paul Simon, Jeff Swayne – *DJB Contracting Inc.*

Project: Phillips Collection Renovation, Washington, DC

Architect: Bowie Gridley Architects

Engineer: Simpson Gumpertz & Heger

General Contractor: Consigli Construction Co., Inc.



WOODS & PLASTICS

ARCHITECTURAL MILLWORK

Mike Greeson, Mike Grimes, Billy Harp, Eduardo Peraza, Ever Quijada, Justin Wilson – *ISEC, Inc.*

Project: Columbia Place Hotel, Washington, DC

Architect: Forrest Perkins

General Contractor: Hensel Phelps

Travis Gee, Edward Gregory, Eugene Gregory, Josue Sousa, Daniel Tarqui – *Mahogany, Inc.*

Project: The Terrace Theater, Washington, DC

Architect: Quinn Evans Architects

General Contractor: rand* construction corporation

Michael Do, Eduardo Howell, Carlos Jordan, Robert Lucas, Andre' Scott, Samuel Taliaferro – *Baker & Kerr*

Project: Nestlé Headquarters, Arlington, VA

Architect: Gensler

Engineer: GHT Ltd.

General Contractor: DAVIS Construction

Si Nguyen, Tai Pham, Tony Quaranto, Therin Riddle, Samantha Turley, Randy Tusing – *Jefferson Millwork & Design, Inc.*

Project: Capital One Block B, McLean, VA

Architect: CallisonRTKL

General Contractor: DAVIS Construction

Tony Maldonado, Gerry Schumacher – *Washington Woodworking*

Project: 2345 Crystal Drive Lobby Renovation, Arlington, VA

Architect: HKS, PC

Engineer: SK&A Structural Engineers, PLLC

General Contractor: Harvey-Cleary Builders

2019 Craftsmanship Awards

A SPECIAL THANK YOU TO OUR SPONSORS

CENTERPIECE SPONSOR

Scaffold Resource, LLC

DESSERT SPONSOR

Dynalectric Company

WINE SPONSOR

Telligent Masonry, LLC

CRAFTSMEN GIFT SPONSORS

Clark Construction Group, LLC
 IBEW Local Union 26
 Power Solutions, LLC
 The Whiting-Turner Contracting Company

PLATINUM SPONSORS

Anchor Construction Corporation
 Boatman and Magnani Inc.
 BrandSafway Services, LLC
 Bricklayers and Allied Craftworkers
 Local 1 MD/VA/DC
 Crescent Designed Metals
 Dynamic Contracting
 Enclos Corp.
 GCS/Sigal
 Genco Masonry, Inc.
 Holder Construction Company
 HRGM Corporation
 JE Richards, Inc.
 John Moriarty and Associates
 Mona Electric Group
 PCC Construction Components
 Smoot Construction Company of Washington
 Steele Foundation, LLC
 VarcoMac Electrical Construction Co.

RECEPTION SPONSORS

Fine Landscapes, Ltd.
 Mahogany Inc.

GOLD SPONSORS

DAVIS Construction
 Fox Rothschild LLP
 Grunley Construction Company

SILVER SPONSORS

Forrester Construction Company
 HITT Contracting
 Kohn Pedersen Fox Associates

BRONZE SPONSORS

Structural
 TSI Corporations
 Varela, Lee, Metz & Guarino, LLP

2019 WBC CRAFTSMAN HALL OF FAME INDUCTEES

In Recognition of Extraordinary Dedication, Exception Skill, Quality Craftsmanship and Enduring Commitment.
 Congratulations to the 2019 Class of Craftsman Hall of Fame.



JOHN BRYANT
WOODS & PLASTICS



BILL RHODES
ELECTRICAL



MIKE WONDOLOSKI
MASONRY

MEMBERS OF THE CRAFTSMAN HALL OF FAME

JOSE R. ABEIJON / BRUCE BALDWIN / FRANCISCO BARBOSA / WILLIAM BEATON / ROBERT B. BODMER
 BERI BONACIC / RONALD BORZA, JR. / MARK D. BOUGHER / ROBERT E. BUNTING, III / VICTOR CASTRO
 ANTHONY DAVIS / WILLIAM E. EATON / ROBERT GOTTLIED / HERMANN J. HAMBACH / RICHARD JOHNSON
 FRANCISCO LORENZO / FRANCIS L. MARTIN / ALBERT "BUDDY" MCDOWELL, JR. / WILLIAM NOEL
 FRANK ORREN / OVILA PAQUET / SCOTT PASHKEVICH / RALPH EUGENE PEARSON / JAMES QUINE
 WAYNE RADKE / EDELINE BUSH RHODES, III / JOE SIEIRO / KENNETH SPOHN / RICHARD F. STEVENS, JR.
 REGIS J. STUDENY, JR. / WILLIAM SUHRHOFF / DAVID THOMAS / ANNA TORRE-SMITH / MARK VALENTINE
 JOHN VENDEMIA / RONALD WONDOLOSKI / GERALD WHOOLERY / FRED WISNER

2019 Craftsmanship Awards

2019 CRAFTSMANSHIP AWARDS JUDGES

Keith Adams	Ben Easlick	Bernie Marable	Mike Scheuble
AJ Al-Jariri	Peter Ege	Mike Marcellino	Don Schlusemeyer
Eric Anderson	Jason Ellis	Dana Marinzel	Cameron Sheppard
Ashley Arbolino	Paul Falkenburg	Jerry Marinzel	Denny Showalter
Geoff Azaroff	Justin Fanning	Kyle Maylath	Alesya Sidorkina
Roman Azizian	Kent Fee	Kelly McGuire	Eunices Simon
Kerric Baird	Paul Ferenc	Liz Mendonca	Dave Singleton
Iz Baires	Kami Fitzpatrick	Andrew Meyers	Nick Sita
Joe Barbasky	Jon Fox	Brad Miller	Bill Sloat
Andrew Barnor	Teresa Frederick	Tyler Moyer	Chris Smith
Samarth Barot	Jeff Frengel	Murph Murphy	Jim Smith
Gerard Barrenechea	Michael Fusco	Paul Nassetta	Maria Snyder
Jeremy Basista	Greg Gadell	Amy Navabi	Heidi Staab
Ari Belmonte	Dave Giannini	Susan Nawrocki	Todd Steffens
Daniel Blaise	Peter Ginzburg	Alex Obi-Ugbo	Kathy Stepowany
Keaton Brooks	Casey Goins	Jon Olson	Sam Stevenson
Tyler Brown	Joe Gonzalez	David Osei	Susan Stine
Todd Buffington	Chris Gregory	Josiah Ottley	Edward Stratton
Hallie Burdin	Kesha Gross	Scott Parr	Jim Sullivan
Dennis Casey	Sarah Hall	Jim Partridge	Jackie Sykes-Washington
Chris Cash	Matt Hartman	Shishir Patil	Brian Talty
Andy Castillo	Christine Heffernan	Tony Pereira	Emerson Teer
Jane Cherney	Kristen Herman	Gael Perichon	Gregory Terry
Chuck Claar	Dan Hinnant	Terry Perry	Chuck Tomasco
Larry Clark	Carl Hirrlinger	Paul Phillips	Elizabeth Tuico
Greg Cobaugh	George Hogan	Robert Phinney	Veronica Vela
Jeremy Coffey	Mike Holland	Justin Pigott	Roy Wallace
JoAnn Coleman	TJ Holloway	Brian Polakowski	Ryan Ward
Casey Collier	Tom Huggins	Jim Polk	Donnette Washington
Chris Collins	Raquel Jimenez	Bob Pruitt	Ferrell Watson
John Collins	Erik Kaniecki	Larisa Ramich	Ed Weaver
Steve Conroe	Jimmy Keesling	Jim Rathborne	Allison White
Karen Cotton	Michael Khamis	Tom Rathburn	KeyKey Williams
Will Cox	Michael Kinkopf	Ross Rebraca	Chris Winters
Joe Dabbs	Henry Ko	Matt Redabaugh	Eric Wolfrey
David Davis	Valde Kuzdzal	Dan Rizzo	Charley Wooldridge
Mat Daw	Adam Lackey	Nick Robey	Nick Yager
Mark Drury	Joe LaFonte	Steve Robey	Ning Yang
James Dudney	Greg LaRosa	Jerry Ross	Spencer Yearous
Brian Dugan	Brian Lockwood	Shana Rothman	Grace Zammiti
Bethany Dunn	William Magazine	Rich Ruckman	
Karl Dzioba	Lynn Maia	Tony Sadr	

2019 Craftsmanship Awards

●● See more photos on flickr: <https://www.flickr.com/photos/62695225@N02/sets/72157706344982811>



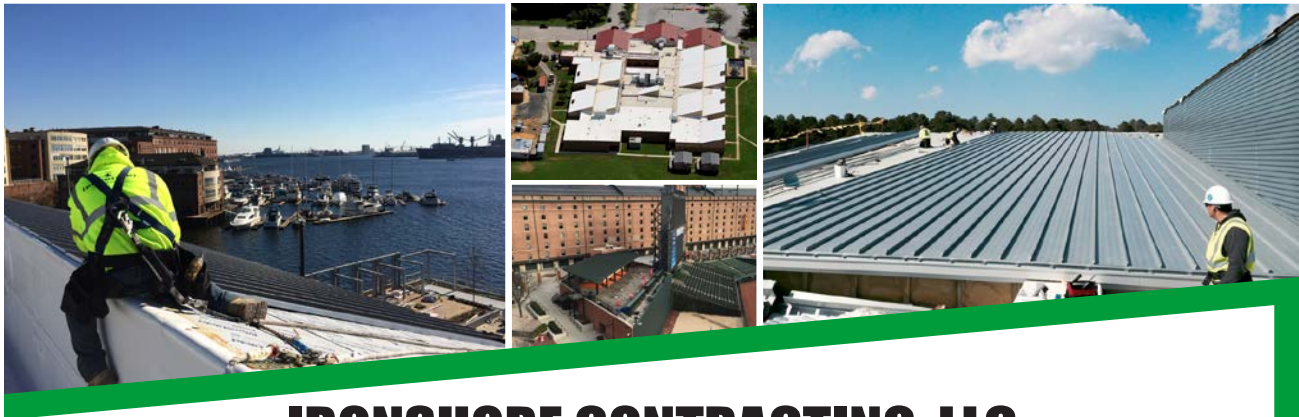


WCS
CONSTRUCTION

BUILDING PARTNERSHIPS *EXCEEDING EXPECTATIONS*



  www.wcsconstruction.com



IRONSHORE CONTRACTING, LLC

443-552-5732 | www.ironshoregrp.com

Roofing | Sheet Metal | Metal Wall Panels

**24-Hour On-Call Emergency Service:
Tenant Fit-Outs, Inspection and Maintenance**

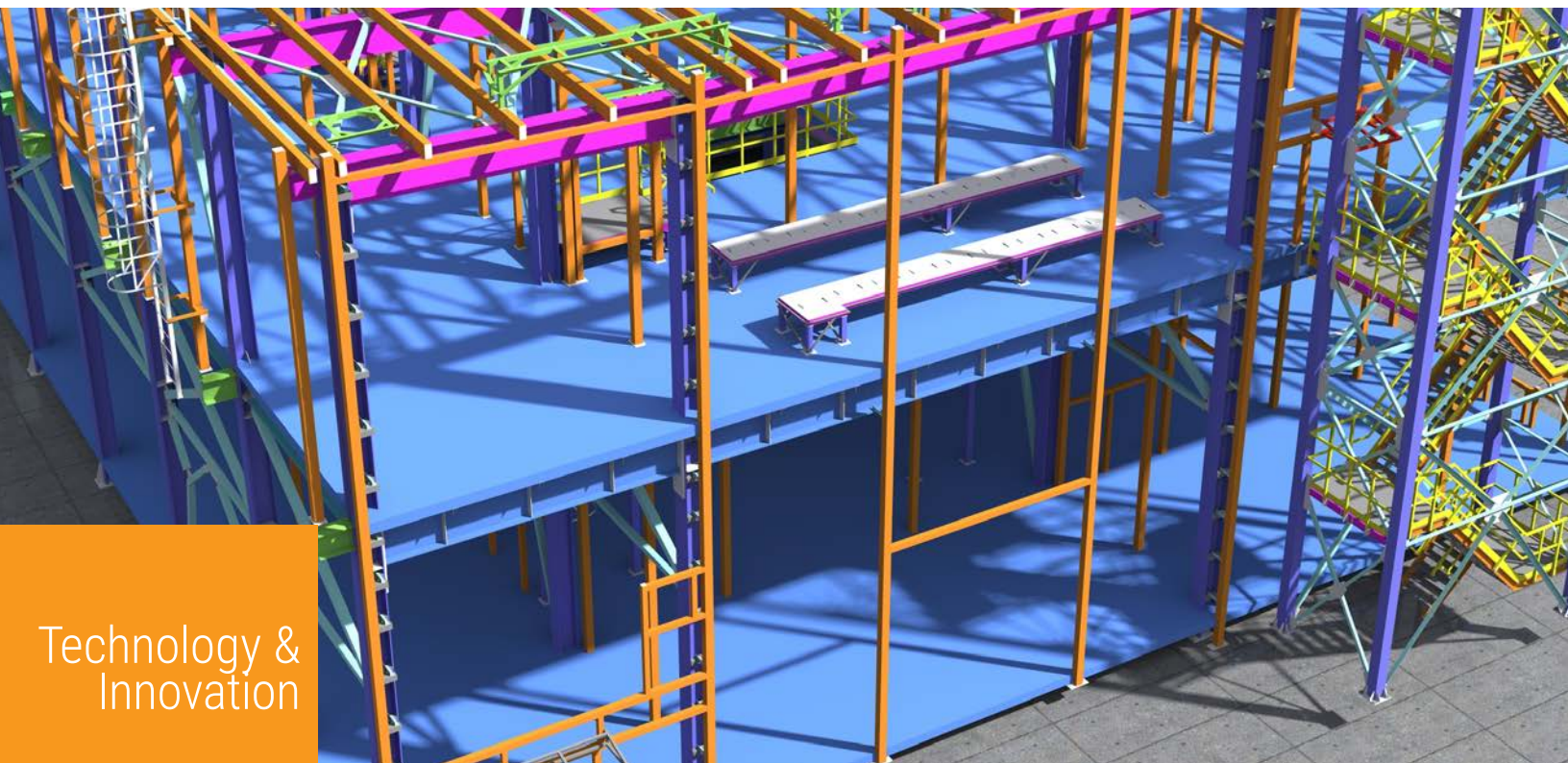
We have proudly worked with:

Morgan State University • Maryland Live! Casino • Oriole Park at Camden Yards
• MGM National Harbor • Horseshoe Casino Baltimore • Bank of America



IRONSHORE
CONTRACTING

1000 Haverhill Road, Baltimore, MD 21229



Technology &
Innovation

Practical Innovations Interview— **Technology in Architecture**

An Interview with Ms. Dana De Filippi
BIM Technologist, SmithGroupJJR, Washington DC

by **Melissa Nelson**
Senior Sales Engineer, Carrier

Q You are one of the leaders in Building Information Modeling Technology at SmithGroupJJR and have been working with adoption of digital practice for many years. In your experience, what are the biggest improvement in the architect workflow that you have seen as this transformation has occurred?

A The utilization of data. Rather than drawing lines architects and engineers can place elements which house assets and information rich data related to the element itself. This data can be used for scheduling, coordination, and annotative labels just to name a few.

Q Architects seem to be leading the way in advanced technology adoption? What are the benefits of early adoption in the field?

A I think different disciplines utilize technology in different ways, each has advanced in their own way. Staying ahead of the game is good for many reasons – creates healthy competition, can set you apart from your competitors, and ultimately can save you valuable time and money throughout the process. As technology is being adopted more and more new advancements are popping up every day.

Q Describe a bit about how each can be used in architecture and tell me if you are currently utilizing this technology at your firm. In particular, there is so much buzz around virtual reality. What is it and how are you using it?

A VR is a computer-generated simulation of a three-dimensional environment. This is probably the fastest growing form of technology being

utilized across the architecture and engineering industry. It allows the client, designers, end users, etc. to experience the space in a completely different way than ever before.

Many different viewing platforms of VR allow for a conference-style atmosphere where multiple can view the 3-D environment at once allowing for collaboration during the review process. VR is utilized throughout the entire project scope.

Early design – VR is used to conceptualize the design in 3D with client or owner. It may be even used to during an interview to market the job and win over the client with your design ideas.

Construction documentation – VR is a tool to add to the foundation to the early design collaboration between trades. The latest software has foundations in gaming engines which creates an immersive model that bring the design to life. With this realistic environment, the coordination errors become obvious in the virtual walkthrough. The virtual review can be done with VR googles or using a mouse, and either way, the benefit to coordination before construction is huge.

In-construction for coordination of the design – There is a utilization of Augmented Reality (AR) in this phase. For example, in order to ensure that the design is on par with what is being constructed, augmented reality is used on the construction site. When the design is particularly complex, the model can be overlaid in an augmented reality to ensure that the design and construction will

Q What other technology do you see architecture firms embracing?

A **Software Algorithms**
A process or set of rules to be followed in calculations or other problem-solving operations by a computer program. Using scripting tools, third party add-ons and other tools algorithms can be created, modified and run within typical design authoring software.

3D printing

The action or process of making a physical object from a three-dimensional digital model, typically by laying down many thin layers of a material in succession.

Rather than traditional model making, 3D printing has becoming extremely popular. Many printing companies offer 3D printing as a service, making it so that firms do not have to buy expensive printers and materials of their own.

Other BIM related advancements – coordination etc.

On the construction side we are also seeing the advancements of technology. 3D imaging through LiDAR technology allow for scanning before, during and after construction. Advanced computers and tablets on site which reduce the required amount of printing ensuring for constant coordination and new backgrounds.

Q Does your firm utilize all these technologies?

A Yes. We have a Visualization Team that manages the application of advanced technology, from rendering to virtual reality to augmented reality and beyond.

Q Is there a mutual interest in staying ahead of the technology curve across the consultants and customers that you work with (MEP, Structural, GC, owners)?

A Absolutely, as mentioned before, it is also a matter of staying competitive. More and more clients and owners are becoming aware of the advantages of utilizing new technology and the data that comes along with it. Not only can this be used during construction but also during operations and management of the building which is in total a much larger cost than building itself.

Q This is a large platform of communication for all the stakeholders in the Washington Building industry – what do you think is valuable to tell our audience?

A It used to be that architects and engineers did everything by hand, now you cannot get a job without knowing how to use a computer. The next phase will be the adoption and education of the basics of computer coding in order to automate many of the processes throughout design and construction documentation.

[Take advantage of the resources available.] The industry is very active online through forums and blogs. A basic Google search can sometimes make all the difference in accessing information in terms of what the industry is doing. **F**



Technology & Innovation

V

irtual Reality Within AEC

by **Jeff Scott**

Operational Controls Manager, BluEdge

Mention the term Virtual Reality (VR), and most consumers immediately conjure mental images of young gamers sitting in a chair, controller in hand, wearing a device on their head with the rest of the world shut out for hours or days. But as Artificial Intelligence (AI), Natural Language Programming (NLP) and Machine Learning algorithms advance to become more sophisticated with each passing year, many industries are discovering the high degree of value and process improvement that can be found by incorporating these technologies into B2B applications as well.

Already, aerospace and **automotive design** have found use in VR technology for speeding up the iterative process, reducing development costs and designing systems with a level of detail and user experience previously not possible. But VR is also finding a strong foothold in the world of architecture, engineering and construction as well.

What is VR and AR?

Virtual Reality (VR) is a computer-generated artificial environment where users experience a simulated

building or landscape. The user can affect what happens in the environment and, to a degree, act on those changes. For gamers, this may be a quest or a challenge. When brought into AEC applications, however, VR holds the potential to be a powerful evolution in building design and functionality.

Augmented Reality (AR) is a form of virtual reality where the user sees the actual landscape or building, but aided by goggles, glasses or helmets, may also see relevant data superimposed onto the landscape or structure itself. This offers a powerful leap from the old standard of looking from drawing to landscape or building to compare what is being planned or built and it turns the real-time view of the structure into the drawing itself where changes can be applied, and collaboration can be undertaken real-time.

Advantages in Utilizing VR Within AEC

As VR technology advances, companies within the AEC sphere are a perfect fit for its capabilities. One reason is that VR represents an intuitive evolution in technology already in use. From the advent of CAD in **the early 1960s** to CAVE technology¹ and onward to

¹CAVE technology: cave automatic virtual environment, an immersive virtual reality environment where projectors are directed to between three and six of the walls of a room-sized cube.

the sophisticated 3D modelling programs of the last decade, VR is a natural evolution in that progression, a reality that may make VR and AR adoption move even faster within AEC.

Both VR and AR are part of an emerging group of technologies called **Immersive Analytics**. Using AI to drive the VR experience, users within AEC fields can place themselves and their entire teams within a designed structure prior to its build. This allows collaboration, real-time changes and faster modifications during the iterative process and potentially less iterations overall before finalizing a design. There are many advantages to incorporating VR and AR into building design and into engineering and construction projects:

Improved Collaboration — By taking an entire team into the building in question via VR, the group can examine the structure in detail. This is ideal for large firms where key team members may be separated by long geographical distances. Their **ability to “see” a project** and join in a virtual “walk-through” saves time and money and improves design efficiency. It also allows for faster decision making for changes and in many cases the VR programs can be linked to change approval processes to streamline approvals.

Reduced Mistakes and Improved Quality — Because the VR experience is spatial for all team members, areas under discussion have less chance of being misinterpreted or misunderstood. Team members with specific skillsets may identify mistakes or areas of concern at a faster rate that before could have only been discovered with a live onsite visit – or worse, missed. The **sharing of ideas** improves both the speed and quality of the decision-making to improve quality overall.

The same value is realized using AR as well. By utilizing a real-world view of the site but with critical systems like plumbing, gas, HVAC, fire connections etc. visible during the walk-through, team members can visualize the systems integration within the building and identify areas of concern or those in need of change or modification.

Improved Safety — Site visits are common during any project. But providing safe access to those who need to visit ties up resources in time and money. With VR, the number of site visits can be reduced to only those critical to inspection, coding, and other “hands-on” requirements. VR is also being used in **safety training**

for equipment, a key consideration in an industry short on critical skillsets. This capability is particularly valuable to far flung or remote construction projects where transporting people for training is expensive and time consuming.

Improved Client Experience — Undertaking a major construction project on behalf of a client is a large undertaking. In the past, clients often had to rely on the same drawings as the contractors. And when additional information was needed, site visits were the only recourse. Now, with the advent of VR, clients can “see” the entire building in its final iteration as construction progresses. This helps answer client questions more fully and it helps to streamline any requested changes. It also gives the client a powerful **marketing tool** to use for winning tenants who can have the same experience in the space as the client/owner through the use of VR

Conclusion

While there is still a learning curve for AEC in general to undertake before VR and AR become as ubiquitous as CAD, hopefully the adoption of VR and AR can track at a faster pace. This may be possible given that the “look and feel” of the experience provided by CAD, CAVE and 3D modelling is one that is already familiar enough that the move to VR will be an intuitive one. Additionally, while an exciting and highly promising technology for AEC, there are still some areas that need to be improved before adoption will accelerate. One of these issues is user interface as companies seek to provide more realistic renderings rather than the avatar and cartoon backgrounds often accompanying VR experiences.

There are additional programming hurdles to overcome as well. Currently, there are no standards that enable easy integration into other software systems. As the potential for extensive use within AEC gains speed, development of additional software to allow support within other systems is already underway. As more and more systems program to integrate with the output of VR, AEC professionals can look for even more specialized functionality within VR headsets and new ground on which to improve their performance. **F**

About BluEdge

BluEdge provides 3D laser scanning, 3D printing, VR, Bluebeam training, plus construction fence mesh and building signage to the AEC community. BluEdge is a woman-owned business with commercial offices in seven major markets. Visit **www.bluedge.com** for more information.

The logo for LEO A DALY, featuring the company name in white, uppercase letters on a red rectangular background.

PLANNING
ARCHITECTURE
ENGINEERING
INTERIORS

leoadaly.com



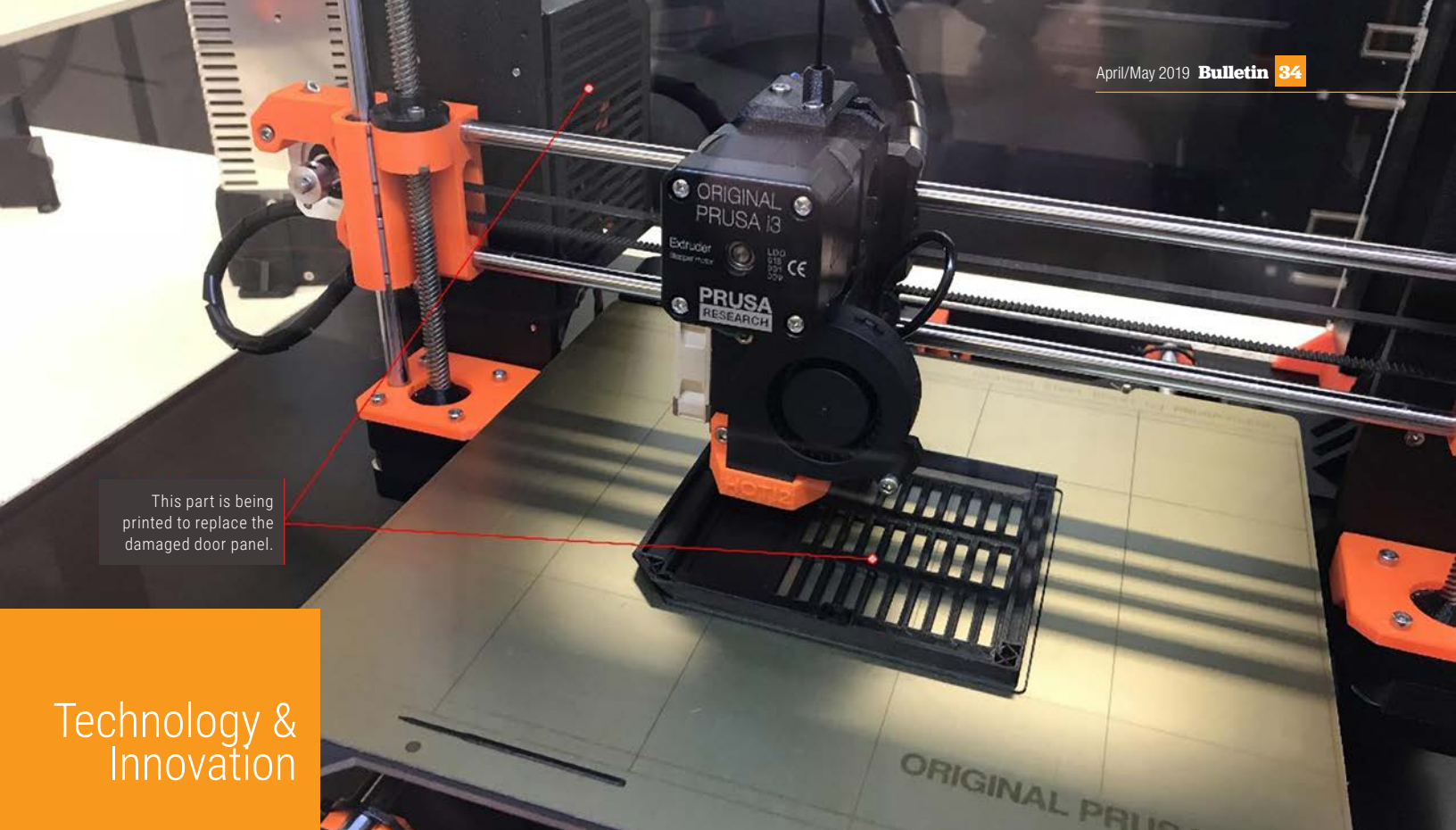
Craftsmanship

We are proud to have worked hand-in-hand with true craftsmans to restore and renovate the landmark Flagg Building into a 21st century teaching and museum space for fine arts and design programs at George Washington University's Corcoran School of the Arts & Design.

The logo for Mueller, featuring a stylized green 'M' with a red triangle pointing downwards, followed by the word 'Mueller' in a bold, red, sans-serif font. Below the name is the website address 'muellerassoc.com' in a smaller, black, sans-serif font.

Mueller
muellerassoc.com





This part is being printed to replace the damaged door panel.

Printer making a replacement part.

Technology &
Innovation



Trajectory for 3D Printing

by **David Stone**
Director, Virtual Construction
HITT Contracting Inc.

Otherwise known as “additive manufacturing,” 3D printing is a highly versatile method of production that has experienced rapid technological advances since its beginnings in the 1980s. Originally protected by patent laws, the method has attracted increased attention recently, allowing for more mainstream and accessible models to hit the consumer markets.

Using a raw material input that is typically in a filament spool, a robotic arm produces the finished product layer by layer based on a 3D computer model. This method presents endless possibilities, but it is worth noting creations don’t appear instantly as with the Star Trek Next Generation replicator. And, unlike a traditional 2D printer, there is much more setup time and sometimes troubleshooting to contend with—even with the best printers on the market.

The median price for a competent hobby printer ranges from \$500 to \$1,500. The next level of print-

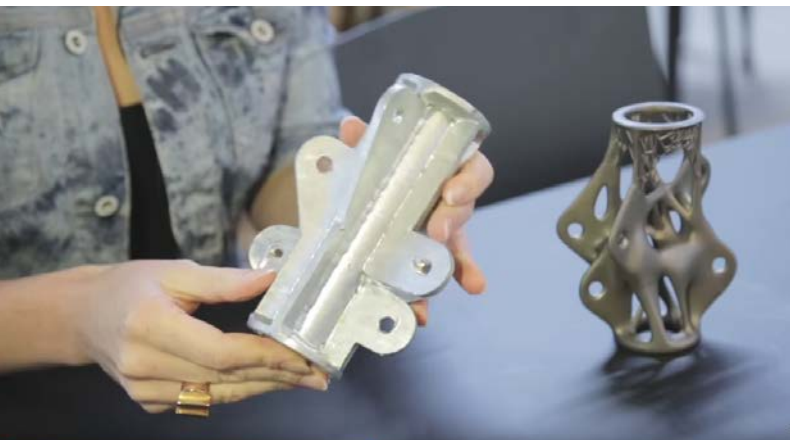
ers typically come in a designed enclosure with more robust controls and monitoring systems that allow larger volume printing and materials that range in price from \$2,000 to \$6,000. Beyond this, you may be looking at high-end production printers that could easily eclipse the \$100,000 mark.

There are several types of 3D printers in the market today, but they all utilize a computer 3D model. The most common 3D printer, a Fused Deposition Modeling (FDM), utilizes a spool that feeds a heated nozzle that melts the raw material and lays it down on a preconfigured path in layers that bind to each other to accumulate, creating a 3D model. This is by far the most common printing methodology and allows for a combination of colors and various materials.

The next type of 3D printing uses stereolithography (SLA) technology and it uses liquid that is fused in layers with LED/Laser congealing the liquid into a solid surface one layer at a time. This method is faster



3D printed light pendant.



3D-printed structural components will lead to new building shapes.
<https://youtu.be/UvR8TV5ym0>



3D-printed home can be constructed for under \$4,000.
<https://youtu.be/wCzS2FZoB-I>

than the FDM option and can produce medical grade parts (Retainers, etc.) but they typically have a smaller footprint and are much more expensive because of the technology and the material cost.

As with all 3D printing the strongest case to utilize one is currently for prototyping and assessing design reiteration prior to proceeding to large scale manufacturing. Applications range from commercial product design prototypes or medical devices to of course construction. Within construction applications, 3D printing presents an opportunity to create completely customizable structural connections that leverage reiterative design and lack the infrastructure needed to support typical mass production in an assembly line setting.

While full scale building modules have already been produced in small numbers, they have mostly been experimental in nature and fairly rudimentary in design features. 3D printing for full scale housing is possible due to the supersizing of the traditional 3D printer concept to an industrial scale gantry crane leveraging the same variable plane (x, y, z) movements to generate the layering of materials such as cement or other composite materials.

Another area of 3D printing that is materializing leverages robots with six degrees of movement, rather than one robotic arm, to allow more range of movement as well as materials. Some advanced testing uses this method to weld a steel foot bridge while self-building the track that allows the printing robot to progress without the need for additional scaffolding or supports. Another manifestation of 3D printing has a strong case for NASA as it tries to study the feasibility of colonizing planets that have no natural resources other than soil to create a suitable habitat without the extremely costly prospect of transporting raw materials from earth to mars.

The AEC community is just beginning to incorporate 3D printing as it becomes a more applicable method of manufactured construction. 3D printing has yet to be fully embraced due to the technical nature of 3D computer modeling and the need for calibrating and troubleshooting (depending on the specific print, this can be quite cumbersome). This will dissipate as 3D printers are becoming more reliable and the available 3D model libraries become streamlined to support the general consumer within the next 5 years. Looking



Producing the world's first 3D-printed bridge with robots "is just the beginning."
<https://www.dezeen.com/2015/12/30/video-interview-robots-worlds-first-3d-printed-bridge-mx3d-joris-laarman-movie/>



World's first 3D-printed steel bridge.
<https://www.dezeen.com/2018/10/22/worlds-first-3d-printed-steel-bridge-completed-mx3d-technology/>



NASA's 3D-printed Mars habitat challenge.
https://www.nasa.gov/directorates/spacetech/centennial_challenges/3DPHab/index.html
https://youtu.be/CZEUYKePV_0

past this time frame, In the combination of 3D printing methods, new material options, and the maturity of AI will revolutionize the manufactured construction industry in the next 20 years.

While manufacturing has relied on robotics and automation for many years the construction industry has been hampered by the incredibly variable nature of operating a jobsite. AI can in large part address these variables by learning all the unique conditions that can possibly occur with sub-assemblies that are standardized. Given the projections of population growth and lack of qualified labor 3D printing should be a positive evolution of the industry. 3D printers can already print replacement parts to repair themselves, so it stands to reason that in the future they will be capable of analyzing and repair themselves. This capability has benefits that would be particularly critical for remote location uses proposed in human exploration. On the cautionary side, it also makes science fiction like HBO's 'Westworld' appear eerily possible in our lifetime. 🤖

References:

https://en.wikipedia.org/wiki/3D_printing



Fox Rothschild LLP
ATTORNEYS AT LAW

***Proud Sponsor of the
Washington Building Congress***

**Experienced Construction
Litigation Attorneys and
Trusted Business Advisers in
the Private and Federal Arenas**

Reggie Jones

Office Managing Partner, DC
Chair, Fed. Gov. Contracts
202.461.3111
rjones@foxrothschild.com

Dirk Haire

Construction Partner
Co-Chair, Construction
202.461.3114
dhaire@foxrothschild.com

Doug Hibshman

Construction Partner
202.461.3113
dhibshman@foxrothschild.com

Nick Solosky

Construction Partner
202.696.1460
nsolosky@foxrothschild.com

Sean Milani-nia

Construction Partner
202.461.3105
smilani@foxrothschild.com

2019 Annual Sponsors

CORPORATE SPONSOR



Fox Rothschild LLP
ATTORNEYS AT LAW

Fox Rothschild LLP is a full-service, national law firm known for its responsiveness and agility in problem solving. Fox's attorneys are well-versed at navigating the complex landscape of the construction industry, from compliance advice to claims litigation involving federal contracts and large-scale, complex commercial projects. Built to serve businesses of all sizes, we have grown over the past century to 750 lawyers in 22 offices coast to coast. At Fox, we care about your success as much as you do.

STEEL SPONSORS

AECOM TISHMAN



SIEMENS
Ingenuity for life

SKANSKA



ALUMINUM SPONSORS



CONCRETE SPONSORS

Asmar, Schor & McKenna, PLLC
Clark Construction Group, LLC
Clune Construction
Cohen Seglias Pallas Greenhall & Furman PC
DPR Construction
EDG2, Inc.

Grunley Construction Company
HITT Contracting
PCC Construction
Peckar & Abramson, PC
Rosendin Electric, Inc.

AGGREGATE SPONSORS

ECS Mid-Atlantic, LLC

Hensel Phelps

JE Dunn Construction

Member Projects

Queens Court Ground Breaking

Arlington Partnership for Affordable Housing (APAH) hosted a ground breaking party for the **Queens Court** project at Barley Mac in Arlington earlier in April. The project team and representatives from **Donohoe Construction** were in attendance to celebrate the start of the newest affordable housing project in the Donohoe portfolio.

“This is one of the coolest projects the DC area has seen in a while,” said Chairman of Arlington County Board, Christian Dorsey, in his speech at the event. “On a measly acre where there were 49 units there are going to be 249 units.”

According to APAH, “The redeveloped Queens Court will have a majority of two- and three-bedroom units for families earning 40-60% AMI. The site will also have 150 underground parking spaces. In addition, the redeveloped Queens Court will be barrier free, green, and certified EarthCraft Gold.”

The party was attended by public officials, Bank of America representatives, lawyers, and community representatives in addition to APAH and Donohoe staff. Said CEO of APAH, Nina Janopaul, “We’re excited to put this next phase on Donohoe.”



Queens Court Ground Breaking Celebration



Takoma Place Apartments Renovation

NHP selected **WCS Construction, LLC** for the renovation of **Takoma Place Apartments** in the Brightwood neighborhood of Washington, DC. Designed by **Studio K Architecture**, the 106-unit project includes significant upgrades with new kitchens, bathrooms, energy upgrades, windows, appliances, HVAC, new plumbing and electrical, as well as a new community center. The project has a targeted completion date of February, 2020. **F**



Kohn Pedersen Fox is proud to support the Washington Building Congress and congratulates this year's Honorees

KPF



SIEMENS
Ingenuity for life

Ingenuity for life creates perfect places.

We spend around 90 percent of our lives indoors. So buildings are far more than just four walls. At Siemens, we make those experiences better by making those places more comfortable, safe, secure and sustainable. It takes Ingenuity for life to create these perfect places – to give people a place to achieve their most ambitious goals, to give them a place where they can be successful and live the life they want.

#CreatingPerfectPlaces

usa.siemens.com/perfect-places

New Members

New Company Members

Curtis Investment Group

5620 Linda Lane
Camp Springs, MD 20748
P: 301-702-3200
www.curtisinvestments.com
REPRESENTATIVES: **JEREMY MORRISON,**
MIKE MYERS

Faithful+Gould

2318 Mill Road, Suite 1410
Alexandria, VA 22314-6868
P: 703-684-6550
www.fgould.com
REPRESENTATIVE: **ADRIAN M. COFFIN**

Garney Construction, Inc.

4515 Daly Drive, Suite K
Chantilly, VA 20151
P: 703-794-6190
www.garney.com
REPRESENTATIVES: **DAN BUCKLEY,**
JORDAN CARRIER

IVCI LLC

2147 Priest Bridge Drive
Crofton, MD 21114
P: 631-273-7277
www.ivci.com
REPRESENTATIVES: **CHRIS ANTONELLI,**
WILLIAM GRANT, JARED LEIB

National Deconstruction & Rolloff

22530 Gateway Center Dr., Suite 300
Clarksburg, MD 20871
www.natldecon.com
P: 240-631-6677
REPRESENTATIVE: **DANIEL SCHALL**

Plano-Coudon Construction

2101 Washington Boulevard
Baltimore, MD 21230
P: 410-837-2570
REPRESENTATIVES: **FARON CARTER,**
JARED GEARY, MICHAEL JUNKIN

Professional Service Industries, Inc. (PSI)

2930 Eskridge Road
Fairfax, VA 22031
P: 703-698-9300
www.intertek.com/building
REPRESENTATIVES: **NICK MANSOURI,**
MIKE NEWMAN



COHEN SEGLIAS
PALLAS GREENHALL & FURMAN PC
Attorneys at Law



1828 L Street, NW
Suite 705
Washington, DC 20036
202.466.4110

www.cohenseglias.com
www.constructionlawsignal.com
www.fedconblog.com
www.investigationslawblog.com

PENNSYLVANIA NEW JERSEY NEW YORK DELAWARE WASHINGTON, DC KENTUCKY



BOATMAN AND MAGNANI, INC.

TERRAZZO ■ MARBLE ■ TILE ■ MOSAICS ■ STONE ■ GRANITE ■ SLATE

600 Ritchie Road, Capitol Heights, MD 20743 P: 301.336.7700

New Members

United Stone and Tile

14000 Thunderbolt Place, Suite R
Chantilly, VA 20151
P: 703-468-4884
www.unitedstoneandtile.com
REPRESENTATIVES: **JENNA BAKIR,**
MUSTAFA KUCUKAYDIN, NALAN MUTLU,
THOMAS TODD

New Small Business Members

Datum Contracting East, LLC

6701 Democracy Boulevard, Suite 300
Bethesda, MD 20817
P: 202-747-4459
www.datumcontracting.com
REPRESENTATIVE: **SEAN FRAZIER**

EarthCam

650 E. Crescent Avenue
Upper Saddle River, NJ 07458
P: 201-488-1111
www.earthcam.net
REPRESENTATIVE: **ROBYNN FORREST**

Mahogany, Inc.

910 W. Pratt Street
Baltimore, MD 21223
P: 443-463-0121
www.mahoganyinc.com
REPRESENTATIVE: **JEFF HARGRAVE**

Meta Engineers, P.C.

1515 Wilson Boulevard, Suite 710
Arlington, VA 22209
P: 703-224-1188
www.metaengineers.com
REPRESENTATIVE: **DONNA CASTELLI, P.E.**

Oppenheimer & Co.

5301 Wisconsin Avenue, NW, Suite 300
Washington, DC 20015
P: 202-261-0746
REPRESENTATIVE: **EDWARD DUDLIK**

Smith-Midland Corporation

5119 Catlett Road, PO Box 300
Midland, VA 22728
P: 540-439-3266
www.smithmidland.com
REPRESENTATIVES: **ASHLEY SMITH,**
MATTHEW SMITH

Soil Consultants Engineering, LLC (SCE)

9303 Center Street
Manassas, VA 20110
P: 703-366-3000
www.soilconsultants.net
REPRESENTATIVE: **DOUGLAS S. SMITH**

New Member Profiles

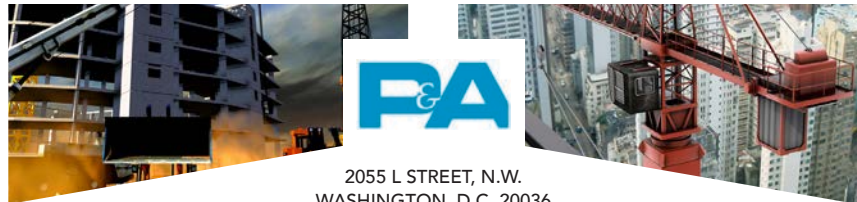
Datum Contracting East, LLC

We know that you can do business with any number of general contractors, but our goal is to prove to you why you should work with us, time and time again. We begin each new project with the same processes, devotion and mindset, regardless of how large or small it is. With our hands-on methods and transparency from start to finish, we strive to show our clients that we have no hidden agendas.

With Datum, what you see is what you get. We are dedicated to ensuring that our clients are happy throughout the construction process and projects are delivered safely, on time and within budget.

EarthCam

EarthCam is the leading provider of webcam technology and services since 1996. EarthCam provides live video, time-lapse construction cameras and photography documentation for clients worldwide.



2055 L STREET, N.W.
WASHINGTON, D.C. 20036
+1 202 293 8815

Peckar & Abramson, P.C.

C O U N S E L T O T H E C O N S T R U C T I O N I N D U S T R Y
NEW YORK, NY • RIVER EDGE, NJ • MIAMI, FL • WASHINGTON, D.C. • LOS ANGELES, CA
OAKLAND, CA • CHICAGO, IL • AUSTIN, TX • DALLAS, TX • HOUSTON, TX
WWW.PECKLAW.COM



ENGINEERING DESIGN GROUP

LEADERS

➔

MEP Engineering for
Building Industry

RELIABILITY

SUSTAINABILITY

AVAILABILITY

[ISO 9001-2008 Certified]

www.edg2.com

PCC

CONSTRUCTION COMPONENTS
INCORPORATED

ARCHITECTURAL WALL SYSTEMS

Design assist specialty contractor supporting the building envelope
with custom curtainwall and architectural wall systems.

7600-C Lindbergh Drive, Gaithersburg, MD 20879
301.417.1020 | www.teamgcc.com

N **ew Members**

Faithful+Gould

Faithful+Gould is a leading project management consultancy protecting and maximizing our clients' interests in the planning and delivery of construction and renovation projects. Our Washington DC office provides Project Management, Construction Management, Program Management, Cost Estimation, Project Controls, Scheduling, Claims Management, and Facilities Condition Assessment Services. Our teams are specialists in projects large and small.

Garney Construction

Garney Construction is one of the largest water and wastewater construction companies in the United States for public, private, industrial and federal clients, with *ENR* 2018 rankings as: #1 in Water Supply, #1 in Water Transmission Lines, #3 in Top 30 All-Environmental Firms, #4 in Wastewater Treatment Plants, #4 in Sewerage and Solid Waste, and #5 in Water Treatment Plants. Being ranked top in the industry displays the depth of

our experience and knowledge with the various water infrastructure components. Integrity and hard work are part of our culture, and we are proud it allows us to be recognized as an industry leader and now part of the WBC.

IVCI LLC

IVCI is a nationwide integrator that creates, builds and supports collaborative environments for people who want to lead, teams that want to connect and companies that want to evolve. This is accomplished by utilizing the very latest audio visual, unified communication and "as a service" products available. Our solutions provide the functionality, aesthetic and value that can only be achieved through best-in-class service, second-to-none expertise and a one-of-a-kind adoption and utilization program.

Mahogany, Inc.

Mahogany Inc., based in downtown Baltimore, MD, has provided premier construction services since 1991 in the

mid-Atlantic region. We specialize in general contracting, millwork and commissioning services. The heart of our philosophy focuses on optimal customer satisfaction and our employees are the strength of our business. From your initial contact to the completion of your project, we at Mahogany strive to ensure excellence.

Meta Engineers, P.C.

Mechanical and electrical consultants.

Oppenheimer & Co.

Oppenheimer & Co. delivers customized strategies to retirement plan sponsors and participants. From plan design to participant guidance, we help managed fiduciary responsibility and implement the appropriate processes for plan decision-making. Our guidance is always unbiased and in the best interest of the plan sponsor and its employees. Through our Executive Services department, we can also develop comprehensive strategies to address wealth transfer, advanced estate planning and business succession needs.

**IBEW Local Union 26—
Proudly powering Washington, DC,
Maryland, and Virginia for over 125 years!**

Quality Craftsmanship with Pride

4371 Parliament Place, Lanham, MD 20706 • 301-459-2900
www.ibewlocal26.org • www.facebook.com/ibew26

N New Members

National Deconstruction & Rolloff

Commercial Demolition contractor in the DMV that offers full service hauling, abatement, wrecking & structural/non-structural demolition.

Plano-Coudon Construction

Based in Baltimore, MD, Plano-Coudon Construction brings big-company sophistication, small-company flexibility, an engineer's mindset and unparalleled enthusiasm to a broad range of construction projects. Since opening in 1998, we have developed deep expertise in multiple construction sectors, and provide construction management, general contracting and design/build services in the Maryland, DC, Virginia, Pennsylvania and Delaware areas. We live by the motto: Your vision is our mission. Determined to be a trusted construction advisor and a best-in-class contractor, we work on fully understand—and meet—each client's goals.

Professional Service Industries, Inc. (PSI)

PSI, a leading provider of engineering and environmental services, offers a wide range of services from 125 offices nationwide to clients involved with site selection, design, construction or property management. PSI's services include environmental consulting, geotechnical engineering, construction materials testing and engineering, industrial hygiene, and facilities engineering and consulting.


Smith-Midland Corporation

Smith-Midland Corporation manufactures SlenderWall Precast/Steel Stud Architectural Wall System, Easi-Set Buildings, Easi-Set Utility Vaults and Manholes, Sound Wall/Retaining Wall, J-J Hook Safety Barrier, Transportation Products, Utility Structures, Beach Prism Shore Erosion Protection, and Agricultural Products.

Soil Consultants Engineering, LLC (SCE)

SCE is a 59-year, family owned and operated geotechnical engineering and construction inspection and material testing firm. We work in Virginia, Maryland and DC and are one of few companies approved by DCRA to perform special inspection and third-party inspections.

United Stone and Tile

United Stone and Tile provides quality craftsmanship in and outside of the Washington Metropolitan Area using top of the line tile, marble and granite products. 

AECOM Tishman proudly serves the Washington Building Congress!



aecomtishman.com

AECOM TISHMAN

Calendar of Events

Dates and times subject to change.

April 2019

April 24, 2019
4:00 pm to 6:00 pm
BOARD OF DIRECTORS MEETING #4
WBC Conference Room

April 27, 2019
8:00 am to 4:00 pm
REBUILDING TOGETHER WORKDAY
Burke, VA
WBC Members Only

May 2019

May 3, 2019
5:00 pm to 7:00 pm
HAMMERHEADS NETWORKING POTOMAC RIVER CRUISE
Pier 4, 580 Water Street, SW - Washington, DC
Must be Preregistered and Prepaid
Limited to 80 attendees.
Open to Hammerheads Only (under 40 years old)

May 2019 cont.

May 9, 2019
2:00 pm to 5:00 pm
HOW TO DO BUSINESS WITH GSA & SMALL BUSINESS MEET THE GCS
Balfour Beatty Construction Office
ATTENDANCE IS LIMITED - MUST BE REGISTERED BY MAY 6

May 22, 2019
5:00 to 7:00 pm
SPRING NETWORKING
Mission Navy Yard | Washington, DC

June 2019

June 10, 2019
GOLF OUTING
Leesburg, VA
Golf Club at Lansdowne and Belmont Country Club - Virginia

June 19, 2019
4:00 pm to 6:00 pm
BOARD OF DIRECTORS MEETING #5
WBC Conference Room

August 2019

August 21, 2019
SUMMER NETWORKING
Cactus Cantina | Washington, DC

September 2019

September 11, 2019
ANNUAL BOARD LEADERSHIP DINNER
BY INVITATION ONLY

September 26, 2019
5:30 pm to 8:30 pm
FALL KICKOFF
Columbia Country Club | Chevy Chase, MD

December 2019

December 10, 2019
6:00 pm to 8:30 pm
HOLIDAY PARTY
Congressional Country Club | Bethesda, MD

Advertising Information

The **Bulletin** covers issues of importance to the building industry, news about WBC members and information about upcoming events. The topics listed below will be covered as feature articles in upcoming issues of the **Bulletin**. Persons interested in contributing information or advertising should contact WBC before the third week of the month preceding the issue. The **Bulletin** is published six times a year by WBC. To place an ad, submit material or for more information call **202.292.5922**.

Editorial Calendar

December / January	Members Giving Back
April / May	Craftsmanship Awards
June / July	Rebuilding Together
August / September	Marketing & Communications
October / November	WBC Leadership & Committees

Ad Sizes

Magazine trim size: 8.5"w x 11"h | Live area: 8.375"w x 10.875"h

Member Rates:	1 time	3 times	6 times
1/6 horizontal or 1/6 vertical	\$155	\$130	\$110
1/3 vertical or square	\$230	\$190	\$150
1/2 horizontal or vertical	\$430	\$350	\$290
Full-page	\$630	\$510	\$410

Position	1 time	3 times	6 times
Inside Front Cover	\$830	\$670	\$540

Non-Member Rates:	1 time	3 times	6 times
1/6 horizontal or 1/6 vertical	\$210	\$176	\$149
1/3 vertical or square	\$311	\$257	\$203
1/2 horizontal or vertical	\$581	\$473	\$392
Full-page	\$851	\$689	\$554

Position	1 time	3 times	6 times
Inside Front Cover	\$1,121	\$905	\$729

1/6 horizontal	4.43"w	x	2"h
1/6 vertical	2.1"w	x	4.2"h
1/3 square	4.43"w	x	4.2"h
1/3 vertical	2.1"w	x	8.6"h
1/2 horizontal	6.75"w	x	4.2"h
1/2 vertical	4.43"w	x	6.38"h
Full-page	8.25"w	x	10.75"h
Full-page + bleed	8.5"w x 11"h		+ .125" bleed