

Bulletin

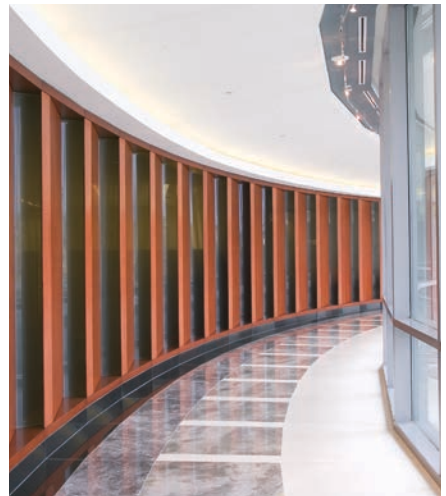
The Official Publication of the Washington Building Congress | Dec. 2017 / Jan. 2018

Inside

Industry Report.....	3
Guest Article.....	7
Members Give Back.....	8
Member Projects.....	22
New Members.....	28
WBC Calendar.....	32



A TESTIMONIAL
TO EXCELLENCE



Premium Grade Architectural Woodwork and Casework
Acoustical Wall and Ceiling Treatments
Hospital and Laboratory Casework and Lockers
Architectural Metal, Stone and Solid Surfacing

Bulletin

December 2017 / January 2018

Washington Building Congress is a nonprofit association made up of professionals from a variety of disciplines, all with an active interest or involvement in the Washington Metropolitan Area's real estate, design, and construction community. The organization was established in 1937 to represent the collective interests of its members by providing education and networking opportunities and by promoting the advancement of the building industry. For additional information about membership, joining a committee or the WBC Bulletin, call (202) 293-5922 or visit us on the web at www.wbcnet.org.

CHAIRMAN OF THE BOARD

Dan Buckley, Anchor Construction

CHAIRMAN-ELECT

Mike Baruccheri, AECOM Tishman

VICE CHAIRMAN

Chuck Claar, Branch and Associates

VICE CHAIRMAN

Brett Snyder, GreenBench Companies

VICE CHAIRMAN

W. Emerson Teer, Clark Construction Group, LLC

TREASURER

Pat Mercer, Siemens Industry

SECRETARY

Bob Freas, Exponent

IMMEDIATE PAST CHAIRMAN

Joe Schall, Pepco

DIRECTORS

Ken Ellis, Langan Engineering

Julie Forsht, Powersmiths

Sean Frazier, HSU Builders

Bob Frew, Balfour Beatty Construction

Christine Heffernan, HESS Construction + Engineering Services

Mike Holland, Boston Properties

Gabriel Jahn, Dynalectric Company

Greg Koger, Holland & Knight

Tara McCarthy, Page Southerland Page

PRESIDENT & CEO

Steven J. Kenton

ASSOCIATE DIRECTOR

Rita F. Reis

Bulletin is published 6 times a year by Washington Building Congress, Inc. The articles in this publication are the opinions of the authors and do not necessarily represent or reflect the policies or opinions of Washington Building Congress. Copyright 2018. All rights reserved.



Washington Building Congress
1100 Vermont Avenue, NW, Suite 700
Washington, DC 20005
T: (202) 293-5922 | F: (202) 429-1922
www.wbcnet.org

Chairman's Letter

Dear Members and Colleagues:



Since the beginning of the new membership year last October, all WBC committees have been meeting monthly and are moving forward with planning for 2018. I would like to personally thank our committee members, chairs, vice-chairs, and board liaisons for volunteering their time and expertise. Special recognition also goes to the Membership Services Committee, Chair Alfredo Llop (K2 Construction Consultants), Vice-Chair Kelly McGuire (Ruppert Landscape), and Board Liaison Tara McCarthy (Page Southerland Page) for their outstanding work on retention and recruitment. The first 2018 new member orientation will be held next month and invitations will be sent to all new members joining over the past year. You are encouraged to join us for this informative session held at the WBC office if you have not previously attended.

I would like to thank the Community Services Committee and all of the WBC member firms who participated in the annual "Members Giving Back" edition of the *Bulletin*. The committee's next major project will be the April 28 Rebuilding Together Workday. This year's team will be reaching out to member firms seeking essential donations of labor and materials starting in March. Thanks again to the Community Services Committee, Chairs Vanessa Carrion (Gilbane Building Company), Vice-Chair Edward Dudlik (Morgan Stanley), and Board Liaison Ken Ellis (Langan Engineering) for their amazing team effort.

The Hammerheads Committee has two exciting events planned for members under 40 years old over the next few months. On February 1, the group is returning to Lucky Strike in the District for one of their most popular networking events. The Hammerhead's Potomac River Cruise is planned to be held on Friday, May 4 this year. This event is limited to 80 people and has been a sellout the past 5-years. Special recognition goes to the Hammerheads Committee, Chair Adam Lackey (Exponent), Vice-Chair David Stocks, Jr. (Anchor Construction) and Board Liaison Gabriel Jahn (Dynalectric Company) for putting these exciting events together.

The 62nd annual WBC Craftsmanship Awards program received 255 excellent entries this year. I would like to extend special thanks to the 190 construction professionals who volunteered a full day of their time as judges on January 11. Following the day of judging, the Membership Services Committee hosted the Winter Networking event at Maggiano's with over 200 in attendance. We are expecting 1,200 people to join us for an evening of celebration during the Craftsmanship Awards banquet on Friday, March 16. Please take a moment to review the great sponsorship opportunities available for this year's program and be sure to save the date. Thank you to the Craftsmanship Awards Committee, Chair Todd Scales (Manhattan Construction), Vice-Chair Karen Cotton (HITT Contracting Inc.) and Board Liaison Sean Frazier (HSU Builders).

I look forward to seeing you at one of the upcoming WBC events. Once again, thank you to all of our renewing WBC members and welcome to all new members. We look forward to your active participation and ongoing support of our extraordinary association.

Best regards,

Dan Buckley

WBC Chairman of the Board

CONNECT WITH US:



WBC Corporate Sponsor



RECENT AWARDS

↓
ABC 2014, 2016 & 2017
Masonry Subcontractor
of the Year

↓
ABC 2014, 2015, 2016 & 2017
Safety Training & Evaluation
Process Award, Gold Level

↓
WBC 2014 & 2017
Craftsmanship
Award

↓
ASA 2014
Carson V. Carlisle Jr.
Safety Award

PARC MERIDIAN
at Eisenhower Station

Architect:
Architects Collaborative, Inc.

General Contractor:
Paradigm Contractors, LLC



Telligent

Masonry Construction

2273 Research Boulevard | Suite 550
Rockville, Maryland 20850
(301) 926-9600



————— YEARS —————

©Ron Solomon Architectural Photography

T e l l i g e n t M a s o n r y . c o m



Page Welcomes Courson



Robert Courson

Recognizing the dynamism of development on the East Coast, Page is establishing a regional engineering team with new leadership and broad technical capabilities.

An industry expert in the design and construction of high-reliability facilities, **Robert Courson**, joins the firm as an Associate Principal / Senior Mechanical Engineer and will spearhead the growth of the engineering team in the Washington, DC office.

With more than two decades of experience in the nation's capital city, Courson is both a registered engineer and architect with an appreciation for how different perspectives enhance results. His portfolio ranges from managing the construction of more than one-million square feet of federally-secured IT space to numerous complex healthcare and lab facilities to a recent mixed-use Digital Eco-Village occupying an entire city block. His decades working on high reliability facilities has taught him how to get things done quickly while paying attention to the details.

Page Principal Andy Baxter notes that for several years Page has been looking to expand its engineering expertise to the Washington, DC office, in order to both support the existing architecture team and also to increase our visibility in the region, especially within the mission critical and healthcare industries. "Rob brings the knowledge and experience to not only support this goal," says Baxter, "but to also eventually develop a fully staffed engineering group that can work hand in hand with the other engineering resources currently located in the three Texas offices."

As head of the new engineering team in Washington, DC, Courson is an important addition to the office leadership. "We are delighted to welcome Rob to the Page team," notes Senior Principal Thomas McCarthy. "His experience with complex projects in mission critical environments complements our core strengths and the needs of our clientele. Rob's portfolio



A full service agency specializing in risk management in the construction industry.

"HESS has worked with Insurance Associates since 2008 and we continue to be impressed with their attention to detail, responsiveness, and customer focus. They clearly have vast knowledge in their specialty areas, provide focused representation, and always perform in a way that enhances their reputation. They have helped us navigate through numerous matters over the years and have always been an excellent partner with our best interests at heart. We look forward to continuing our partnership with Insurance Associates for many years to come."

-Chuck Hess, Chief Executive Officer

60 YEARS STRONG

Knowledge / Representation / Reputation



KEEP BUILDING PARTNERSHIPS.

Our subcontractors' qualifications, skill and commitment are key to Forrester's success. That's why building solid, long-term partnerships is so important to us. Forrester's subcontractor partners know they can rely on our teams and we know they will deliver quality results.

www.forresterconstruction.com/subcontractors



Full Service Electrical Contractor Specializing in the Following Services:

- 24-hour Emergency Service
- Preventive Maintenance Services
- Infrared Thermography Scan
- Lighting Retrofits
- Estimating/Budget Services
- Mission Critical Facility Maintenance
- Service Contracts
- Generator/UPS Installations
- Design-Build/Assist Capabilities
- 3D Modeling
- Fire Alarm Tenant Fit-out
- Fire Alarm Retrofits of Existing Systems
- Fire Alarm/Sprinkler Testing & Service

Celebrating 50+ Years of Gold Standard Service!



22930 Shaw Road, Suite 100, Dulles, VA 20166
Call: 703-724-3500
Visit: www.dynalectric-dc.com

includes collaboration with Page engineering projects going back over two decades. His recent accomplishments demonstrate technical acumen, attention to detail, and a creative design approach that will certainly improve the environments we create.”

Mitchell Named Executive Director of Washington, DC Chapter of NECA

Denise E. Mitchell has been named Executive Director of the Washington, DC Chapter of the National Electrical Contractors Association (NECA). She replaces retiring executive director, Andrew Porter, who will stay on until the end of the year.

Mitchell has extensive experience both in the labor sector as well as the association world. She served as executive director of the Howard University Medical Alumni Association, labor relations and compliance programs manager with DC Water and senior labor relations officer at the Washington Metropolitan Area Transit Authority (WMATA).

In her new role as executive director, Mitchell will serve as spokesperson for the electrical contracting industry in the Washington, DC area. Through her leadership, she will strive to improve communications within the trade and also build relationships with NECA members and leadership of the International Brotherhood of Electrical Workers (IBEW) Local 26. Mitchell will also serve as an advisor to the trustees of The Electrical Alliance, the Labor Management Cooperative Committee (LMCC) between NECA's DC Chapter and IBEW Local 26.

Mitchell earned her law degree in Employment and Labor Law from Howard University School of Law and undergraduate degree in Education and Industrial Psychology from the State University of New York–New Paltz. She is a certified Human Resources Professional, a designation of SPHR from the Society of Human Resources Management; a Certified Public Manager through the Metropolitan Council of Governments Executive Leadership Program at George Washington University and a certified EEO investigator.

P **PIONEER**
Cladding & Glazing Systems

Proud New Member of the WBC

513.583.5925 - www.pioneerglazing.com

The advertisement features a large, stylized letter 'P' in the top left corner. Below it, the word 'PIONEER' is written in large, bold, red capital letters. Underneath 'PIONEER', the words 'Cladding & Glazing Systems' are written in a smaller, black, sans-serif font. The background of the advertisement is a photograph of a modern glass skyscraper reflecting the sky and surrounding buildings. In the foreground, there are streetlights and traffic signs. At the bottom of the advertisement, the text 'Proud New Member of the WBC' is written in a bold, black, sans-serif font. Below that, the phone number '513.583.5925' and the website 'www.pioneerglazing.com' are displayed in a bold, black, sans-serif font.

WCS
CONSTRUCTION

BUILDING PARTNERSHIPS *EXCEEDING EXPECTATIONS*

[f](#) [in](#) www.wcsconstruction.com

**AECOM Tishman proudly serves
the Washington Building Congress!**

aecomtishman.com

AECOM TISHMAN

“Our members have helped build our nation’s capital – one of the most beautifully lit cities in the world – from monuments to ballparks, government offices to campuses and public spaces, entire building updates to small contract jobs,” said Mitchell. She added, “I’m excited to cooperatively lead our industry forward – here in the DC area, harness new electrical technologies and expand our membership of electrical contractors and their skilled workforces.”

Asmar Elected as New ACCL Fellow

Asmar, Schor & McKenna (ASM) announced the election of **Chuck Asmar** (Past WBC Chairman of the Board, 2011) as a New Fellow to the American College of Construction Lawyers (ACCL). The ACCL is a national organization of lawyers who have demonstrated skill, experience and high standards of professional and ethical conduct in the practice, or in the teaching, of construction law, and who are dedicated to excellence in the specialized practice of construction law.

Asmar is ASM’s second ACCL fellow, joining partner Larry Schor, who was a founding member of the ACCL, served on the Board of Governors, and was President of the College from 2001-2002.

Dominion Electric Supply Opens Second Baltimore Location

Dominion Electric Supply Company, Inc. recently opened their 10th branch location and the second serving the Baltimore Metropolitan Area. The new branch is located north of the tunnels at 6 Nashua Court, Middle River and comprises 12,000 square feet, stocks over 15,000 items, and offers a local staff of product experts.

Dominion Electric Supply Company operates nine branches and three lighting showrooms in the Baltimore Washington Metro Area, and wholly owns one subsidiary, Dominion Electric Supply Company of Washington, LLC. Founded in 1940 and a third-generation family owned business, Dominion is a full line electri-

What’s under our hard hat?

HISTORIC RENOVATION



GRUNLEY

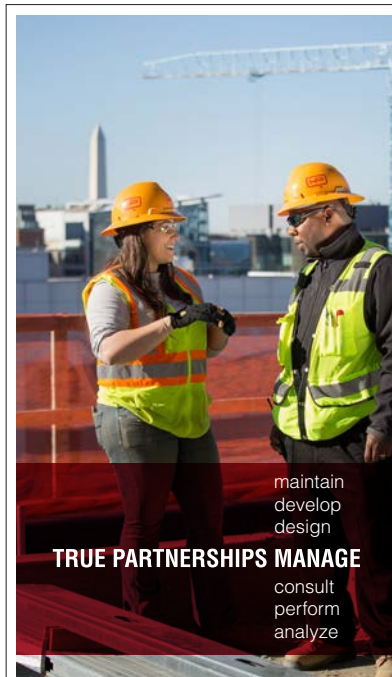


FOOD & FRIENDS®

Help prepare and package, meals for and delivers meals and groceries to more than 1,400 people living with HIV/AIDS, cancer and other life-challenging illnesses throughout the Washington area.

foodandfriends.org

cal distributor selling electrical supplies, lighting fixtures, distribution equipment, electric heating, and data products for commercial and residential applications. **B**



maintain
develop
design

TRUE PARTNERSHIPS MANAGE

consult
perform
analyze



HENSEL PHELPS
Plan. Build. Manage.

Learn more at henselphelps.com

in f @

Habitat for Humanity of Northern Virginia

We have 100 reasons to get involved with us in 2018!

Struggling with unpredictable rent increases, overcrowded conditions, and shutout of affordable market options and financing, many hard-working, low-income Northern Virginia families live a constant burden of uncertainty, stress, and fear. Thanks to our vanguard partnership with the Washington Building Congress member firms and their employees, Habitat for Humanity of Northern Virginia (Habitat NOVA) is building lives as well as homes for local families in need.



WBC members have been instrumental in our mission to serve families in Fairfax and Arlington counties as well as the cities of Alexandria, Fairfax, and Falls Church. Individual and corporate financial supporters and volunteers, like WBC members, ensure that our home project construction costs remain low, typically saving us 75% on labor. Generous in-kind donations also help reduce our need for purchased building materials.

These dramatic savings allows us to provide qualified Habitat NOVA families with 30-year mortgages, with 1% down payment and 0% interest structured to be 1/3 of the families' income; often less than their current rental payment. Habitat NOVA families also work along with dedicated WBC volunteers and other corporate supporters to build their own home and acquire the financial and home maintenance education to ensure stability and safety for their children.

This year marks a major milestone in our 25+-year history—*one that we are excited to shout from the rooftops!* This spring, we begin construction on our 99th and 100th Habitat NOVA homes, located side by side in the Mount Vernon District of Fairfax County. Besides representing major construction milestones for our affiliate, these two homes will bring strength, stability, and independence for a Vietnam Veteran and a future Habitat NOVA family.

We invite WBC member firms and their employees to join in supporting Habitat NOVA as we work toward “100 Families Served” since our inception. Our upcoming community outreach campaign will spotlight the dedicated support of our corporate donor and volunteer partners as well as raise prominent community awareness for affordable homeownership.

Be part of an extraordinary give back to Northern Virginia families and their children. Support Habitat NOVA by participat-



ing in our upcoming milestone events. Together we can rally the community around the importance of affordable homeownership, and the transformational impact homeownership brings to local families in need.

1. Go OVER THE EDGE for Habitat NOVA

Friday, May 18 (Corporate Sponsor and Media Day)

Saturday, May 19 (Individual Participants)

Be one of 100 elite thrill-seeks – our Habitat NOVA Edgers – eager to participate in a high-adrenaline high-rise rappel in Tyson's Corner. *This is not your typical fundraiser!* Help us take stability to new heights for local families. Corporate Sponsorship packages are available. Visit habitatnova.org/OTE for details.

2. 100 Families Served Corporate Sponsor

This 18-month celebration and campaign will run parallel to the build schedule of our 99th and 100th homes, spotlighting the accomplishments of Habitat NOVA and our partners. Campaign milestones include a groundbreaking ceremony and media event in the spring of 2018, corporate build days, and prominent corporate partnership recognition at our major fundraising events, ReStore locations, collateral materials, and community engagement presentations. For more information, contact Penny Bolden at pbolden@habitatnova.org or 703-521-9890.

Together we can rally the community around the importance of affordable homeownership, and the transformational impact homeownership has on a family looking to invest in themselves and their community. **B**



WBC Member Charitable Giving

The Washington Building Congress is pleased to recognize the outstanding charitable contributions of our member firms and their employees. The extent of our industry's positive impact on the community is far reaching and worthy of acknowledgment. Thank you to everyone who contributed to this special edition of the *Bulletin* and please keep in mind that we would like to feature your company's news and activities over the coming year on the WBC website and in the *Bulletin*.

WBC provides several outstanding opportunities throughout the year to give back and support our community. The next major charitable activity will be the annual Rebuilding Together workday project on Saturday, April 28. WBC plans to adopt another house for a deserving family and once again make a positive impact on their quality of life. Please watch for further details regarding the 2018 Rebuilding Together initiative and contact Steve Kenton at the WBC if you would like to volunteer, donate materials or make a monetary contribution.

Thank you for supporting our community, our association and our industry!

WBC Community Services Committee

- Vanesa Carrion, Chair
- Edward Dudlik, Vice-Chair
- Ken Ellis, Board Liaison

Balfour Beatty US

Balfour Beatty teammates wake up every morning with a clear purpose: To be a Relentless Ally for the success of each and every dream we are entrusted to build. That purpose extends to everything we do and helps place community service as a core part of our culture. Across the United States, Balfour Beatty teammates are giving back to our communities, living the commitment to make a positive difference in the places where we work and live by supporting organizations and causes that are important to our business, our employees, and our communities.

In the metro Washington, DC area, Balfour Beatty kicked off 2017 by participating in the Wreaths Across America Clean-Up at Arlington National Cemetery. Also in January, the team from the Penn Medicine New Patient Pavilion project in Philadelphia, PA, participated in CANstruction Philadelphia and donated 3,000 food cans in their structure "Strut for Hunger" to help drive hunger from our community. In May, Balfour Beatty sponsored and participated in the 6th Annual Mary's Center Golf



Balfour Beatty



Balfour Beatty



Balfour Beatty



Balfour Beatty

Members Give Back



Balfour Beatty



Balfour Beatty

where volunteers will place wreaths at the Arlington National Cemetery as well as holding a Holiday Toy Drive to support the Northern Virginia Family Service organization.

Balfour Beatty partnered with Bridges to Prosperity to build a bridge for an isolated community in need in Bolivia. Bridges to Prosperity is a non-profit organization who has supported the construction of more than 200 footbridges in 20 countries. In late September, a team of 11 Balfour Beatty employees, headed to South America to build a 100-meter-long suspension bridge in a remote village in the mountains of Bolivia. The bridge provided a reliable means to travel from the small village of Las Tetillas to a larger community where medical, schools and markets are available. Many thanks to the local sponsors and donors that assisted us with this project.

About Balfour Beatty US

Balfour Beatty US is an industry-leading provider of general contracting, at-risk construction management and design-build services for public and private sector clients across the nation. Performing heavy civil and vertical construction, the company is the US subsidiary of London-based Balfour Beatty plc (LSE: BBY), a leading international infrastructure group that finances, develops, builds and maintains complex building programs focused on social and commercial buildings, power and utility systems, and transportation. Consistently ranked among the nation's largest building contractors, Balfour Beatty US is the No. 3 Domestic Building Contractor as ranked by Engineering News-Record. To learn more, visit www.balfourbeattyus.com and www.bbiius.com.

Tournament, held at the Army Navy County Club, with all proceeds going to Mary's Center.

In June, the Mid-Atlantic team participated in the Armed Forces Cycling Classic Corporate Challenge, competing against other general contractors, clients, and partners while raising funds for charity. Balfour Beatty also had a great showing at the JDRF Real Estate Games, more than 50 teammates participated in 40 different events to help raise \$525,000 for Juvenile Diabetes research. The Mid-Atlantic team took home a few medals too.

Balfour Beatty participated in our first Rebuilding Together Alexandria event in September, converting an empty, under-utilized space within the Charles Houston Recreational Center into a gathering space for 100+ teens in the area, mostly serving children in nearby public housing. Also in September, ten Mid-Atlantic teammates participated in the 16th Annual Arlington Police, Fire & Sheriff 5k Race. All funds were donated to the Pentagon Memorial Fund, Project Enduring Pride, and National Police Suicide Foundation. September closed out with a food drive for September Hunger Action Awareness Month, 17 teams between the office and jobsites participated to support the Northern Virginia Family Services organization.

In November, Balfour Beatty participated in the Northern Virginia Family Service's Operation Turkey. Operation Turkey helped supply Thanksgiving meals to more than 800 families in Prince William County. In mid-December, the Mid-Atlantic office will be participating in Wreaths Across America

Clean Earth, Inc.

Volunteering/Community Service

In October 2017, Clean Earth, Inc., initiated its first Annual Clean Earth Day. Clean Earth team members from across the company volunteered and formed teams to partner with local organizations in their Clean Earth community to hold recycling, cleanup, and beautification events. In total, Clean Earth held eight events across the country which included local community farm and state park cleanups, river and cemetery cleanups, and local paint recycling events.

Clean Earth has a steadfast commitment to sustainability. Our sustainability goals will be carried through thoughtful and diligent sustainable actions. We will continue to protect and conserve our natural resources and improve conditions for our neighbors and wildlife that live in and around our communities' rivers and parks.

Environmental Conservation, Sustainability and Recycling

Clean Earth's Ink & Toner Cartridge Recycling Program was formed to support the Brett Stebulis Memorial Fund and the Gift of Life Organization. The Brett Stebulis Memorial Fund was created in memory of a Clean Earth team member's nephew, Brett C. Stebulis. Empty ink and toner cartridges are collected and recycled to support this foundation which in turn is used to help pay for the education of new EMT's, Paramedics, and Firefighters that can apply to the Fund for scholarship monies to pursue their

Members Give Back



Top: Our team volunteered at the Hamilton Park Community Garden to cut all canna lilies and pack for storage to save and replant for next season.

Bottom: At Clean Earth, each team member is a recycling and sustainability ambassador. We are committed to our communities and our environment in everything we do.

emergency service careers. Brett, was a Firefighter/EMT when he passed away, yet his memory lives on through the quiet kindness of the people we work with every day by the simple act of recycling ink and toner cartridges. In 2017, Clean Earth has recycled over 581 ink and toner cartridges.

To date, the Brett Stebulis Memorial Fund has helped over a dozen individuals continue their education, and assisted a Firefighter and his family that lost their home due to a fire.

Community Forklift

Community Forklift does not sell forklifts. The name refers to our nonprofit mission: to “lift up communities” in the DC area through reuse. We collect donations of reusable building materials and antiques, and offer a free pickup service (so renovators can reduce disposal costs and receive tax deductions). At our reuse center just outside Northeast, DC, the items are offered to the public at below-retail prices and provided free to local nonprofits and neighbors in need.

Top: This summer we were especially lucky to receive dozens of almost-new window air conditioners from an apartment complex renovation. It allowed us to serve many neighbors with health issues, like this woman:

“I just had open-heart surgery, and the doctors told me to stay in the air conditioning. I was taking the bus to the cooling shelter every day, but I still had to come home at night and sweat in my bed. I was also worried about my gas stove because half the burners went out and that’s dangerous. I was so grateful when you gave me those two ACs and a nice clean stove. I feel like I am back to life again, not just surviving.”
—84 year old Home Essentials recipient

Bottom: Volunteers used our tools to assemble a playground at DC Prep.

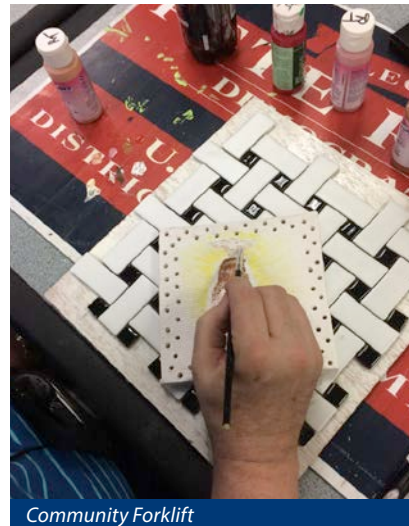
Turning the construction waste stream into a resource stream

By keeping good materials out of the landfill, we were able to support 40 green workers in 2017 and make repairs affordable for thousands of moderate-income homeowners, small business owners, artisans, and historic restoration projects. In addition to the charitable benefit of our reuse center, we used store proceeds to support several programs:

Home Essentials

We helped 157 families, seniors, and people with disabilities through our Home Essentials program, providing almost \$39,000 in store credit so they could shop for free at our warehouse. Gently-used appliances were the most common request we fulfilled.

Members Give Back



Left: PLAN International's Global Women in Management group after an August tour of our warehouse. **Right:** "My gratitude goes to Community Forklift because they've made so many things happen and made a difference in the lives of these Veterans." —Kasse Andrews-Weller

Community Building Blocks

In 2017, our Community Building Blocks program distributed over \$25,000 in free building materials to 82 local nonprofits. Some of the largest grants went to groups like Yachad's Home Repair Program and Christmas in April of Prince George's County, to keep low-income families and seniors safe and healthy in their homes.

Several charities used the free materials to improve their own operations. For example, the Youth Entrepreneur Institute picked out supplies to convert an old house on Bladensburg Road into a training and recreation center for teens. We were thrilled when Voice of America did in a news segment about it!

To make it easy for small volunteer-led projects to get supplies too, we keep the application process simple. For example, when a school in Northeast, DC planned playground-building day, a promised tool donation fell through at the last minute. They called us and we quickly got them a ladder, hammers, and other tools so their volunteers could still get the job done.

Sometimes, even the smallest grants had a big impact. Kasse Andrews-Weller, a volunteer at the Veterans Administration DC Medical Center, picked out tile scraps and frames to use in her art therapy classes. Michael Green, a disabled US Army veteran, was named October Artist of the Month by The Capitol Hill Art League, and plans are in the works for a 2018 art show at the Forklift.

Education & Workforce Development

We worked with partners like Project Empowerment to create opportunities for folks with barriers to employment, and give a fresh start to returning citizens.

Our Outreach & Education team produced 22 free public workshops on basic home repair and creative reuse, and our community festivals on green living were a big hit—1,500 local residents showed up to our spring Garden Party.

We also hosted tours for all ages, teaching everyone from preschoolers and scout groups to grad students and guests of the State Department about social entrepreneurship, waste reduction, and the economics of reuse.

Making donations go further

We also have some good news to share! This year Community Forklift was selected to take part in the Maryland Community Investment Tax Credit Program. This program rewards Maryland taxpayers that donate to nonprofits that serve local communities. So, if you (or your client) makes a donation to Community Forklift of \$500 or more, you can earn a Maryland tax credit of 50% of the value of your donation. This tax credit is in addition to Federal and State charitable tax deductions. For more information, please visit www.CommunityForklift.org/Donate or call us at 301-985-5180.

Donohoe Construction Corporation

JDRF Real Estate Games

Donohoe joined the DC real estate community in June at the 28th annual JDRF Real Estate Games. The field day-like charity event was held at American University to support the Greater Chesapeake & Potomac Chapter of the Juvenile Diabetes Research Fund.

Rebuilding Together

Donohoe participated in Rebuilding Together's National Rebuilding Day on Saturday, April 29th. Team Donohoe supported and coordinated a home renovation effort in Rockville, MD where 65 employees helped with painting, clean up, electrical work, yardwork and other small repairs. Donohoe additionally engaged their subcontractors to donate time and supplies to make larger repairs to the home on several work days in advance of National Rebuilding Day.

Members Give Back



Donohoe Construction Corporation



Donohoe Construction Corporation



Donohoe Construction Corporation

Food & Friends

Donohoe organized a day of service with Food & Friends to support their Slice of Life pie sales fundraiser. On Saturday, November 18th Team Donohoe joined F&F at a pie packing event to get the 8,600+ pies sold in their fundraiser out the door. Over 100 Team Donohoe volunteers gathered in three shifts to sort and pack all of the pies for delivery across the DC area.

Food for Others

Donohoe organized a food drive around the Thanksgiving holiday to coincide its distribution of complimentary Thanksgiving turkeys to each Donohoe employee. This year Team Donohoe supported Food for Others in Northern Virginia by providing them with turkeys, non-perishable goods and a monetary donation.

Toys for Tots

Donohoe collected new, unwrapped toys for children at 12 locations around the DC area and donated them to Toys for Tots during the month of December.

Hearts & Homes for Youth

In conjunction with Donohoe's distribution of complimentary holiday hams to Donohoe employees, Donohoe arranged a drive to support the needs of Hearts & Homes for Youth. This year Team Donohoe collected socks, underwear, winter wear, cash and gift cards for the youth in their homes in Montgomery County.

Help for Houston

We set out with a goal to raise \$1,000 to support the efforts of the American Red Cross in the Houston area. Donohoe employees and partners upped the ante by raising a whopping \$7,400, which the Company has decided to fully match, dollar-for-dollar sending a total of nearly \$15,000.

Relief for Puerto Rico

Donohoe provided donations of specific urgently needed items for victims in Puerto Rico that ranged from non-perishable food, tools, medicine, and toiletries.

About Donohoe Construction Company

Family-owned and operated, Donohoe Construction Company is one of the leading general contractors exclusively serving the Washington, DC Metro area. Donohoe's diverse construction expertise includes multi-family residential, office, hospitality, senior living, mixed-use, interiors, parking garages, and higher-education projects. Continued growth and success reflects Donohoe Construction's steadfast commitment to superior service and uncompromised integrity. For more information, please visit www.donohoe.com/construction or on Twitter @DonohoeTweets.

Forrester Construction

Forrester's Community Involvement Committee is led by Team Members dedicated to helping to build a stronger, more vibrant community. Our mission is to support, maintain and create programs in the DC Metro area that foster interest in the construction industry, empower tomorrow's leaders and support the health and wellness of under-resourced residents.

2017 was another successful year for the Community Involvement Committee and our dedicated Team Members. Here are some highlights:

Interfaith Works Wilkins Avenue Women's Center

Twice in 2017, our team prepared and served a homemade meal to residents at Interfaith Works Wilkins Avenue Women's Center in Rockville. Their mission is to provide under resourced residents of Montgomery County, MD with clothing and household essentials so more of their resources can go to critical needs like rent, utilities, and medical bills.

Members Give Back



Forrester Construction



Forrester Construction



Forrester Construction



Forrester Construction

This activity is a great way for us to connect with neighbors in need and provide the shelter with support in meeting their client's basic needs. When the shelter moved into its new facility this year, Forrester team members also donated linens and other supplies to the new building. Prior to the opening of the new facility, Forrester helped beautify and make minor improvements and repairs to the women's shelter over the past few years.

In recognition of Forrester's ongoing commitment to Interfaith Works the organization named Forrester its Local Corporate Champion of the Year in early 2017.

Interfaith Works Clothing Center

Each year, Forrester holds a professional clothing drive to benefit A Wider Circle, a Montgomery County nonprofit focused on ending poverty through empowerment. When donated items are too casual for their needs, the remaining clothing is donated to Interfaith Works Clothing Center.

A Wider Circle

Forrester supports A Wider Circle in a range of ways throughout the year.

Our team collects new and gently used clothing, shoes, belts and briefcases for their Professional Development Center to aid in their efforts to help adults preparing for employment look and feel their best. Several members of our team also volunteer to participate in mock interviews for the Center's workforce boot camp program, helping adults re-entering the workforce hone their professional skills and practice interviewing.

For Forrester's Annual Community Involvement Day, team members spent a recent Saturday at A Wider Circle performing light construction, painting, and sorting donations for our annual Community Involvement Day. Through our efforts, the organization gained new meeting space for their team and a more welcoming volunteer conference room.

New Futures Foundation

New Futures works to empower communities through educational enhancement courses, GED subsidization, and cultural outreach programs for youth, adults, and their families. Forrester hosted two New Futures Scholars studying construction management at Montgomery College for a "careers in construction" roundtable discussion and provided job shadowing opportunities so they could experience our industry in action. We also contributed to and attended their fundraising gala.

EL Haynes Public Charter School

Forrester has supported EL Haynes Public Charter School's mission for several years. Currently, the firm awards one EL Haynes graduating senior a scholarship each year as they pursue STEM fields in college.

Toys for Tots

Our second time participating in the Toys for Tots drive is off to a fantastic start. Forrester's main office and jobsites are competing to see who will collect the most donations. Last year, was a

Members Give Back

tremendous success. Donations included a bike and a four-foot-tall Darth Vader! We hope to collect even more toys this year.

Wreaths Across America

Forrester has joined Wreaths Across America for the past four years, lending support for their work honoring all of the service men and women interred at Arlington National Cemetery. This shows Forrester's support for those who have served, and demonstrates our pride in being the builder of the Millennium memorial complex. Our team participates in both the wreath laying and removal.

Martha's Table

To help Martha's Table provide food for homeless District residents, Forrester's team made and wrapped hundreds of sandwiches at our annual company BBQ. At Forrester, part of having fun means doing good, too!

The Race for Hope

Each May, Forrester sponsors runners and walkers in the Annual Race for Hope 5K, a fundraiser to benefit the National Brain Tumor Society. Team Members and their families walked and ran for a cure, supported survivors of brain tumors, and raised funds for research.

Community of Hope

As part of Forrester's ongoing relationship with Community of Hope, Team Members have hosted birthday parties for children living in their Girard Street facility for the past five years. This year, Forrester Team Members also collected and filled backpacks to help COH ensure that children in the District had the school supplies they needed to start the school year off right. Our interns also volunteered as part of their Back to School Bash, a neighborhood festival where the donated backpacks were distributed.

ACE Mentoring Program

For the past five years, Forrester has been part of the ACE Mentoring program. Our team has sponsored chapters at both McKinley Tech and the IDEA Public Charter School, where we engaged high school students in hands-on activities designed to spark an interest in construction, engineering and architecture. Students benefit from close relationships with mentors, field trips, engaging activities and opportunities to learn more about AEC careers. With their mentor's guidance, students also design and present a cumulating project showcasing what they have learned to the broader ACE organization and industry professionals. This year, we are helping support a chapter at Georgetown Visitation, an all-girls school, with the goal of encouraging more young women to enter into construction careers.

CANstruction

Forrester Team Members participated in AGC of DC's YCF 2017 CANstruction entry. CANstruction is a yearly design competition that raises awareness of hunger and provides local food pantries with donations of canned goods. This year's cans were donated to the National Capital Food Bank.



GHT Limited

This October, in acknowledgement of breast cancer awareness month, we hosted a passionately pink day on October 19th through Susan G. Komen where we gave employees pink goody bags and pink cupcakes. We encouraged our employees to wear pink and donate to our Susan G. Komen corporate team. We had a great turn out and raised \$635 throughout the day.

GHT provides innovative mechanical, electrical, and plumbing (MEP) engineering solutions for the built environment. Our approach integrates proven techniques with the latest technologies and sustainable design practices. In addition to MEP design and commissioning for base building systems and interiors, GHT offers operations and energy services that enhance building performance and real estate advisory services that inform investment decisions. For more than 50 years, GHT has helped improve efficiency and value for commercial, institutional, and government real estate in the Washington, DC region.

Gilbane Building Company

This year, Gilbane and its employees have dedicated their time, money, and resources to making the region a better place to live and work. From running 5Ks to building community assets to mentoring future engineers, Gilbane has striven to put our core values to work and make a difference in the communities where we work, live, learn, and play. A huge part of that is our involvement with the ACE DC Mentor program throughout the year. In 2017, Gilbane's mentors helped to develop high school students' passions in STEM careers and gave them the tools to pursue those passions after they graduate.

In addition to supporting STEM programs throughout the region, Gilbane works with industry organizations and local leaders to help improve our local community. Our project teams find ways to impact their communities, such as working with the kids at Marie Reed Elementary school for their career

Members Give Back



Gilbane Building Company



Gilbane Building Company



Gilbane Building Company



Gilbane Building Company

day. We've found that even small donations can make a big impact. Our Baltimore office held a chili cook-off to collect donations for the hurricane relief efforts. Furthermore, Gilbane has been actively involved with the Department of Small and Local Business Development (DSLBD) to assist Certified Business Enterprises (CBE) grow their companies and gain access to greater contracting opportunities. In Richmond, Gilbane supports the local community by hosting an annual Restaurant Walk to support The Doorways (previously Hospital Hospitality House) and has raised more than \$215,000 over the past ten years! Our annual golf tournament, held in Maryland, raised over \$15,000 for the Ulman Cancer Fund for Young Adults (UCF). Our partnership with UCF continues to evolve. Gilbane is working with UCF during the holiday season to sponsor a cancer patient for Christmas 2017. The golf tournament also raised over \$15,000 for There Goes My Hero, \$10,000 for the ACE Mentor Program, and over \$5,000 for Educare. Other yearly events include DCBIA Community Improvement Day, Notes of the New, Rebuilding Together, Christmas in April, Charity Casino Night, CANstruction, John's Hopkins University Corporate FunRun, donations to Sarah's House, and the JDRF Real Estate Games. Overall, Gilbane raised over \$100,000 for our communities this year all through employee-led efforts!

About Gilbane Building Company

Gilbane Building Company is a 144-year-old, family-run, full-service construction operation providing clients with a

variety of services in markets such as education, commercial, and healthcare. Our mid-Atlantic headquarters is located in Arlington, VA, with additional offices in Baltimore, MD, Philadelphia, PA, and Richmond, VA. While our business involves strengthening the communities around us through infrastructure, our goal is to strengthen those same communities through volunteerism, corporate giving and meaningful partnerships. Our team is dedicated to contributing to the overall quality of life in all the communities we call home through active involvement in many charitable, educational, and local organizations. We encourage and support every single team member to care and get involved, with the ultimate goal of stronger communities throughout the world.

HITT Contracting, Inc

HITT Contracting, Inc, a national general contractor based in Falls Church, VA, HITT counts Community Contribution as one of the five pillars of our Corporate Responsibility program, providing opportunities throughout the year for our team members to give back.

In 2017 we maintained many of our annual initiatives, including blood drives, CANstruction, and providing support for Shelter House. This year we again held our intern day of service at their facilities, organized suit drives for resident in need, and holiday gift giving for the children there. We also added new efforts to our outreach as well.

Members Give Back

Looking to the Future

Our team recognizes the importance of engaging and attracting new talent to the construction industry. Early in 2017 HITT participated in Phelps Architecture, Construction, and Engineering High School shadow day for the students. Interested seniors were partnered with HITT superintendents to shadow them on the jobsite, presenting an opportunity for real life jobsite experience and candid answers to a wide range of questions. Our superintendents enjoyed the opportunity to share their knowledge. We look forward to strengthening our relationship with Phelps ACE High School in the years to come.

Later in the year, HITT members volunteered with Higher Achievement, a non-profit providing afterschool mentoring and summer academy for middle schoolers in the Washington, DC area. Our team helped the scholars practice their poems the weekend before their Love Out Loud poetry performance at the Lansburgh stage. Over the summer, HITT volunteers helped Higher Achievement put on their Olympics of the Mind event, a friendly competition focused on academics and teamwork.

HITT also participated in Big Build, a hands-on educational event held at the National Building Museum. Construction firms and others from across the industry came together to showcase how fun and interesting building can be for aspiring builders in elementary school and younger. Our station, Stack HITT Up, included technical drawings that children could follow and construct using building blocks. The kids also got creative, stretching their imaginations to build structures of their own!

Trees for Keys

In 2017, HITT launched our Trees for Keys initiative within our Multifamily sector, a program that aligns with the Environmental Sustainability pillar of our Corporate Responsibility program. Aiming to plant a tree for every apartment unit the team has completed from 2010 on, the initiative was kicked off on Earth Day. A donation was made to the National Forest Foundation to plant 1,219 trees with another 87 planted by our volunteers and Casey Trees along Suitland Parkway.

Hurricane Relief

The month of August saw Hurricane Harvey, Irma, and Maria impact the United States and Puerto Rico. Some of our team members at our Trademark HITT office in Houston were significantly impacted by Harvey. Our company rallied to help and had 151 people donate from their paychecks to colleagues in need. Those donations, along with owner support, raised a total of \$71,190 for our team to help rebuild.

Additionally, in Northern Virginia, HITT partnered with Protiviti, Freddie Mac, and other local firms to provide hunger relief for storm victims. Together, our volunteers packed 235,000 meals in one afternoon, with 155,000 of the meals and 3,000 gallons of water going to Puerto Rico, and the remaining meals going to impacted areas of Houston and Florida. Over 60 HITT members volunteered their time and energy for this event.



HITT Contracting, Inc



HITT Contracting, Inc



HITT Contracting, Inc



HITT Contracting, Inc

Members Give Back



Insurance Associates



Power Design Inc.



Insurance Associates

Insurance Associates

This year our agency started a partnership with Nourish Now in Rockville, MD to help create meals for families and children in need. Nourish Now collects donations of surplus food from local grocery stores and caterers with the plan of redistributing the food to over 600 local families each month. Several times this year we sent employees to their service center to process the food donations and divide up prepared food into serving sizes for families.

In September we held a donation drive for Hurricane Harvey. Our employees graciously contributed items to those directly impacted by the Hurricane. We collected diapers, hygiene and paper products and sent a car-full of these types of products down to The Capital Area Food Bank in DC. The Capital Area Food Bank then put all our donations on a truck to go down to Texas to help those in need.

About Insurance Associates

Insurance Associates is a locally-based firm that has been advising and protecting clients for over 60 years. We help them secure the right insurance, bonds, and employee benefits to meet their organization's goals. We work with clients in all industries for their group benefit packages, but our expertise is in the construction industry for commercial insurance and surety bonding. Our clients stay with us because we work hard to earn their trust and confidence and they value the many extra services we routinely provide.

For more information about our passion and the rest of our team at Insurance Associates, please visit us at www.insassoc.com.

com, follow us on LinkedIn and like us on Facebook. We look forward to meeting you!

PerLectric, Inc.

PerLectric made several financial contributions to charitable organizations during 2017, including Junior Achievement of Washington, Team River Runner (Wounded Warriors), and Youth Works Inc.

Power Design Inc.

Hope for the Warriors

Power Design was a \$5,000 sponsor of the Faces of Hope Gala in Arlington, VA. This partnership directly benefitted the organization's mission to provide comprehensive support programs for service members, veterans and military families across the country.

Emerging Scholars

Power Design contributed \$10,000 to the Emerging Scholars at their Anniversary Gala in Washington, DC. Funds raised at this event allow for children facing economic challenges to attend academic, social, cultural and life-skills programs.

Washington Jesuit Academy

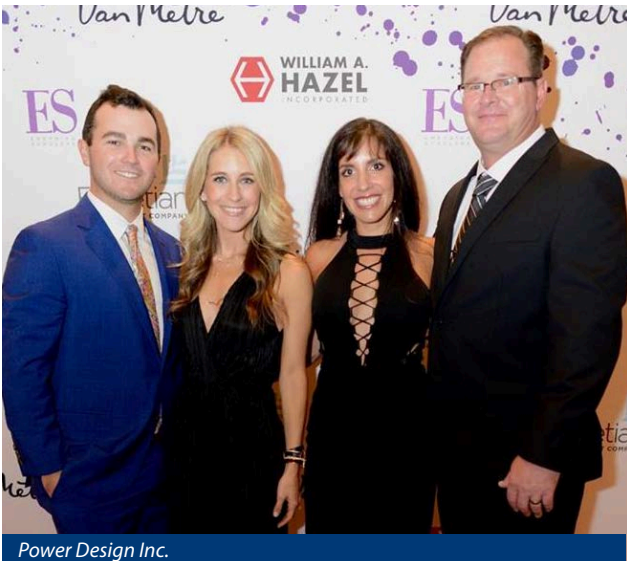
Power Design donated \$5,000 to support the WJA, a tuition-free, independent school making a true impact on the lives of Washington, DC's most deserving young men.

About Power Design Inc.

With more than 200 active projects, a 133,000-square-foot national campus, a 100,000-square-foot distribution center, and accumulative revenue exceeding \$2 billion, Power Design is one of the leading electrical contractors in the United States. With a 16,000-square-foot training center dedicated to core training and hands-on simulation experiences to provide real-life applications, Power Design is at the forefront of innovative training practices and techniques.

Since founded in 1989, Power Design has operated as a family-run business built on an unbending foundation of

Members Give Back



Power Design Inc.

quality service and loyalty to our employees and customers. Our commitment to customer service has enabled us to partner with the top 100 general contractors as ranked by *Engineering News-Record* (ENR). For more information visit: www.powerdesigninc.us or call 727.210.0492.

Rippeteau Architects, PC

Darrel Rippeteau, AIA, established a permanent fund for the Stanley Hallet Sketchbook Award with a \$20,000 cash gift to the Catholic University of America School of Architecture in 2017. The gift formalizes an awards program which Mr. Rippeteau started in 2005. At first, Mr. Rippeteau and two other judges in the DC arts community convened an annual competition among CUA Architecture students. The students turned in their travel sketchbooks for comparison, with the winners receiving \$500 to \$1,000 from Mr. Rippeteau.

Stanley Hallet, Dean Emeritus, managed the School's travel program and created the format and content scheme for student observations and drawing of historical and architectural sites. Dean Hallet's format includes analytical drawing to anchor an understanding of architectural and structural facts to the perspective views of places. Rippeteau's grant is expected to generate further funding for a permanent Stanley I. Hallet Sketchbook Award.

Scaffold Resource, LLC

The Scaffold Resource family is a big believer of giving back and helping in the community. We are proud of our many contributions for 2017.

St. Paul's Parish Homeless Ministry

Owner of Scaffold Resource, Charlie Weiss and Sales/Project Manager George Vincent donate their time on Saturday mornings and deliver food to the homeless throughout the DC Metro Area.



Rippeteau Architects, PC



Rippeteau Architects, PC

Center for Children

Center for Children hosted a "Poker Run" Fundraiser, in which Scaffold Resource was an event sponsor. The Center for Children, Inc is a private, non-profit organization that provides comprehensive mental health services to children and their families. The Center is dedicated to the promotion of positive mental health for children, youth and families, and the prevention/treatment of child abuse in Southern Maryland. Through therapy, education and advocacy, they provide hope and healing.

Talisman Therapeutic Riding

Scaffold Resource was an event sponsor and also attended their 6th Annual Derby Day, A Benefit for Talisman Therapeutic Riding Facility in Grasonville, MD. Located on a remarkable farm estate on the Chesapeake Bay, within 15 minutes of the Bay Bridge, the farm encompasses 1,000 acres of pastures, waterfront, tidal wetlands and woods. Talisman creates a holistic wellness environment using the great outdoors and wildlife. Their mission is to serve many who can benefit by the healing nature of horses and the guidance of professional therapists and instructors in a peaceful farm setting.

Rappel for Kidney Health

George Vincent, Sales/Project Manager, was contacted by the National Kidney Foundation of Maryland to provide a platform for use during their "Rappel for Kidney Health" fundraiser at the Hyatt Regency in Baltimore.

Members Give Back



Scaffold Resource, LLC

SAIAEF

Scaffold & Access Industry Association Education Foundation Sponsor.

Charm City Cross Races, Druid Hill Park, Baltimore, MD

Donated Scaffold Material and Labor Install for their races.

Johns Hopkins- "Believe in Tomorrow House" Dinner

Scaffold Resource Employees Elizabeth Justis, Chair of ASA Baltimore Young Leaders, and Tara Minner, Committee member, participated in the Johns Hopkins "Believe in Tomorrow" Dinner. It was such a great experience prepping, cooking and serving dinner to the families at Johns Hopkins Believe in Tomorrow Children's House. The ASA Bylders committee all worked together to make this happen. They feasted on a fall harvest themed dinner including turkey, ham, stuffing, green bean casserole, carrots, potatoes, pies and other desserts.

October Donations

Donations were made to Structural Preservation for the Hurricane Relief and to the "Boo Bash" event hosted by the BHGH "Boys Hope Girls Hope Baltimore."

Sponsorship and Purchased a Table for the Spring Dell Center Fundraiser "Celebrating 50 Years"

Spring Dell Center, Inc. was created in 1967 to assist individuals with developmental disabilities. Located in Charles County, Spring Dell has made efforts to serve the segment of the community that requires more specialized and intensive services. The agency developed an expertise in using an interdisciplinary team approach and in developmental and behavioral programming.



Scaffold Resource, LLC



Scaffold Resource, LLC

The SK&A Group

In recognition of SK&A's philanthropic efforts, in November the company received Corporate Philanthropy awards from the *Washington Business Journal* for the volume of volunteer hours that their staff donated to charitable organizations as well as the company's cash contributions over the previous year. A small business, the structural engineering firm has strived to cultivate a culture of "giving back" over its 57-year history by supporting a diverse range of organizations and events, both locally and beyond. Examples of the firm's 2017 charitable activities include:

American Odyssey Relay Run Adventure

In April, the SK&A "Legs of Steel" team participated in the annual 200-mile relay race, from Gettysburg, PA to Washington, DC. The race is split into 36 legs with various distances and ran by teams of up to 12 runners. A portion of the proceeds from the relay were donated to charities, including Hope Connections for Cancer Support and Team Red, White & Blue.

SEA-MW Rebuilding Together, Alexandria, VA

SK&A volunteers participated in SEA-MW's 2017 Rebuilding Together event, held this past spring. Team members assisted



Scaffold Resource, LLC

Members Give Back



The SK&A Group



The SK&A Group

a homeowner in Alexandria, VA with various repairs and improvements, including plumbing, and the replacement of doors, windows, stairs and fencing.

Race for Hope

In May, SK&A staff members participated alongside other friends and family in “Team Steel” for the 20th annual 5K Race for Hope. Over \$4,000 was raised by the team to benefit Accelerate Brain Cancer Cure (ABC2) and the National Brain Tumor Society (NBTS).

JDRF Real Estate Games

For the firm’s 11th consecutive year, SK&A competed in the JDRF Real Estate Games, an Olympic-style sporting event that raises money for Type 1 (juvenile) diabetes research. SK&A’s team of 21 competitors participated in a variety of sporting events, including men’s tennis, chair hockey, foosball, table tennis, the raft race, corn hole, men’s 4x100 relay, volleyball, the big trike derby, big ball, the obstacle course, “puzzle me this,” “minute to win it,” “heads of office,” and the three-point contest.

SK&A’s Beard-a-Thon

Thought up over happy hour one evening in the fall of 2016, several SK&A employees kicked off this internal fundraiser/competition to see who could grow the thickest and quickest beards within one month. This past November 2017 marked

the 2nd year of the popular event, with ten fuzzy, bearded participants inspiring their fellow co-workers to donate over \$1,500, which was subsequently distributed equally to three charity organizations: National Brain Tumor Society, Comfort Cases and One America Appeal for Hurricane Relief.

CANstruction DC, Washington Architectural Foundation

SK&A participated for its 4th year in the annual food-drive competition, CANstruction DC. Organized by the Washington Architectural Foundation and the Capital Area Food Bank, the fundraising competition gathers thousands of canned food donations while raising awareness about hunger in the DC area. For this year’s “CANnect with Nature” theme, the SK&A team carried an almost six-foot-tall toucan, Toco, using over 1,435 cans (varying from chick peas, diced tomatoes, black eyed peas, tuna fish, and black beans) as well as other food items.

And more...

Additional charitable organizations and events that SK&A supported in 2017 include: Habitat for Humanity’s Women Build, Phelps ACE High School Mentorship Day, Penn State’s AE Senior Thesis Competition, the American Architectural Foundation, the American Institute of Architects, Commercial Real Estate Women, the DC Preservation League, First Potomac’s Multiple Sclerosis Golf Classic, the Gabriel Homes Golf Tournament, the Georgetown Lombardi Cancer Center, Higher Achievement DC Metro, Hope Connections for Cancer Support, the International Concrete Repair Institute, Jubilee Justice Housing, the March of Dimes, Mission First Housing Group, Montgomery County Interfaith, the National Building Museum, the Potomac Lions Club, Pythagoras Lodge, Reading Partners, So Others Might Eat, the Special Olympics, St. Jude’s Hospital, Washington Building Congress, the Washington Nationals Dream Foundation and care packages for our U.S. Veterans.

About The SK&A Group

Founded in 1960, The SK&A Group provides structural engineering as well as structural testing and inspection services to public and private sector clients within the building industry. Comprised of three separate firms, Smislova, Kehnemui & Associates, PA (SK&A MD), SK&A Structural Engineers, PLLC (SK&A DC), and Eastern Testing & Inspection Corporation (ETI), The SK&A Group seamlessly provides clients with specialized expertise and pooled resources within a range of structural related consulting services — from structural analysis, design, repair, and restoration to testing and inspection.

Washington Gas

Since 1848, when Congress first authorized its charter, Washington Gas has given back and played a positive role in the communities it serves through philanthropic support and empowering its employees to lead the way through volunteerism.

In 2013, Washington Gas was rebranded as WGL to better reflect the diverse set of clean energy solutions we offer across our diverse portfolio, including natural gas, electricity,

Members Give Back

green power, distributed generation and efficiency services. WGL's calling is to make energy easy for our customers—consumers, businesses, government organizations and campuses—and to deliver the right answer for their unique energy requirements. The company provides these solutions through the four businesses that comprise WGL: Washington Gas, WGL Energy, WGL Midstream and Hampshire Gas.

The management of energy infrastructure and the safe, reliable delivery of energy services is a core expertise across WGL's businesses and a key element of the company's brand. Another consistent brand attribute across WGL is the company's long-standing commitment to community service.

WGL's community and philanthropic program includes a focus on health, education and environmental initiatives in the communities we serve. Within each area, the company supports programs for disadvantaged youth, the elderly, and people with disabilities. In 2017, nearly 700 WGL employees dedicated more than 12,000 community service hours and completed 55 volunteer projects.

Our signature philanthropic program, the Washington Area Fuel Fund (WAFF), has provided funds for all types of fuel, including natural gas, electric, oil, to heat the homes of families in need for over 30 years. WAFF is administered by The Salvation Army and WGL pays all of the administrative funds to ensure that every dollar donated goes to help our neighbors stay warm in the cold winter months. In 2017, WAFF disbursed more than \$773,000 to help more than 6,000 residents. Since its launch in 1983, WAFF has provided more than \$26 million and has helped more than 281,000 people.

WGL has maintained a strong partnership with the Leukemia & Lymphoma Society (LLS). Employees, friends and families raised \$153,000 for the LLS Light the Night Walk and campaign. The company's total donation comes from a combination of efforts, including: a corporate golf tournament that drew 127 participants and raised \$116,000; employee fundraising that garnered \$22,000, and corporate funding of \$15,000. In addition, 50 WGL team members participated in the annual 2.5-mile Light the Night Walk that served as the culmination of the LLS National Capital area 2017 campaign, along with being named the Top Corporate Fundraiser for the region. We are the first corporate sponsor in the region to surpass \$1 million in total contributions for LLS since 2000.

Last November, WGL hosted its fifth annual corporate-wide Day of Weatherization. With more than 200 volunteers, this continues to be the company's largest community endeavor to date. The project includes weatherizing the homes of elderly and low-income residents throughout the company's entire natural gas service territory. Volunteers worked in teams of



Washington Gas

three to six to weatherize more than 150 homes in the District of Columbia, Maryland, Virginia and West Virginia. The teams caulked leaky crevices around doors and windows; sealed drafty windows in clear plastic; replaced inefficient aerators; changed gas furnace filters, and installed insulation strips under exterior doors. In addition to these efforts, for the third consecutive year, WGL partnered with GRID Alternatives Mid-Atlantic, a DC-based non-profit organization delivering solar power to underserved communities, to support the installation of a roof top solar system on a home in Northwest, DC. The Day of Weatherization was in partnership with the District of Columbia Office on Aging, GRID Alternatives, Habitat for Humanity Winchester-Frederick-Clarke Counties, Montgomery County, Aging and Disability Services, NBC4, Northern Virginia Family Services (NVFS), Slanesville Ruritan Club, Teamsters Local 96, United Communities Against Poverty (UCAP) and Winchester Department of Social Services.

"WGL is proud of our ongoing commitment to support the communities we serve, and help people in the national capital region to take proactive energy saving steps as winter approaches," said Terry D. McCallister, Chairman and CEO of WGL Holdings, Inc., and Washington Gas. "We appreciate the dedication of our highly-valued employees who continue to give back to the communities we've been honored to serve for more than 169 years."

The company's involvement in community service reflects a passion for making WGL a new kind of energy company: answer-oriented, responsive and a stalwart corporate citizen, today and in the future. **B**

Member Projects

Kelly Generator & Equipment, Inc., the Mid Atlantic distributor of Generac Power Systems, partnered with **Ennis Electric**, an industry leading electrical contractor in the Washington, DC region, to supply eight Generac MG400kW natural gas generators to the **Museum of the Bible**. The 430,000-square-foot Museum of the Bible is an innovative, global, educational institution that aims to provide an unparalleled experience by creating one of the world's most technological advanced museums.

The installation of the generators called for some specific on-site conditions. The MG400kW natural gas units were able to meet a smaller footprint of enclosed space on the roof of the building by taking advantage of the room height available and mounting four units on a steel structure over the other four units. Four of the 400kW generators provide life safety application requirements and the remaining generators backup climate control systems to preserve the museum's priceless Biblical relics.

Donohoe Construction Company recently broke ground on **Brightview Bethesda**, a 122,225-square-foot, high-rise retirement community off of Rugby Avenue in Bethesda, MD. Developed by The Shelter Group, the eight-story retirement community will include a mix of 113 units for independent living, assisted living, and memory care. **Hord Coplan Macht** has designed the project to achieve LEED Gold with several amenity spaces that include multiple dining areas and activity rooms. The new community will also feature a roof top deck with views of DC. The project is scheduled to reach substantial completion in the spring of 2019.

Donohoe Construction Company also hosted a "Topping Out" celebration in December for **Gallery Bethesda II**, a luxury high-rise apartment building located at 4850 Rugby Avenue in downtown Bethesda, MD. Developed by **Donohoe Development Company**, Phase 2 will bring to Woodmont Triangle a 240,000-square-foot, 17-story luxury tower with 219 residential units and three levels of below-grade park-

Museum of the Bible, Washington, DC



Brightview Bethesda, Bethesda, MD



Gallery Bethesda II, Bethesda, MD



Member Projects



Keeping the legal side
of your industry
in perspective
while you soar
to new heights

BUILDING SOLUTIONS™
WATT TIEDER
WATT, TIEDER, HOFFAR & FITZGERALD, L.L.P.
www.watttieder.com

BUILT to SUCCEED in   



COHEN SEGLIAS
PALLAS GREENHALL & FURMAN PC
Attorneys at Law

1828 L Street, NW
Suite 705
Washington, DC 20036
202.466.4110

www.cohenseglias.com
www.constructionlawsignal.com
www.fedconblog.com
www.investigationslawblog.com

PENNSYLVANIA NEW JERSEY NEW YORK DELAWARE MARYLAND WASHINGTON, DC KENTUCKY

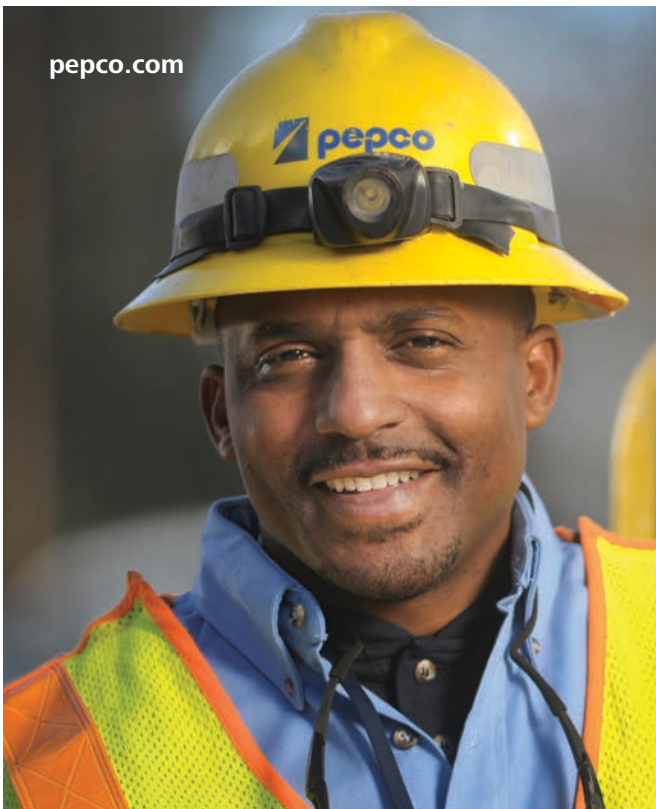


RESULTS FIRST™

P&A
Peckar & Abramson, P.C.

COUNSEL TO THE CONSTRUCTION INDUSTRY
2055 L STREET, N.W.
WASHINGTON, D.C. 20036
202.293.8815

NEW YORK, NY • RIVER EDGE, NJ • MIAMI, FL • WASHINGTON, D.C. • LOS ANGELES, CA
OAKLAND, CA • CHICAGO, IL • AUSTIN, TX • DALLAS, TX • HOUSTON, TX • DEVON, PA
WWW.PECKLAW.COM



POWERING BUSINESSES FOR COMMUNITY GROWTH.

We're committed to providing safe, reliable and affordable energy that local businesses need to help our communities grow.



An Exelon Company

© Pepco, 2017

Member Projects

ing. Retail space will occupy 12,425 square feet on the ground floor.

Designed by **WDG Architecture** to achieve LEED Gold, Gallery Bethesda II's amenities will include a rooftop pool, outdoor kitchen, indoor sky lounge, and a sports-club style fitness center. The apartment building will share the unique public pedestrian plaza designed for the project with its neighbor, Gallery Bethesda apartments. Delivery is scheduled for Fall 2018.

The **Pentagon Memorial Fund** recently selected **DAVIS Construction** as the general contractor for the **9/11 Pentagon Memorial Visitor Education Center (VEC)** in Arlington, VA. The existing memorial, which opened in 2008, pays tribute to the 184 lives that were lost on September 11, 2001 when American Airlines Flight 77 was hijacked and crashed into the Pentagon. The VEC will provide historical information and necessary education about the tragic events of 9/11 for generations to come. Exhibits, educational programs, guided tours, and reflection space are planned for the Center.

"There are so many young people who were not around then or aren't old enough to remember the events of that day. It's our job to educate them so that no one ever forgets. With the Pentagon Memorial Fund's leadership, the VEC will be a tremendous aid in providing that education," said Jim Davis, President + CEO at DAVIS. The Pentagon Memorial Fund leads efforts to raise awareness and funding for the project.

The proposed VEC will be approximately 110,000 square feet and located adjacent to the Memorial, within Flight 77's path. **Fentress Architects** is responsible for the design of the project. Construction will begin in mid-2019.

Donohoe Construction Company hosted another "Topping Out" celebration in December for The Lindley, an 11-story, luxury apartment building at Chevy Chase Lake. Developed by EYA and **The Housing Opportunities Commission of Montgomery County**, the 227,000-square-foot building will consist of 200 residential units and three levels of below grade parking. The Architect, **Design Collective**,



**SITE PREPARATION
DEMOLITION
EXCAVATION**



2851 V Street NE - Washington DC, 20018
202-882-2600 - FAX 202-882-5330



OWINGS, MD
410.257.5225

COAL CENTER, PA
800.677.3815

WWW.KGE.COM

RELY ON OUR EXPERTISE



YOUR PREMIUM GENERATOR SUPPLIER

Generator & Transfer Switch Sales, Planned Maintenance Contracts, Generator Rentals, Replacement Parts, Load Banks, Service, Training.

Kelly Generator & Equipment, Inc. is the Mid Atlantic distributor for Generac Industrial Power since 1992. We are a coordinated rapid response organization known for offering the proven reliability of a Generac Industrial Power solution, backed by the quality of our service and reliability of our generators. Kelly Generator & Equipment, Inc. strives to provide our customers with quick and professional solutions to their electrical power needs. KG&E operates on three solid principals: Ensure optimum quality in every product sold; professional, honest, straight-forward relationships with our customers; and superior service for the life of our products.

Member Projects

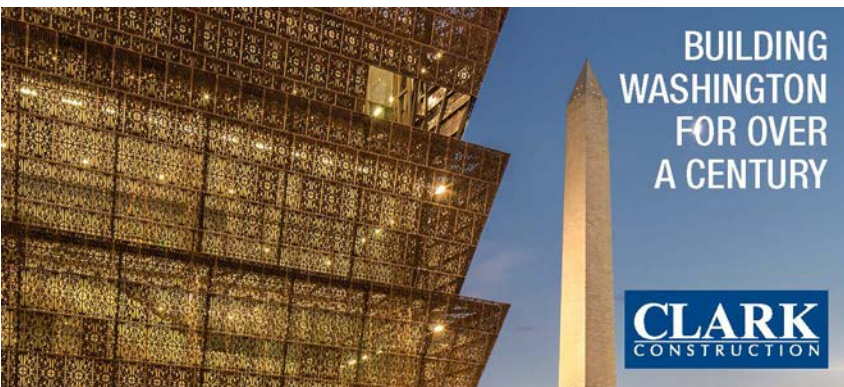
The Lindley team



The Lindley, Chevy Chase, MD



incorporated an abundance of amenity spaces including a living room, a club room, a conference room, a coffee area, a fitness center with a yoga room, a library, and a children's play area. The resort-inspired rooftop space will feature grilling stations, lounge seating, a bocce court, and dining space. The project is targeting LEED Silver Certification and is expected to reach substantial completion in December 2018. **B**



THE PRACTICE OF SOLUTIONS

Construction | Government Contracts
Real Estate Transactions

Ranked by **Chambers USA** as one
of the leading Construction law
firms in Washington, DC



**ASMAR | SCHOR
MCKENNA**

5335 Wisconsin Avenue, NW Suite 400
Washington, DC 20015
202-244-4264 ♦ www.asm-law.com

2018 Annual Sponsors

CORPORATE SPONSOR

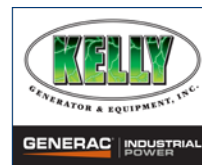


Anchor Construction, a CBE, specializes in utility construction: water, storm, sewer, ductbank, and concrete flatwork restoration. Also, as a general contractor, we perform roadway and bridge construction. Anchor's capability and expertise allow us to build new infrastructure and rehabilitate existing infrastructures.

STEEL SPONSORS



ALUMINUM SPONSORS



CONCRETE SPONSORS

Asmar, Schor & McKenna, PLLC
Clark Construction Group, LLC
Cohen Seglias Pallas Greenhall & Furman PC
EDG2, Inc.
Grunley Construction Company
Hensel Phelps

PCC Construction Components
Peckar & Abramson, P.C.
Rosendin Electric, Inc.
Telligent Masonry, LLC
Watt, Tieder, Hoffar & Fitzgerald, LLP

AGGREGATE SPONSORS

Chutes International

ECS Mid-Atlantic, LLC

ANCHOR CONSTRUCTION CORPORATION



**EXCELLENCE,
OUR BEDROCK FOR SUCCESS**

Our mission is to form

"Partnerships resulting in innovative, cost effective and quality construction, exceeding our customers' expectations in a safe environment."



Approved Contractor for:



"Anchor Construction Corporation is Happy to Support the WBC FY' 18 Annual Corporate Sponsorship"

- Florentino Gregorio
President

Anchor Construction, a CBE, specializes in utility construction: water, storm, sewer, ductbank, and concrete flatwork restoration. Also, as a general contractor, we perform roadway and bridge construction. Anchor's capability and expertise allow us to build new infrastructure and rehabilitate existing infrastructures.

Offices in Washington, D.C. & Maryland

Licenses in: VA, MD, DC, DE



WATER

New Members

New Members

Assurance Agency

3033 Wilson Blvd., 7th Floor
Arlington, VA 22201
p: 202-638-8247
www.assuranceagency.com
Representatives: **Jack Groseclose,**
Eric Wolfrey

Casey Construction Group, LLC

8340-B Beechcraft Ave.
Gaithersburg, MD 20879
p: 301-977-0374
f: 301-977-0376
www.caseyconstruction.com
Representatives: **Steve Casey, Michael Elias,**
Justin Gibbons, Sarah Leonard,
Rachel Tharp, Chris Velez, Steve Walter

G&M Services, LLC

7525 Connelley Dr., Suite T-U
Hanover, MD 21076
p: 410-787-8828
f: 410-787-8830
www.gmservices.ws
Representatives: **Ralph Ambrosio,**
Mike Kaspersky, Todd McKee,
Andrew Tomlinson

Syska Hennessy Group, Inc.

1250 H St., NW, Suite 800
Washington, DC 20005
p: 202-899-3200
f: 202-899-3199
www.syska.com
Representatives: **Roman J. Roman,**
Michael Terrigno

Advertise in the
Bulletin
Call (202) 293-5922
for more information



DATA CENTERS. BIOTECH/
PHARMA. HEALTHCARE.
COMMERCIAL. HIGH
TECH. RENEWABLE
ENERGY. EDUCATION.
HOTELS. INSTITUTIONAL.
TRANSPORTATION.

WWW.ROSENDIN.COM



ENGINEERING DESIGN GROUP

LEADERS →

MEP Engineering for
Building Industry

RELIABILITY
SUSTAINABILITY
AVAILABILITY

[ISO 9001-2008 Certified]

www.edg2.com

New Small Business Members

Building Envelope Consulting, LLC

108 Church St., SE, Suite A
Leesburg, VA 20175
p: 540-999-6232
www.becllc.com
Representatives: **Julie McDonald,**
Michael L. Williams

CBRE

1861 International Dr.
McLean, VA 22102
p: 703-921-6900
f: 703-442-4956
www.cbre.com
Representatives: **Meghan Walters,**
Connor Wilson

FiberPlus, Inc.

8240 Preston Ct., Suite C
Jessup, MD 20794
p: 301-957-2150
www.fiberplusinc.com
Representative: **Stephen Hall**

Meyer Consulting Engineers Corporation

451 Hungerford Dr., Suite 600
Rockville, MD 20850
p: 301-738-5690
f: 301-738-5695
www.mcecorp.com
Representatives: **Charles Fountain,**
Thomas Ouska

Additional Representatives

Kirlin Group

515 Dover Rd.
Rockville, MD 20850
p: 301-424-3410
www.jjkllc.com
Representatives: **Christa Cagnasso,**
Lee Guill, Donnie Hammond,
Andrew Huck, Doug Makosy,
Darren Rozich, Bonnie Smith,
Lindsey Smith, Stefanie Timpke, Josh White

New Member Descriptions

Assurance Agency

Assurance Agency was founded in 1961 primarily focused on the construction industry. Now, its 450+ employees work hard to provide Business Insurance, Employee Benefits, Surety, Private Insurance and Financial Services solutions to clients. A "Top 50" broker and repeated national "Best Place to Work" winner, Assurance is among the largest and most awarded independent insurance brokerages in the country. For Assurance, value creation is premium reduction, loss rate reductions, risk mitigation, health improvements, compliance reviews, claim reduction and the overall improvements it makes for clients by minimizing risk and maximizing the health of their workforce.

Building Envelope Consulting, LLC

Building Envelope Consulting, LLC is a consulting and testing firm that specializes in the diagnosis of building envelope defects and the development of roofing/waterproofing/building exterior design.

Freestate

Electrical Companies

Comprehensive Electrical Construction and Service

Commercial
Government
Industrial
Secured Facilities
Healthcare
Financial Institutions
Educational



Toll Free: 866-863-7272

www.freestateelectric.com

Member of THE ELECTRICAL ALLIANCE

A Powerful Advantage



New Members

Casey Construction Group, LLC

Casey Construction Group, LLC is a commercial drywall and floor leveling contractor located in Gaithersburg, MD.

CBRE

With broader and deeper capabilities than any other company, CBRE is the leading full-service real estate services and investment organization in the world.

FiberPlus, Inc.

FiberPlus, Inc. is a Veteran-Owned Maryland Small Business. For 25 years, FiberPlus has provided structured cable/fiber backbone systems, Access Control and CCTV and DAS wireless solutions.

G&M Services, LLC

G&M Services, LLC was formally established in 1999, and from the start we have worked to build long-term relationships with our clients. We offer concrete cutting services and firestop installation services throughout Maryland, DC, Baltimore, Virginia and Pennsylvania. We are able to offer comprehensive concrete services that result in a more efficient work flow on the job site. With our decades of experience, you can trust G&M Services to cover any and all of your concrete cutting needs.

Meyer Consulting Engineers Corporation

Meyer Consulting Engineers Corporation is a professional organization specializing in structural engineering, parking consultation, materials testing & special inspections, and related professional services for the construction industry.

Syska Hennessy Group, Inc.

Syska Hennessy Group, Inc. is the leading global, full-service MEP, Information and Communication Technology (ICT) and Commissioning engineer for the government and commercial sectors. With more than 500 professionals across 17 offices, we provide a full range of engineering services for projects of every size and budget: from global headquarters to small office renovations; from the premier healthcare facilities to essential mission critical facilities. We are excited about the future. By integrating essential systems – lighting, power, audiovisual, security, wireless and the core networks – we are designing smarter buildings to improve the quality of the environment for occupants as well as reduce operating costs and environmental impact. Above all, we build long-term relationships with our clients. **B**



ARCHITECTURAL WALL SYSTEMS

Design assist specialty contractor supporting the building envelope with custom curtainwall and architectural wall systems.

7600-C Lindbergh Drive, Gaithersburg, MD 20879
301.417.1020 | www.teampcgc.com



Fox Rothschild LLP
ATTORNEYS AT LAW



**Experienced Construction
Litigation Attorneys and
Trusted Business Advisers in the
Private and Federal Arenas**

*Proud Sponsors of the
Washington Building Congress*

Reggie Jones

Construction Partner

Chair, Federal Government Contracts Practice

202.461.3111 | rjones@foxrothschild.com

Dirk Haire

Construction Partner

202.461.3114

dhaire@foxrothschild.com

Doug Hibshman

Construction Partner

202.461.3113

dhibshman@foxrothschild.com

Nick Solosky

Construction Partner

202.696.1460

nsolosky@foxrothschild.com

The background is a night-time aerial view of a city with illuminated buildings. Overlaid on this are several digital elements: a blue wireframe of a skyscraper on the right, a semi-transparent data dashboard on the left showing charts and graphs, and various icons (factory, CO2, lightning, Wi-Fi) connected by lines to the wireframe. Binary code (0s and 1s) is scattered across the scene.

SIEMENS

Ingenuity for life

When smarter buildings
drive smarter operations,
that's ingenuity for life.

Transparency is the key to greater energy and operational efficiency. Siemens Navigator powered by Sinalytics acquires and analyzes performance data for every building in your portfolio. The result: Comprehensive insights and powerful analytics combined in an easy-to-use cloud-based platform that tells you exactly what your building needs to deliver peak performance.

usa.siemens.com/navigator

WBC Calendar & Advertising Information

Events Calendar

January 2018

- **January 27**, 10:00 a.m.
WBC Polar Bear Plunge
National Harbor, Md.

February 2018

- **February 1**, 5:00 pm to 7:00 pm
Hammerheads Networking (under 40 years old) Lucky Strike, Washington, D.C.
- **February 9**, COB
Craftsmanship Awards Sponsorship
Deadline, WBC Office
- **February 15**
Women's Roundtable and Networking

March 2018

- **March 16**, 6:00 pm to 9:45 pm
62nd Craftsmanship Awards Banquet
Marriott Wardman Park Hotel, Washington, D.C.

April 2018

- **April 28**
Rebuilding Together Workday

May 2018

- **May 4**
Hammerheads Potomac River Cruise

June 2018

- **June 11**
Golf Outing
Golf Club at Lansdowne and Belmont
Country Club, Leesburg, Va.

The **Bulletin** covers issues of importance to the building industry, news about WBC members and information about upcoming events. The topics listed below will be covered as feature articles in upcoming issues of the **Bulletin**. Persons interested in contributing information or advertising should contact WBC before the third week of the month preceding the issue. The **Bulletin** is published ten times a year by WBC. To place an ad, submit material or for more information call **(202) 292-5922**.

Editorial Calendar

December/January
Member Charitable Giving

February/March
Innovation & Technology

April/May
Craftsmanship Awards & Hall of Fame

June/July
Rebuilding Together Workday

August/September
Marketing & Business Development

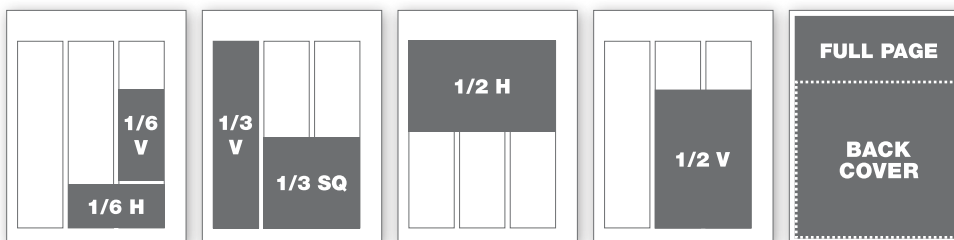
Ad Rates

	1 time	3 times	6 times
Member Rates:			
Black and White			
1/6 horizontal or 1/6 vertical	\$155	\$130	\$110
1/3 vertical or square	\$230	\$190	\$150
1/2 horizontal or vertical	\$430	\$350	\$290
Full-page	\$630	\$510	\$410
Color			
Inside Front Cover	\$730	\$590	\$480
Inside Back Cover	\$730	\$590	\$480
Back Cover	\$830	\$670	\$540

	1 time	3 times	6 times
Member Rates:			
Black and White			
1/6 horizontal or 1/6 vertical	\$210	\$176	\$149
1/3 vertical or square	\$311	\$257	\$203
1/2 horizontal or vertical	\$581	\$473	\$392
Full-page	\$851	\$689	\$554
Color			
Inside Front Cover	\$986	\$797	\$648
Inside Back Cover	\$986	\$797	\$648
Back Cover	\$1,121	\$905	\$729

Magazine trim size: 8.5" w x 11" h | Live area: 8.375" w x 10.875" h

Ad Sizes



1/6 horizontal	4.43" w x 2" h
1/6 vertical	2.1" w x 4.2" h
1/3 square	4.43" w x 4.2" h
1/3 vertical	2.1" w x 8.6" h
1/2 horizontal	6.75" w x 4.2" h
1/2 vertical	4.43" w x 6.38" h
Back Cover	8.0" w x 7.5" h
Full-page	8.25" w x 10.75" h
Full-page + bleed	8.5" w x 11" h +125" bleed



Formulated for the **Future of Glass**

PPG's former flat glass business unit was acquired by Vitro Glass to form North America's largest glass producer. Now, with an exclusive focus on glass, we're making investments to expand capabilities and capacity. Yet, there are some things that won't change.

- **Same Products** from the **Same Plants**
- **Same Technology** and **Distribution**
- **Same People**

Vitro and PPG. The same, but better.

That's why we're Formulated for the Future of Glass.



Local contact and WBC member:
George Sultage
Senior National Architectural Manager
412-400-2920
gsultage@vitro.com



Vitro Architectural Glass
vitroglazings.com
1-855-VTRO-GLS (887-6457)