

Bulletin

The Official Publication of the Washington Building Congress | June/July 2017

Inside >

Industry Report.....	2
2017 Rebuilding Together	11
Technology and Innovation	15
2017 Golf Outing.....	21
Member Projects	25
New Members.....	27
WBC Calendar.....	30



**BEFORE YOU CAN
GET TO WORK,
WE HAVE TO
FINISH OURS.**



CLEAN EARTH WITH US.

Recycling over 3.6 million tons of material in 2016, Clean Earth continues to grow with over 25 years of experience treating and recycling contaminated soil for beneficial reuses, including construction fill and brownfield reclamation. It is our unique capability of providing a one-source, full-service solution to handle multiple waste streams from a single customer that separates us from the competition.



CLEAN EARTH.

Faster, smarter, greener solutions.®

877.445.DIRT | www.cleanearthinc.com

Bulletin

June/July 2017

Washington Building Congress is a nonprofit association made up of professionals from a variety of disciplines, all with an active interest or involvement in the Washington Metropolitan Area's real estate, design, and construction community. The organization was established in 1937 to represent the collective interests of its members by providing education and networking opportunities and by promoting the advancement of the building industry. For additional information about membership, joining a committee or the WBC Bulletin, call (202) 293-5922 or visit us on the web at www.wbcnet.org.

CHAIRMAN OF THE BOARD

Joe Schall, Pepco

CHAIRMAN-ELECT

Dan Buckley, Anchor Construction

VICE CHAIRMAN

Carl Hirrlinger, DAVIS Construction

VICE CHAIRMAN

Mike Baruccheri, Tishman Construction,
An AECOM Company

VICE CHAIRMAN

Brett Snyder, GreenBench Companies

TREASURER

W. Emerson Teer, Clark Construction Group, LLC

SECRETARY

Chuck Claar, Branch and Associates

IMMEDIATE PAST CHAIRMAN

John Barron, Tishman Construction,
An AECOM Company

DIRECTORS

Jacinda Collins, American Institute of Steel Construction

Julie Forsht, Powersmiths

Sean Frazier, HSU Builders

Bob Freas, Exponent

Bob Frew, Balfour Beatty Construction

Gabriel Jahn, Dynalectric Company

Greg Koger, Holland & Knight

Erin Meitzler, Forrester Construction

Patrick Mercer, Siemens Industry

PRESIDENT & CEO

Steven J. Kenton

ASSOCIATE DIRECTOR

Rita F. Reiss

EDITOR/DESIGNER

Frost Miller Group

Bulletin is published 10 times a year by Washington Building Congress, Inc. Individual subscriptions are available for \$139 per year. The articles in this publication are the opinions of the authors and do not necessarily represent or reflect the policies or opinions of Washington Building Congress. Copyright 2017. All rights reserved.

Washington Building Congress

1100 Vermont Avenue, NW, Suite 700
Washington, DC 20005
T: (202) 293-5922 | F: (202) 429-1922
www.wbcnet.org

Chairman's Letter

Dear Members and Colleagues:



This issue of the *Bulletin* features the 2017 WBC Rebuilding Together Workday and recognizes the many devoted individuals and firms who helped make this major charitable undertaking successful. I would like to extend special recognition to the Community Services Committee, Co-Chairs Ken Ellis (Langan) and Rob Wenger (WCS Construction), House Captain and Vice-Chair Vanessa Carrion (Gilbane), and Board Liaison Greg Koger (Holland & Knight).

On April 29, WBC hosted the annual association Rebuilding Together workday. The Community Services Committee successfully coordinated the efforts numerous member firms and more than 50 individuals contributing over 500 volunteer hours. Congratulations to everyone involved with this special project. With the help of all involved, a deserving family is now enjoying an enhanced quality of life. Thank you to all involved with this special community service project and thanks again to Vanessa Carrion for her outstanding leadership and commitment.

Please take a moment to review the WBC Summer Golf Outing section recognizing our great sponsors and tournament winners. I would like to provide special acknowledgment to tournament sponsor Siemens Industry for their ongoing top level support. 432 industry supporters came out for an outstanding day of golf followed by the awards reception at The Golf Club at Lansdowne. Thank you to the Golf Outing Committee, Chair Christine Heffernan (HESS Construction) and Board Liaison Mike Baruccheri (Tishman Construction) for overseeing the tremendously successful outing on June 12.

The popular Spring Networking event was held on May 24 at Spider Kellys in Arlington with over 190 in attendance. Please be sure to join us for the always packed Summer Networking at Cactus Cantina on Wednesday, August 23, from 5:00 to 7:00 p.m.

The 80th annual WBC Fall Kickoff Bull & Oyster Roast, benefiting the Craftsman Hall of Fame, is scheduled for September 28 at Columbia Country Club. The event will once again feature the popular silent auction in support of the WBC Foundation and Hall of Fame. 100% of the net proceeds from the evening will benefit the Hall of Fame. We are seeking donations of event tickets, gift certificates, trips, merchandise, services, gift baskets, etc. for the auction. Please contact the WBC for further information and mark your calendars now for the Fall Kickoff.

The WBC Nominating Committee is accepting nominations for the FY'18 Board of Directors to take office on October 1, 2017. Nominations are due by close of business Friday, August 25. An official notice will be distributed at the end of August announcing the slate of candidates. Election of the new Board of Directors will take place at the annual membership meeting during the Fall Kickoff. The Nominating Committee will be chaired by Immediate Past Chairman of the Board John Barron.

I look forward to seeing you at the Summer Networking August 23 and the Fall Kickoff September 28. Thank you for your active participation and ongoing support of the WBC.

Best regards,

Joe Schall

WBC Chairman of the Board

WBC Corporate Sponsor



An Exelon Company

CONNECT WITH US:



↓
ABC 2014 & 2016
Masonry Subcontractor
of the Year

↓
ABC 2014, 2015 & 2016
Safety Training & Evaluation
Process Award, Gold Level

↓
WBC 2014 & 2017
Craftsmanship
Award Winner

↓
ASA 2014
Carson V. Carlisle Jr.
Safety Award

PARC MERIDIAN at Eisenhower Station

Architect:
Architects Collaborative, Inc.

General Contractor:
Paradigm Contractors, LLC



Telligent

Masonry Construction

2273 Research Boulevard | Suite 550
Rockville, Maryland 20850
(301) 926-9600



YEARS

©Ron Solomon Architectural Photography

T e l l i g e n t M a s o n r y . c o m



Record 238 Graduate from Washington, DC area Electrical Apprenticeship Program

During its 71st graduation ceremony, the Joint Apprenticeship and Training Committee (JATC) celebrated the graduation of 238 apprentices in June at Martin's Crosswinds in Greenbelt, MD. The graduates completed a rigorous electrical or telecommunications training program to become Journeyman Electricians.

Of the 238 graduates—the most the JATC has graduated in a single year—208 students graduated from the JATC's five-year Inside Wireman apprenticeship program. Graduates from this program completed over 800 hours of classroom instruction and 8,000 hours of supervised on-the-job training. In addition, one student graduated from the three-year Telecommunications program and became a technician. And lastly, 29 Residential Wireman completed the Residential Upgrade program and were upgraded to Inside Electrical Journeyman.

"Each of the 238 graduates have worked incredibly hard to get to the point," said JATC Director Chris Cash. "It's an honor to celebrate their achievement and welcome them into the Washington, D.C. electrical construction workforce. We know their contributions to the region's infrastructure will be many and profound over the next decades."

This year's Inside Wireman valedictorian was Marslince Carleah Fisher who earned a 99.28% academic average over five years. She is the JATC's first female valedictorian. During the graduation ceremony, Fisher commended the work of the JATC's dedicated instructors.

"I want to express my gratitude to our faculty. They are truly invested in our success as students and electrical professionals. They are passionate about our union and the future of it. They have shared their life and work knowledge with us and we have benefited from their wisdom," she remarked.

Additionally, Marcus K. Powell was the 2017 Telecommunications valedictorian with a 95.1% academic average and Herbert E. Mendoza was the



2017 Residential to Inside Wireman Upgrade valedictorian with a 93.53% academic average. Brian D. Hamilton was the 2017 Inside Wireman salutatorian with a 99.06% academic average and Jorge E. Romero was the 2017 Residential to Inside Wireman Upgrade salutatorian with a 92.78% academic average. In all, 26 inside wireman apprentices earned academic averages of 95% or above.

The JATC is sponsored by the Electrical Alliance, a cooperative effort between the Washington, D.C. Chapter of National Electrical Contractors Association (NECA) and the International

Top: JATC's five-year Inside Wireman apprenticeship program graduates
Bottom: JATC's RA Upgrade Program graduates

Brotherhood of Electrical Workers (IBEW), Local 26.

Gilbane Development Company announces promotions (photos)

Gilbane Development Company ("GDCO"), the real estate development, financing, and ownership arm of Gilbane, Inc., recently promoted **Russell Broderick** to senior vice president, and



**Quality
without
compromise.**

Award winning mechanical contractor serving the Washington DC area for over 80 years.



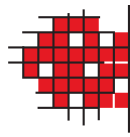
120 Westhampton Ave.
Capitol Heights, MD 20743
301-350-5000 | rmthornton.com



*Keeping the legal side
of your industry
in perspective
while you soar
to new heights*



BUILDING SOLUTIONS™
WATT TIEDER
WATT, TIEDER, HOFFAR & FITZGERALD, L.L.P.
www.watttieder.com



BOATMAN AND MAGNANI INC.
Award-winning Work Since 1960.

301.336.7700
600 Ritchie Road
Capitol Heights, MD 20743

**MARBLE ■ STONE ■ TERRAZZO ■ MOSAICS
SLATE ■ GRANITE ■ CERAMIC TILE**



**PROUDLY SUPPORTS THE
WASHINGTON
BUILDING CONGRESS
ANNUAL GOLF OUTING**

WWW.WHITING-TURNER.COM

CONSTRUCTION MANAGEMENT | GENERAL CONTRACTING
DESIGN-BUILD | INTEGRATED PROJECT DELIVERY

Robert V. Gilbane, Jr. to vice president. The promotions will serve to strengthen the company's "Next Level of Student Housing®" development platform and will contribute to growth strategy in the metropolitan Washington DC area.



Russell Broderick

Broderick joined Gilbane in 1992 and has vast experience in managing all aspects of development. Select projects completed/underway include Hill Farms State Office Building in Madison, WI; Surfside Narragansett in Narragansett, RI; and student housing projects including BlockONE in Ames, IA; 257 Thayer in Providence, RI; Rhode Island School of Design in Providence, RI; and, West Edge in Colorado Springs, CO. He has led GDCO's "Next Level of Student Housing®" platform for the past four years, which has successfully delivered over 5,300 beds with over 5,000 beds in the pipeline.



Robert Gilbane

Gilbane joined Gilbane Development Company in March 2012 after working for as an associate analyst and senior associate at Moody's Investor Services. As senior development manager, Gilbane has participated in public-private partnerships including mixed-use developments and affordable housing. In addition to managing relationships with municipalities to acquire special funding, he is also involved with the strategic direction, planning, approval and design of various developments. Most recently, he has overseen the development of affordable housing at The Grove at Parkside in Washington, DC, where he led site identification through occupancy in first quarter 2017. Gilbane is also leading development of West Hyattsville Metro and College Park Metro, two mixed-use/multifamily developments located on Washington DC's Metro rail system. He is a member of NAIOP Northern Virginia, Urban Land Institute, Maryland Building Industry Association, Housing Association of Nonprofit Developers, and CompeteDC - CEO Growth Academy.



Monarc Construction Marks Milestone

Monarc Construction Inc. celebrated 30 years of business with a reception for over 200 guests on the roof deck of the House of Sweden in June.

From top to bottom:

Monarc senior management team, from left to right: Gene Prichard, Randy Mullen, Mark Bellingham, Suzanne Staiger, John Bellingham, Tanya Bellingham, Byron Kassing (not pictured: Tri-Minh Phan & Jeff Konn)

Lynne Cook, Early Cassidy & Schilling; Tim Schilling & Melinda Schilling

Steve Spurlock, Quinn Evans Architects, and Suzanne Spurlock; David Haresign, Bonstra Haresign Architects

Dick Michaux, Retired Trammel Crow Residential Executive; John Bellingham and Dr. Robert Cristiano, Embassy Property Solutions



ENGINEERING CONSULTING SERVICES

GEOTECHNICAL | ENVIRONMENTAL | CONSTRUCTION MATERIALS | FACILITIES

www.ecslimited.com



FOOD & FRIENDS®

219 Riggs Rd., NE
Washington, DC

Help prepare and package, meals for and delivers meals and groceries to more than 1,400 people living with HIV/AIDS, cancer and other life-challenging illnesses throughout the Washington area.

Please register directly through Food & Friends at foodandfriends.org



Fox Rothschild LLP
ATTORNEYS AT LAW



**Experienced Construction
Litigation Attorneys and
Trusted Business Advisers in the
Private and Federal Arenas**

*Proud Sponsors of the
Washington Building Congress*

Reggie Jones

Construction Partner

Chair, Federal Government Contracts Practice

202.461.3111 | rjones@foxrothschild.com

Dirk Haire

Construction Partner

202.461.3114

dhaire@foxrothschild.com

Doug Hibshman

Construction Partner

202.461.3113

dhibshman@foxrothschild.com

Nick Solosky

Construction Partner

202.696.1460

nsolosky@foxrothschild.com

Ruppert Landscape Named *Lawn & Landscape* Top 100 Company

Ruppert Landscape has been named one of the largest landscape companies in North America by *Lawn & Landscape* magazine, having ranked 9th on the 2017 Top 100 list, which was published in May. The *Lawn & Landscape* Top 100 is based on 2016 revenue from landscape profit centers, and is reported by each company listed.

“We are humbled and grateful to be recognized among so many of the industry’s top performing companies,” said Phil Key, president. “We acknowledge that we owe our success to our dedicated team of over 1,300 employees who work hard each and every day to provide their best service to our customers, make our company stronger, and ultimately help us achieve our goals.”

“The companies on the Top 100 list represent an elite group in the landscape industry, and they represent what a landscaper is to thousands of homeowners and property managers across North America,” says *Lawn & Landscape* Editor and Associate Publisher Chuck Bowen. “The 100 companies on this year’s list are examples of what makes the landscape industry and its people so great: determination, dedication and serving a purpose greater than themselves.”

Ruppert Landscape Promotes Schofield (photo)



Tim Schofield

Ruppert Landscape announced the promotion of **Tim Schofield** to the position of financial analyst in their landscape management division.

Schofield began his career at Ruppert in early 2015 as a field manager in the company’s Laytonville landscape management branch, where he was quickly promoted to area manager. As an area manager, his hard work in the field and his ability to create lasting customer relationships and generate enhancement sales lead to him being



KEEP BUILDING.

“I embrace the concept of bringing added value to all types of clients, partnerships and projects. Everyone appreciates being treated with respect and being given good service.”

DON FREE, LEED AP
Face of Forrester Since 2005

Learn more about the Faces of Forrester at
www.forresterconstruction.com



Insurance Associates
insassoc.com

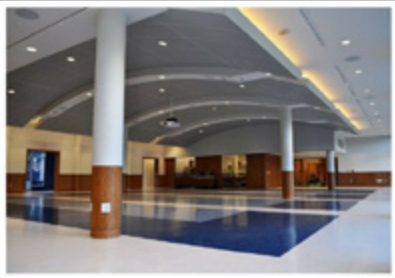
A full service agency
specializing in risk
management in the
construction industry.

“HESS has worked with Insurance Associates since 2008 and we continue to be impressed with their attention to detail, responsiveness, and customer focus. They clearly have vast knowledge in their specialty areas, provide focused representation, and always perform in a way that enhances their reputation. They have helped us navigate through numerous matters over the years and have always been an excellent partner with our best interests at heart. We look forward to continuing our partnership with Insurance Associates for many years to come.”

-Chuck Hess, Chief Executive Officer

60 YEARS STRONG

Knowledge / Representation / Reputation



HSU
WWW.HSUBUILDERS.COM
Committed to Excellence

SUCCESS

RESULTS FIRST™

P&A
Peckar & Abramson, P.C.

COUNSEL TO THE CONSTRUCTION INDUSTRY
2055 L STREET, N.W.
WASHINGTON, D.C. 20036
202.293.8815

NEW YORK, NY • RIVER EDGE, NJ • MIAMI, FL • WASHINGTON, D.C. • LOS ANGELES, CA
OAKLAND, CA • CHICAGO, IL • AUSTIN, TX • DALLAS, TX • HOUSTON, TX • DEVON, PA
WWW.PECKLAW.COM

Kalkreuth
Roofing and Sheet Metal

EXTERIOR ENVELOPE CONTRACTOR
301-418-6100 • WWW.KRSM.NET

WCS
CONSTRUCTION

BUILDING PARTNERSHIPS EXCEEDING EXPECTATIONS

[www.wcsconstruction.com](http://WWW.WCSCONSTRUCTION.COM)

[f](#) [in](#)


honored with the company's Branch Impact Award in 2016 for his outstanding contributions and dedication to the branch. He holds a bachelor's degree from the University of Delaware, where he triple-majored in food and agri-business marketing and management; landscape horticulture and design; and agriculture and natural resources. In his new position as financial analyst, he will support the division's regional management team with an array of tasks ranging from business analysis to project management, all with a focus on providing insight and efficiency opportunities to our branch teams.

In Memoriam, Frank Reaves, WBC Chairman from 1972-1973



Frank Reaves

Passed away peacefully on Saturday evening, May 13, 2017 at Suburban Hospital in Bethesda, MD. His family was grateful to be at his side over the last few days. Frank was born on May 2, 1924 in Richmond, VA, the son of Harry Lucius Reaves and Lillian Muncaster. He grew up in Martinsburg, WV and maintained many friendships there. He attended West Virginia University, the University of Louisville, Georgetown and American University. He was an engineer, a contractor, a business owner, an inventor and innovator, a veteran of the Navy V12 in WWII, a student of international law, and an incredibly thoughtful and generous family man and friend. He was a supporter of many charities, churches, communities, and associations, including St. Luke's Church, Kiwanis, Rotary, and Central Union Mission. As the president of R.M. Thornton, Inc. for 29 years and chairman for 25 years, he helped build post-war Washington, DC and contributed to many landmark construction projects, from the Capital Reflecting Pool to the Metro, Washington National Cathedral, the National Gallery and National Institutes of Health. He was past President of the

Washington Building Congress and the Mechanical Contractors Association of D.C. Frank cared deeply about the world and its people, with a particular focus on the environment, poverty, and international peace. It's impossible to count how many individual people he helped as well. He never passed someone asking for money without giving something; he never heard someone talk about their dream without offering his support in pursuing it. People who met Frank trusted him immediately, and he was always worthy of that trust. He believed in honesty, fairness, hard work and generosity, and taught those values to everyone around him by demonstrating them every day. Frank is survived by his beloved wife of 69 years, Jane Slater Reaves; daughter Jean (Paul); son, John (Cheryl); son, Robert (Rita); grandchildren, Nicholas, Emma, Julia and Amy; numerous step-grandchildren; and nieces and nephews, Wednesday, Frank, Lee, Ann, Vicky, John Paul, Matt, Nanci and Alan. 

THE PRACTICE OF SOLUTIONS

Construction | Government Contracts
Real Estate Transactions

Ranked by **Chambers USA** as one of the leading Construction law firms in Washington, DC



ASMAR | SCHOR
MCKENNA

5335 Wisconsin Avenue, NW Suite 400
Washington, DC 20015
202-244-4264 • www.asm-law.com

**EXCELLENCE,
OUR BEDROCK FOR SUCCESS**

Our mission is to form

"Partnerships resulting in innovative, cost effective and quality construction, exceeding our customers' expectations in a safe environment."

Approved Contractor for:









"Anchor Construction Corporation is Happy to Support the Washington Building Congress"

- Florentino Gregorio
President

Anchor Construction, a CBE, specializes in utility construction: water, storm, sewer, ductbank, and concrete flatwork restoration. Also, as a general contractor, we perform roadway and bridge construction. Anchor's capability and expertise allow us to build new infrastructure and rehabilitate existing infrastructures.

Offices in Washington, D.C. & Maryland
Licenses in: VA, MD, DC, DE

2254 25th Place, N.E. Washington, D.C. 20018 | Phone: (202) 269-6694 | Fax: (202) 529-3144 | www.anchorconst.com



THE ENERGY BEHIND YOUR POWER.

We're proud to support the Washington Building Congress,
and to provide safe, reliable energy to more than 842,000
customers in the District of Columbia and Maryland.



An Exelon Company



WBC Community Service Project

2017 Rebuilding Together Workday

Washington Building Congress members and supporters participated in the 29th annual Rebuilding Together National Workday on Saturday, April 29. The project was overseen by House Captain Vanessa Carrion (Gilbane), Safety Coordinator Edward Dudlik (Morgan Stanley) and Trash Coordinator Jane Cherneny (McCoy Associates), along with Community Services Committee Co-Chairs Ken Ellis (Langan) and Rob Wenger (WCS Construction). Thank you to all of the outstanding committee members, volunteers and supporters of this annual WBC community service project. As always, we went well beyond the original scope of work again this year.

Community Services Committee Vice-Chair Vanessa Carrion, who served as House Captain, organized an outstanding team of over 50 volunteers for the day. Due to the high level of work involved with the property, many tasks were started prior to and finished following the project workday. Work on the house included extensive interior and exterior repairs, full exterior lead paint remediation and painting, interior plaster repair, major yard cleanup, mulching, landscaping and more.

Rebuilding Together is a leading national nonprofit in safe and healthy housing with more than 40 years of service. Together with corporate and community partners, they transform the lives

of low-income homeowners by improving the safety and health of their homes and revitalizing communities. Rebuilding Together's local affiliates and nearly 100,000 volunteers complete around 10,000 rebuild projects nationwide each year.

Over the years, Rebuilding Together programs have rehabilitated over 130,000 homes and non-profit facilities by utilizing over 3 million volunteers. Rebuilding Together provides home repairs free of charge and gives priority to those low-income households with older adults, persons with disabilities, and families with children. Rebuilding Together has over 200 affiliates that work year-round to preserve affordable homeownership and revitalize communities across the country.

With the efforts of more than 62,000 community volunteers, local Rebuilding Together Arlington/Fairfax/Falls Church has repaired over 3,200 homes and non-profit facilities since becoming involved with the national program in 1988. This neighbor-helping-neighbor approach unites more than 2,000 skilled and unskilled volunteers with low-income homeowners and non-profit organizations each year. Volunteers are able to make both major and minor repairs and renovations that result in life changing improvements for the homeowners and organizations served.

For more information on the Rebuilding Together program, please go to wbcnet.org and rebuildingtogether.org. **B**





Thank You to Our Rebuilding Together Workday Volunteers!

On behalf of the committee, Co-Chairs Ken Ellis and Rob Wenger and Vice-Chair Vanessa Carrion, thank you for helping our industry help others in need. This major community service project would not have happened without your commitment and support! Special thanks also go to Vanessa for serving as House Captain this year.

Our team accomplished a great deal at the property and this was a very rewarding project.

We also would like to thank Aerotek for providing coffee/bagels/fruits and Boston Properties for providing coffee/donuts and plenty of pizzas for the entire group lunch. We were able to make good use of all extra food!

We hope to see everyone again next year for the WBC Rebuilding Together Workday.

Volunteers

Bill Bartling • Brendan Bartling • Stephanie Bauer • Nick Belcher • Matt Bonifant
Vanessa Carrion • Susan Castellan • Jane Cherney • Chuck Claar • Susan Craig • Juan Cueva Janiqua
Davis • Juliana Del Pozo • Robert DeSano • Micheline Diakite • Edward Dudlik
Brenna Duncan • Dan Ejigu • Ken Ellis • Kent Fee • Alexis Gilligan • Brittany Gribeck
Geoff Grooms • Francis Homer • Taylor Huserau • Tyler Julian • Cecilia Kelly • Steve Kenton
Greg Koger • Steve Kosiba • Jon Kurtis • Devin Lubking • Keven Lugo • Ryan McKilley
Mike McLean • Andy Miller • Lauren Mizzell • Logan Phillips • Rita Reis • Tina Rickman
Ray Ritchey • Kendall Sims • David Smith • Kendal Smith • Cherese Stevens • Mason Thomas
Kipp Vilker • Cassidy Wenger • Rob Wenger • Travis Whitfield • John Young • Grace Zammitti

Aerotek Crew • ATS Studios Crew • CB Flooring Crew • Harry and Sons Roofing Crew
Pillar Construction Crew • Precision Wall Tech Crew • Ruppert Landscape Crew
WCS Construction Crew

Rebuilding Together is the nation's leading nonprofit organization working to preserve affordable homeownership and revitalize neighborhoods by providing extensive rehabilitation and modification services to those in need at no cost to those served.

www.rebuildingtogether-aff.org



ROSENDIN ELECTRIC

THERE'S NEVER BEEN A BETTER TIME TO INNOVATE.

ROSENDIN.COM

THE JBG COMPANIES

CREATING AND ENHANCING VALUE FOR MORE THAN 50 YEARS

🐦 f in

JBG.COM

For Senior Residents, Better Living Starts with Better Communication

Powered by CommScope Connectivity Solutions

By Tom Napoli, Vice President, Noovis

As today's tech-savvy seniors transition to retirement living, Wi-Fi connectivity is a necessity, not a luxury. To meet its residents' rising expectations and stay ahead of the competition, Erickson Living chose CommScope to provide state-of-the-art network connectivity to its senior residential communities.

Erickson Living is one of the largest developers and managers of continuing care retirement communities in the United States. The company provides a complete continuum of retirement and continuing care options — from independent living through higher levels of care — to help aging adults live better, more fulfilling lives.

Starting with a single facility 34 years ago, Erickson now owns and manages 19 communities across 11 states that more than 24,000 residents call home. The company employs more than 13,000 staff members and manages more than 30,000,000 sq. ft. of residential and community building space.

Meeting residents' growing demand for better connectivity

When seniors move into an Erickson Living facility, they want the same level of Wi-Fi and internet connectivity they've become accustomed to in their old homes. New and prospective residents' adult children also expect superior services to help them stay in touch with their parents after they move.

Erickson recognized that its residents were becoming more and more tech savvy and wanted to invest in broadband infrastructure to support



"Now that we have deployed a Fiber Deep network with the CommScope connectivity solution, our residents and staff are well connected. In addition, this broadband network is enabling additional value added applications that drive Smart Building and Green initiatives. This connectivity will help us manage our facility more efficiently and provide retirement living services to our valued residents more effectively."

— Hans Keller, V.P., IT Operations and Customer Support
Chief Information Security Officer, Erickson Living

their networking needs and provide superior service to all who live in, work at, and visit an Erickson community.

With many competitors already offering Wi-Fi and Internet, Erickson needed to upgrade its current capabilities to add additional service that would improve the resident experience and maintain competitive advantage in their markets.

CommScope fiber solutions deliver gigabit wireless service

To provide the expanded and improved connectivity their residents demanded, Erickson Living decided to install gigabit passive optical networks (GPONs) at seven of its campuses in 2015 — and

CommScope's RapidFiber™ hub and terminal optical LAN solution was selected for the new GPON fiber plants.

This state-of-the-art, plug-and-play FTTX system is designed to deploy optical fiber distribution networks for a variety of architectures— and do it in less time and at less total cost. With RapidFiber, the Erickson networks could be installed without the addition of racks of equipment or the closets needed to house those racks.

With CommScope's pre-terminated RapidReel fiber cable, there was no need for field connectorizing or splicing. This dramatically sped up the installation of the fiber plant, which lowered

Technology and Innovation

labor costs and minimized impact on the residents. The robust construction of the hubs and terminals allowed them to be placed in almost any location where space was available. In addition, the system allows easy flexibility and scalability to add more bandwidth easily as needed, at lower overall cost.

Designed and deployed by a CommScope PartnerPRO™ provider

Maryland, USA-based Noovis LLC is a leading network solutions provider focused on designing, building, integrating, supporting and maintaining fiber optic and wireless networks for large-building and campus environments.

A trusted member of the CommScope PartnerPRO™ Network, Noovis provided a complete turnkey solution for Erickson Living, for both new construction and existing campus retrofits. Currently providing full PON, DAS and Wi-Fi network support for 9,000 users, the deployment includes more than 200+ miles of fiber, 11 optical line terminals with more than 8,000 optical network terminals, and 3,000 wireless access points.

Noovis designed, engineered and installed all electronic and fiber components; deployed shared fiber backbones for DAS and PON; and provided cutover support for porting from previous service providers. They also offered technical expertise to the Erickson IT team for PON provisioning and turn-up services and coordinating the DAS implementations.

Anytime, anywhere access to high-speed internet

After the solution deployment, Erickson Living residents now enjoy state-of-the-art Wi-Fi internet access wherever they go in the community. The network offers a high-speed connection to ensure high levels of availability, quick downloads and instant access, with the cost included as part of their monthly service fee — no separate provider bill to pay.

The network also offers added security for residents, with private access to the Wi-Fi network via their smartphones, tablets, laptops, printers and other

EDG ENGINEERING DESIGN GROUP

LEADERS → MEP Engineering for Building Industry

RELIABILITY
SUSTAINABILITY
AVAILABILITY

[ISO 9001-2008 Certified]

www.edg2.com



BUILT FOR Washington, DC

HENSEL PHELPS
Plan. Build. Manage.

f | in | t

Driven by passion,
united by purpose.

HITT

CONNECT WITH US AT HITT.COM

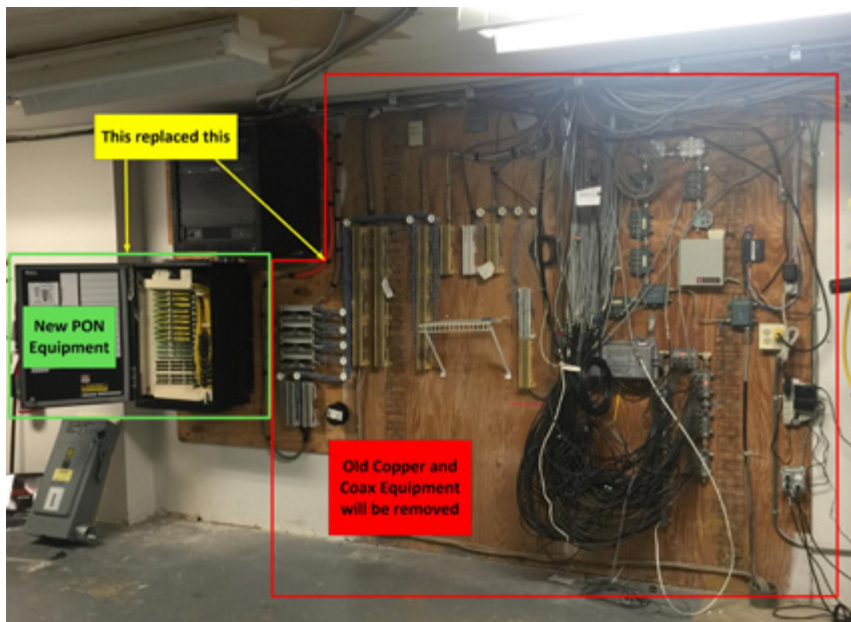
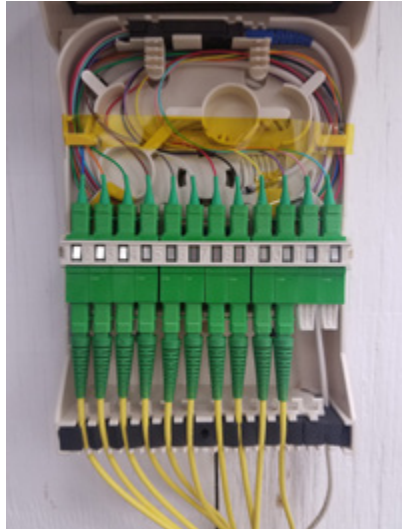
Technology and Innovation

devices. Tech support is also improved, with a dedicated centralized call center, staffed by Erickson employees, offering a high level of personalized service.

Ready now for future service and security enhancements

Connected by CommScope fiber, Erickson's robust, expandable system is future-ready for additional services, including access control, video surveillance, building automation, resident health monitoring and more. The system will power the Erickson Now integrated electronic communication platform for residents, staff, residents' families and sales prospects. Residents will be able to use the system to schedule activities, check meal counts, view their bills, and confirm doctor appointments and more.

The network will also enable secure smartcard access to campus buildings and resident apartments; smartcard point of sale charges on campus; electronic and video security monitoring; and fire, smoke and motion detector alarm response. **B**



6305 IVY LANE
SUITE 800
GREENBELT, MD 20770
301.656.7800

INTEGRITY | EXCELLENCE | EXPERIENCE | LEADERSHIP



"Erickson Living needed a connectivity solution that could be quickly and easily deployed, with minimal disruption to their residents, and which could be replicated across a diverse range of campus layouts. CommScope's solution provided optimal installation flexibility while requiring little or no modification of the existing facilities."

— David Brown, CommScope—SVP, R&D CCS,
Connectivity Solutions

Real-Time Trade Resource Technology

What Is It, How It Works, and Its Benefits

By David Miller, LEED BD&C,
Principal, Verity Commercial

Taking your project to the next level by improving cost control, communication, efficiency, risk management, and decision-making can be achieved with the latest technology in real-time trade resource reporting and analytics.

What Is It

Real-time trade resource programs use the latest technology in project reporting and risk management. The program uses site based positional technology to identify exactly who is onsite at any time and translates the analytical data into a

valuable project management tool. This information is instant, live, and real.

How It Works

The program is designed to assist the entire team in managing their manpower while using real-time trade resource technology as a planning tool. Actual manpower is evaluated against planned manpower in each trade. This allows the project team to address issues before they impact schedule or cost and promotes better scheduling by each member of the team including the general contractor and subcontractors.

Its Benefits

Verity Commercial is working with this latest technology at 1221 Van

Street and West Half Street projects in DC through Eyrus. Eyrus provides the software and works as a site hardware to gather information in real time on construction projects. 1221 Van Street and West Half Street projects are two of about 20 projects in the DC metro area using Eyrus' technology.

Through our experience, we have found the following benefits to using this latest technology:

- Project managers, general contractors, and trade contractors can better coordinate and manage the work.
- Ability to identify project trends much sooner than through conventional daily construction reports.



Technology and Innovation

Project VERITY COMMERCIAL

TODAY	OVERVIEW	CSI DIVISIONS	CONTRACTS	REPORTS
CSI DIV#	CSI DIVISION	ACCUMULATED FORECAST DEVIATION	TRADE FORECAST	ON SITE TODAY
Div 09	Finishes	-47%	20	9
Div 05	Metals	-27%	7	2
Div 22	Plumbing	-10%	31	22
Div 26	Electrical	-6%	11	5
Div 03	Concrete	18%	49	41
Div 04	Masonry	4749%	1	4
Div 00	Procurement and Contracting Requirements	0%	0	5
Div 01	General Requirements	0%	0	6
Div 02	Existing Conditions	0%	0	0
Div 06	Wood, Plastics, Composites	0%	0	0
Div 07	Thermal and Moisture Protection	0%	0	1

- Quickly address manpower deficiencies before they impact schedule or cost.
- Instantly identify the difference between planned and actual manpower.
- Identify late starts and manpower shortages in each trade. This information is then shared with the project team in real time and allows the responsible party to respond with a recovery plan.
- Identify the true impact of unexpected events.
- Improve analyzing schedule impacts and cost of change orders.
- Accurately track labor associated with authorized time, overtime, and material change order work.
- Verify that workers have vacated the site in the event of a site evacuation during an emergency.
- Tailor the real-time trade resource program to provide specific project information to owner management and lending institutions.
- Track and promote the consistency of manpower with the goal of increasing quality.

BUILT to SUCCEED in



COHEN SEGLIAS
PALLAS GREENHALL & FURMAN PC
Attorneys at Law

1828 L Street, NW
Suite 705
Washington, DC 20036
202.466.4110

www.cohenseglia.com
www.constructionlawsignal.com
www.fedconblog.com
www.investigationslawblog.com

PENNSYLVANIA NEW JERSEY NEW YORK DELAWARE MARYLAND WASHINGTON, DC KENTUCKY



DATA CENTERS. BIOTECH/
PHARMA. HEALTHCARE.
COMMERCIAL. HIGH
TECH. RENEWABLE
ENERGY. EDUCATION.
HOTELS. INSTITUTIONAL.
TRANSPORTATION.

ROSENDIN ELECTRIC

WWW.ROSENDIN.COM

Technology and Innovation

- Enhance communication and teamwork throughout the life of the project and increase project productivity with better results.

For more information on Eyrus' latest real-time trade resource reporting and analytics technology visit www.eyrus.com. For more information about Verity Commercial visit veritycommercial.com.

About the Author

David Miller has been in the construction industry for 32 years and has completed projects in all market sectors including life sciences, healthcare, hospitality, government commercial, mission critical, education and tenant improvements. He manages Verity's construction services and is focused on expanding the business practice throughout the Mid-Atlantic.

About Verity Commercial

Verity Commercial is a commercial real estate advisory and investment company located in Reston, VA, that has extensive experience in brokerage, project management, and investment sales. Verity Commercial enables business owners and executives to transform real estate from a necessary business expense into a strategic business advantage. Verity simplifies complexity. **B**

WBC FALL KICKOFF BULL & OYSTER ROAST

Thursday, September 28, 2017
Columbia Country Club
Chevy Chase, MD



ARCHITECTURAL WALL SYSTEMS

Design assist contractor supporting the building envelope with custom curtainwall and architectural wall systems

7600-C Lindbergh Drive, Gaithersburg, MD 20879
301.417.1020 | www.teamppc.com



Smart Field Service Solutions



Get peak performance from not only your field service workers, but also from your back-office and mid-office teams. With the Gomocha FMP360 toolkit, you'll have everything you need to deliver the right information to the right people—the first time and every time.

www.gomocha.com



WBC 2017 GOLF OUTING WINNERS

BELMONT COURSE

FIRST PLACE
JE RICHARDS, INC.—TEAM 2

MEN'S LONGEST DRIVE
GARRETT PECK

WOMEN'S LONGEST DRIVE
SARAH DANIELS

CLOSEST TO THE PIN
GARRETT PECK

PUTTING GREEN
ERIC KRAHE

JONES COURSE

FIRST PLACE
WCS CONSTRUCTION—TEAM 1

MEN'S LONGEST DRIVE
CASEY KERSEY

WOMEN'S LONGEST DRIVE
MELISSA NELSON

CLOSEST TO THE PIN
BRYAN GASSENMEYER

PUTTING GREEN
SETH ROGGE

NORMAN COURSE

FIRST PLACE
**JOHN MORIARTY AND
ASSOCIATES—TEAM 1**

MEN'S LONGEST DRIVE
ERIC KRUEL

CLOSEST TO THE PIN
SCOTT CONN

PUTTING GREEN
RACHEL THARP

50/50 RAFFLE TICKET
CHRIS JASIOTA



WBC 2017 GOLF OUTING

THANK YOU TO OUR SPONSORS!

TOURNAMENT
SIEMENS INDUSTRY

COURSE
THE WHITING-TURNER
CONTRACTING COMPANY (BELMONT)
TELLIGENT MASONRY, LLC (JONES)
ROSENDIN ELECTRIC, INC. (NORMAN)

GOLFER GIFT
ALTIMATE ELECTRIC, INC.
DAVIS CONSTRUCTION
KELLY GENERATOR & EQUIPMENT

RECEPTION
HITT CONTRACTING INC.
SK&A STRUCTURAL ENGINEERS, PLLC

GOLF CART
DYNALECTRIC COMPANY
MILWAUKEE TOOL COMPANY

HOLE-IN-ONE CONTEST
GOLDIN & STAFFORD

LUNCH FOOD STATIONS
ANCHOR CONSTRUCTION CORPORATION
CAPITOL POWER GROUP [4 STATIONS]
HESS CONSTRUCTION + ENGINEERING
SERVICES

CLOSEST-TO-PIN
GENERAL WOODWORKING CORP.
WASHINGTON GAS | A WGL COMPANY

LONGEST DRIVE
CAPITAL TRISTATE
ELECTRICAL DISTRIBUTOR

EXPONENT
PRECISION WALL TECH

PUTTING GREEN CONTEST
SCAFFOLD RESOURCE

DRIVING RANGE
SHAPIRO & DUNCAN, INC.

HOLE SPONSORS
BALFOUR BEATTY CONSTRUCTION
BOATMAN AND MAGNANI, INC.

CARRIER
CUMMINS POWER SYSTEMS, LLC
DOMINION MECHANICAL CONTRACTORS
DYNALECTRIC COMPANY [3 HOLES]

GRAYBAR ELECTRIC
GRUNLEY CONSTRUCTION COMPANY
[3 HOLES]
HARVEY-CLEARY BUILDERS
JOHN H. HAMPSHIRE, INC.
MCMANUS & FELSEN LLP
MISCELLANEOUS METALS
PAGE SOUTHERLAND PAGE, INC.
PECKAR & ABRAMSON

CARRIER (CONT.)
PERFORMANCE CONTRACTING
PERLECTRIC, INC.

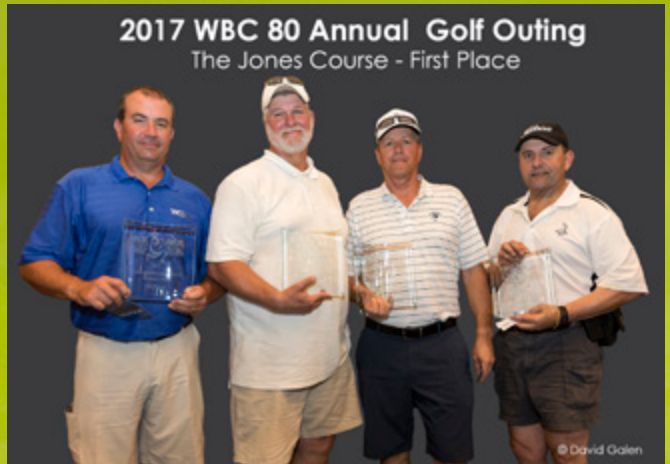
RAND* CONSTRUCTION
SPECIFIED ELECTRICAL SYSTEMS
VERITY COMMERCIAL, LLC
VERTIV
WCS CONSTRUCTION, LLC

SPECIAL THANKS
—VOLUNTEERS—
LAURA ALLOWAY, JORDAN BARKUS
AND ALYSSA MARTIN—
ROSENDIN ELECTRIC, INC.

TRIHN ALDEN AND AMBER MELLA—
DYNALECTRIC COMPANY
BRIAN LOCKWOOD—
THE SNEAD COMPANY
ANNE WILKS—HITT CONTRACTING
TARA MINNER AND ELIZABETH JUSTIS—
SCAFFOLD RESOURCE

—GIVEAWAYS—
MILWAUKEE TOOL CO. (PENS)
PECKAR & ABRAMSON
(KOOZIES AND STRESS BALL)
CRITICAL SYSTEMS BY SCHNEIDER
ELECTRIC (TOWEL)

WBC 2017 GOLF OUTING PHOTO GALLERY



The background is a night-time aerial view of a city with illuminated buildings. A prominent skyscraper on the right is overlaid with a blue wireframe grid. Various digital icons are scattered across the scene: a factory, a leaf, a lightning bolt, a CO2 symbol, and a Wi-Fi symbol. A semi-transparent data dashboard is visible on the left, showing charts and graphs. Binary code (0s and 1s) is floating in the air, and glowing lines connect different points in the digital space.

SIEMENS

Ingenuity for life

When smarter buildings
drive smarter operations,
that's ingenuity for life.

Transparency is the key to greater energy and operational efficiency. Siemens Navigator powered by Sinalytics acquires and analyzes performance data for every building in your portfolio. The result: Comprehensive insights and powerful analytics combined in an easy-to-use cloud-based platform that tells you exactly what your building needs to deliver peak performance.

usa.siemens.com/navigator

Member Projects

Ruppert Landscape was recently selected to provide landscape, earthwork, pavers, concrete flatwork, site amenities, masonry, drainage, irrigation, and maintenance at the **International Spy Museum** in Washington, DC. The eight-story 140,000-square-foot museum will be built on top of the existing L'Enfant Plaza mixed use development and will feature three floors of exhibit space, an interactive theater, and educational, office and event spaces.

In addition, Ruppert Landscape will provide landscape, silva cells, earthwork, pavers, concrete flatwork, site amenities, drainage, and irrigation at **The Yards Parcel O** in Washington, DC. This 10-story, 267-unit mixed-use community, located in the Capitol Riverfront district, includes residential, office, retail and restaurant space and the award-winning waterfront Yards Park, all within walking distance of Capitol Hill and the Washington Nationals ballpark. The project consists of three towers over a shared garage.

Donohoe Construction broke ground on **The Glover House** in Washington, DC, a 250,000-square-foot multifamily project involving the complete renovation of a seven-story existing mid-70s-era hotel building and the new construction of a four-story building with a combined total of 226 units. The project will also include new construction of a retail grocery building and approximately 90,000 square feet of below-grade parking. Developed by Glover Park Residential, LLC c/o JBG/DC Manager, LLC and designed by Eric Colbert & Associates, The Glover House will feature amenity spaces such as a café, rooftop pool and deck, whiskey room, fitness center, and a game room.

Frost Miller has been hired to provide marketing support for the first-ever **Crohn's and Colitis Congress™** developed through a partnership of the Crohn's & Colitis Foundation and the American Gastroenterological Association (AGA). This new annual inflammatory bowel diseases (IBD) congress, which will take place in January 2018, will serve as the premier conference for IBD health-care professionals and researchers. The program will be

International Spy Museum, Washington, DC (Rendering courtesy of The JBG Companies®)



The Glover House, Washington, DC



Member Projects

comprehensive, patient-centered and multidisciplinary, and bring state-of-the-art comprehensive care together with the latest research to accelerate advances in the prevention, treatment and cures for IBD patients. Frost Miller will work with the two organizations to develop an overall theme for the event, and then design subsequent marketing pieces, including print and web banner ads, direct mail and more.

In July, construction partners Minimally Invasive Vascular Centers (MIVC) and **Forrester Construction** celebrated a major project milestone for the new **Vascular Surgery Center** being constructed at 9201 Cherry Lane, Laurel, MD. The 23,000-square-foot, three-floor structure was “topped out” – an occasion marked with a beam signing, speeches and party with food trucks, a DJ and radio broadcast. The new Vascular Surgery Center will focus on the diagnosis and treatment of all diseases of the arteries, veins and lymphatic systems. MIVC’s goal is to offer minimally invasive treatment with an emphasis on patient education, early diagnosis, non-invasive treatment, prevention and maintenance. **B**



Advertise in the
Bulletin
Call (202) 293-5922
for more information

Full Service Electrical Contractor Specializing in the Following Services:

- 24-hour Emergency Service
- Preventive Maintenance Services
- Infrared Thermography Scan
- Lighting Retrofits
- Estimating/Budget Services
- Mission Critical Facility Maintenance
- Service Contracts
- Generator/UPS Installations
- Design-Build/Assist Capabilities
- 3D Modeling
- Fire Alarm Tenant Fit-out
- Fire Alarm Retrofits of Existing Systems
- Fire Alarm/Sprinkler Testing & Service

Celebrating 50+ Years of Gold Standard Service!

 **Dynalectric**
An EMCOR Company

22930 Shaw Road, Suite 100, Dulles, VA 20166
Call: 703-724-3500
Visit: www.dynalectric-dc.com

New Members

ABB Inc.

1455 Pennsylvania Ave., NW, Suite 670
Washington, DC 20004
p: 202-638-1256
f: 202-737-1311
www.abb.com
Representatives: **Joel Kirkham,**
Howard Robertson

New Small Business Members

Cap8 Construction, DBA Cap8 Doors & Hardware

5786 2nd St., NE
Washington, DC 20011
p: 202-695-3993
www.cap8doors.com
Representative: **Lisa Williams**

Helbling & Associates, Inc.

8000 Brooktree Rd., Suite 100
Wexford, PA 15090
p: 724-935-7500
f: 724-935-7531
www.helblingsearch.com
Representatives: **Thomas Dunn,**
Wendy Zang

McKeever Services Corporation

11166 Fairfax Blvd., Suite 405
Fairfax, VA 22030
p: 703-691-1100
f: 703-273-9756
www.mckeever-services.com
Representative: Alison Marr



OWINGS, MD
P: 410.257.5225

BUTLER, PA
800.677.3815

WWW.KGE.COM

RELY ON OUR EXPERTISE



YOUR PREMIUM GENERATOR SUPPLIER

Generator & Transfer Switch Sales, Planned Maintenance Contracts, Generator Rentals, Replacement Parts, Load Banks, Service, Training.

Kelly Generator & Equipment, Inc. is a coordinated rapid response organization known for the quality of our service and the reliability of our generators. KG&E strives to provide our customers with quick and professional solutions to their electrical power needs. Ensure optimum quality in every product sold, professional, honest straight-forward relationships with our customers, and superior service for the life of our products.

What's under our hard hat?

HISTORIC RENOVATION



GRUNLEY

New Member Descriptions

ABB Inc.

ABB (ABBN: SIX Swiss Ex) is a pioneering technology leader in electrification products, robotics and motion, industrial automation and power grids, serving customers in government, utilities, industry and transport & infrastructure globally. Continuing more than a 125-year history of innovation, ABB today continues to build towards excellence in industrial digitalization and driving the Energy and Fourth Industrial Revolutions. ABB operates in more than 100 countries with about 132,000 employees. The U.S. headquarters are located in Raleigh, NC and the Washington, DC offices are located in the Willard Office Building.

Helbling & Associates

Helbling & Associates conducts retained executive searches, specializing exclusively in architecture, engineering and construction; facilities management; and real estate development. Among their clients are top-ranked general, specialty and heavy civil contractors, healthcare and higher education institutions, real estate developers, public agencies and corporate entities. For these clients, they have secured individuals for a variety of capacities, from executive administrative to financial, from facilities management to construction oversight, and from marketing to human resources.

Established in 1992 by Tom Helbling, the firm's reputation centers on its ability to successfully perform complex and challenging searches, its highly consultative business demeanor, and its integrity. Helbling & Associates focuses on partnering with their clients, acting as an extension of their organizations, and supporting their strategies, initiatives and objectives. The firm offers the sophistication and resources of a large, national search firm while, as a specialized boutique operation, brings personalized consulting and attention to detail that builds long-term relationships.

McKeever Services Corporation

Founded in 1974, McKeever Services Corporation provides a broad range of construction consulting services focused on jurisdictional and regulatory mandates. The company provides owners, developers, general contractors, architects and engineers a comprehensive range of permit process management services, geotechnical engineering, inspections and testing services.

WE BUILD DC



Proudly Serving the Washington Building Congress!

www.tishmanconstruction.com



YOU MAY NOT SEE US AND WE'RE OKAY WITH THAT.

In fact, we take pride in it.

At Black & Veatch we work with our clients to design, build and operate the things that deliver the energy, water and communications services you use every day.

Visit bv.com/you to learn more.



2017 Annual Sponsors

CORPORATE SPONSOR



An Exelon Company

Pepco, a subsidiary of Exelon Corporation (NYSE: EXC), delivers safe, reliable electric service to more than 842,000 customers throughout Maryland and the District of Columbia.

STEEL SPONSORS



ALUMINUM SPONSORS



CONCRETE SPONSORS

Asmar, Schor & McKenna, PLLC
Black & Veatch
Boatman and Magnani, Inc.
Clark Construction Group, LLC
Cohen Seglias Pallas Greenhall & Furman PC
ECS Mid-Atlantic, LLC
EDG2, Inc.
Foulger-Pratt
Grunley Construction Company
Hensel Phelps

HITT Contracting Inc.
HSU Builders
Kalkreuth Roofing and Sheet Metal
PCC Construction Components
Peckar & Abramson, P.C.
RM Thornton Mechanical
Rosendin Electric, Inc.
Telligent Masonry, LLC
Watt, Tieder, Hoffar & Fitzgerald, PLLC
The Whiting-Turner Contracting Company

WBC Calendar & Advertising Information

Events Calendar

August 2017

- **August 23**, 5-7 p.m.
Summer Networking
Cactus Cantina, Washington, DC

September 2017

- **September 28**
Fall Kickoff Bull & Oyster Roast
Columbia Country Club, Chevy Chase, MD

December 2017

- **December 12**
WBC Holiday Party
Congressional Country Club, Bethesda, MD

Editorial Calendar

December / January
Members Giving Back

February / March
Technology and Innovation

April / May
Craftsmanship Awards and
Hall of Fame

June / July
Rebuilding Together

August / September
Marketing & Business
Development

October / November
WBC Leadership & Committees

The **Bulletin** covers issues of importance to the building industry, news about WBC members and information about upcoming events. The topics listed below will be covered as feature articles in upcoming issues of the **Bulletin**. Persons interested in contributing information or advertising should contact WBC before the 15th of the first month of each two-month issue (for example, content for the February/March issue would be due February 15th). The **Bulletin** is published six times a year by WBC. To place an ad, submit material or for more information call **(202) 293-5922**.

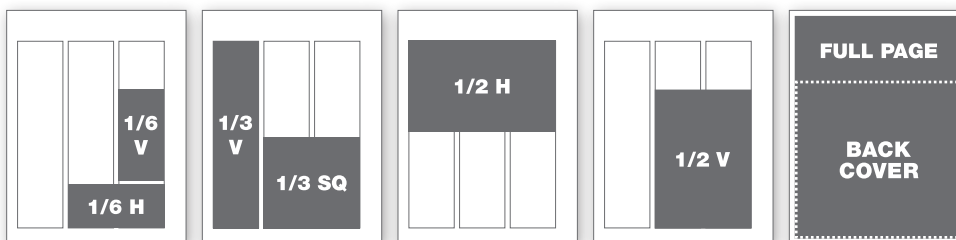
Ad Rates

	1 time	3 times	6 times
Member Rates:			
Black and White			
1/6 horizontal or 1/6 vertical	\$155	\$130	\$110
1/3 vertical or square	\$230	\$190	\$150
1/2 horizontal or vertical	\$430	\$350	\$290
Full-page	\$630	\$510	\$410
Color			
Inside Front Cover	\$730	\$590	\$480
Inside Back Cover	\$730	\$590	\$480
Back Cover	\$830	\$670	\$540

	1 time	3 times	6 times
Member Rates:			
Black and White			
1/6 horizontal or 1/6 vertical	\$210	\$176	\$149
1/3 vertical or square	\$311	\$257	\$203
1/2 horizontal or vertical	\$581	\$473	\$392
Full-page	\$851	\$689	\$554
Color			
Inside Front Cover	\$986	\$797	\$648
Inside Back Cover	\$986	\$797	\$648
Back Cover	\$1,121	\$905	\$729

Magazine trim size: 8.5" w x 11" h | Live area: 8.375" w x 10.875" h

Ad Sizes



1/6 horizontal	4.43" w x 2" h
1/6 vertical	2.1" w x 4.2" h
1/3 square	4.43" w x 4.2" h
1/3 vertical	2.1" w x 8.6" h
1/2 horizontal	6.75" w x 4.2" h
1/2 vertical	4.43" w x 6.38" h
Back Cover	8.0" w x 7.5" h
Full-page	8.25" w x 10.75" h
Full-page + bleed	8.5" w x 11" h +125" bleed



Formulated for the **Future of Glass**

PPG's former flat glass business unit was acquired by Vitro Glass to form North America's largest glass producer. Now, with an exclusive focus on glass, we're making investments to expand capabilities and capacity. Yet, there are some things that won't change.

- **Same Products** from the **Same Plants**
- **Same Technology** and **Distribution**
- **Same People**

Vitro and PPG. The same, but better.

That's why we're Formulated for the Future of Glass.



Local contact and WBC member:
George Sultage
Senior National Architectural Manager
412-400-2920
gsultage@vitro.com



Vitro Architectural Glass
vitroglazings.com
1-855-VTRO-GLS (887-6457)