

Bulletin

Inside >

Industry Report.....	3
Chairman Profile.....	7
Craftsman Hall of Fame.....	9
Fall Kickoff.....	11
Member Projects.....	14
New Members.....	16
WBC Calendar.....	20

The Official Publication of the Washington Building Congress | Oct./Nov. 2016



Craftsman Hall of Fame Campaign | p. 9



2016 Fall Kickoff | p. 11



CLEANEARTH®

SOIL TREATMENT, PROCESSING, & RECYCLING.

NEW LOCATION



Clean Earth of Greater Washington Upper Marlboro, MD

Clean Earth now has 2 locations in Maryland to better serve our customers in the MD | VA | D.C. area. Clean Earth of Greater Washington and Clean Earth of Maryland are both non-hazardous soil treatment, processing and recycling facilities strategically located for faster, smarter, greener solutions.

REQUEST A QUOTE TODAY

CLEANEARTHINC.COM | 877.445.DIRT (3478)

WBC Board of Directors 2016–2017



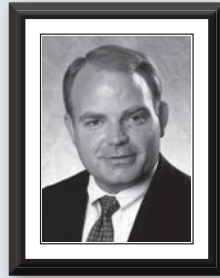
CHAIRMAN OF THE BOARD
Joseph D. Schall, P.E.
Pepco



CHAIRMAN-ELECT
Dan Buckley
Anchor Construction Corporation



VICE CHAIRMAN
Michael Baruccheri
*Tishman Construction,
An AECOM Company*



VICE CHAIRMAN
Carl Hirrlinger
DAVIS Construction



VICE CHAIRMAN
Brett Snyder
GreenBench Companies



TREASURER
W. Emerson Teer
Clark Construction Group, LLC



SECRETARY
Chuck Claar
Branch and Associates



IMMEDIATE PAST CHAIRMAN
John P. Barron
*Tishman Construction,
an AECOM Company*



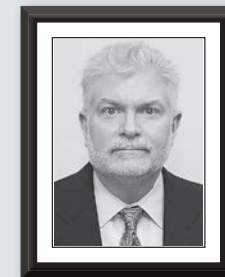
DIRECTOR
Jacinda L. Collins, P.E.
American Institute of Steel Construction



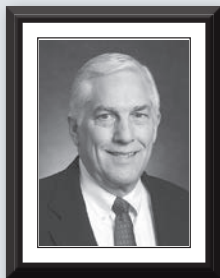
DIRECTOR
Julie Forsht
Powersmiths



DIRECTOR
Sean Frazier
HSU Builders



DIRECTOR
Robert Freas
Exponent



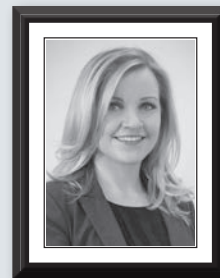
DIRECTOR
Bob Frew
Balfour Beatty Construction



DIRECTOR
Gabriel Jahn, LEED AP
Dynalectric Company



DIRECTOR
Gregory H. Koger
Holland & Knight LLP



DIRECTOR
Erin Meitzler
Forrester Construction Company



DIRECTOR
Patrick Mercer
Siemens Industry, Inc.

Bulletin

October / December 2016

Washington Building Congress is a nonprofit association made up of professionals from a variety of disciplines, all with an active interest or involvement in the Washington Metropolitan Area's real estate, design, and construction community. The organization was established in 1937 to represent the collective interests of its members by providing education and networking opportunities and by promoting the advancement of the building industry. For additional information about membership, joining a committee or the WBC Bulletin, call (202) 293-5922 or visit us on the web at www.wbcnet.org.

CHAIRMAN OF THE BOARD

Joe Schall, Pepco

CHAIRMAN-ELECT

Dan Buckley, Anchor Construction

VICE CHAIRMAN

Carl Hirrlinger, DAVIS Construction

VICE CHAIRMAN

Mike Baruccheri, Tishman Construction,
An AECOM Company

VICE CHAIRMAN

Brett Snyder, GreenBench Companies

TREASURER

W. Emerson Teer, Clark Construction Group, LLC

SECRETARY

Chuck Claar, Branch and Associates

IMMEDIATE PAST CHAIRMAN

John Barron, Tishman Construction,
An AECOM Company

DIRECTORS

Jacinda Collins, American Institute of Steel Construction

Julie Forsht, Powersmiths

Sean Frazier, HSU Builders

Bob Freas, Exponent

Bob Frew, Balfour Beatty Construction

Gabriel Jahn, Dynalectric Company

Greg Koger, Holland & Knight

Erin Meitzler, Forrester Construction

Pat Mercer, Siemens Industry

PRESIDENT & CEO

Steven J. Kenton

ASSOCIATE DIRECTOR

Rita F. Reis

EDITOR/DESIGNER

Frost Miller Group

Bulletin is published 10 times a year by Washington Building Congress, Inc. Individual subscriptions are available for \$139 per year. The articles in this publication are the opinions of the authors and do not necessarily represent or reflect the policies or opinions of Washington Building Congress.
Copyright 2016. All rights reserved.

Washington Building Congress
1100 Vermont Avenue, NW, Suite 700
Washington, DC 20005
T: (202) 293-5922 | F: (202) 429-1922
www.wbcnet.org

CONNECT WITH US:



Chairman's Letter

Dear Members and Colleagues:



I was honored to take office as the 79th WBC Chairman of the Board on October 1, 2016. We started the new membership year off with the excellent Fall Kickoff and installation of officers attended by 260 members and guests at Columbia Country Club. Thank you to everyone who supported this significant event and for your ongoing support of the Craftsman Hall of Fame. The association followed up in October with the popular Oktoberfest Networking event at Sauf Haus Bier Hall with over 160 people. We will once again cap off a very eventful 2016 with the WBC Holiday Party at Congressional Country Club on December 13.

I would like to congratulate and welcome to the members of the WBC Board of Directors who were installed at the Fall Kickoff in September. John Barron kindly passed the chairman's gavel off to me during the event. As Immediate Past Chairman, John will be serving as chairman of the WBC Foundation and overseeing the Craftsman Hall of Fame campaign. A very special thank you goes to John for his numerous years of leadership and service to the association. Following are the WBC officers and directors who will be serving our outstanding organization over the next year:

FY'17 WBC Board of Directors

- **Joe Schall**
Chairman of the Board
Pepco
- **Dan Buckley**
Chairman-Elect
Anchor Construction
- **Carl Hirrlinger**
Vice-Chairman
DAVIS Construction
- **Mike Baruccheri**
Vice Chairman
Tishman Construction,
An AECOM Company
- **Brett Snyder**
Vice Chairman
GreenBench Companies
- **W. Emerson Teer**
Treasurer
Clark Construction Group, LLC
- **Chuck Claar**
Secretary
Branch and Associates
- **John Barron**
Immediate Past Chairman
Tishman Construction,
An AECOM Company
- **Jacinda Collins**
Director
American Institute of
Steel Construction
- **Julie Forsht**
Director
Powersmiths
- **Sean Frazier**
Director
HSU Builders
- **Bob Freas**
Director
Exponent
- **Bob Frew**
Director
Balfour Beatty Construction
- **Gabriel Jahn**
Director
Dynalectric Company
- **Greg Koger**
Director
Holland & Knight
- **Erin Meitzler**
Director
Forrester Construction
- **Pat Mercer**
Director
Siemens Industry

Planning for the 2017 WBC Craftsmanship Awards program started in early September. The deadline for submission of entries for the 61st annual event is November 14. On January 12, teams of industry judges will evaluate all entries based upon recognized standards associated with quality craftsmanship. The Craftsmanship Awards program will culminate on Friday, March 31, with the magnificent awards banquet recognizing over 400 individual craftsmen and honoring the new Hall of Fame inductees. If you would like serve as a judge, be a sponsor, or view further information regarding Craftsmanship Awards, please visit the WBC website at wbcnet.org.

As we move into the new fiscal year, I would also like to take this opportunity to ask that you please renew your WBC membership, if you have not already done so. We will need the support and participation of everyone in order to move forward as a unified group. The membership year runs from October 1 to September 30, and annual renewal payments must be received no later than December 30 for members to be included in the 2017 WBC Industry Index membership directory. Additionally there are many great advertising opportunities still available for the printed directory. If you have questions regarding membership renewal, sponsorship or advertising, please contact Rita Reis at (202) 293-5922.

Finally, the WBC Holiday Party is fast approaching. This extremely popular industry event is scheduled for Tuesday, December 13, at the magnificent Congressional Country Club in Bethesda. Please plan on attending what is generally recognized as the premiere industry holiday event attended by over 700 people.

I look forward to seeing you at an upcoming WBC program or event. Thank you for your ongoing support.

Best regards,

Joe Schall
WBC Chairman of the Board

WBC Corporate Sponsor



An Exelon Company

↓
ABC 2016
Masonry Subcontractor
of the Year

↓
ABC 2016
Safety Training & Evaluation
Process Award, Gold Level

↓
WBC 2014
Craftsmanship
Award Winner

↓
ASA 2014
Carson V. Carlisle Jr.
Safety Award

HILTON HOMEWOOD SUITES
Arlington, Virginia

GENERAL CONTRACTOR:
DONOHOE CONSTRUCTION CO.

ARCHITECT:
GORDON & GREENBERG ARCHITECTS



Telligent
Masonry Construction

2273 Research Boulevard | Suite 550

Rockville, Maryland 20850

(301) 926-9600

T e l l i g e n t M a s o n r y . c o m

Electrical Alliance Contractors Top Washington Business Journal Annual List of Largest Electrical Contractors

The *Washington Business Journal* recently ranked the top 16 electrical contractors in the D.C. metropolitan area, 13 of which are Electrical Alliance contractors.

The Electrical Alliance is a cooperative effort between electrical contractors of the Washington, D.C. Chapter of National Electrical Contractors Association (NECA) and skilled craftsmen of the International Brotherhood of Electrical Workers (IBEW), Local Union 26.

The Electrical Alliance contractors on the list (based on 2015 Washington metro-area revenue) were:

- **Power Solutions LLC** – \$253.88 million
- **Dynalectric, An EMCOR Group Inc. Co.** – \$152.3 million
- **Freestate Electrical Cos.** – \$141 million
- **J.E. Richards Electric Inc.** – \$122.05 million
- **Mona Electric Group Inc.** – \$112 million
- **Rosendin Electric** – \$109.13 million
- **Singleton Electric Co. Inc.** – \$82.25 million
- **Power Services Inc.** – \$48 million
- **PerLectric Inc.** – \$43.2 million
- **Contemporary Electrical Services Inc.** – \$33.91 million
- **Heller Electric Co. Inc.** – \$26.37 million
- **RTL Electric Co. Inc.** – \$21.4 million
- **Adcock's Systems LLC** – \$14.6 million

The 13 Electrical Alliance contractors on the *Washington Business Journal's* list have worked on large-scale projects including the African American History and Culture Museum, Blue Plains Wastewater Treatment Plant, Ballou High School and many others.

"These Electrical Alliance contractors made the WBJ list because of their extraordinary efforts to deliver exceptional value and satisfaction to their customers," said Andrew Porter, executive director, Washington, D.C. Chapter of NECA. "And, together, our 200 Electrical Alliance contractors are an important part of our economy, employing more than 7,000 IBEW workers in the region."



YOU MAY NOT SEE US AND WE'RE OKAY WITH THAT.

In fact, we take pride in it.

At Black & Veatch we work with our clients to design, build and operate the things that deliver the energy, water and communications services you use every day.

Visit bv.com/you
to learn more.



Fox Rothschild LLP
ATTORNEYS AT LAW



Experienced Construction Litigation Attorneys and Trusted Business Advisers in the Private and Federal Arenas

*Proud Sponsors of the
Washington Building Congress*

Reggie Jones

Construction Partner

Chair, Federal Government Contracts Practice
202.461.3111 | rjones@foxrothschild.com

Dirk Haire

Construction Partner

202.461.3114
dhaire@foxrothschild.com

Doug Hibshman

Construction Partner

202.461.3113
dhibshman@foxrothschild.com

Nick Solosky

Construction Partner

202.696.1460
nsolosky@foxrothschild.com

Insurance Associates Hires One, Promotes Two

Insurance Associates is recently announced the hire of a new associate, Karen Garceau, and the promotion of two employees: **Lexi Stock** and **BJ Westner**.

Garceau was hired to Insurance Associates in May 2016. Her career started early in high school working for her father's property and casualty insurance firm in Maine. For 20 years after, she specialized in construction at an independent insurance agency in Florida.

Garceau was responsible for account management, risk management, client services, marketing, sales, and agency operations. She brings her greatest strengths to IA that consists of understanding the unique insurance needs of the construction industry and her ability to solve problems. Garceau graduated from Florida State College at Jacksonville and also earned her Certified Insurance Counselor designation in 2003 and Certified Risk Manager Designation in 2009.

IA promoted Stock to director of marketing and communications for the agency. She has been with IA since 2012 and has developed their strategic marketing plan from the ground up. Her marketing responsibilities include increasing brand awareness, agency newsletters, social media, e-blast campaigns, and the company website. In addition to marketing responsibilities Stock also demonstrates IA's interactive portal to clients and manages all public relations activities for the agency. Stock also represents IA as Chairman for Associated Builders and Contractors of Metro Washington (ABC)'s Young Professionals Group, ABC.XYZ. She received both her BBA and MBA from Loyola University Maryland.

Westner was promoted to senior claims consultant. He has been a significant part of IA's claims team for over four years and has made a huge impact in the agency's ability to provide top notch, value-added service

WE BUILD DC



Proudly Serving the Washington Building Congress!

www.tishmanconstruction.com

Full Service Electrical Contractor Specializing in the Following Services:

- 24-hour Emergency Service
- Preventive Maintenance Services
- Infrared Thermography Scan
- Lighting Retrofits
- Estimating/Budget Services
- Mission Critical Facility Maintenance
- Service Contracts
- Generator/UPS Installations
- Design-Build/Assist Capabilities
- 3D Modeling
- Fire Alarm Tenant Fit-out
- Fire Alarm Retrofits of Existing Systems
- Fire Alarm/Sprinkler Testing & Service

Celebrating 50+ Years of Gold Standard Service!



22930 Shaw Road, Suite 100, Dulles, VA 20166
Call: 703-724-3500
Visit: www.dynalectric-dc.com

to its clients. With over 16 years of claims experience, his technical skills, education, and eye for detail, Westner has been an aggressive advocate for IA's clients. Since joining the agency, he has assisted clients with large and complex claims as well as helped clients lower their experience mod and implement proactive back to work programs. Whether he's using case law to get a claim paid or using his wealth of multi-lines claims knowledge to answer many "what if" scenarios, Westner is always available to help a client with their claims needs. He graduated from the Associated Builders and Contractors of Metro Washington's Leadership Development Program in 2015. **B**

SUCCESS

RESULTS FIRST™

P&A
Peckar & Abramson, P.C.

COUNSEL TO THE CONSTRUCTION INDUSTRY
2055 L STREET, N.W.
WASHINGTON, D.C. 20036
202.293.8815

NEW YORK, NY • RIVER EDGE, NJ • MIAMI, FL • WASHINGTON, D.C. • LOS ANGELES, CA
OAKLAND, CA • CHICAGO, IL • AUSTIN, TX • DALLAS, TX • HOUSTON, TX • DEVON, PA
WWW.PECKLAW.COM

BUILDING WASHINGTON FOR OVER A CENTURY

CLARK CONSTRUCTION



HSU
WWW.HSUBUILDERS.COM

Committed to Excellence

EXCELLENCE, OUR BEDROCK FOR SUCCESS

Our mission is to form

"Partnerships resulting in innovative, cost effective and quality construction, exceeding our customers' expectations in a safe environment."

Approved Contractor for:

ANCHOR CONSTRUCTION CORPORATION

"Anchor Construction Corporation is Happy to Support the Washington Building Congress"

- Florentino Gregorio
President

Anchor Construction, a CBE, specializes in utility construction: water, storm, sewer, ductbank, and concrete flatwork restoration. Also, as a general contractor, we perform roadway and bridge construction. Anchor's capability and expertise allow us to build new infrastructure and rehabilitate existing infrastructures.

Offices in Washington, D.C. & Maryland
Licenses in: VA, MD, DC, DE

2254 25th Place, N.E. Washington, D.C. 20018 | Phone: (202) 269-6694 | Fax: (202) 529-3144 | www.anchorconst.com



THE ENERGY BEHIND YOUR POWER.

We're proud to support the Washington Building Congress,
and to provide safe, reliable energy to more than 842,000
customers in the District of Columbia and Maryland.



An Exelon Company



With A Focus On Education and Membership Growth, Schall Takes The Reins as the Washington Building Congress's 79th Chairman

Originally from Hicksville, NY, incoming Washington Building Congress Chairman, Joseph D. Schall, P.E., first came to the Washington, DC area in 1978 after graduating from Pennsylvania State University and taking an engineering position with Potomac Electric Power Company (Pepco). Over the years, Schall moved up through the ranks at Pepco, holding a variety of positions with ever-increasing responsibility.

Now, nearly four decades later, Schall serves as Principal Project Manager at Pepco. In this role, he provides leadership to multi-discipline teams in executing the design, licensing/permitting and construction of large electric system transmission and distribution projects—ensuring that projects are delivered on schedule and within budget.

While having participated in WBC's networking events early on, it wasn't until former Pepco executive William J. Sim (WBC Chair, 2006-2007) suggested that he get more involved with the organization that Schall took on a more active role. He served as Vice-Chair and, later, Chair of WBC's Program and Education Committee.

"It was an area of particular interest to me. It was what really attracted me to this wonderful organization to begin with—the networking, the people, the recognition of our crafts people."

As a result of Schall's dynamic involvement with the committee, he was later nominated to the WBC Board of Directors—ultimately working his way up to become Chairman of the Board.

As WBC's 79th Chairman, Schall intends to focus much of his effort on ensuring WBC's members are provided with great networking and business development events, as well as a variety of robust educational programs.

"We've got a really great [Program and Education] committee, now; and our programs are well attended. My intent is to provide [the committee] with the support and resources they need to develop and execute top-notch networking events and educational opportunities for our members."

Another of Schall's primary objectives for the coming year is to grow the WBC's membership; in particular, by increasing participation from small and minority businesses.

"I'm interested in crafting an externally-facing communications plan for expanding our membership base, and will work with our Membership and Communications Committees to explore how we might accomplish this."

Finally, Schall will oversee the ongoing construction of the Craftsman Hall of Fame exhibit at the WBC's headquarters. "This important exhibit celebrates the skill, dedication, and passion of the master craftsmen working in our construction industry."

Once the exhibit is complete, it will require additional funds to maintain operations. Therefore, the WBC Foundation has established a goal of raising \$250,000 to sustain its operations through 2025. "Through the generous support of our membership I'm certain we will achieve and surpass this funding goal." See article on [pg 9](#) for more information about the Craftsmanship Hall of Fame.

Schall lives in Anne Arundel County, Maryland, and is the proud father of three grown and successful children, and two grandchildren. When he has some time to himself, Schall enjoys golfing, traveling and catching an occasional Redskins game on TV.

"I became a Redskins fan when I first moved to the DC area in '78—it was easy then...they were really good! ...of course, it's a bit more challenging here these days." **B**

The background is a night-time aerial view of a city with illuminated buildings. Overlaid on this are several digital elements: a blue wireframe of a skyscraper on the right, a semi-transparent data dashboard on the left showing charts and graphs, and various icons (factory, CO2, lightning, Wi-Fi) connected by lines to the wireframe. Binary code (0s and 1s) is scattered across the scene.

SIEMENS

Ingenuity for life

When smarter buildings
drive smarter operations,
that's ingenuity for life.

Transparency is the key to greater energy and operational efficiency. Siemens Navigator powered by Sinalytics acquires and analyzes performance data for every building in your portfolio. The result: Comprehensive insights and powerful analytics combined in an easy-to-use cloud-based platform that tells you exactly what your building needs to deliver peak performance.

usa.siemens.com/navigator



Craftsman Hall of Fame Campaign

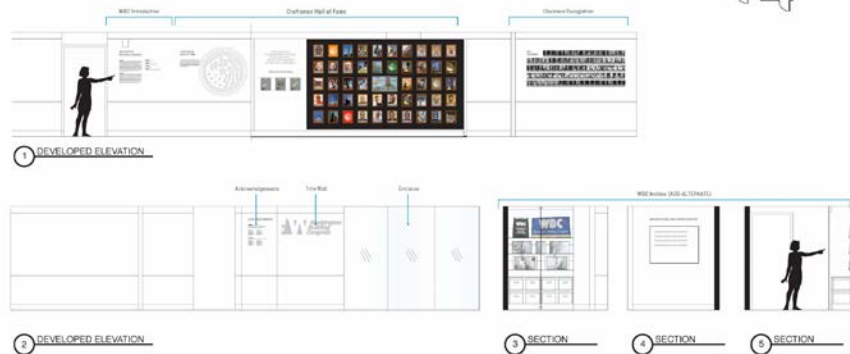
The Campaign for the Craftsman Hall of Fame seeks to raise \$250,000 to sustain ongoing operations for the Hall of Fame through June 2025. The Hall of Fame is co-located with the Washington Building Congress headquarters in downtown Washington, DC. It was designed by award-winning exhibit designer Ralph Appelbaum Associates of New York City and is being built by local exhibit fabricator Explus Incorporated. Construction is under way, and is currently scheduled for completion before the end of the year.

Founded in 2008, the Hall of Fame currently showcases 33 individuals who serve as exceptional examples of professionalism and dedication. The Craftsman Hall of Fame celebrates those who do—those who do the physical labor of building, day in and day out. In no other setting are the men and women who actually do the work elevated and honored for their extreme skill and dedication to their trade.

By sharing the personal stories of these superior craftsmen, the Hall of Fame promotes the highest professional standards and exemplary leadership models. Using interactive touch screen technology, the Hall of Fame is a permanent record of craftsmanship stories and achievements. Each inductee's story is told through video narrative so that visitors will understand why this work is vital and what inspires these master craftsmen.

Open to the public, the Craftsman Hall of Fame brings together all the trades. It celebrates skill, dedication, ambition, leadership and passion. And because construction trades are often “family affairs,” the Hall of Fame also memorializes the achievements of generations of family members who have dedicated themselves to honing a particular trade.

OVERVIEW ELEVATIONS



The Washington, DC region's built environment is the nation's historical record. The Craftsman Hall of Fame celebrates those craftsmen who made it possible, who created it. It is the most public of thank yous to the craftsmen who dedicated their lives to their chosen trade.

Serving as an inspirational platform, the Craftsman Hall of Fame will create visibility within the industry, encourage future generations of craftsmen and provide general public education about the construction trades.

For more information and sponsorship opportunities, please contact Steve Kenton at the Washington Building Congress Foundation, (202) 293-5922 or go online to www.wbcnet.org/community-outreach/hall-of-fame-campaign. **B**

“We want subcontractors who are experts in their field to partner with us, because we know that will give us the greatest success.”

- **Nik Salvi**

Face of Forrester since 2006

WASHINGTON BUILDING CONGRESS
CHAIRMAN, CRAFTSMANSHIP AWARDS COMMITTEE

KEEP BUILDING.

Thank You to Our Fall Kickoff Bull & Oyster Roast Sponsors!

AHA Consulting Engineers
American Institute of Steel Construction
Asmar, Schor & McKenna, PLLC
Black & Veatch
Boatman and Magnani
Chiaromonte Construction Company
Clark Construction Group, LLC
Clean Earth, Inc.
Cohen Seglias Pallas Greenhall & Furman PC
Dynalectric Company
ECS Mid-Atlantic, LLC
EDG2, Inc.
Exponent, Inc.
Foulger-Pratt
Grunley Construction Company
Hensel Phelps
HITT Contracting Inc.
Insurance Associates
The JBG Companies
Kalkreuth Roofing & Sheet Metal
Kelly Generator & Equipment, Inc.
Peckar & Abramson, P.C.
PEPCO
RM Thornton Mechanical
Rosendin Electric, Inc.
Siemens Industry
Telligent Masonry, LLC
Tishman Construction,
An AECOM Company
WCS Construction, LLC



2016 Fall Kickoff



2017 Annual Sponsors

CORPORATE SPONSOR



An Exelon Company

Pepco, a subsidiary of Exelon Corporation (NYSE: EXC), delivers safe, reliable electric service to more than 842,000 customers throughout Maryland and the District of Columbia.

STEEL SPONSORS



ALUMINUM SPONSORS



CONCRETE SPONSORS

Asmar, Schor & McKenna, PLLC
Black & Veatch
Boatman and Magnani, Inc.
Clark Construction Group, LLC
Cohen Seglias Pallas Greenhall & Furman PC
ECS Mid-Atlantic, LLC
EDG2, Inc.
Foulger-Pratt
Grunley Construction Company
Hensel Phelps

HITT Contracting Inc.
HSU Builders
Kalkreuth Roofing and Sheet Metal
PCC Construction Components
Peckar & Abramson, P.C.
RM Thornton Mechanical
Rosendin Electric, Inc.
Telligent Masonry, LLC
The Whiting-Turner Contracting Company



GCS, Inc. Celebrates Groundbreaking of The Residences at Gateway With DC Mayor Bowser

Donohoe Construction Company hosted a “Topping Out” celebration for **The Wharf Parcel 5 Hotels project** in Washington, DC in October. The 300,000-square-foot hospitality project at the mixed-use waterfront community will feature a dual-branded hotel by Hilton Worldwide and Hyatt Hotels Corporation.

Canopy by Hilton, a 120,000-square-foot luxury hotel, will have 175 keys, and **Hyatt House**, a 145,000-square-foot extended-stay hotel, will have 238 keys. The combined hotels will be connected through ground-level common areas and share amenities including, a cafe/bar, a fitness center, meeting room space, a courtyard with outdoor terraces, an outdoor pool and

a rooftop bar with expansive views of the Potomac River. The hotel site includes more than 30,000 square feet of street-level retail and restaurant space atop two levels of below grade parking. The hotels are currently scheduled to open as part of The Wharf’s first phase in Fall 2017.

The groundbreaking of **The Residences at Gateway** in Washington, DC took place last month, marking a critical path forward in ending homelessness in the District of Columbia and helping to revitalize portions of Bladensburg Road NE identified as part of the Great Streets initiative introduced by the DC Government in 2006. **GCS, Inc.** is serving as the project’s general contractor.

Member Projects

Michael Sigal, President of GCS, Inc., said, “This area of DC is particularly important to GCS; we just moved our offices back to our original location on Yost Place, NE where we have had a location for 30 years. We are excited about furthering the development in this neighborhood and providing affordable housing options to the residents of our city.”

The new 35,000 SF, 5-story apartment building replaced two vacant buildings at 2613-2615 Bladensburg Road NE. The first floor will host a mix of parking, administration, and apartment space, and the remaining floors will be home to a mix of 1- and 2-bedroom apartments. A reinforced concrete podium slab will be supplemented by stick frame construction for the second floor up. Upon completion, there will be a total of 33 apartment units and 17 parking spaces. It is important to note that 100% of the units will be Affordable Apartments. **B**



The Wharf Parcel 5 Hotels project, Washington, DC

THE PRACTICE OF SOLUTIONS

Construction | Government Contracts
Real Estate Transactions

Ranked by **Chambers USA** as one of the leading Construction law firms in Washington, DC



ASMAR | SCHOR
MCKENNA

5335 Wisconsin Avenue, NW Suite 400
Washington, DC 20015
202-244-4264 ♦ www.asmlaw.com



OWINGS, MD
P: 410.257.5225

BUTLER, PA
800.677.3815

WWW.KGE.COM

RELY ON OUR EXPERTISE



YOUR PREMIUM GENERATOR SUPPLIER

Generator & Transfer Switch Sales, Planned Maintenance Contracts, Generator Rentals, Replacement Parts, Load Banks, Service, Training.

Kelly Generator & Equipment, Inc. is a coordinated rapid response organization known for the quality of our service and the reliability of our generators. KG&E strives to provide our customers with quick and professional solutions to their electrical power needs. Ensure optimum quality in every product sold, professional, honest straight-forward relationships with our customers, and superior service for the life of our products.

New Members

New Members

Independent Custom Metalworks

4500 46th Street
Bladensburg, MD 20710-1010
p: 301-779-1391
f: 800-619-0863
www.independentmetalworks.com
Representatives: **Ann Gaines,**
Jon Scott Lindsey

Travelers Bond & Specialty Insurance

9954 Maryland Drive, Suite 6100
Richmond, VA 23233
p: 804-965-9264
www.travelers.com
Representative: **Kerry Wortzel**

New Small Business Members

Maryland Computer Service Inc.

8510 Wedding Drive
Welcome, MD 20693
p: 301-202-6521
www.marylandcomputerservice.com
Representative: **Steve Johnson**



BOATMAN AND MAGNANI INC. 301.336.7700
Award-winning Work Since 1960. 600 Ritchie Road
Capitol Heights, MD 20743

MARBLE ■ STONE ■ TERRAZZO ■ MOSAICS
SLATE ■ GRANITE ■ CERAMIC TILE



QUALITY
THAT STANDS THE TEST OF TIME



ENGINEERING DESIGN GROUP



LEADERS → MEP Engineering for Building Industry

RELIABILITY
SUSTAINABILITY
AVAILABILITY

[ISO 9001-2008 Certified]

www.edg2.com



WCS
CONSTRUCTION

BUILDING PARTNERSHIPS *EXCEEDING EXPECTATIONS*

www.wcsconstruction.com

New Member Descriptions

Maryland Computer Service

Maryland Computer Service focuses on advising business owners and managers how to maximize the use of their information technology to meet and exceed their IT products, services, and goals. Many companies designate an employee or even an entire department to manage their IT services. However, choosing an outside company to manage and consult regarding information technology gives companies an outside point-of-view on various decisions that are often overlooked internally. Maryland Computer Service is staffed with only the best IT professionals that focus on helping businesses maximize their technology. Their IT professionals will work closely with you to analyze your company's goals, then create and implement an effective IT plan to meet them.

Travelers Bond & Specialty Insurance

Travelers Construction Services provides bonding support for construction contractors of various sizes in various trades.



Driven by passion,
united by purpose.

HITT

CONNECT WITH US AT HITT.COM



ENGINEERING CONSULTING SERVICES

GEOTECHNICAL | ENVIRONMENTAL | CONSTRUCTION MATERIALS | FACILITIES

www.ecslimited.com

Advertise in the
Bulletin
Call (202) 293-5922
for more information



PUT YOUR PROJECT
IN EXPERIENCED HANDS

GRUNLEY

COMMERCIAL | INSTITUTIONAL | GOVERNMENT BUILDERS



**Quality
without
compromise.**

Award winning mechanical contractor serving the Washington DC area for over 80 years.



120 Westhampton Ave.
Capitol Heights, MD 20743
301-350-5000 | rmthornton.com



FOULGER-PRATT
We Build to Last | foulgerpratt.com
240.499.9600



**ROSENDIN
ELECTRIC**

DATA CENTERS. BIOTECH/
PHARMA. HEALTHCARE.
**COMMERCIAL. HIGH
TECH. RENEWABLE
ENERGY. EDUCATION.
HOTELS. INSTITUTIONAL.
TRANSPORTATION.**

WWW.ROSENDIN.COM



**CREATING AND ENHANCING VALUE
FOR MORE THAN 50 YEARS**



JBG.COM



FOOD & FRIENDS®

Third Saturday,
Monthly
10:00 A.M. – Noon

219 Riggs Rd., NE
Washington, DC

Help prepare and package, meals for and delivers meals and groceries to more than 1,400 people living with HIV/AIDS, cancer and other life-challenging illnesses throughout the Washington area.

*Open to members only
Limited to 10 volunteers
per month.*



6305 IVY LANE
SUITE 800
GREENBELT, MD 20770
301.656.7800

INTEGRITY | EXCELLENCE | EXPERIENCE | LEADERSHIP



ARCHITECTURAL WALL SYSTEMS

Design assist contractor supporting the building envelope with custom curtainwall and architectural wall systems

7600-C Lindbergh Drive, Gaithersburg, MD 20879
301.417.1020 | www.teampcg.com



Kalkreuth

Roofing and Sheet Metal

EXTERIOR ENVELOPE CONTRACTOR

301-418-6100 • WWW.KRSM.NET

BUILT FOR Washington, DC



BUILT to SUCCEED



COHEN SEGLIAS
PALLAS GREENHALL & FURMAN PC
Attorneys at Law

1828 L Street, NW
Suite 705
Washington, DC 20036
202.466.4110

www.cohenseglias.com
www.constructionlawsignal.com
www.fedconblog.com
www.investigationslawblog.com

PENNSYLVANIA NEW JERSEY NEW YORK DELAWARE MARYLAND WASHINGTON, DC KENTUCKY

WBC Calendar & Advertising Information

Events Calendar

November 2016

- **November 14**, 11:30 a.m. – 12:45 p.m.
Hammerheads Committee Meeting
Conference Call
- **November 14**, 5:00 p.m.
Craftsmanship Awards Nomination/Entry
Deadline: **Nomination forms must be received with payment at the WBC Office by 5:00 p.m.**
- **November 17**, 11:30 a.m. – 12:45 p.m.
Craftsmanship Awards Committee Meeting
WBC Office

- **November 17**, 5:00 – 8:00 p.m.
Evening Program: Higher Education Opportunities
Washington Marriott at Metro Center, Washington, DC

- **November 19**, 10:00 a.m. – 12:00 p.m.
Food & Friends (**Full members only**)
219 Riggs Road, NE, Washington, DC

December 2016

- **December 13**, 6:00 – 8:30 p.m.
Holiday Party
Congressional Country Club, Bethesda, MD

- **December 17**, 10:00 a.m. – 12:00 p.m.
Food & Friends (*open to members only*)
219 Riggs Road, NE, Washington, DC

January 2017

- **January 12**, 8:00 a.m. – 4:30 p.m.
Craftsmanship Awards Judging Day
Judges are to meet at Maggiano's Little Italy Restaurant, McLean, VA
- **January 12**, 4:30 – 7:00 p.m.
Winter Networking
Maggiano's Little Italy Restaurant, McLean, VA

The **Bulletin** covers issues of importance to the building industry, news about WBC members and information about upcoming events. The topics listed below will be covered as feature articles in upcoming issues of the **Bulletin**. Persons interested in contributing information or advertising should contact WBC before the third week of the month preceding the issue. The **Bulletin** is published ten times a year by WBC. To place an ad, submit material or for more information call **(202) 293-5922**.

Editorial Calendar

April / May
Craftsmanship Awards

June / July
Rebuilding Together

August / September
Sustainability

October / November
FY'17 WBC Leadership

December / January
Members Giving Back

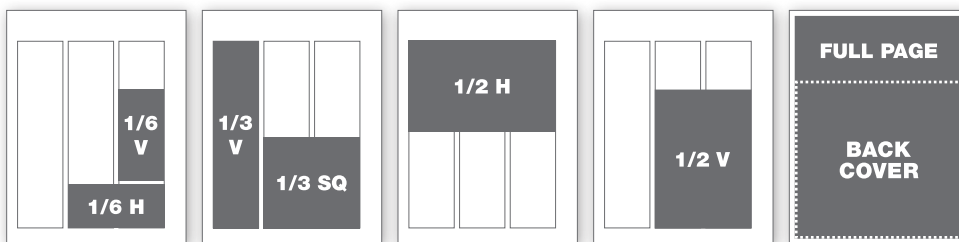
Ad Rates

	1 time	3 times	6 times
Member Rates:			
Black and White			
1/6 horizontal or 1/6 vertical	\$155	\$130	\$110
1/3 vertical or square	\$230	\$190	\$150
1/2 horizontal or vertical	\$430	\$350	\$290
Full-page	\$630	\$510	\$410
Color			
Inside Front Cover	\$730	\$590	\$480
Inside Back Cover	\$730	\$590	\$480
Back Cover	\$830	\$670	\$540

	1 time	3 times	6 times
Member Rates:			
Black and White			
1/6 horizontal or 1/6 vertical	\$210	\$176	\$149
1/3 vertical or square	\$311	\$257	\$203
1/2 horizontal or vertical	\$581	\$473	\$392
Full-page	\$851	\$689	\$554
Color			
Inside Front Cover	\$986	\$797	\$648
Inside Back Cover	\$986	\$797	\$648
Back Cover	\$1,121	\$905	\$729

Magazine trim size: 8.5" w x 11" h | Live area: 8.375" w x 10.875" h

Ad Sizes



1/6 horizontal	4.43" w x 2" h
1/6 vertical	2.1" w x 4.2" h
1/3 square	4.43" w x 4.2" h
1/3 vertical	2.1" w x 8.6" h
1/2 horizontal	6.75" w x 4.2" h
1/2 vertical	4.43" w x 6.38" h
Back Cover	8.0" w x 7.5" h
Full-page	8.25" w x 10.75" h
Full-page + bleed	8.5" w x 11" h +125" bleed