

# Bulletin

## Inside >

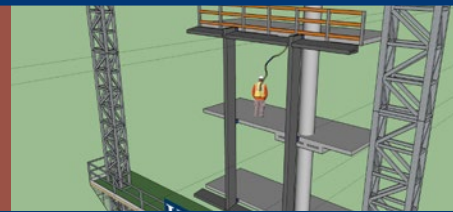
Industry Report.....	3
Chairman Profile.....	9
Technology in Safety.....	11
Fall Kickoff.....	15
Member Projects.....	16
New Members.....	22
WBC Calendar.....	28

The Official Publication of the Washington Building Congress | Oct./Nov. 2017




**WBC Board of Directors 2017-2018**

**Technology in Safety | p. 11**



**2017 Fall Kickoff | p. 15**





**BEFORE YOU CAN  
GET TO WORK,  
WE HAVE TO  
FINISH OURS.**

## **CLEAN EARTH WITH US.**

Recycling over 3.6 million tons of material in 2016, Clean Earth continues to grow with over 25 years of experience treating and recycling contaminated soil for beneficial reuses, including construction fill and brownfield reclamation. It is our unique capability of providing a one-source, full-service solution to handle multiple waste streams from a single customer that separates us from the competition.



**CLEAN EARTH.**

Faster, smarter, greener solutions.®

877.445.DIRT | [www.cleanearthinc.com](http://www.cleanearthinc.com)





# WBC Board of Directors 2017-2018

CHAIRMAN OF THE BOARD  
**Dan Buckley**  
*Anchor Construction Corporation*



CHAIRMAN-ELECT  
**Michael Baruccheri**  
*AECOM Tishman*



VICE CHAIRMAN  
**Chuck Claar**  
*Branch and Associates*



VICE CHAIRMAN  
**Brett Snyder**  
*GreenBench Companies*



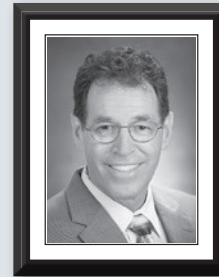
VICE CHAIRMAN  
**W. Emerson Teer**  
*Clark Construction Group, LLC*



TREASURER  
**Patrick Mercer**  
*Siemens Industry, Inc.*



SECRETARY  
**Robert Freas**  
*Exponent*



IMMEDIATE PAST CHAIRMAN  
**Joseph D. Schall, P.E.**  
*Pepco*



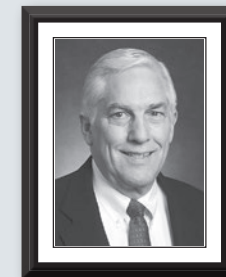
DIRECTOR  
**Ken Ellis**  
*Langan Engineering*



DIRECTOR  
**Julie Forsht**  
*Powersmiths*



DIRECTOR  
**Sean Frazier**  
*HSU Builders*



DIRECTOR  
**Bob Frew**  
*Balfour Beatty Construction*



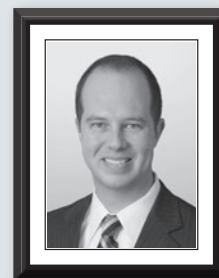
DIRECTOR  
**Christine Heffernan**  
*HESS Construction +  
Engineering Services*



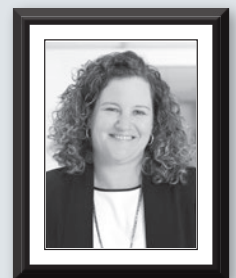
DIRECTOR  
**Mike Holland**  
*Boston Properties*



DIRECTOR  
**Gabriel Jahn, LEED AP**  
*Dynaletric Company*



DIRECTOR  
**Greg Koger**  
*Holland & Knight*



DIRECTOR  
**Tara McCarthy**  
*Page Southerland Page*

# Bulletin

October/November 2017

Washington Building Congress is a nonprofit association made up of professionals from a variety of disciplines, all with an active interest or involvement in the Washington Metropolitan Area's real estate, design, and construction community. The organization was established in 1937 to represent the collective interests of its members by providing education and networking opportunities and by promoting the advancement of the building industry. For additional information about membership, joining a committee or the WBC Bulletin, call (202) 293-5922 or visit us on the web at [www.wbcnet.org](http://www.wbcnet.org).

CHAIRMAN OF THE BOARD

**Dan Buckley**, Anchor Construction

CHAIRMAN-ELECT

**Mike Baruccheri**, AECOM Tishman

VICE CHAIRMAN

**Chuck Claar**, Branch and Associates

VICE CHAIRMAN

**Brett Snyder**, GreenBench Companies

VICE CHAIRMAN

**W. Emerson Teer**, Clark Construction Group, LLC

TREASURER

**Pat Mercer**, Siemens Industry

SECRETARY

**Bob Freas**, Exponent

IMMEDIATE PAST CHAIRMAN

**Joe Schall**, Pepco

DIRECTORS

**Ken Ellis**, Langan Engineering

**Julie Forsht**, Powersmiths

**Sean Frazier**, HSU Builders

**Bob Frew**, Balfour Beatty Construction

**Christine Heffernan**, HESS Construction + Engineering Services

**Mike Holland**, Boston Properties

**Gabriel Jahn**, Dynalectric Company

**Greg Koger**, Holland & Knight

**Tara McCarthy**, Page Southerland Page

PRESIDENT & CEO

**Steven J. Kenton**

ASSOCIATE DIRECTOR

**Rita F. Reis**

EDITOR/DESIGNER

**Frost Miller Group**

Bulletin is published 6 times a year by Washington Building Congress, Inc. The articles in this publication are the opinions of the authors and do not necessarily represent or reflect the policies or opinions of Washington Building Congress. Copyright 2017. All rights reserved.

Washington Building Congress

1100 Vermont Avenue, NW, Suite 700  
Washington, DC 20005  
T: (202) 293-5922 | F: (202) 429-1922  
[www.wbcnet.org](http://www.wbcnet.org)



CONNECT WITH US:



## Chairman's Letter

### Dear Members and Colleagues:



I was honored to take office as the 80th WBC Chairman of the Board on October 1. We started the new membership year off with the excellent Fall Kick-off and installation of officers attended by 260 members and guests at Columbia Country Club. Thank you to everyone who supported this magnificent event and for your ongoing support of the Craftsman Hall of Fame. The association followed up in October with the popular Oktoberfest Networking event at Sauf Haus Bier Hall with over 160 people. We will once again cap off a very eventful 2017 with the WBC Holiday Party at Congressional Country Club on December 12.

I would like to congratulate and welcome to the members of the WBC Board of Directors who were installed at the Fall Kickoff in September. Joe Schall respectfully passed the chairman's gavel off to me during the event. As Immediate Past Chairman, Joe will be serving as chairman of the WBC Foundation and overseeing the WBC Foundation. A very special thank you goes to Joe for his many years of leadership and service to the association. Following are the WBC officers and directors who will be serving our outstanding organization over the next year:

### FY'18 WBC Board of Directors

- |   |  |   |  |
|---|--|---|--|
| <ul style="list-style-type: none"><li>• <b>Dan Buckley</b><br/><i>Chairman of the Board</i><br/>Anchor Construction</li></ul>       | <ul style="list-style-type: none"><li>• <b>Patrick Mercer</b><br/><i>Treasurer</i><br/>Siemens Industry</li></ul>        | <ul style="list-style-type: none"><li>• <b>Sean Frazier</b><br/><i>Director</i><br/>HSU Builders</li></ul>                                    | <ul style="list-style-type: none"><li>• <b>Gabriel Jahn</b><br/><i>Director</i><br/>Dynalectric Company</li></ul>    |
| <ul style="list-style-type: none"><li>• <b>Mike Baruccheri</b><br/><i>Chairman-Elect</i><br/>AECOM Tishman</li></ul>                | <ul style="list-style-type: none"><li>• <b>Bob Freas</b><br/><i>Secretary</i><br/>Exponent</li></ul>                     | <ul style="list-style-type: none"><li>• <b>Bob Frew</b><br/><i>Director</i><br/>Balfour Beatty Construction</li></ul>                         | <ul style="list-style-type: none"><li>• <b>Greg Koger</b><br/><i>Director</i><br/>Holland &amp; Knight</li></ul>     |
| <ul style="list-style-type: none"><li>• <b>Brett Snyder</b><br/><i>Vice Chairman</i><br/>GreenBench Companies</li></ul>             | <ul style="list-style-type: none"><li>• <b>Joe Schall</b><br/><i>Immediate Past Chairman</i><br/>AECOM Tishman</li></ul> | <ul style="list-style-type: none"><li>• <b>Christine Heffernan</b><br/><i>Director</i><br/>HESS Construction + Engineering Services</li></ul> | <ul style="list-style-type: none"><li>• <b>Tara McCarthy</b><br/><i>Director</i><br/>Page Southerland Page</li></ul> |
| <ul style="list-style-type: none"><li>• <b>W. Emerson Teer</b><br/><i>Vice Chairman</i><br/>Clark Construction Group, LLC</li></ul> | <ul style="list-style-type: none"><li>• <b>Ken Ellis</b><br/><i>Director</i><br/>Langan Engineering</li></ul>            | <ul style="list-style-type: none"><li>• <b>Mike Holland</b><br/><i>Director</i><br/>Boston Properties</li></ul>                               |  |
| <ul style="list-style-type: none"><li>• <b>Chuck Claar</b><br/><i>Vice Chairman</i><br/>Branch and Associates</li></ul>             | <ul style="list-style-type: none"><li>• <b>Julie Forsht</b><br/><i>Director</i><br/>Powersmiths</li></ul>                |   |  |

Planning for the 2018 WBC Craftsmanship Awards program started in September. The deadline for submission of entries for the 62st annual event was November 9. On January 11, teams of industry judges will evaluate all entries based upon recognized standards associated with quality craftsmanship. The Craftsmanship Awards program will culminate on Friday, March 16, with the highly anticipated awards banquet recognizing over 400 individual craftsmen and honoring the new Hall of Fame inductees. If you would like serve as a judge, be a sponsor, or view further information regarding Craftsmanship Awards, please visit the WBC website at [wbcnet.org](http://wbcnet.org).

As we move into the new fiscal year, I would also like to take this opportunity to ask that you please renew your WBC membership, if you have not already done so. We will need the support and participation of everyone in order to move forward as a unified group. The membership year runs from October 1 to September 30, and annual renewal payments must be received no later than December 29 for members to be included in the 2018 WBC Industry Index membership directory. Additionally there are many great advertising opportunities still available for the printed directory. If you have questions regarding membership renewal, sponsorship or advertising, please contact Rita Reis at (202) 293-5922.

Finally, the WBC Holiday Party is fast approaching. This extremely popular industry event is scheduled for Tuesday, December 12, at the magnificent Congressional Country Club in Bethesda. Please plan on attending what is generally recognized as the premiere industry holiday event attended by over 700 people.

I look forward to seeing you at an upcoming WBC program or event. Thank you for your ongoing support.

Best regards,

**Dan Buckley**  
*WBC Chairman of the Board*

### WBC Corporate Sponsor





RECENT AWARDS

↓  
ABC 2014, 2016 & 2017  
Masonry Subcontractor  
of the Year

↓  
ABC 2014, 2015, 2016 & 2017  
Safety Training & Evaluation  
Process Award, Gold Level

↓  
WBC 2014 & 2017  
Craftsmanship  
Award

↓  
ASA 2014  
Carson V. Carlisle Jr.  
Safety Award

PARC MERIDIAN  
at Eisenhower Station

Architect:  
Architects Collaborative, Inc.

General Contractor:  
Paradigm Contractors, LLC



# Telligent

## Masonry Construction

2273 Research Boulevard | Suite 550  
Rockville, Maryland 20850  
(301) 926-9600



————— YEARS —————

©Ron Solomon Architectural Photography

T e l l i g e n t M a s o n r y . c o m



## Childress promoted at Gilbane Building Company



David Childress

Gilbane Building Company announced the strategic promotion of **David Childress** to Director of Interiors for their DC/Northern Virginia office.

In this role, Childress will focus on strengthening current client relationships, building new client relationships, and developing a strong interiors team through training and mentorship. While Gilbane is most commonly known for its large base-building work, Childress will leverage Gilbane's strong tenant fit-out portfolio to expand Gilbane's presence in the highly competitive D.C. interiors market.

Childress joined Gilbane as an intern, and has spent the last 12 years as an integral part of Gilbane's growth. Since 2005 he has built higher education facilities, laboratories and hospitals; including the Virginia Tech Signature Engineering Building (Goodwin Hall) and the billion-dollar state-of-the-art Fort Belvoir Community Hospital. David's most recent notable projects include the law offices of Cooley LLP (Reston), BASIS McLean Independent School Repositioning, 1399 New York Avenue Lobby, Verizon Co-Working Space, and the new Zeta Phi Beta National Headquarters. He is excited to continue growing his team's portfolio and their reputation as the most client-focused group in the D.C. Interiors market.

Childress graduated from the Virginia Polytechnic University with a Bachelor of Science degree in civil engineering and will be attending the Executive MBA program at Georgetown University this fall. In 2014 he was awarded the Outstanding Young Undergraduate Alumnus Award from Virginia Polytechnic University for his overall career accomplishments and contributions to the profession and community.

## Uffelman Joins Forrester as VP of Operations



David Uffelman

**David Uffelman** has joined Forrester Construction in the role of Vice President, Operations. With nearly 30 years in the industry and \$2 billion in

completed construction projects during his career, Uffelman has a diverse portfolio ranging from large office building, commercial and government projects to educational facilities, interior renovations and historic preservation work. This experience, combined with his passion for and knowledge of field operations, complements Forrester's mission to offer clients high value-added general contracting, construction management and preconstruction services.

Forrester President Steve Houff said, "By adding David to our team, we are adding experience, knowledge and a resource to support Forrester Operations. His style is very collaborative, which will only help us continue to offer best-in-class client service and help Team Members who work with him to grow."

Houff and Forrester's Executive Committee note that Uffelman shares a strong commitment to the company's core values – teamwork, doing the right thing and making it happen for clients, business partners, Team Members and the community.

## IBEW Local 26 Reaches Historic Milestone

Washington DC's International Brotherhood of Electrical Workers Local Union 26 celebrates 125 years as an Organized Labor Union this Fall at the new MGM National Harbor.

"This celebration is not only for our brotherhood and their families, but for the construction community of customers, vendors, builders and contractors," said Local 26 President Thomas Myers.

The IBEW Local Union 26 celebration called, "American Cities Tour" will be held September 23, 2017 at the new MGM National Harbor. "We hope to excite our membership and prepare our local for the next 125 years," said Business Manager George Hogan.

In 1892, the year IBEW Local 26 got its charter, Washington, D.C. was comprised of dirt roads, cow pastures, and only a few of the monuments that stand today. By 1894, Local 26 members had set the U. S. Capitol building ablaze with lights for the first time in history. 125 years later IBEW is still going strong. This celebration is a testament to all who have worked so hard to make it what it is today.

## Insurance Associates Recognized as a 2017 Top Workplace

Insurance Associates has been awarded a 2017 Top Workplaces honor by *The Washington Post*. The Top Workplaces lists are based solely on the results of an employee feedback survey administered by WorkplaceDynamics, LLC, a leading research firm that specializes in organizational health and workplace improvement. Several aspects of workplace culture were measured, including Alignment, Execution, and Connection, just to name a few.

"Insurance Associates is extremely proud to be named a Top Workplace in *The Washington Post*. This is an honor and it is wonderful to see that so many of our employees are this passionate, engaged, and dedicated to the work that they do at IA," said Stephen A. Spencer, President of Insurance Associates.

Advertise in the  
**Bulletin**  
Call (202) 293-5922  
for more information



## DAVIS Announces 18 Mid-Year Promotions

Recognized by the *Washington Business Journal* as one of the area's "Best Places to Work" for a record-breaking eleven consecutive years, James G. Davis Construction Corporation (DAVIS) recently announced 18 promotions. The newest round of promotions recognizes expertise in operations, safety, and preconstruction.

In 2017, DAVIS has welcomed 29 new hires and 32 interns for the summer. Human Resources Director Jennifer Kessler said, "We're consistently recognized as a Best Place to Work because we've built an environment that fosters the development of exceptional talent. We not only encourage professional growth at DAVIS, but make it a point to recognize it too."

### PROMOTIONS – OPERATIONS

#### Senior Superintendent

- **Todd Fritz**
- **Randy Goldenberg**

#### Superintendent

- **Michael Cavicchia**
- **Christopher Weddle**

#### Project Superintendent

- **Justin Kyriazi**

#### Project Executive

- **Joe Baker**

#### Project Manager

- **Peter Cooke**
- **Haley Kameros**
- **Lalcung Lian**

#### Assistant Project Manager

- **Jason Ellis, LEED Green Associate**

#### Project Coordinator

- **Danielle Smothers**

### PROMOTIONS – NON-OPERATIONS

- **Cole Campbell, Safety Manager, GSP**
- **Zachary de la Cruz, Senior Estimating + Preconstruction Engineer**
- **Andrew Geisert, Senior Safety Manager, CHST, REHS/RS**
- **Jason Kibler, Senior Safety Manager**
- **Callie McLenagan, Estimating + Preconstruction Coordinator**
- **David Wahler, Director – Scheduling Rita Waltz, Senior MEP Manager**

## Vossler Takes the Helm as President of WCS Construction, LLC



D. Scott Vossler

**D. Scott Vossler** was appointed the new President of WCS Construction, LLC, following the retirement of Jim Anglemeyer. WCS Construction, LLC is a DC-based

general contractor, with 84 employees and over 146 million in business last year.

Vossler joined WCS Construction, LLC in 2014 as Vice President. A University of Florida graduate with over 30 years of experience, Scott has overseen and managed mixed-use, commercial, multi-family residential, governmental, educational, retail, and health care projects. He has served in prominent roles at business associations, has been a guest speaker at universities and leadership development groups, and has volunteered in numerous charitable outreach activities. He served as the 2009 Chairman of the Board of Associated Builders and Contractors Metro Washington Chapter, and also served as the Chairman of the Board of CraftMasters Training Trust in 2010. He is currently serving on the Steering Committee for the Skyland Workforce Center, and on the General Contractor Counsel for Associated Builders and Contractors, Virginia Chapter.

"I am honored to have the opportunity to lead the team and am looking forward to making the company stronger," said Vossler, about his appointment. Chris Smith, Chairman and CEO of WC Smith said, "I am confident that Scott will be able to lead WCS Construction, LLC successfully in the next phase of growth."

### Four Join Boston Properties

Boston Properties announced the new hire of **Sharon Clayborne, Claudia Scozia and Micheline Diakite**, all Senior Construction Managers in their Special Projects Group within the firm's Con-

struction Department, and **Erin Cestero** as a Construction Manager also within the Construction Department.

Clayborne comes to Boston Properties from John D Clayborne, Inc. where she was a Vice President, and Tishman Speyer where she was a Director in Project Management. She has 28 years of experience in the general contracting and project management fields, and she is a graduate of the University of South Carolina.

Scozia joins the company from A2 Design, Inc. where she practiced architecture and design for over 10 years. During that time, she also taught at The Art Institute, Catholic and Marymount Universities. Scozia earned her Bachelor of Arts degree in Interior Design at Marymount University and received her Master of Architecture degree from Catholic University.

Micheline Diakite worked at Clark Construction as a Project Manager for eight years and at Sigal Construction for the past four years. She earned her Bachelor of Science degree in Architecture at the University of Virginia and a Master of Science degree in Real Estate Development at Georgetown University.

Cestero was previously with HITT Contracting, where she was a Senior Estimator. Prior to her three years in the general contracting field, she worked for ten years as both a building code and design professional. Cestero earned a Bachelor of Science in Architecture from the University of Virginia.

### Promotions Announced at WCS Construction, LLC

**Kari Luedtke** was recently promoted to Project Manager, and Markee Campbell to Assistant Project Manager, WCS Construction, LLC.

Kari Luedtke joined WCS in 2005 as an Administrative Assistant and worked her way through the ranks ultimately achieving her new position as Project Manager. She is currently managing the THEARC Phase III project in Washington, DC.

**Markee Campbell** joined WCS in 2015 as a Project Engineer and is cur-

rently assisting the WCS project team as Assistant Project Manager at our Archer Park project in Washington, DC. Campbell is a graduate of Marshall University, Huntington, WV with a BBA in Management and a Silver Level Leadership Development Award Recipient with the Associated Builders and Contractors of Metro Washington 2016-2017.

---

## Winmar Announces Additions to its Interiors Team

---

Winmar Construction is proud to expand our current Commercial Interiors Team to include **Jody Beasley, Scott Dychtwald, Chenita Pittman-Holt, Drew Goldbrason, and Andrew Dubuc.** Their wealth of talent and expertise brings over 50+ years of combined commercial interior construction experience.

Jody Beasley is the Vice President of Client Services for Winmar Construction's, D.C. office. He is a seasoned real estate professional with over 15 years of experience in the commercial real estate market. He is skilled in relationship building, business development and project management.

Scott Dychtwald is a Senior Project Manager for Winmar Construction. With over 22 of experience, Scott is well-versed in corporate interiors, industrial, tenant improvement and institutional construction projects. Scott has a number of professional strengths, including effective leadership skills, communication skills, crisis management and a strong commitment to quality.

As Assistant Project Manager, Pittman-Holt provides full time support and reports directly to the Project Manager. Her overall responsibilities include frequent interactions with Owner/Client, consultants, design professionals and contractors.

A former U.S. Marine, Superintendent Goldbrason has 31 years of corporate interiors, multifamily, university, restaurant, airport and government construction projects. His strengths include excellent communication skills, strong leadership, organization and understanding of complex building systems.

Dubuc is a Superintendent for Winmar Construction's D.C. office. With over 32 years of construction experience, Andrew is well versed in university, airport, and government construction projects. Andrew's strengths include excellent communication skills, strong leadership, organization and understanding of complex building systems.

---

## Kelly Named Senior Vice President of Asset Management at Foulger-Pratt

---



Robert Kelly

**Robert Kelly** has been named Senior Vice President of Asset Management for Foulger-Pratt. In this role, Kelly oversees a portfolio consisting of approximately 7

million square feet, valued at approximately \$1.9 Billion. He will manage the development and execution of asset and portfolio-level strategies, focusing on property operations, including management and leasing, acquisitions, debt procurement, reporting, and budgeting.

Kelly more than 20 years of commercial real estate experience with the last decade spent in institutional real estate performing asset management responsibilities for companies such as The Carlyle Group, and Capital One.

---

## DAVIS Hosts 4th Annual Charity Golf Tournament

---

For the fourth consecutive year, DAVIS held their Annual Charity Golf Tournament at Cattail Creek Country Club in Glenwood, MD. They welcomed 131 participants representing 34 subcontractor and industry partners. With the help of generous sponsors over \$60,000 was raised.

This year, the proceeds were donated to two longtime nonprofit partners of DAVIS, Nonprofit Village of Rockville and Special Olympics DC. Nonprofit Village provides affordable office space,

services, and collaboration opportunities to over 30 nonprofit organizations in the DC region. Special Olympics DC offers sports and health programs at no cost to more than 1,600 children and adults with intellectual disabilities in the district.

DAVIS Vice President, Matt Weirich, who also chairs the annual tournament, said, "We have a deep connection to these organizations. DAVIS and our employees have supported them for several years and nothing feels better than presenting them both with a check that I know will support their important work in our communities."

---

## Moreland and Prisaznick promoted at WCS Construction, LLC

---

WCS Construction, LLC, recently announced the promotion of **Ramsay Moreland** to senior project manager and **Tom Prisaznick** to senior superintendent.

Moreland started with WCS Construction in May of 2015 and has been in the construction industry since 2002. He is a graduate of the University of Maryland and is a LEED Accredited Professional. Moreland started his construction career with two years in the field as an assistant superintendent and then phased into project management. The types of projects he has overseen and managed include a high school, office, warehouse and several multi-family projects.

Prisaznick also joined WCS Construction in May of 2015, and has been in the construction industry since 1977. With a total of 35 years of construction experience, Prisaznick has overseen mid/high rise buildings, condominiums, apartments, single, and multi-family housing.



## Ruppert Landscape hires Roles as Frederick, MD Branch Manager



David Roles

**David Roles** has joined Ruppert Landscape as branch manager in the company's Frederick, Maryland landscape management branch.

"We are pleased to welcome Dave to

the Ruppert team and look forward to seeing him apply his wealth of industry knowledge and management skills in his efforts to grow our Frederick branch," said Doug Halsey, region vice president in the company's landscape management division.

Roles holds a degree in landscape management from the University of Maryland's Institute of Applied Agriculture and is a Landscape Industry Certified Technician (CLT) and Maryland Licensed Pesticide Applicator. He has over 20 years of industry experience,

having held positions including account manager, operations manager, supervisor, and most recently as branch manager for other leading landscaping companies. As branch manager in Ruppert's Frederick landscape management branch, he will be responsible for the overall welfare of the branch, including the safety and development of his team, strategic planning and budgeting, training, and day-to-day operations.

## Winmar Construction Hires Nelson



Jeremy Nelson

Winmar Construction recently announced that **Jeremy Nelson** joined the company as a senior project manager.

Nelson's experience includes over 17 years of construction management in the Washington, DC area. His clients

include law firms, government contractors, associations and government affairs. Work experience includes Northrop Grumman's HQ relocation, the British Embassy, Bonner Keirnan Law Offices, Chevy Chase Land Company HQ, Medstar Health, US Customs and Border Protection, Engility, Vencore, National Science Foundation and Dynamics Research Corporation.

## Electrical Alliance Contractors Named 13 of 16 Largest Electrical Contractors in Greater Washington, DC

Electrical Alliance contractors took 13 places on the *Washington Business Journal's* annual ranking of the DC area's largest electrical contractors.

The Electrical Alliance is a cooperative effort between electrical contractors of the Washington, DC Chapter of National Electrical Contractors Association (NECA) and skilled crafts-

**WCS**  
CONSTRUCTION

BUILDING PARTNERSHIPS EXCEEDING EXPECTATIONS

[f](https://www.facebook.com/wcsconstruction) [in](https://www.linkedin.com/company/wcsconstruction) [www.wcsconstruction.com](http://www.wcsconstruction.com)

men of the International Brotherhood of Electrical Workers (IBEW), Local Union 26.

Electrical Alliance contractors on the list (based on 2016 Washington metro-area revenue) included:

- **Power Solutions LLC** – \$209.08 million
- **Dynaletric, An EMCOR Group Inc. Co.** – \$197.77 million
- **J.E. Richards Electric Inc.** – \$166.67 million
- **Rosendin Electric** – \$154 million
- **Freestate Electrical Cos.** – \$141 million
- **Mona Electric Group Inc.** – \$115 million
- **Singleton Electric Co. Inc.** – \$73.9 million
- **PerLectric Inc.** – \$46.99 million
- **Contemporary Electrical Services Inc.** – \$39.95 million
- **Heller Electric Co. Inc.** – \$38.62 million
- **RTL Electric Co. Inc.** – \$21.6 million
- **Total Electric Inc.** – \$16 million
- **Adcock's Systems LLC** – \$14.7 million

The 13 Electrical Alliance contractors on the *Washington Business Journal's* list have worked on large-scale and specialty projects including the African American History and Culture Museum, the Thurgood Marshall Federal Judiciary Building, Presidential Reviewing Stand and many more.

“Our Electrical Alliance contractors offer their customers peace of mind that comes with knowing work performed by our trained electricians will be executed safely and to the highest level of quality,” said Denise Mitchell, executive director, Washington, DC Chapter of NECA. **B**



## Warner Team Participates in Armed Forces Cycling Classic

Warner enjoyed a fantastic weekend being part of the Armed Forces Cycling Classic events this past June in Arlington, VA. Warner was thrilled that the event was renamed to honor the Armed Forces; allowing the opportunity to expand the reach to the entire military community. The company was one of the proud, supporting sponsors of the overall event, sponsored the Mellow Mushroom Women's Pro team, supported the Wounded Warriors Corporate Challenge team by catering their tent, and participated with a bigger than ever team in the Corporate Challenge event on Sunday morning.

The Armed Forces Cycling Classic featured races for licensed racers, including the nation's top Pro/Am men and women in the 20th Annual Clarendon Cup. Additionally, cycling enthusiasts of all abilities were able to participate on Sunday morning's Armed Forces Cycling Classic Challenge Ride in Crystal City, followed by more Men's and Women's Pro/Am races. The proceeds of the race benefitted each group, company, or organization's charity of choice.

Several Warner employees are cycling enthusiasts, and joined forces with guests and clients to take first place in the Fastest Six Top Riders win. Warner was excited to be part of this event, which honors our Armed Forces heroes, for a fourth year in a row.



(Top): Warner Honored to Support the Wounded Warriors Corporate Challenge team; (middle) Warner's 2017 Corporate Challenge Team Celebrates; (bottom) Warner Consultants Executive VP/Chief Operating Office Mark Anderson accepts the "Fastest Six Riders" award for the Armed Forces Corporate Challenge, June 12, 2017



# ANCHOR CONSTRUCTION CORPORATION



**EXCELLENCE,  
OUR BEDROCK FOR SUCCESS**

**Our mission is to form**

"Partnerships resulting in innovative, cost effective and quality construction, exceeding our customers' expectations in a safe environment."



Approved Contractor for:



"Anchor Construction Corporation is Happy to Support the WBC FY' 18 Annual Corporate Sponsorship"

- Florentino Gregorio  
President

*Anchor Construction, a CBE, specializes in utility construction: water, storm, sewer, ductbank, and concrete flatwork restoration. Also, as a general contractor, we perform roadway and bridge construction. Anchor's capability and expertise allow us to build new infrastructure and rehabilitate existing infrastructures.*

Offices in Washington, D.C. & Maryland

Licenses in: VA, MD, DC, DE



WATER





# Dan Buckley elevated to Washington Building Congress's 80th Chairman

## New leader's top goals are membership growth and committee involvement, while keeping an eye toward the future

Incoming Washington Building Congress Chairman, Dan Buckley, is a true Washingtonian—born in Washington, DC 52 years ago—and a long-time member of our region's commercial real estate industry. His first job in the industry was delivering conduit for a local electrical contractor (a WBC member firm) when he was just 15 years old.

Today, Buckley is Senior Vice President at WBC member firm Anchor Construction Corporation, a general contractor specializing in utilities and infrastructure construction for federal, state and local government agencies, private organizations and commercial institutions throughout the Washington, DC and Baltimore metropolitan regions. He also serves as Vice Chair on the National Utility Contractors Association (NUCA) Board of Directors.



Over the past 14 years, Buckley has had a very active role in WBC's committees, Board of Governors and Board of Directors, working his way up through the ranks—now taking on the task of serving as the association's 80<sup>th</sup> Chairman of the Board.

As Chairman, Buckley—and his fellow board members—will focus on two primary goals for the association over the coming year. His first goal is to expand WBC's membership base, in particular among its owner/developer and general contractor member firms.

"Doing so," explained Buckley, "will increase involvement among our subcontractor and associate members."

He continued, "To achieve this, we'll be asking every member firm to recruit just one new member into the WBC."

Increasing active participation in the association's ten committees is the other top priority for Buckley's term in office. He believes that working on a committee gives members the chance to build relationships they can maintain throughout their careers. It also opens up opportunities to serve in leadership positions within the WBC.

"Committees are the best way to utilize your membership," said Buckley. "Forming relationships on the committee level guarantees a strong return on investment for your firm—and helps formulate professional and personal relationships you will have for years to come."

Finally, Buckley plans to look toward the future of the WBC, and will work with the Board to establish a firm and dedicated plan for moving forward over the next three years.

"In the coming months, we'll be having a strategic planning session to set goals and determine the actions needed to achieve them," he said. "And, that includes mobilizing the resources needed to execute these actions."



# Chairman Profile

Buckley and the rest of WBC's 2017-2018 Board of Directors were installed into office during WBC's Fall Kickoff celebration in September. At the event, he enthusiastically accepted his new role and addressed the crowd with the following words:

**F**irst and most importantly, I want to thank my wife Dianne, for her 30 years of supporting me, and therefore indirectly supporting the Washington, DC Construction industry. For the late nights, early mornings, 3 a.m. water main break phone calls, travel away, and the inconsistent Saturday and Sunday work days--Dianne, thank you for your support.

**Second**, my employer, Anchor Construction. Thank you Florentino Gregorio for the support you have given me in the support of this group.

**Third**, I want to thank the 14 Chairpersons that directly preceded me, but especially those that I have developed special relationships with: Joe Schall, John Barron and Tamar McNulty, specifically. Those Chairmen that gave me both an education and guidance: Joel Zingesser, Jim Klein, Jon Kurtis, Paul Mella, Don Owen and Chuck Asmar. And finally, the Chairman who was the first person to encourage me to participate heavily in WBC, Jay Bothwell.

**Fourth**, I would like to thank those who have served with me on the Board. There are too many of you to thank, but I would like to individually thank two of you in particular: Carl Hirlinger, who is leaving the Board after a decade. Carl, thank you for the mentoring. And, Mike Barracheri, our incoming Chairman. Mike, thanks for continued support.

#### Now, on to our mission:

For the past 80 years, the Washington Building Congress has served as a resource to the metropolitan Washington building industry, not only by providing valuable networking opportunities for its members, but by actively shaping the direction of the industry and the city through time.

The Washington Building Congress is a non-political association dedicated to building relationships with and among our members, encouraging collaboration, and working together to advance our industry while representing over 1,000 local members.

WBC is committed to supporting and sustaining the communities in which our members live and work. WBC maintains active and on-going community outreach initiatives and encourages continued member participation. Currently, WBC consists of:

- Board of Directors
- Board of Governors
- Community Services Committee
- Craftsmanship Awards Committee
- Hammerheads Committee
- Innovation Committee
- Marketing & Communications Committee
- Membership Services Committee
- Program & Education Committee
- Regional Development Committee
- Small Business Committee
- Golf Committee

As you may have noticed, there is NO Political Action Committee. And that is by design.

And if you look closer, WBC has two words in it that are quite IRONIC as it pertains to its "non-political" mission.....

Word 1: **Washington**, almost ALWAYS related to politics .....and

Word 2: **Congress**, which is ALWAYS related to politics.

Quite IRONIC, don't you think?

Our group of members is quite different than that OTHER Congress that works in OUR City!

The Washington Building Congress is a Congress that actually works.

With our two Boards, ten Committees, and two—just two—outstanding Staff Members, President Steve Kenton and Associate Director Rita Reis, the WBC gets more accomplished than any other Congress in town.

We are a fully volunteer organization, but an organization that pays off with massive returns. While reviewing the attendee list this evening I highlighted just those individuals or companies that I have conducted business with over my past 14 years of being associated with WBC....and I am proud to say that it was over 30%. That list includes developers, GC's, owners, engineers, multiple types of subcontractors, government agencies, insurance and bonding companies, public utilities, lawyers, and others.

I can honestly say that belonging to the Washington Building Congress has made my work easier, more lucrative, and very self-satisfying.

WBC has consistently maintained a membership renewal rate between 88 -91%. That won't change.

#### This year we have two simple goals:

- 1) To increase membership
- 2) To increase committee participation.

All the Board is asking of you, our membership, is to bring in ONE new member in the next six months—and to have one additional person in your firm join a committee.

My name is Dan Buckley with Anchor Construction, I am your new Chairman at WBC, and I approve this message.

THANK YOU ALL. **B**

# Technology in Safety

Technology is a huge part of day-to-day construction operations, leading to a safer, more predictable, and productive working environment. Many companies, particularly larger ones, recognize the value new tech offers in preventing injuries and thus holding off rising insurance premiums. Using technology protects their biggest asset: their employees. Their efforts to leverage technology reduce lost time for both parties while creating culture of safety within the organization.

**By David Stone, Director, Virtual Construction, HITT Contracting, Inc., and Michael McCaffrey, Vice President, Safety, HITT Contracting, Inc.**

### Reducing risk through technological workflow improvements

The advent of smartphones, tablets, and Internet-of-Things (IoT)-enabled sensors allow the construction industry to leverage data that was previously inaccessible to the field worker.

One such technology is 4D, which at its most basic can be described as a 3D model with the added dimension of time/schedule.

Acting as a time lapse movie of a construction site before it actually gets built, 4D can reveal issues with logistics, safety hazards, or opportunities for improvement. It is also a powerful communication tool for stakeholders, safety leads, and clients to demonstrate in simpler terms the complexity of a project. New integrated applications have allowed live models to inform the schedule and tie to the project management solution, integrating 4D with operations daily activities.

Monitoring workers activity and time on the job is another way technology aids safety. For example, the use of a badging or RFID hard-hat sticker allows superintendents and other managers to monitor the number of hours a person is on the job and how much time elapses between their shifts. This data, in turn,



*Mixed Reality hazard markers*

can be used to proactively manage risk and counsel the worker to reduce risk of injury. A more interactive method that relies on this same approach would be a wearable (e.g. smartwatches, hardhat sensors, or fitness trackers) that can measure employee vital signs and detect potential health risks such as heat stroke and hypothermia.

The combination of these new and existing technologies give field personnel and management new advantages. They are able to track progress, avoid injury from heavy equipment, and reduce injury due to improper ergonomics and fatigue. Use of computer models allow us

to simulate and highlight safety elements that need to be incorporated for each phase or task, such as required equipment, clearances, or other hazards.

### Virtual mockup and augmented reality provide better planning

One of the biggest challenges we have in the field is communicating the construction plan and risk in an effective way. Augmented reality provides a prime solution. By displaying the visual in a head mounted device, field workers are able to see both existing and future conditions of the construction activity.



## Technology and Innovation

The head mounted device is a critical distinction as it allows the worker to be free to perform work without being hampered with a handheld device, such as a smartphone or a tablet. Current devices only fill a fraction of the field of view (FoV), allowing the user to distinguish between model and real world conditions using their peripheral vision as well as other settings.

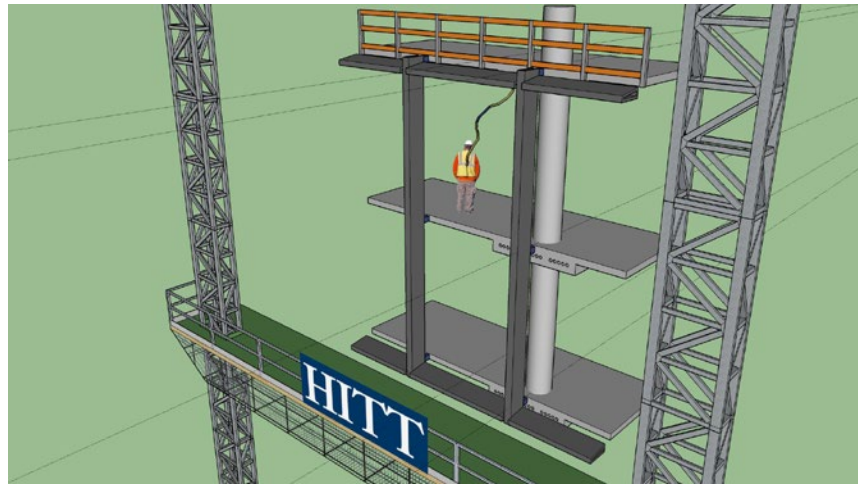
The model can then be used to inform better planning and be overlaid with safety layers of information that are pertinent to the current scope of work. In turn, safety information can be implemented and changed to match field conditions and shared instantaneously with fellow workers.

While this technology is only starting to manifest itself in construction, it is easy to see how it would allow the construction industry to increase awareness and safety using building information models (BIM). Showing hidden conditions like buried utilities, hot work permit zones, or required safety equipment in real time may significantly reduce risk while increasing the information sharing needed to perform work safely.

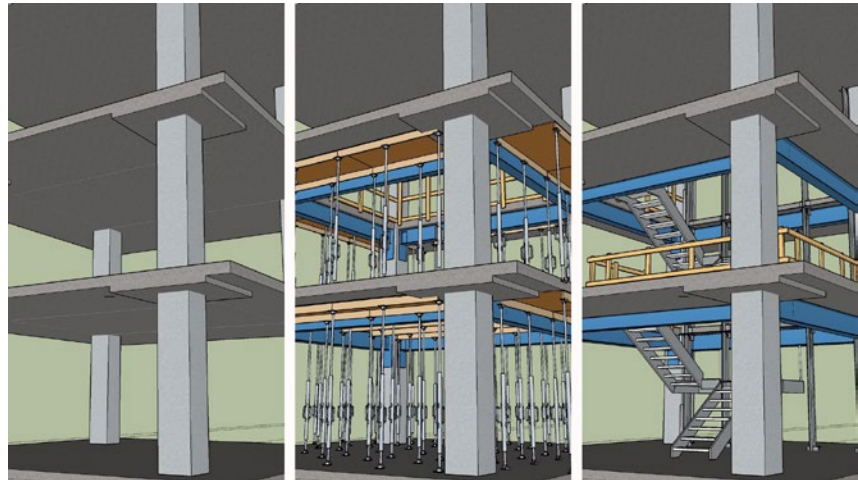
### Preventing worker injury due to repetitive tasks or heavy lifting

Machines have been doing complex repetitive work at a high level in automotive assembly lines and other industries for decades. Used alone, these machines are not nimble enough to know how to work in a live environment with variable conditions. When connected with a human being, though, these devices function as exoskeletons, allowing the wearer to easily lift or use heavy machinery and significantly reducing fatigue and injury in field work. Initially conceived for military purposes and people with spinal injuries, this is also finding its way to construction.

Some in our industry are already benefiting from this technology, including workers who are required to hold heavy grinders or drills overhead for prolonged period of time. By augmenting the worker with an exoskeleton, the tool effectively becomes weightless.



*Curtainwall Virtual MockUp – Safety review*



*Feature stair Virtual MockUp – Safety sequence*

Fatigue can reduce productivity, but more importantly it can lead to serious long term injury. This technology mitigates that risk, keeping employees safe on the job site and assisting them in their everyday tasks.

### Simplifying construction through prefabrication

Prefabrication, essentially the construction industry version of the assembly line, is another area where advancements in technology have improved safety. If there are elements of the building that are repetitive at any scale (e.g. plumbing assemblies, full apartment units) they are prime candidates for being prefabricated in a controlled environment. BIM provides a level of certainty that the prefabricated

elements can be assembled in the field as coordinated, while the controlled environment of prefabrication allows elimination of weather related risks. The combination improves efficiency, quality and most importantly safety.

While technology is prevalent in the construction industry, it is mostly only one step removed from the original typical consumer market use case. We see new trends emerge as advancements are adapted for our industry's specific needs, and we are able to successfully adopting them to resolve some type of pinch point encountered on the job. As this continues, the adoption of new technologies will continue to make construction more efficient, while improving quality, and overall improving safety. **B**





Tree wall window at National Airport.



U.S. Green Building Council lobby.



Living wall at Nixon Peabody.



George Washington University's Science and Engineering Hall.

## Technology and Innovation

# Designing with Nature in Mind

by Ana Ka'ahanui, U.S. Green Building Council

What does nature have to do with building design? Biophilia literally means “love of life” and describes our inherent attraction to the natural world and its systems. Some [studies](#) have shown that those working in environments with access to light, views of nature and biodiversity are more productive and experience enhanced levels of creativity and well-being.

We are lucky to have many examples of biophilic design in the DC metro area. Take for instance Reagan National Airport. Its soaring windows allow for ample daylight and views of the outdoors. Mosaics on its floors reference forms from the animal and plant worlds. Along with the tree-inspired window metalwork, these design elements not only connect the daily travelers to nature, they help to promote a sense of calm and well-being.

Biophilic design expert, researcher and author Judith Heerwagen consulted on the design of the U.S. Green Building Council's LEED Platinum Headquarters. The project uses many natural materials such as lobby walls made from salvaged Sweet Gum Wood from the bottom of the Tennessee River and kitchen furniture made from a local walnut tree. More than 97% of the staff have views of the outdoors from a seated position. A 2-story lobby water feature is a gentle and relaxing reminder of nature.

The DC law firm of Nixon Peabody, LLP has included a 3-story living wall with river rocks at its base to bring nature into the working environment. The wall accents an attractive light-filled internal stairwell which invites use and exercise. The increased air flow in the stairwell also contributes to better indoor air quality.

Academic institutions have recognized that biophilic design can enhance cognitive function and reduce stress. For example, George Washington University's Science and Engineering Hall has an abundance of natural light, 3-story living walls, panoramic views of the outdoors and lots of indoor greenery.

Even in the 1850s Dr. Thomas Kirkbride knew that providing natural light and views of nature would be healing and restorative for his patients at St. Elizabeth's hospital. Medical facilities today continue this tradition by incorporating gardens, waterfalls and water features, green roofs, koi ponds and walking trails into their facility plans, all to connect the patient, their families and staff to nature's benefits.

Given that we spend about [90% of our time indoors](#), it makes sense that we often yearn to be outside. Biophilic design provides the much-needed connection between humans, nature and the built environment. For an in-depth look, check out [Terrapin Bright Green's 14 Patterns of Biophilic Design](#).

*Photos courtesy of U.S. Green Building Council.*



The background is a night-time aerial view of a city with illuminated buildings. A prominent skyscraper on the right is overlaid with a blue wireframe grid. Various digital icons are scattered across the scene: a bar chart, a leaf, a dollar sign, a factory, a CO2 footprint, a lightning bolt, and a Wi-Fi symbol. Lines of binary code (0s and 1s) are also visible, some appearing to flow through the city. In the top left, the Siemens logo and tagline are presented in a white box.

# SIEMENS

*Ingenuity for life*

When smarter buildings  
drive smarter operations,  
that's ingenuity for life.

Transparency is the key to greater energy and operational efficiency. Siemens Navigator powered by Sinalytics acquires and analyzes performance data for every building in your portfolio. The result: Comprehensive insights and powerful analytics combined in an easy-to-use cloud-based platform that tells you exactly what your building needs to deliver peak performance.

[usa.siemens.com/navigator](https://usa.siemens.com/navigator)



## Thank You to Our Fall Kickoff Sponsors!

AECOM Tishman  
Anchor Construction Corporation  
Asmar, Schor & McKenna  
Black & Veatch  
Boatman and Magnani  
CENTRIA  
Clark Construction Group, LLC  
Cohen Seglias Pallas Greenhall & Furman PC  
Dynalectric Company  
ECS Mid-Atlantic  
EDG2, Inc.  
Fox Rothschild  
Greystar Development and Construction  
Grunley Construction Company  
HESS Construction + Engineering Services  
HITT Contracting Inc.  
HSU Builders  
Insurance Associates  
JBG Smith  
Kalkreuth Roofing & Sheet Metal  
Kelly Generator & Equipment  
PCC Construction Components  
PEPCO  
Rippeteau Architects  
Rosendin Electric  
RM Thornton Mechanical  
Siemens Industry  
Telligent Masonry, LLC  
Watt, Tieder, Hoffar & Fitzgerald  
WCS Construction, LLC  
The Whiting-Turner Contracting Company

## Thank You to Our Silent Auction Sponsors!

AECOM Tishman  
Calvert Masonry, Inc.  
Clark Construction Group, LLC  
Forrester Construction Company  
GPR, Inc.  
GreenBench Companies  
Hensel Phelps  
HITT Contracting Inc.  
Honeywell  
JBG SMITH  
Kinsley Construction, Inc.  
McKeever Services Corporation  
McManus & Felsen LLP  
Page Southerland Page  
rand\* construction  
Rippeteau Architects, PC  
Ruppert Landscape  
Scaffold Resource, LLC  
Siemens Industry  
Warner Construction Consultants, Inc.  
Watt, Tieder, Hoffar & Fitzgerald  
WCS Construction, LLC

## 2017 Fall Kickoff





# 2017 Fall Kickoff



# 2018 Annual Sponsors

## CORPORATE SPONSOR



**Anchor Construction**, a CBE, specializes in utility construction: water, storm, sewer, ductbank, and concrete flatwork restoration. Also, as a general contractor, we perform roadway and bridge construction. Anchor's capability and expertise allow us to build new infrastructure and rehabilitate existing infrastructures.

## STEEL SPONSORS



## ALUMINUM SPONSORS



## CONCRETE SPONSORS

Asmar, Schor & McKenna, PLLC  
 Clark Construction Group, LLC  
 Cohen Seglias Pallas Greenhall & Furman PC  
 EDG2, Inc.  
 Grunley Construction Company

Hensel Phelps  
 PCC Construction Components  
 Peckar & Abramson, P.C.  
 Telligent Masonry, LLC  
 Watt, Tieder, Hoffar & Fitzgerald, LLP

## AGGREGATE SPONSORS

Chutes International

ECS Mid-Atlantic, LLC



## Member Projects



Above: *The Draftsman*, Charlottesville, VA; below: *Gilliam Place*, Arlington, VA



**Donohoe Construction Company** recently hosted a “Topping Out” celebration for **The Draftsman**, a 10-story hotel project located on 1106 West Main Street in Charlottesville, VA. This boutique hotel will include 150 guestrooms and suites and is designed to include top tier amenities, such as a penthouse level fitness center, a restaurant and 3,000 square feet of meeting space and a business center. The Draftsman project, which will be the first Charlottesville area project in Donohoe Construction Company’s portfolio, broke ground last August and is expected to reach substantial completion in early 2018.

The historic renovation project, **700 Constitution**, has reached substantial completion. Developed by Urban Structures and Borger Management, the once abandoned hospital, originally built in 1888, was transformed by **Donohoe Construction’s Specialty Division** into a luxury apartment building with 147 units. Designed by Architecture, Inc., 700 Constitution has retained its historic charm but has been revamped with modern day finishes and amenities that include an indoor dog wash, yoga room, below grade parking, rooftop terrace and a business center.

Additionally, **Donohoe Construction** has broken ground on **Gilliam Place**, a 161,330-square-foot affordable housing project off of Columbia Pike in Arlington, VA. A ceremony was held in July to commemorate the new housing project that is dedicated to better serving the Arlington community and is scheduled to reach substantial completion in the spring of 2019.

Developed by Arlington Partnership for Affordable Housing (APAH) in the former site of Arlington Presbyterian Church, Gilliam Place will consist of 173 units, including 11 barrier-free units to assist and meet the needs of persons with disabilities. KGD Architecture has designed the building to achieve Earth-Craft Platinum certification featuring amenity spaces such as, 8,500 square feet of retail/civic use space, a courtyard and 3 levels of below grade parking.



## Member Projects

Skanska has topped out at **2112 Pennsylvania Avenue**, marking the completion of the concrete structure of this highly sustainable, innovative and elegant new building in Washington's central business district.

"It is remarkable to see the project moving closer to its end goal. Now that we have the bones of the building in place, we're excited to see the elegant visual exterior come to life as the work progresses," said Mark Carroll, head of Skanska's real estate development operations in D.C. "It is a significant opportunity to design a building in such a prominent location. Very few new office buildings can boast such a storied neighborhood or such extraordinary views."

Once complete, the 11-story building will host 230,000 square feet of trophy office space. Located on the west side of the central business district just five blocks from the White House, 2112 Penn will also feature 10,000 square feet of street-level retail space, a double volume lobby, a spa-like fitness



700 Constitution, Washington, DC



pepco.com

## POWERING BUSINESSES FOR COMMUNITY GROWTH.

We're committed to providing safe, reliable and affordable energy that local businesses need to help our communities grow.



An Exelon Company

© Pepco, 2017



# WBC Holiday Party

**Tuesday, December 12, 2017**  
**6:00 p.m. to 8:30 p.m.**  
**Congressional Country Club**  
**8500 River Road | Bethesda, MD**  
Business Attire Please - Jacket Required by Club  
Complimentary Valet Parking Provided



Please join WBC Chairman Dan Buckley, member host Stephen Spencer and guests for the premiere industry event of the season, the WBC Holiday Party. Don't miss this great opportunity to come together with friends and colleagues as we enjoy good fellowship and share the cheer of the holiday season.

## Holiday Cheer, Delicious Food, Amazing Dessert and Open Bar.

WBC will be collecting new or used children's books for TURNING THE PAGE. Last year WBC members and their guests donated over 700 high-quality children's books! The Community Services Committee encourages you to pitch in. Let's set a new record!

**Visit [wbcnet.org](http://wbcnet.org) for details!**

# Freestate

## Electrical Companies

Comprehensive Electrical Construction  
and Service

- Commercial
- Government
- Industrial
- Secured Facilities
- Healthcare
- Financial Institutions
- Educational



Toll Free: 866-863-7272  
[www.freestateelectric.com](http://www.freestateelectric.com)

Member of THE ELECTRICAL ALLIANCE

A Powerful Advantage



## Member Projects

facility and a high-end rooftop terrace with views of historic Georgetown, the National Cathedral, U.S. Capitol and the Washington Monument.

**Skanska** announced today that it has achieved the “topping out” milestone at **99M** signaling the last pour on the roof level of the concrete. Located at 99 M Street, SE on the corner of First and M Streets, SE, the striking 11-story 99M is steps from both Navy Yard-Ballpark Metrorail entrances and seven blocks from the U.S. Capitol. It will include approximately 220,000 square feet of office space, with approximately 11,000 square feet of retail/restaurant space on the ground floor. The building will also feature a green roof and rooftop terrace, a tenant-only, state-of-the-art fitness facility, secure bicycle storage and four levels of underground parking.

The **Credit Union National Association** (CUNA) will lease approximately 22,000 square feet of office space on the 3rd floor of Skanska’s 99M development. CUNA will move in the spring of 2018. CUNA will maintain its unique presence, combined with Credit Union House steps from the Capitol, as the only credit union trade organization with offices in Washington, DC.

**Foulger Pratt**, owner and developer, announced today that **Avison Young** has been awarded the exclusive leasing assignment for the office portion of the iconic **Tysons Central development** located in Tysons, VA. Tysons Central’s office component is the epitome of next generation, smart workspace. The 350,000-square-foot, Gensler-designed office tower features 25,365-square-foot to 27,495-square-foot column-free floorplates, an eighth-floor sky lobby, which includes a tenant-exclusive conference facility and outdoor terrace with unobstructed panoramic views of Tysons, and a private roof terrace on the tower floors. The state-of-the-art penthouse fitness center is particularly unique given the location on the top floor of the building, with floor to ceiling windows. The building’s design assures LEED Gold Certification, as well as Wired Score Gold Status. **B**



**A**  
Insurance Associates  
insassoc.com

A full service agency specializing in risk management in the construction industry.

*“HESS has worked with Insurance Associates since 2008 and we continue to be impressed with their attention to detail, responsiveness, and customer focus. They clearly have vast knowledge in their specialty areas, provide focused representation, and always perform in a way that enhances their reputation. They have helped us navigate through numerous matters over the years and have always been an excellent partner with our best interests at heart. We look forward to continuing our partnership with Insurance Associates for many years to come.”*

-Chuck Hess, Chief Executive Officer

**60 YEARS STRONG**

Knowledge / Representation / Reputation



What’s under our hard hat?

COMMERCIAL OFFICE INTERIORS

**GRUNLEY**



## New Members

### AHT Insurance

20 S. King St.  
Leesburg, VA 20175  
p: 703-391-0024  
f: 703-391-0028  
www.ahtins.com

Representatives: **Joseph Engbert, Jennifer Junda**

### Cardno (Structural Engineering)

1881 Campus Commons Dr., Suite 103  
Reston, VA 20191  
p: 703-777-2341  
www.cardno.com  
Representative: **Bob Pronier**

### Diversified

20098 Ashbrook Pl., Suite 150  
Ashburn, VA 20147  
p: 571-207-7109  
www.diversifiedus.com  
Representative: **Rachel Baehr**

### F.H. Paschen

7700 Leesburg Pike, Suite 244  
Falls Church, VA 22043  
p: 773-444-3474  
f: 773-444-5111  
www.fhpassen.com  
Representatives: **Anthony Edwards, William Rocha**

### Ferguson Waterworks

13890 Lowe St., Suite A  
Chantilly, VA 20151  
p: 703-375-6620  
www.ferguson.com  
Representatives: **Jeremy Brutsman, Patrick Burke, Doug Fife, Robert Gilbride, Doug Koenig, Gregory Leonard, Casey Leeper, Gregory Leonard**

### Greystar Development and Construction

8405 Greensboro Dr., Suite 500  
McLean, VA 22102  
p: (703) 639-9984  
www.greystar.com  
Representative: **Brennan Fama**



**SITE PREPARATION  
DEMOLITION  
EXCAVATION**



2851 V Street NE - Washington DC, 20018  
202-882-2600 - FAX 202-882-5330

**PIONEER**  
Cladding & Glazing Systems

**Proud New  
Member  
of the  
WBC**

513.583.5925 - [www.pioneerglazing.com](http://www.pioneerglazing.com)

## New Members

### HKA Global, Inc.

1225 I St., NW, Suite 1275  
Washington, DC 20005  
p: 202-408-3000  
www.hka.com

Representatives: **Dennis Allen, JoAnn Coleman, Wayne DeFlaminis, Tracy Doyle, Shawn Howerton, John McTyre, Chamaiporn (Be) Prompruk**

### Mitsubishi Electric US, Inc. Elevator and Escalator Division

9730-M Martin Luther King Jr. Hwy  
Lanham, MD 20706  
p: 240-495-6003

www.mitsubishielelevator.com

Representatives: **Wendy Donn, Eric Paine**

## New Small Business Members

### Pioneer Cladding and Glazing Systems, LLC

4074 Bethany Rd.  
Mason, OH 45040  
p: 410-737-7777

www.pioneerglazing.com

Representative: **Coleman Jones**

### Quantum Global Solutions

The Summit Building  
8555 16th St., Suite 200  
Silver Spring, MD 20910  
p: 202-717-5556

www.qgs.global

Representative: **Matthew Schofield**

## New Government/Institution Member

### Community Forklift

4671 Tanglewood Dr.  
Edmonston, MD 20781-2430  
p: 301-832-0780

www.communityforklift.org

Representatives: **Nancy Meyer, Jon Zeidler**

### DC Water

5000 Overlook Ave., SW  
Washington, DC 20623  
p: 202-787-4470

www.dewater.com

Representative: **Carlton Ray**

## Full Service Electrical Contractor Specializing in the Following Services:

- 24-hour Emergency Service
- Preventive Maintenance Services
- Infrared Thermography Scan
- Lighting Retrofits
- Estimating/Budget Services
- Mission Critical Facility Maintenance
- Service Contracts
- Generator/UPS Installations
- Design-Build/Assist Capabilities
- 3D Modeling
- Fire Alarm Tenant Fit-out
- Fire Alarm Retrofits of Existing Systems
- Fire Alarm/Sprinkler Testing & Service

Celebrating 50+ Years of Gold Standard Service!



**Dynalectric**

An EMCOR Company

22930 Shaw Road, Suite 100, Dulles, VA 20166

Call: 703-724-3500

Visit: [www.dynalectric-dc.com](http://www.dynalectric-dc.com)



OWINGS, MD  
410.257.5225

COAL CENTER, PA  
800.677.3815

[WWW.KGE.COM](http://WWW.KGE.COM)



## YOUR PREMIUM GENERATOR SUPPLIER

*Generator & Transfer Switch Sales, Planned Maintenance Contracts, Generator Rentals, Replacement Parts, Load Banks, Service, Training.*

Kelly Generator & Equipment, Inc. is the Mid Atlantic distributor for Generac Industrial Power since 1992. We are a coordinated rapid response organization known for offering the proven reliability of a Generac Industrial Power solution, backed by the quality of our service and reliability of our generators. Kelly Generator & Equipment, Inc. strives to provide our customers with quick and professional solutions to their electrical power needs. KG&E operates on three solid principals: Ensure optimum quality in every product sold; professional, honest, straight-forward relationships with our customers; and superior service for the life of our products.



## New Member Descriptions

### AHT Insurance

**AHT Insurance** is a full-service insurance brokerage and consulting firm offering comprehensive support to help identify, manage and transfer risks using an array of products and services.

### Cardno

With offices in Reston, Virginia and Houston, Austin, and San Antonio, Texas, **Cardno** provides comprehensive structural engineering for a broad range of commercial, public and institutional projects. Over the last 40 years, they have earned a reputation of excellence by accomplishing design goals while maintaining project budgets and schedule requirements. Cardno's structural solutions balance practicality with innovation, often applied to difficult sites or unusual building concepts. They work across a broad range of building types, including mixed-use, multi-family, healthcare, mission critical, office, hospitality, industrial, retail, and education as well as laboratories, museums and theaters.

Having engineered millions of square feet from small specialty buildings to multi-building campuses to high-rises, Cardno's role remains the same: to bring architectural designs to reality by exploring multiple structural systems to capture the maximum market value for its clients. Cardno is committed to being a proactive team player in the collaborative process for all phases of building design and construction to successfully meet project goals. Its cost-effective, functional structural designs are readily constructible with little disruption to surrounding sites, as well as flexible to accommodate future needs or connect to existing structures.



## KEEP BUILDING.

*"It's really all about being the best for the team around you. That means staying focused on making the best decisions, thinking about the outcomes for the people that rely on you and working with a genuine passion for what you do."*

**DAN BAKER, LEED AP**  
Face of Forrester Since 2006

Pictured (from left to right):  
Senior Project Managers Dan Baker & Derek DiPiazza

[www.forresterconstruction.com](http://www.forresterconstruction.com)

# New Members

### Community Forklift

**Community Forklift** is a nonprofit building materials reuse center. They accept donations of surplus and salvaged building materials and either make them available to the public at its warehouse thrift-shop or re-donate them to families in need, other non-profits and community groups throughout the Washington, DC metropolitan area.

### Diversified

**Diversified** is an industry leading technology solutions provider delivering innovative digital media, collaborative, broadcasting, electronic security, mission critical, and IT solutions to a global clientele.

### HKA Global, Inc.

With over four decades of experience—from construction and manufacturing to processes and technology—HKA is a leading global consultancy, offering seamless access to advisory, consulting and expert services.

### Mitsubishi Electric US, Inc. Elevator and Escalator Division

Defined by the phrase, Quality in Motion, **Mitsubishi Electric** sets the world's highest standards in elevator and escalator innovation, efficiency, safety and comfort. Widely recognized as the leader in quality, Mitsubishi Electric has been serving the vertical transportation needs of buildings of all types and sizes in the United States since 1985.

### Pioneer Cladding and Glazing Systems, LLC

**Pioneer** is your value-added partner to design, fabricate and install innovative, high quality unitized curtain wall and custom building facades. As one of the nation's premier glazing contractors, we've had the opportunity to partner with many Owners, Architects and General Contractors. What do they tell us about ourselves? We own a project from beginning to end. We contribute creative ideas early in the project to add value to the structure. Our value

engineering orientation allows us to meet design intent while managing a budget. We plan, we schedule, and then we execute to meet our project commitments. We wear the "Project Hat" and not just the "Sub-Contractor Hat" pursuing the best interest of the entire project and not our own narrow agenda. Finally, we're a true partner that collaborates, does what we say we will do, and delivers an exceptional façade – on time, every time.

### Quantum Global Solutions

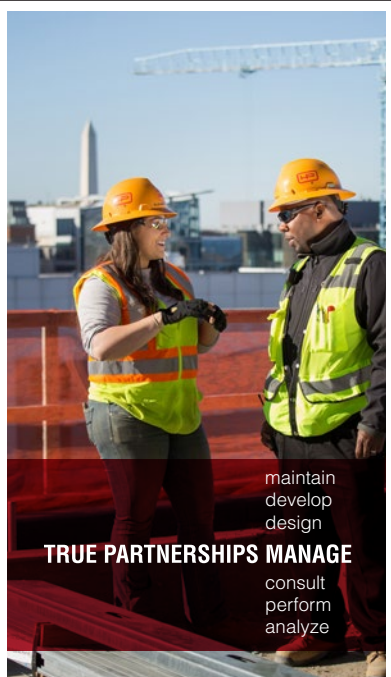
**Quantum Global Solutions** is an independent global contractual, commercial consultancy dedicated to supporting the construction industry to manage their projects and avoid disputes. British founded and managed, Quantum Global Solutions partners with many of the leading contractors, lawyers and employers around the world. **B**



[aecomtishman.com](http://aecomtishman.com)

**AECOM TISHMAN**





**TRUE PARTNERSHIPS MANAGE**

maintain  
develop  
design  
consult  
perform  
analyze



**HENSEL PHELPS**  
Plan. Build. Manage.

Learn more at [henselphelps.com](http://henselphelps.com)

in f @



**ARCHITECTURAL WALL SYSTEMS**

**Design assist specialty contractor supporting the building envelope with custom curtainwall and architectural wall systems.**

7600-C Lindbergh Drive, Gaithersburg, MD 20879  
301.417.1020 | [www.teampcg.com](http://www.teampcg.com)

**BUILT to SUCCEED**

in t f



**COHEN SEGLIAS**  
PALLAS GREENHALL & FURMAN PC  
Attorneys at Law

1828 L Street, NW  
Suite 705  
Washington, DC 20036  
202.466.4110

[www.cohenseglias.com](http://www.cohenseglias.com)  
[www.constructionlawsignal.com](http://www.constructionlawsignal.com)  
[www.fedconblog.com](http://www.fedconblog.com)  
[www.investigationslawblog.com](http://www.investigationslawblog.com)

PENNSYLVANIA NEW JERSEY NEW YORK DELAWARE MARYLAND WASHINGTON, DC KENTUCKY

**THE PRACTICE OF SOLUTIONS**

Construction | Government Contracts  
Real Estate Transactions

Ranked by **Chambers USA** as one of the leading Construction law firms in Washington, DC



**ASMAR | SCHOR  
MCKENNA**

5335 Wisconsin Avenue, NW Suite 400  
Washington, DC 20015  
202-244-4264 ♦ [www.asm-law.com](http://www.asm-law.com)



**ENGINEERING DESIGN GROUP**

**LEADERS** →

MEP Engineering for  
Building Industry

RELIABILITY  
SUSTAINABILITY  
AVAILABILITY

[ISO 9001-2008 Certified]

[www.edg2.com](http://www.edg2.com)

SUCCESS

RESULTS FIRST™



Peckar & Abramson, P.C.

COUNSEL TO THE CONSTRUCTION INDUSTRY

2055 L STREET, N.W.  
WASHINGTON, D.C. 20036  
202.293.8815

NEW YORK, NY • RIVER EDGE, NJ • MIAMI, FL • WASHINGTON, D.C. • LOS ANGELES, CA  
OAKLAND, CA • CHICAGO, IL • AUSTIN, TX • DALLAS, TX • HOUSTON, TX • DEVON, PA  
[WWW.PECKLAW.COM](http://WWW.PECKLAW.COM)



Keeping the legal side  
of your industry  
in perspective  
while you soar  
to new heights

**BUILDING SOLUTIONS™**  
**WATT TIEDER**  
 WATT, TIEDER, HOFFAR & FITZGERALD, L.L.P.  
[www.watttieder.com](http://www.watttieder.com)

**BUILDING  
WASHINGTON  
FOR OVER  
A CENTURY**

**CLARK  
CONSTRUCTION**

**Fox Rothschild** LLP  
 ATTORNEYS AT LAW



**Experienced Construction  
Litigation Attorneys and  
Trusted Business Advisers in the  
Private and Federal Arenas**

*Proud Sponsors of the  
Washington Building Congress*

**Reggie Jones**  
 Construction Partner  
 Chair, Federal Government Contracts Practice  
 202.461.3111 | [rjones@foxrothschild.com](mailto:rjones@foxrothschild.com)

**Dirk Haire**  
 Construction Partner  
 202.461.3114  
[dhaire@foxrothschild.com](mailto:dhaire@foxrothschild.com)

**Doug Hibshman**  
 Construction Partner  
 202.461.3113  
[dhibshman@foxrothschild.com](mailto:dhibshman@foxrothschild.com)

**Nick Solosky**  
 Construction Partner  
 202.696.1460  
[nsolosky@foxrothschild.com](mailto:nsolosky@foxrothschild.com)

**FOOD & FRIENDS®**

219 Riggs Rd., NE  
 Washington, DC

Help prepare and package, meals for and delivers meals and groceries to more than 1,400 people living with HIV/AIDS, cancer and other life-challenging illnesses throughout the Washington area.

*Please register directly  
 through Food & Friends at  
[foodandfriends.org](http://foodandfriends.org)*



# WBC Calendar & Advertising Information

## Events Calendar

### December 2017

- **December 8**  
Craftsmanship Judge Sign-Up Deadline
- **December 12**  
Holiday Party  
Congressional Country Club, Bethesda, MD

### January 2018

- **January 11**, 8:00 am to 4:30 pm  
Craftsmanship Awards Judging Day  
Maggiano's Little Italy Restaurant,  
McLean, VA
- **January 11**, 4:30 pm to 7:00 pm  
Winter Networking  
Maggiano's Little Italy Restaurant,  
McLean, VA

### February 2018

- **February 9**  
Craftsmanship Awards Sponsorship  
Deadline

### March 2018

- **After March 1**  
Craftsmanship Awards Banquet Price  
Increase
- **March 8**  
Craftsmanship Awards Banquet Deadline
- **March 16**, 6:00 to 10:00 pm  
Craftsmanship Awards Banquet  
Marriott Wardman Park Hotel  
Washington, D.C.

## Editorial Calendar

The **Bulletin** covers issues of importance to the building industry, news about WBC members and information about upcoming events. The topics listed below will be covered as feature articles in upcoming issues of the **Bulletin**. Persons interested in contributing information or advertising should contact WBC before the 15th of the first month of each two-month issue (for example, content for the February/March issue would be due February 15th). The **Bulletin** is published six times a year by WBC. To place an ad, submit material or for more information call **(202) 293-5922**.

### October/November

WBC Leadership & Committees

### December/January

Member Charitable Giving

### February/March

Innovation & Technology

### April/May

Craftsmanship Awards & Hall of  
Fame

### June/July

Rebuilding Together Workday

### August/September

Marketing & Business  
Development

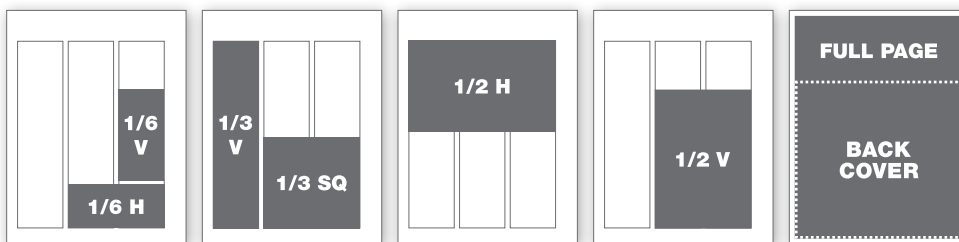
## Ad Rates

	1 time	3 times	6 times
<b>Member Rates:</b>			
<b>Black and White</b>			
1/6 horizontal or 1/6 vertical	\$155	\$130	\$110
1/3 vertical or square	\$230	\$190	\$150
1/2 horizontal or vertical	\$430	\$350	\$290
Full-page	\$630	\$510	\$410
<b>Color</b>			
Inside Front Cover	\$730	\$590	\$480
Inside Back Cover	\$730	\$590	\$480
Back Cover	\$830	\$670	\$540

	1 time	3 times	6 times
<b>Member Rates:</b>			
<b>Black and White</b>			
1/6 horizontal or 1/6 vertical	\$210	\$176	\$149
1/3 vertical or square	\$311	\$257	\$203
1/2 horizontal or vertical	\$581	\$473	\$392
Full-page	\$851	\$689	\$554
<b>Color</b>			
Inside Front Cover	\$986	\$797	\$648
Inside Back Cover	\$986	\$797	\$648
Back Cover	\$1,121	\$905	\$729

Magazine trim size: 8.5" w x 11" h | Live area: 8.375" w x 10.875" h

## Ad Sizes



1/6 horizontal	4.43" w x 2" h
1/6 vertical	2.1" w x 4.2" h
1/3 square	4.43" w x 4.2" h
1/3 vertical	2.1" w x 8.6" h
1/2 horizontal	6.75" w x 4.2" h
1/2 vertical	4.43" w x 6.38" h
Back Cover	8.0" w x 7.5" h
Full-page	8.25" w x 10.75" h
Full-page + bleed	8.5" w x 11" h +125" bleed



# Formulated for the **Future of Glass**

PPG's former flat glass business unit was acquired by Vitro Glass to form North America's largest glass producer. Now, with an exclusive focus on glass, we're making investments to expand capabilities and capacity. Yet, there are some things that won't change.

- **Same Products** from the **Same Plants**
- **Same Technology** and **Distribution**
- **Same People**

**Vitro and PPG. The same, but better.**

That's why we're Formulated for the Future of Glass.



**Local contact and WBC member:**  
**George Sultage**  
*Senior National Architectural Manager*  
412-400-2920  
gsultage@vitro.com



**Vitro Architectural Glass**  
vitroglazings.com  
1-855-VTRO-GLS (887-6457)