

IN THIS ISSUE: Meet the Chairman page 11

Bulletin

THE OFFICIAL PUBLICATION OF THE WASHINGTON BUILDING CONGRESS

WBC 2019-2020 Board of Directors



- 6** Industry Report
- 11** Meet the Chairman
- 14** Fall Kickoff
- 16** Technology & Innovation
- 23** Member Projects
- 27** New Members
- 29** Calendar of Events

Canon

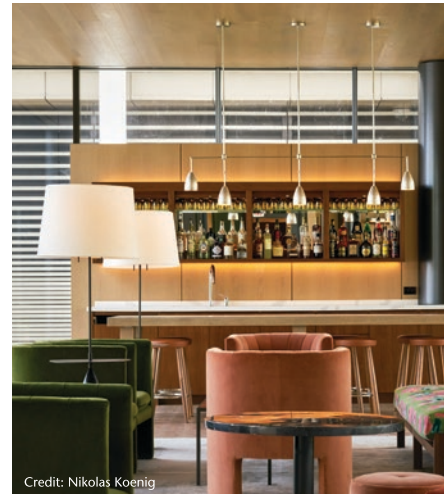
A TESTIMONIAL TO EXCELLENCE



Credit: Binyan Studios



Credit: Binyan Studios



Credit: Nikolas Koenig



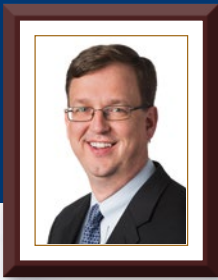
CAPITOL
WOODWORK

Premium Grade Architectural Woodwork and Casework

Acoustical Wall and Ceiling Treatments

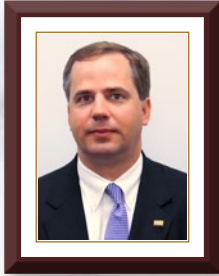
Hospital and Laboratory Casework and Lockers

Architectural Metal, Stone and Solid Surfacing

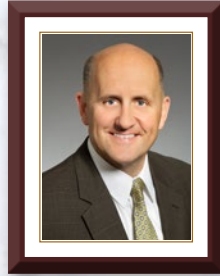


WBC 2019-2020 Board of Directors

Chairman of the Board
Brett Snyder
GreenBench Companies



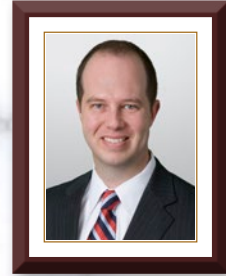
Chairman-Elect
W. Emerson Teer
DPR Construction



1st Vice Chairman
Chuck Claar
R. W. Murray Co.



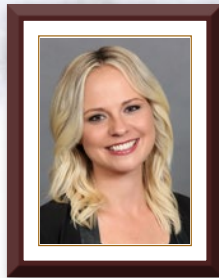
2nd Vice Chairman
Robert Freas
Exponent



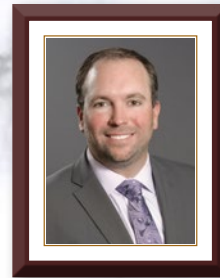
3rd Vice Chairman
Greg Koger
Holland & Knight



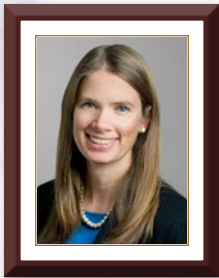
Treasurer
Mike Holland
Boston Properties



Secretary
Christine Heffernan
HESS Construction



Immediate Past Chairman
Michael Baruccheri
AECOM Tishman



DIRECTOR
Karen Cotton
HITT Contracting



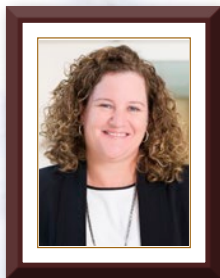
DIRECTOR
Ken Ellis
RK&K



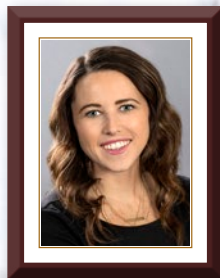
DIRECTOR
Sean Frazier
Datum Contracting East



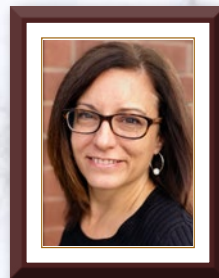
DIRECTOR
Greg LaRosa
Dynalectric Company



DIRECTOR
Tara McCarthy
Gael Force Consulting



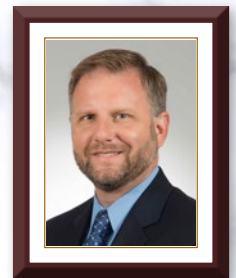
DIRECTOR
Kelly McGuire
Ruppert Landscape



DIRECTOR
Melissa Nelson
EMG



DIRECTOR
Dave Singleton
Singleton Electric Company



DIRECTOR
Rob Wenger
WCS Construction

C

hairman's letter

WBC Corporate Sponsor



Fox Rothschild LLP
ATTORNEYS AT LAW

CHAIRMAN OF THE BOARD

Brett Snyder, *GreenBench Companies*

CHAIRMAN-ELECT

W. Emerson Teer, *DPR Construction*

1ST VICE CHAIRMAN

Chuck Claar, *R.W. Murray Company*

2ND VICE CHAIRMAN

Bob Freas, *Exponent*

3RD VICE CHAIRMAN

Greg Koger, *Holland & Knight*

TREASURER

Mike Holland, *Boston Properties*

SECRETARY

Christine Heffernan, *HESS Construction*

IMMEDIATE PAST CHAIRMAN

Mike Baruccheri, *AECOM Tishman*

DIRECTORS

Karen Cotton, *HITT Contracting*

Ken Ellis, *RK&K*

Sean Frazier, *Datum Contracting East*

Greg LaRosa, *Dynaletric Company*

Tara McCarthy, *Gael Force Consulting*

Kelly McGuire, *Ruppert Landscape*

Melissa Nelson, *EMG*

Dave Singleton, *Singleton Electric Company*

Rob Wenger, *WCS Construction*

PRESIDENT & CEO

Steven J. Kenton

ASSOCIATE DIRECTOR

Rita F. Reis

Washington Building Congress is a nonprofit association made up of professionals from a variety of disciplines, all with an active interest or involvement in the Washington Metropolitan Area's real estate, design, and construction community. The organization was established in 1937 to represent the collective interests of its members by providing education and networking opportunities and by promoting the advancement of the building industry. For additional information about membership, joining a committee or the WBC Bulletin, call (202) 293-5922 or visit us on the web at www.wbcnet.org.

Bulletin is published 6 times a year by Washington Building Congress, Inc. The articles in this publication are the opinions of the authors and do not necessarily represent or reflect the policies or opinions of Washington Building Congress. Copyright 2019. All rights reserved.



1100 Vermont Avenue, NW, Suite 700, Washington, DC 20005
T: (202) 293-5922 • F: (202) 429-1922 • www.wbcnet.org



I was honored to take office as the 82nd WBC Chairman of the Board on October 1. We started the new membership year off with the outstanding Fall Kickoff at Columbia Country Club September 26. Thank you to everyone who supported this great event and for your ongoing support of the WBC Foundation. The association followed up in October with over 170 people enjoying the Oktoberfest event at Dacha Beer Garden. Coming up on November 21 is the Data Center Panel evening program and reception at the Sheraton Tysons Hotel. We will cap off another very eventful year with the WBC Holiday Party at Congressional Country Club on December 10.

I would like to congratulate and welcome the members of the FY'20 WBC Board of Directors who were installed at the Fall Kickoff. Mike Baruccheri graciously passed the chairman's gavel off to me during the event. As Immediate Past Chairman, Mike will be serving as chairman of the WBC Foundation and the Past Chairman's Council. A very special thank you goes to Mike for his many years of leadership and service to the association. Listed on the right are the WBC officers and directors who will be serving our exceptional organization over the next year:

Planning for the 2020 WBC Craftsmanship Awards & Hall of Fame started in September. The deadline for submission of entries for the 64th annual program is November 14. On January 9, teams of volunteer judges will evaluate all entries based upon recognized standards associated with quality craftsmanship. The Craftsmanship Awards program will culminate on Friday, March 13, with the sensational awards banquet recognizing over 400 individual craftsmen and honoring the new Hall of Fame inductees. If you would like to serve as a judge, be a sponsor, or access further information regarding Craftsmanship Awards, please visit the WBC website at wbcnet.org.

As we move into the new membership year, I would also like to take this opportunity to ask that you please renew your WBC membership, if you have not already done so. We need the active support and participation of everyone in order to move forward on a unified front. The membership year runs from October 1 to September 30, and annual renewal payments must be received no later than December 31 for members to be included in the 2020 WBC *Industry Index* membership directory. Additionally, there are many great advertising opportunities still available for the printed directory. If you have questions regarding membership renewal, sponsorship or advertising, please contact Rita Reis at (202) 293-5922.

Finally, the WBC Holiday Party is fast approaching. This widely popular industry event is scheduled for Tuesday, December 10, at the magnificent Congressional Country Club in Bethesda. Please plan on attending what is widely recognized as the premiere industry holiday event of the season attended by over 700 people.

I look forward to seeing you at an upcoming WBC program or event. Thank you for your ongoing support.

Best regards,

Brett Snyder
WBC Chairman of the Board



FY'20 WBC Board of Directors

- **Brett Snyder**
Chairman of the Board
GreenBench Companies
- **W. Emerson Teer**
Chairman-Elect
DPR Construction
- **Chuck Claar**
1st Vice Chairman
R. W. Murray Company
- **Bob Freas**
2nd Vice Chairman
Exponent
- **Greg Koger**
3rd Vice Chairman
Holland & Knight
- **Mike Holland**
Treasurer
Boston Properties
- **Christine Heffernan**
Secretary
HESS Construction
- **Mike Baruccheri**
Immediate Past Chairman
AECOM Tishman
- **Karen Cotton**
Director
HITT Contracting
- **Ken Ellis**
Director
RK&K
- **Sean Frazier**
Director
Datum Contracting East
- **Greg LaRosa**
Director
Dynaletric Company
- **Tara McCarthy**
Director
Gael Force Consulting
- **Kelly McGuire**
Director
Ruppert Landscape
- **Melissa Nelson**
Director
EMG
- **Dave Singleton**
Director
Singleton Electric Company
- **Rob Wenger**
Director
WCS Construction

↓
ABC 2018, 2017, 2016,
& 2014
Masonry Subcontractor
of the Year

↓
ABC 2018, 2017, 2016,
2015, & 2014
Safety Training &
Evaluation Process Award,
Gold Level

↓
WBC 2019, 2017, & 2014
Craftsmanship
Award Winner

↓
ASA 2014
Carson V. Carlisle Jr.
Safety Award

↓
ABC National 2018 & 2017
Excellence In Construction
Eagle Award Winner

↓
WBC 2019
Star Award

HARBOR EAST

Architect:
Hickok Cole Architects

General Contractor:
Bozzuto Construction Company

Telligent

Masonry Construction



T e l l i g e n t M a s o n r y . c o m

2273 Research Boulevard | Suite 550 | Rockville, Maryland 20850 | (301) 926-9600



Industry Report

DAVIS Announces Company-Wide Promotions

Recognized by the Washington Business Journal as one of the area's "Best Places to Work" for 13 consecutive years, James G. Davis Construction Corporation (DAVIS) recently announced 25 promotions.



Andrew Geisart

"Providing excellence in service to our clients and partners starts with investing in our DAVIS team," stated Jim Davis, President + CEO. "We're so happy to announce these well-deserved promotions recognizing the achievements and potential of our employees!"



Jason Kibler

Solidifying safety as the company's first priority, former Senior Safety Managers **Andrew Geisert** and **Jason Kibler** have both been named Director of Safety. In addition to managing the overall safety of DAVIS projects, they'll each special-



Dave Chandler

ize in environmental hazards that can affect project sites—Kibler in asbestos and lead abatement, and Geisert in soil contamination and erosion. Both will work with groups across the company to plan and implement progressive, new safety measures. **Dave Chandler** will continue to lead the safety department as Vice President.

PROMOTIONS – OPERATIONS Senior Superintendent

- **Matt Schall**

Superintendent

- **Jose Murillo**
- **William Ortiz**
- **Remberto Rodriguez**
- **Angel Saavedra**

Project Superintendent

- **Joe Salzano**
- **Project Manager**
- **Neil Gallagher**
- **Brantlee Jobe**
- **Robert Shekletski**, LEED Green Associate
- **Kaidy Wollman**
- **Nyema Wolo**

Assistant Project Manager

- **Spencer Garrett**
- **Grant Gheer**

PROMOTIONS – NON-OPERATIONS

- **Andrew Geisert** – Director, Safety
- **Jason Kibler** – Director, Safety
- **Ed Launt** – HelpDesk Supervisor
- **Greg Munson** – Senior Manager, Office Services
- **Ghansham Persaud** – Information Systems Engineer
- **Korey Price** – Estimating Manager
- **Allen Ray** – Senior Preconstruction Manager
- **Shayna Rice** – Recruiter
- **Shukria Shawqi** – Education Coordinator
- **Billy Suter III** – Senior Estimating Manager
- **Allison White** – Senior Quality Manager
- **Cheyenne Williams** – Senior Financial Accountant

Frank, Wolin and Oberst Promoted at Donohoe

Donohoe Construction Company is pleased to announce the promotion of **Ken Frank** to the position of Vice President, **Lance Wolin** to the position of Senior Vice President and **Ted Oberst** to the position of Project Executive.



Ken Frank

In his new role, Frank will be supporting all operations staff through estimating, scheduling, and site logistics. Since joining the company in 2014, he has

worked on notable projects including The Clifton, Glover House, and Insignia on M. Frank holds a Bachelor of Science in business management from University of Phoenix. He is LEED Accredited Professional Building Design + Construction certified by the Green Building Certification Institute and he is an Accredited Project Management Professional.



Lance Wolin

Wolin will be working closely with the estimating and preconstruction teams to provide the Operations input into planning, site logistics, General Construction costs, phasing, scheduling, and scope coordination. Wolin has been with Donohoe Construction for 14 years. He has worked on several notable projects, including The Wharf – Parcel 5 Hotels, Gallery Bethesda II, VITA Tysons, and Capitol View on 14th. Lance is responsible for organizing several community service events, including the barn refurbishment project at Madison Fields. He is a board member at Rebuilding Together Montgomery County and a Leadership Montgomery CORE Graduate, Class of 2019. He holds a Bachelor of Science from the University of Maryland and is LEED Accredited Professional Building Design + Construction certified by the Green Building Certification Institute.



Ted Oberst

As Project Executive, Oberst is now involved with every facet of the projects to which he is assigned, from contract negotiations to closeout. He is responsible for overseeing all operations conducted by his project teams. He first joined the company in 2001 in the Specialty construction division. He moved over to work in the large construction division in 2005, where he has worked

Industry Report

on notable projects including Gallery Bethesda II, Flats 8300, and Camden South Capitol. Oberst holds a Bachelor of Science in mechanical engineering from Rochester Institute of Technology, an associate's degree in applied science from Alfred State, SUNY College of Technology. He is LEED Accredited Professional Building Design + Construction certified by the Green Building Certification Institute.

Fox Welcomes Falk in Federal Government Contracts and Litigation Groups



Sara Falk

Fox Rothschild recently hired **Sara Falk** as an associate in the Washington, DC office. Prior to joining the firm, Falk was agency counsel at the U.S. Department of Education

where she defended the Department in contract litigation matters and advised on a wide range of contractual issues.

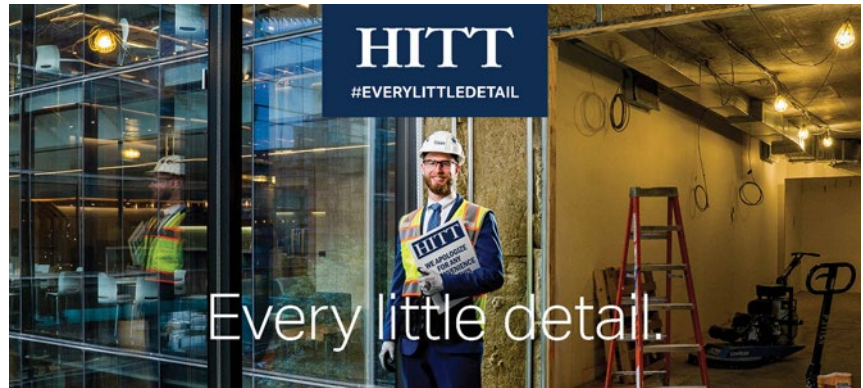
THE PRACTICE OF SOLUTIONS

Construction | Government Contracts
Real Estate Transactions

Ranked by **Chambers USA** as one of the leading Construction law firms in Washington, DC



5335 Wisconsin Avenue, NW Suite 400
Washington, DC 20015
202-244-4264 ♦ www.asm-law.com



Every little detail.



Our **projects** are your **visions**

King of Prussia Town Center



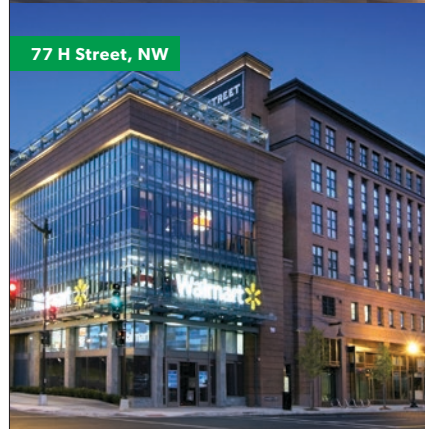
PLANNING

DEVELOPMENT

CONSTRUCTION

PORTFOLIO MANAGEMENT

77 H Street, NW



Georgetown Day School Campus Consolidation



www.greenbenchcos.com

Industry Report

Insurance Associates, a Marsh & McLennan Agency LLC Company (MMA) Proudly Supports Patriot Point



Insurance Associates/MMA and the Selective Insurance Group Foundation partnered to support the efforts of Patriot Point through a \$1,000 grant. Patriot Point was selected by Insurance Associates/MMA for the grant as part of the Selective “President’s Club Matching Gift” initiative, which allows premier agents the opportunity to make an impact in the communities where they live and work by providing a donation with matching gift from the Foundation.

The President’s Club Matching Gift program is run by the Selective Insurance Group Foundation which is a philanthropic affiliate of Selective Insurance Group, Inc. Together with President’s Club agencies, such as Insurance Associates/MMA, the Foundation has supported thousands of community-based and national non-profits in regions across the country since the initiative began in 2002.

The grant represents a \$500 donation from Insurance Associates/MMA, matched by a \$500 gift from The Selective Insurance Group Foundation. The grant will help Patriot Point’s efforts to provide a relaxing and safe environment for our nation’s wounded, ill, and injured service members to enjoy outdoor recreation activities with their families.

EDG² ENGINEERING DESIGN GROUP

LEADERS → MEP Engineering for Building Industry

RELIABILITY
SUSTAINABILITY
AVAILABILITY

www.edg2.com

[ISO 9001:2015 Certified]

CARLTON FIELDS

We’ve built a powerful, full-service, nationally ranked construction practice

Building on a foundation of strength, Carlton Fields’ construction law practice deepens its bench with the arrival of preeminent construction and government contract lawyers **Joseph McManus, Daniel Felsen, James Carney, David Butzer, and Dale Ellickson.**

With seven lawyers and alumni who are American College of Construction Lawyers Fellows, Carlton Fields is among the elite firms serving the construction industry.

From project inception to closeout, our construction lawyers are uniquely positioned to guide clients in all aspects of construction and government contracting.



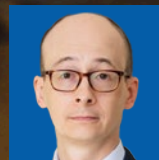
Joseph McManus



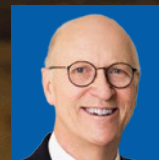
Daniel Felsen



James Carney



David Butzer



Dale Ellickson

Atlanta • Hartford • Los Angeles • Miami
New Jersey • New York • Orlando • Tallahassee • Tampa
Washington, D.C. • West Palm Beach

www.carltonfields.com

Industry Report

Kelly Generator & Equipment, Inc. Promotes Wilson to VP of Operations



Sandy Wilson

Kelly Generator & Equipment, Inc. recently announced the promotion of **Sandy Wilson** to Vice President of Operations.

As a Maryland native, Wilson began her office management skills over 30 years ago in the Mortgage Industry with Clark Financial Services Inc., providing mortgage financing solutions and working closely with reputable worldwide banks and local banks within the community. Wilson joined KG&E in 2008. Within six months, she was promoted to the Rental Coordinator position and shortly thereafter, promoted again to Rental Manager, coordinating and assisting with deployment of overseas operations in Afghanistan, Hurricane Sandy and many other operations.

Wilson has been the Executive Assistant of KG&E and the Office Manager from 2012 to 2019, as well as becoming a member of the Executive team in 2012. Her promotion to Vice President of Operations is the first in the company's history and is dictated by the current and future growth of the company.

Ruppert Landscape Hires Schoffstall as Regional Irrigation Manager



Scott Schoffstall

Ruppert Landscape welcomed **Scott Schoffstall** as regional irrigation manager in the company's landscape management division.

Schoffstall graduated from Old Dominion University with a Bachelor of Science in Business Administration (BSBA) degree and is a 30-year green industry veteran. He is an active member of the Irrigation

Association and is both a Certified Irrigation Technician (CIT) and Certified Landscape Irrigation Auditor (CLIA). He brings a wealth of experience and diverse irrigation background spanning the commercial, residential, and golf course market segments. Most recently, he managed irrigation operations across multiple branches for a large landscape organization in Northern Virginia. He currently resides in Lovettsville, VA with his family.

Jochum Joins Smith Pachter McWhorter as a Member of its Government Contracts Group, Hadzimuratovic and Bolinger Join as Associate Attorneys

Smith Pachter McWhorter PLC announced that experienced government contracts attorney **Elizabeth N. Jochum** has joined the firm as a partner. The firm also announced the addition of two associate attorneys, **Haris Hadzimuratovic** and **Jacob Bolinger**.



Elizabeth N. Jochum

Jochum augments the firm's existing capabilities, adding extensive experience in bid protests and other government contracts litigation, as well as government contracts-related investigations and white-collar defense. She counsels prime contractors and subcontractors on a variety of matters in federal government contracting, including regulatory compliance, contract negotiation, request for equitable adjustment and certified claim preparation, due diligence for mergers and acquisitions, and enforcement defense.



Haris Hadzimuratovic

Hadzimuratovic is a graduate of Vanderbilt University Law School and did his undergraduate work at Princeton University.

- est. 1992 -

GOLDIN & STAFFORD

202-882-2600
Info@GoldinandStafford.com

WWW.GOLDINANDSTAFFORD.COM

EXCAVATION SITE PREPARATION DEMOLITION

Industry Report

His experience includes commercial litigation, investigations and regulatory matters and client counseling. Hadzi-muratovic is a member of the bars of Illinois and the District of Columbia.



Jacob Bolinger

Bolinger is a cum laude graduate of Washington and Lee University School of Law and did his undergraduate work at Eastern Washington University. Before joining the firm, he served as a law clerk on the Virginia Court of Appeals for the Honorable Robert J. Humphreys. Bolinger also has prior experience as a Project Management Consultant in scheduling and earned value management systems reporting and compliance on large government contracts.

Scaffold Resource Announces Employee Updates



Gabriel Jenkins

Gabe Cisneros

Gabriel Jenkins was recently hired by Scaffold Resource LLC as an assistance project manager. In addition, **Gabe Cisneros** was recently promoted to design and fabrication coordinator.

Several others at Scaffold Resource were named Employees of the Quarter, including:

- **Ron McKinney**, Field Operations
- **Rob Flury**, Estimating
- **Tonya Brown**, Administration
- **Gary Mongue**, Hoist/Fabrication Shop
- **Bruce "Kali" Jefferson**, Warehouse/ Yard and Driver. [F](#)

Building What Matters



2112 Pennsylvania Avenue, NW



Lafayette Elementary School



D.C. Water Administrative Headquarters


usa.skanska.com



A
TRADITION
OF
EXCELLENCE
SINCE 1960

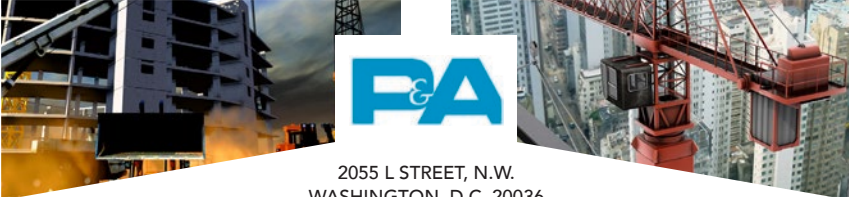
MGM Casino
National Harbor




BOATMAN AND MAGNANI, INC.

TERRAZZO ■ MARBLE ■ TILE ■ MOSAICS ■ STONE ■ GRANITE ■ SLATE

600 Ritchie Road, Capitol Heights, MD 20743 P: 301.336.7700





2055 L STREET, N.W.
WASHINGTON, D.C. 20036
+1 202 293 8815

Peckar & Abramson, P.C.

C O U N S E L T O T H E C O N S T R U C T I O N I N D U S T R Y

NEW YORK, NY • RIVER EDGE, NJ • MIAMI, FL • WASHINGTON, D.C. • LOS ANGELES, CA
OAKLAND, CA • CHICAGO, IL • AUSTIN, TX • DALLAS, TX • HOUSTON, TX

WWW.PECKLAW.COM



Brett Snyder
installed as
Washington
Building Congress's
82nd Chairman of
the Board

M **Meet the Chairman**

Growing membership and providing member value tops list of Snyder's goals for the coming year

Brett Snyder, Washington Building Congress's newly elected Chairman of the Board, grew up in Northwest Pennsylvania, just north of Pittsburgh. He first came to the Washington, DC area after graduating from Purdue University in Indiana in 1995 with a degree in Civil Engineering to work for Lend Lease (McDevitt Street Bovis at the time) as a Project Engineer.

"They recruited me right out of Purdue and I was just incredibly fortunate to end up in D.C.," Snyder explained. "They were looking at both Charlotte [North Carolina] and D.C. as options... I felt very fortunate to land where I did with a great team of people in a growing office."

Throughout the years, Snyder has built his career in the commercial real estate industry, having worked in some of the area's most prominent firms, including JPI, Inc., P&P Contractors, Inc. and JBGR Retail. Now, Snyder is serving as Senior Vice President and Principal of GreenBench Companies, a commercial real estate services firm focusing on development and construction, and a company he helped create.

"At the end of the day, I think being a principal and part of a start-up allows you to work with clients that you enjoy working with and being around," Snyder said. "We've been incredibly fortunate to work with some of the best clients in the industry—many of which I consider friends. I also think we have one of the most intelligent, innovative and entrepreneur-minded teams focusing on bringing our clients' projects to fruition."



Past Chairman Mike Barruccheri passes the gavel to incoming Chairman Brett Snyder.

Snyder considers himself fortunate to have worked for five different firms in his career that have all been active members of the Washington Building Congress—from general contractor to developer/builder to subcontractor, and now with his own consulting firm.

First and foremost, he seeks continued, and strong, membership growth and support of WBC's new members to ensure all members get the most out of the association.

"It's really the premiere networking association in the Washington, D.C. area, bringing together our industry's key decision makers," Snyder commented. "And our programs and events continue to be top notch."

"I think my experience with WBC has been one of developing relationships with others in the industry—people that are open and friendly and know what is going on in real estate in our region," he said. "I think it is the perfect association to create and maintain those relationships, many of which I've had for decades."

Now, as WBC's 82nd Chairman of the Board, Snyder indicated that the goals for his term are really carrying over from prior years, and that came out of a strategic planning session that occurred in 2018.

First and foremost, he seeks continued, and strong, membership growth and support of WBC's new members to ensure all members get the most out of the association.

Snyder said, "I would ask each of you ... to make sure someone from your company is involved in a committee or is attending functions. We love that

you attend the golf tournament and come out for the industry's best Holiday Party each year, but try and go beyond that with the resources of your company and commit to recruiting one new member to [WBC]."

His second initiative is to enhance the association's website and "back of house functions" so that they work together seamlessly. "We want to make sure that it's easy for all members and non-members to know what we have going on and how to get involved."

Snyder's third goal for his term is to work towards establishing an ongoing scholarship for students who are pursuing work in the trades through the Washington Building Congress Foundation.

"Just as our Craftmanship Awards program is unique in the industry—in that it is intended to celebrate those individuals who actually *perform* the work—we want make sure that resources are available to those who are considering going into the trades so we have workers for generations to come."

In conclusion, Snyder stressed that active involvement will ultimately ensure members get the most out of WBC. "I want to encourage everyone to stay involved or become involved. It's your participation that makes this organization so successful."

So, what does WBC's newest Chairman of the Board do when he's not serving his clients at GreenBench or the association he'll be leading in the year to come? "'Work Hard / Play Hard' is an often-overused anecdote, but one that I believe I've lived by, and I tend to surround myself with people who are similar."

"In 2015 we were working on getting GreenBench started, and at the same time I was working on starting Waredaca Brewing Company with my wife's family. We're now nearly five years in on both ventures, and I'm happy to say that both are doing well," Snyder said. "It's a big source of pride for me to have been involved with two very different start-ups—not to mention helping to raise three amazing kids that I am incredibly proud of. If I'm not in the office, or on a project site, I'm at the brewery or more likely on a lacrosse or field-hockey field, swim deck, equestrian arena, dance studio, musical stage or cross-country course watching them compete, perform and be passionate about what they are doing." **F**

Proud Sponsor of the Washington Building Congress

Trust the Faces You Know

Fox Rothschild's Construction Law Group

National Footprint – Comprehensive Suite of Services

Federal Government Contracts | Contract Review | Construction Defect
Alternative Dispute Resolution | Litigation | Employment



Fox Rothschild LLP
ATTORNEYS AT LAW

Atlanta | Charlotte | Chicago | Denver | Los Angeles | Miami
Minneapolis | New York | Philadelphia | Seattle | Washington, DC



FALL *Kickoff* 2019



Fall Kickoff Sponsor

Stromberg Metal Works

Food Sponsor

BALA | META

Bar Sponsors

Calvert Masonry

Carlton Fields

Insurance Associates

a Marsh & McLennan Agency LLC Company

Miscellaneous Metals

Performance Contracting

W. E. Bowers



Annual Sponsors

CORPORATE SPONSOR

Fox Rothschild, LLP

STEEL SPONSORS

AECOM Tishman

IBEW Local 26

Skanska USA Building

Siemens Industry

Telligent Masonry

WCS Construction

ALUMINUM SPONSORS

Dynalectric Company

Goldin & Stafford

The Whiting-Turner Contracting Company

CONCRETE SPONSORS

Asmar, Schor & McKenna

Clark Construction Group

Cohen Seglias Pallas Greenhall & Furman

DPR Construction

EDG2

Grunley Construction Company

HITT Contracting

PCC Construction Components

Peckar & Abramson

Rosendin Electric



FALL *Kickoff* 2019



Technology & Innovation



The project at 7272 Wisconsin Ave., Clark Construction Group, clarkconstruction.com



Reality-Capture Case Study:

Using Pix4D for Documenting As-Built Work

by **Michael Lehker, AIA**, VDC Department Director at Miller & Long. M. Architecture, 1996 University Of Maryland

and **Bahar Saghaei**, Assoc. AIA; VDC Engineer at Miller & Long. MS Architectural Engineering & Construction Management, 2015 Carnegie Mellon University

Regular as-built documentation plays an important QA/QC role on the jobsite to avoid costly and time-consuming reworks and alterations. Until recently, acquiring as-built information was mostly a time-consuming task performed by field engineering teams and project managers. The advent of new laser scanning and photogrammetry technologies is changing this.

Photogrammetry is the process of obtaining and measuring 3-dimensional data from 2-dimensional photographic images. Photogrammetry is most often performed using drone-mounted cameras that periodically are flown on construction sites taking photographs of the construction progress through the assembly images into a single Orthomosaic Image.

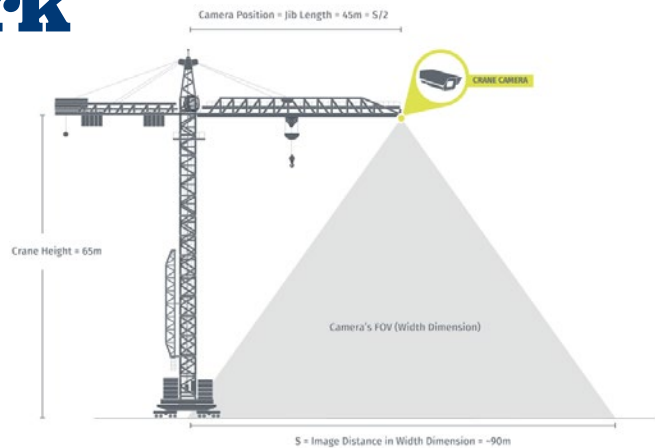


Figure 1: Crane camera mounted on crane's jib, pix4d.com

An orthomosaic image is created by software that combines, processes and interprets images collected over time into a single accurate image. Orthomosaic images are adjusted for topographic relief, lens distortion, and camera tilt. The image offers an accurate representation of the structure and has a uniform scale which allows it to be used to measure true distances.

Drone-mounted cameras are the ideal method to collect and process these images, however, due to FAA regulations around much of the Washington DC area

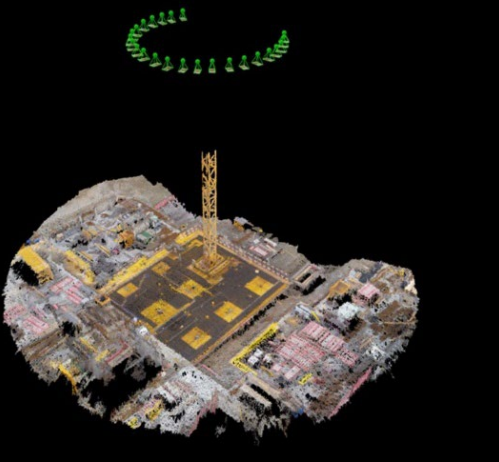


Figure 2: Camera scans the site during crane's daily operation, pix4d.com

that prohibit their use. So, Miller & Long began investigating the utilization of crane-mounted cameras as a means of providing aerial imagery to map, measure, analyze and report the progress and accuracy of work on our construction projects.

In the spring of 2019, Miller & Long launched a pilot program testing this crane-mounted camera solution on a large and complex project in downtown Bethesda. The objective was to provide an alternative to ground-based surveys and manual as-built documentation so that the project team can access as-built data automatically. We selected Pix4d, a company located in Switzerland, to provide the equipment, software and service to accumulate this information.

Pix4D is a suite of photogrammetry software providing 2D and 3D imagery using drone and crane-mounted cameras. Pix4D crane-mounted cameras transfer data captured from the job site to the Pix4D online cloud. The received data is then processed to provide orthomosaic 2D imagery and 3D point cloud and mesh, daily and automatically. The online cloud interface has annotation and measuring capabilities, and the processed data can also be downloaded in various formats.

Pilot Program

Located in Bethesda, MD, the 937,000 square-foot project consists of an office and two residential towers. Due to the rules prohibiting drone use, the Miller & Long VDC department turned to Pix4D, to provide as-built aerial imagery via the crane-mounted camera solution.

Two main workflows were anticipated to utilize the technology. First, 'quality control' by overlaying 2D drawings (structural, edge of slab, MEP, embed and sleeve drawings) on the as-built image to check for accuracy and to communicate clashes with different teams and trades. Second, 'documenting daily project progress and site conditions'; two daily images help document and measure the amount of poured concrete, rebar/cable placed.

System Implementation

The number and arrangement of cameras are determined by the Pix4D team after receiving the project plans and specifications. The camera system relies on SIM cards for data transfer. After inserting the SIM cards in the cameras, and checking their connectivity to the cloud, they are mounted on the crane by the crane operations team. For the office tower at 7272 Wisconsin, four cameras were installed on the jobsite's tower crane jib.

Workflow

Targets are a key factor in aligning the drawings with the as-built orthomosaic image. Physical targets on the jobsite captured in the 2D image are aligned with the marked location of the targets on the drawings to overlay the drawing on the image. At least two visible targets are needed for the aligning. With the



Figure 3: Physical targets are captured on the daily orthomosaic image and are marked on the online Pix4D account, Miller & Long Co.

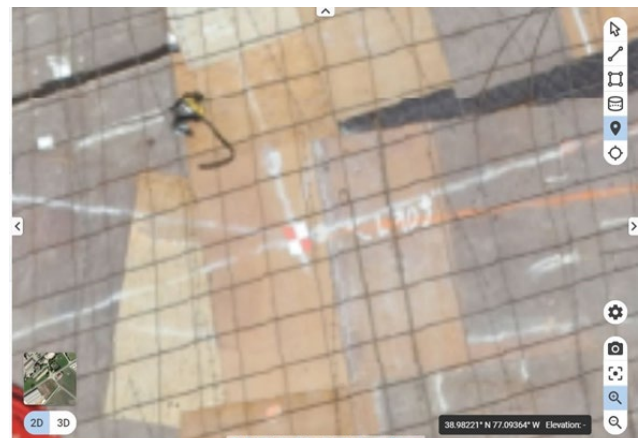


Figure 4: Zoomed in: physical target on the slab

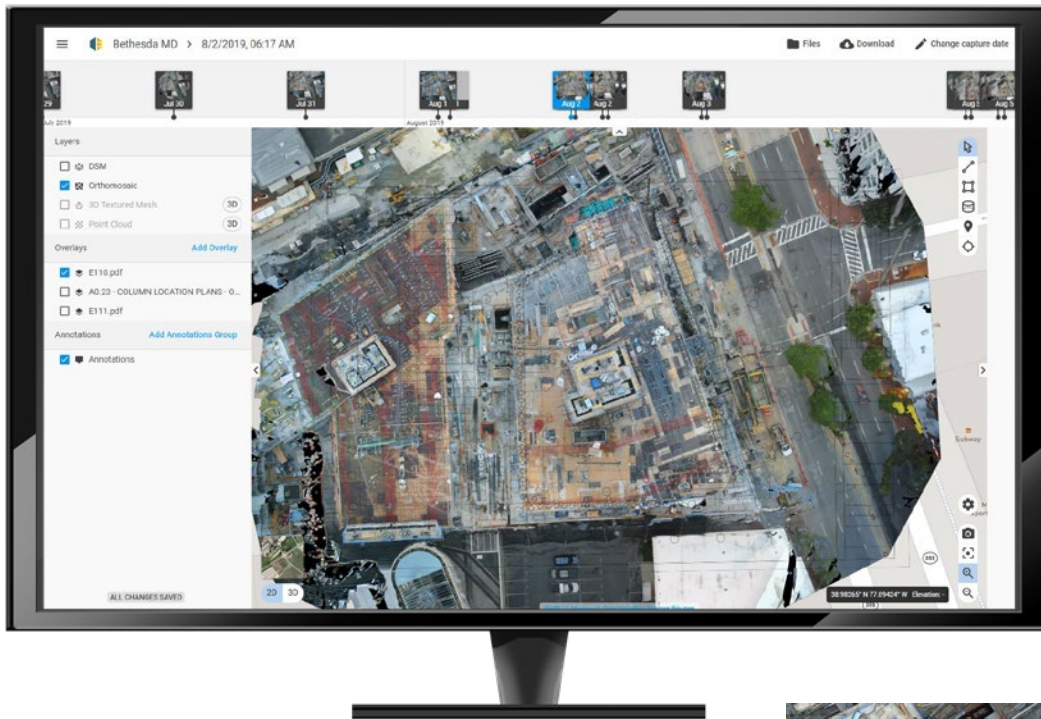


Figure 5:
Pix4D online account interface.

Layers of drawings can be superimposed on the orthomosaic image. Daily photos are accessible by scrolling through the project timeline on top. Annotation tools include 1D, 2D and 3D measuring, marking and inspection.

drawing being overlaid on the 2D image, as-built work can be compared with the design for quality check purposes.

At the jobsite, a 2'x3' metal sheet was installed on control lines and used as a target for image calibration. To make sure we have at least two visible targets on each processed image, four targets are located on each floor. As the construction goes on and new floors are poured, targets are moved to the upper floor. The locations of the targets are determined by Miller & Long field engineers and are marked on poured slabs as they mark the columns and gridline layout on the slab.

Photographic images are taken at intervals throughout the day and then processed into the orthomosaic image over which construction drawings can be overlaid by the project's field personnel by uploading drawings to the Pix4D cloud site. The online annotation tools are then used to measure distances and areas. The daily image is also used for determining logistics and work progress; the jpeg export of the superimposed drawing and image is attached to daily reports for as-built documentation.

Challenges

The capacity to which we can utilize the final orthomosaic image directly depends on its resolution. During the project we realized that the resolution is dependent on different factors such as the distance between the under-construction level and the camera resolution. We quickly found that the actual image



Figure 6: Online annotation tool: area

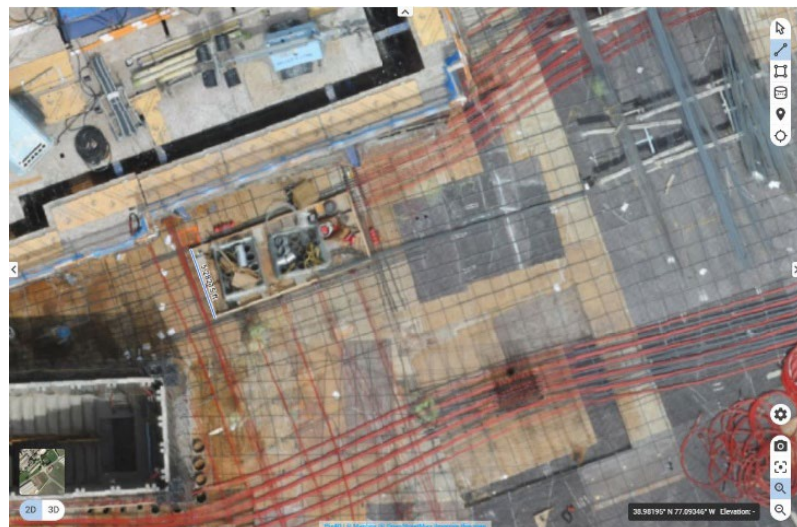


Figure 7: Online annotation tool: length

resolution at lower levels was not high enough for some of the uses we had initially anticipated. For example, the orthographic image could not be used for checking finer details such as the location of the embedded elements. The actual precision of the final processed daily image is 0.5 inch while we prefer a precision within the 0.25-inch limit for our quality check purposes.

Mounting the cameras on the jib of an erect crane can also be challenging. It is preferred to install the cameras on the crane's jib before the crane is erected. Also, placing the cameras on tower crane jibs imposes accessibility issues and makes regular inspection and adjustment of the cameras difficult.

Conclusion

The orthomosaic imagery is a powerful tool for monitoring and documenting the as-built work. The drawing overlay capability facilitates QC checks of the work progress and provides documentation of when work was placed. However, the resolution of the final processed image limits its application primarily to verifying work placement and less to accuracy checks.

In this pilot program, the Pix4D online cloud interface proves to be easy to navigate and operate; it provides convenient annotation tools and a handy timeline of the project through recorded daily images and the drawing overlay capability is a valuable tool for comparing the as-built work with the design. While Pix4D is useful for general documentations and monitoring as explained above, it cannot solely be reliable for finer measurements. Automating imagery for operations such as edge of slab and embeds as-built documentation requires much higher resolution cameras and the higher cost of such system might not be justifiable for the purpose; currently, for such uses manual scanners and surveys seems to be the more reliable option. **F**

About Miller & Long

Founded in 1947, Miller & Long has grown to be the leading, full-service provider of concrete construction services in the mid-Atlantic region.

Launched with just two partners, the company now averages more than 1,500 employees working to build local communities from the ground up.

Miller & Long employs their qualified resources, innovative technology and reliable manpower to build diverse facilities and structures throughout the District of Columbia, Maryland and Virginia.

IBEW Local Union 26— Proudly powering Washington, DC, Maryland, and Virginia for over 125 years!



Quality Craftsmanship with Pride

4371 Parliament Place, Lanham, MD 20706 • 301-459-2900
www.ibewlocal26.org • www.facebook.com/ibew26





SIEMENS
Ingenuity for life

Ingenuity for life creates perfect places.

We spend around 90 percent of our lives indoors. So buildings are far more than just four walls. At Siemens, we make those experiences better by making those places more comfortable, safe, secure and sustainable. It takes Ingenuity for life to create these perfect places – to give people a place to achieve their most ambitious goals, to give them a place where they can be successful and live the life they want.

#CreatingPerfectPlaces

usa.siemens.com/perfect-places

2020 Annual Sponsors

CORPORATE SPONSOR



Fox Rothschild LLP
ATTORNEYS AT LAW

Fox Rothschild LLP is a full-service, national law firm known for its responsiveness and agility in problem solving. Fox's attorneys are well-versed at navigating the complex landscape of the construction industry, from compliance advice to claims litigation involving federal contracts and large-scale, complex commercial projects. Built to serve businesses of all sizes, we have grown to 950 lawyers in 26 offices coast to coast over the past century. At Fox, we care about your success as much as you do.

STEEL SPONSORS



GREENBENCH
COMPANIES



HENSEL PHELPS
Plan. Build. Manage.



SIEMENS
Ingenuity for life



ALUMINUM SPONSORS



CONCRETE SPONSORS

Asmar, Schor & McKenna, PLLC
Clark Construction Group, LLC
Cohen Seglias Pallas Greenhall & Furman PC
DPR Construction
EDG2, Inc.

HITT Contracting
Peckar & Abramson, PC
Ruppert Landscape
Skansa USA Building
Watt, Tieder, Hoffar & Fitzgerald, LLP

AGGREGATE SPONSORS

Varela, Lee, Metz, & Guarino, LLP

Washington Gas

WBC Holiday Party



BOOKS

Please bring new or used children's books for **TURNING THE PAGE**

SPONSORSHIPS

(closes on Dec. 5)

FOR WBC MEMBERS ONLY

- The Party** \$1,200
(6 tickets & company name on sign)
- Food & Beverage** \$800
(4 tickets & company name on sign)
- Valet Parking** \$400
(2 tickets & company name on sign)

Please visit wbcnet.org for a full list of sponsors.

FY'20 WBC CORPORATE SPONSOR



Fox Rothschild LLP
ATTORNEYS AT LAW

CANCELLATION POLICY

Fees refunded only if written notice is received no later than December 4, 2019. In the event of written cancellation, WBC may retain \$30 of the initial fee to cover administrative costs.

Washington Building Congress
1100 Vermont Avenue NW, Suite 700
Washington, DC 20005
P: 202.293.5922 F: 202.429.1922
www.wbcnet.org

Tuesday, December 10, 2019

6:00 to 8:30 p.m.

Congressional Country Club
8500 River Road | Bethesda, MD
Business Attire Please - Jacket Required by Club

Please join WBC Chairman Brett Snyder, member host Stephen Spencer and guests for the premiere industry event of the season, the **WBC Holiday Party**.

Don't miss this great opportunity to come together with friends and colleagues as we enjoy good fellowship and share the cheer of the holiday season.

Holiday Cheer, Delicious Food, Amazing Desserts & Open Bar.

REGISTRATION

- \$175 WBC Member & Guest** (per person) **\$225 Non-Member** (per person)

Name: _____ Name: _____

Name: _____ Name: _____

Name: _____ Name: _____

Company: _____

Address: _____

City: _____ State: _____ Zip: _____

Phone: _____ Email: _____ (for confirmation)

No Walk-Ins Allowed - Register by December 6

PAYMENT INFORMATION

Enclosed is my check for \$_____ (payable to Washington Building Congress)

Please charge \$_____ to my credit card: AMEX VISA MasterCard

Name as it appears on card _____

Credit Card # _____ Exp. Date _____ Security # _____

Card Billing Address _____
(required if different from address above)

Signature **(REQUIRED)** _____

Register Online at www.wbcnet.org or Fax to 202.429.1922

M ember Projects



Topping Out at Pike & Rose, North Bethesda, MD

DAVIS Construction Tops Out at 909 Pike & Rose

James G. Davis Construction Corporation (DAVIS) recently topped out at **909 Rose** in North Bethesda's Pike & Rose neighborhood. Upon completion, this 200,000-square-foot, Class-A office building will be the new home of Federal Realty's (Federal) headquarters. The new building includes a dedicated office lobby with shared amenity spaces including a fitness center with full-service locker rooms, bike storage, and a rooftop lounge and terrace. With a Wired Silver Certification, 909 Rose is the most interconnected and cloud-ready office building in the Washington Metro region. The development is easily accessible from all major highways and public transportation (one block to Metro's Red Line), and has abundant on-site parking.

DAVIS Breaks Ground for New IDA Headquarters in Potomac Yards

DAVIS broke ground at the site of the new 411,000-square-foot **Institute for Defense Analyses (IDA) headquarters** in the Potomac Yard neighborhood of Alexandria, VA. President + CEO Jim Davis, Principal Bill Moyer and Vice President Pranav Pandya represented DAVIS at the groundbreaking event in August, helping to usher in the commencement of work on the 730 East Glebe Road location after over 10 years of planning for IDA's new center of operations, during which DAVIS was an active partner.

The build-to-suit office building project will consist of two, eight-story towers, as well as landscaped courtyards, a five-level parking garage and enclosed pedestrian bridges connecting the towers. Additionally, the interior will include a 400-person auditorium and conference center.



Ground Breaking at the Institute for Defense Analyses (IDA) Headquarters, Alexandria, VA



Landscape Construction Services:

- Pre-Construction Services & Budgeting
- Green Roof Installation
- Hardscape & Irrigation Installation
- Water Feature Construction
- Project & Sub-Contract Management
- Tree Growing, Moving & Installation

(301) 482-0300 ■ www.ruppertlandscape.com

M ember Projects



Brightview Bethesda-Woodmont Senior Living Community, Bethesda, MD

Brightview's Newest Facility Completed by Donohoe

Donohoe Construction achieved Substantial Completion on the **Brightview Bethesda-Woodmont Senior Living Community** located in downtown Bethesda. This is Brightview's newest facility and is an award-winning design from Hord Coplan Macht Architects out of Baltimore. Brightview Bethesda-Woodmont is a 113-unit assisted living facility with a dedicated memory care unit and features including a beauty salon, fitness room, activity spaces, exterior courtyards, underground parking and a spectacular 8th Floor dining room with full-height windows and panoramic views of Bethesda.

Donohoe's Gilliam Place Receives Certificate of Occupancy

Donohoe Construction's **Gilliam Place** project received its certificate of occupancy, and residents can begin moving into the 161,330-square-foot affordable housing apartment complex. Gilliam Place was designed by KGD Architecture for developer Arlington Partnership for Affordable Housing (APAH). The amenities in the 173-unit apartment complex will feature an enclosed parking garage, a retail podium, and barrier free units for disabled residents.



Gilliam Place, Arlington, VA



One Light Street Celebrates Grand Opening, Baltimore, MD

Grand Opening of One Light Street in Baltimore

One Light Street, Donohoe Construction's 28-story tower in downtown Baltimore, MD, celebrated its grand opening earlier this summer with a celebration hosted by Madison Marquette at the rooftop amenity space of the building. The tower includes nine floors of office space and 10 floors of luxury apartments with 280 units. The building also contains ground level retail space and 646 parking spaces. Amenities include a fitness center, rooftop infinity pool, clubroom and dog run. The building was designed by AECOM to achieve LEED Silver certification.

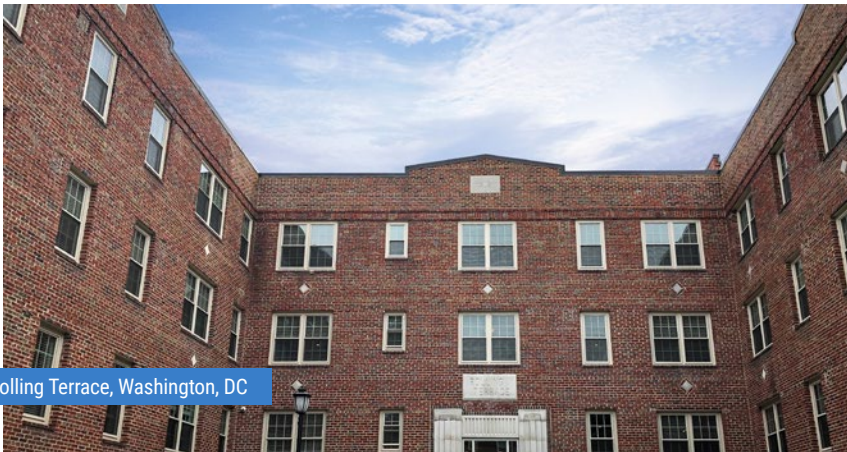
M ember Projects



Robinson Landing Topping Out, Alexandria, VA

Donohoe Celebrates Topping Out at Robinson's Landing

Robinson Landing, Donohoe Construction's condominium project in Alexandria, VA, celebrated its Topping Out in July. The 282,300-square-foot luxury condominiums were designed by Shalom Baranes Associates and carried out by Donohoe Construction for Developer EYA. The condominiums will feature several different amenities such as a fitness center and yoga studio while offering beautiful, picturesque Potomac River views right across from the nation's capital. Robinson Landing will be a landmark in the area and will offer significant site improvements, adding value to the surrounding community. The project is expected to be completed by Summer 2020.



Rolling Terrace, Washington, DC

Rolling Terrace Renovation in Washington, DC Completed by Donohoe

Donohoe Construction completed a renovation of **Rolling Terrace**, a 54-unit apartment building in Washington, DC, following fire damage. The renovation included 300 new windows and other amenities, such as a bike room and laundry room. Rolling Terrace was designed by Bonstra Haresign for developer Borger Management.

Scaffold Resources Tackles Jefferson Memorial

Scaffold Resources recently installed an extensive access scaffold system at the Jefferson Memorial, providing access to the restoration efforts at the **Jefferson Memorial** through the rehabilitation of the existing stone by way of biofilm, repointing of stone joists and various other historical preservation efforts. Work includes: runway materials access from the paved road edge to a hoist, allowing for movement of material to the dome; total access to the Memorial dome with walk-boards, tarp-compatible cable system and tie-off system; movable access scaffold for underside roof access;



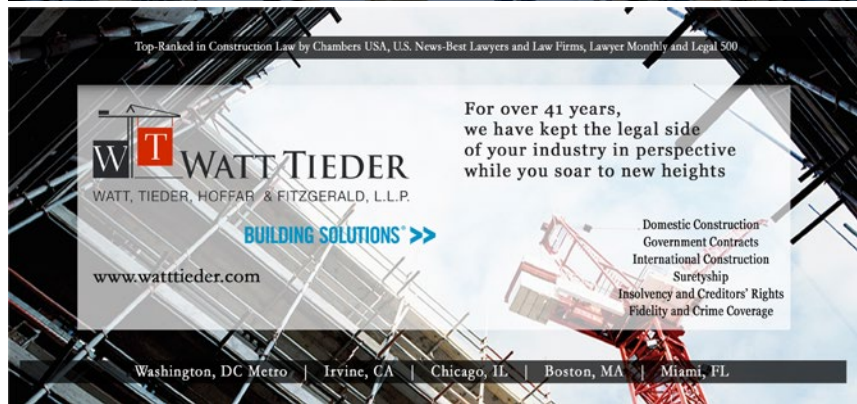
Jefferson Memorial, Washington, DC

MTember Projects

movable gantry system for removal and reinstallation of 1,200-pound roof stones; and access scaffold and work platforms to provide access to the exterior edges of the Portico and interior barrel vault. In addition, an overhead protection system was installed to allow for public access through the construction area and into the main chamber.

DAVIS Breaks Ground for Halley Rise Development in Reston

DAVIS Construction announced that it has broken ground at the site of the new \$1.4b **Halley Rise** development on the site of a 36-acre Reston office park. Formerly known as Reston Crescent, Halley Rise is directly adjacent to the new Silver Line Metro station in Reston slated to open in 2020. DAVIS is building an eight-story mixed-use building consisting of multi-family residential spaces above a Wegmans grocery store, that will transform the former office park into a dynamic mixed-use development. **F**



HENSEL PHELPS
Plan. Build. Manage.

www.henselhelps.com

Twitter Facebook Instagram LinkedIn



New Members

New Company Members

Anning Johnson

9408-A Gunston Cove Rd.
Lorton, VA 22079
P: 703-372-5340
www.anningjohnson.com
REPRESENTATIVE: **GREG BERGSTEDT**

EMG – A Bureau Veritas Group Company

10461 Mill Run Circle, Suite 1100
Owings Mills, MD 21117
P: 800-733-0660
www.emgcorp.com
REPRESENTATIVE: **MELISSA NELSON**

Graham Architectural Products

1551 Mt. Rose Ave.
York, PA 17403
P: 717-817-1713
www.grahamwindows.com
REPRESENTATIVES: **TOM HAINES,**
BRIAN LOCKWOOD

Grounded Electrical Construction

504 McCormick Drive, Suite C
Glen Burnie, MD 21061
P: 410-582-8061
www.groundedelec.com
REPRESENTATIVES: **BILL BRITT,**
BEN HARTKE, ZACH ROTHFUS,
RICHARD PLITT, CHRIS TEETER

Kane Innovations, Inc.

2250 Powell Ave.
Erie, PA 16506
P: 800-773-2439
www.kaneinnovations.com
REPRESENTATIVES: **SETH BLIZZARD,**
MAC HINES

Sparkle Painting Co., Inc.

7962 Conell Ct.
Lorton, VA 22079
P: 703-541-3100
F: 703-541-3108
www.sparklepainting.com
REPRESENTATIVES: **LEE ARMSTRONG,**
TYLER MILLER

New Small Business Members

GE Frisco

2 Crain Highway
Upper Marlboro, MD 20774
P: 301-249-5100
www.gefrisco.com
REPRESENTATIVE: **NEIL AGARWAL**

Kim Engineering, Inc.

5901 Ammendale Rd., Suite F
Beltsville, MD 20705
P: 240-542-4238
www.kimengineering.com
REPRESENTATIVES: **ANTOINE FOY,**
DANIEL KOH, MATTHEW WAGER

New Member Profiles

Anning Johnson

Anning Johnson has been a premier wall and ceiling contractor in the DC area and a valuable team member to its clients for over 75 years.

WCS CONSTRUCTION

BUILDING PARTNERSHIPS *EXCEEDING EXPECTATIONS*

www.wcsconstruction.com

Facebook icon | LinkedIn icon

N New Members

EMG

EMG, a Bureau Veritas Group Company, is a strategic partner and a go-to resource for maximizing real estate performance and value across the life cycle of owner portfolios. We provide services to clients during acquisition, disposition and finance of a property, for on-going asset management and capital planning needs of the portfolio, and at times of development/construction with project management, and commissioning. Since 1986, our team of environmental consultants, architects, engineers, and project managers has provided thousands of highly satisfied clients with services around the life cycle of their facilities.

GE Frisco

GE Frisco is an award-winning and family-owned construction materials supplier, specializing in lumber. For the past 60 years, the company has equally prioritized its customers, vendors and employees, and has become one of the largest and most trusted suppliers in the DC and Baltimore areas. The company has supplied the top contractors on some of the largest and most notable projects in the area. A new generation is now leading and growing the company, investing in the future, and building a strong and sustainable culture.

Grounded Electrical Construction

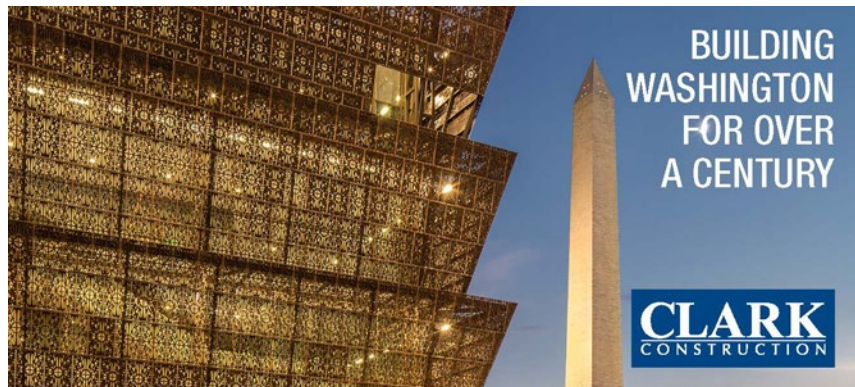
Grounded Electrical Construction is a full-service electrical contractor serving commercial and institutional clients in Maryland, D.C. and Virginia. The company provides quality electrical construction to general contractors and developers that includes design-build, commercial construction, tenant build-outs and facility maintenance.

Kane Innovations, Inc.

Kane Innovations, Inc. has been fabricating architectural metal building products since 1890. Kane's offering includes security products, and aluminum, glass and stainless-steel railing systems.

Sparkle Painting Co., Inc.

Sparkle Painting is one of the largest commercial painting contractors in the Mid-Atlantic region. Sparkle Painting family owned and run business that strives for excellence for their customers. **F:**



www.cohenseglias.com
www.constructionlawnowblog.com
www.fedconblog.com

PENNSYLVANIA NEW JERSEY NEW YORK DELAWARE WASHINGTON, DC KENTUCKY

Full Service Electrical Contractor Specializing in the Following Services:

- 24-hour Emergency Service
- Preventive Maintenance Services
- Infrared Thermography Scan
- Lighting Retrofits
- Estimating/Budget Services
- Mission Critical Facility Maintenance
- Service Contracts
- Generator/UPS Installations
- Design-Build/Assist Capabilities
- 3D Modeling
- Fire Alarm Tenant Fit-out
- Fire Alarm Retrofits of Existing Systems
- Fire Alarm/Sprinkler Testing & Service

Celebrating 50+ Years of Gold Standard Service!



22930 Shaw Road, Suite 100, Dulles, VA 20166
 Call: 703-724-3500
 Visit: www.dynalectric-dc.com

Calendar of Events

Dates and times subject to change.

November 2019

November 13, 2019
5:00 to 7:00 pm
HAMMERHEADS NETWORKING
Pinstripes Georgetown | Washington, DC

November 14, 2019
By 5:00 pm
CRAFTSMANSHIP AWARDS NOMINATION/ ENTRY DEADLINE
Nomination forms must be received with payment at the WBC Office by 5:00 p.m.
WBC Office

November 15, 2019
8:30 to 10:00 am
NEW MEMBER ORIENTATION BREAKFAST
WBC Conference Room

November 20, 2019
11:30 pm to 1:00 pm
CRAFTSMANSHIP AWARDS COMMITTEE MEETING
WBC Conference Room

November 21, 2019
5:30 to 8:00 pm
STATE OF THE DATA CENTER MARKET PROGRAM & RECEPTION
Sheraton Tysons Hotel - Tysons, VA

December 2019

December 10, 2019
3:00 pm to 5:00 pm
BOARD OF DIRECTORS MEETING #2
Congressional Country Club | Bethesda, MD

December 10, 2019
6:00 pm to 8:30 pm
HOLIDAY PARTY
Congressional Country Club | Bethesda, MD

January 2020

January 9, 2020
8:00 am to 4:30 pm
CRAFTSMANSHIP AWARDS JUDGING DAY
Maggiano's Little Italy Restaurant | McLean, VA

January 9, 2020
4:30 to 7:00 pm
WINTER NETWORKING
Maggiano's Little Italy Restaurant | McLean, VA

February 2020

February 26, 2020
4:00 pm to 6:00 pm
BOARD OF DIRECTORS MEETING #3
WBC Conference Room

March 2020

March 13, 2020
CRAFTSMANSHIP AWARDS BANQUET
64th Annual Craftsmanship Awards
Marriott Wardman Park Hotel | Washington, DC

April 2020

April 29, 2020
4:00 pm to 6:00 pm
BOARD OF DIRECTORS MEETING #4
WBC Conference Room

Advertising Information

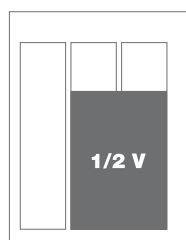
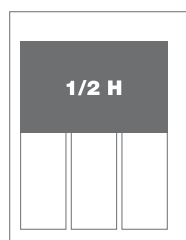
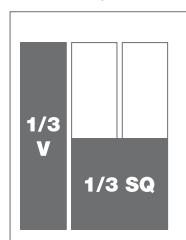
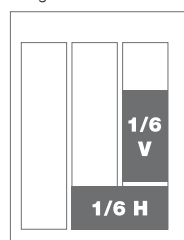
The **Bulletin** covers issues of importance to the building industry, news about WBC members and information about upcoming events. The topics listed below will be covered as feature articles in upcoming issues of the **Bulletin**. Persons interested in contributing information or advertising should contact WBC before the third week of the month preceding the issue. The **Bulletin** is published six times a year by WBC. To place an ad, submit material or for more information call **202.292.5922**.

Editorial Calendar

December / January	Members Giving Back
February / March	Sustainability
April / May	Craftsmanship Awards
June / July	Rebuilding Together
August / September	Marketing & Communications
October / November	WBC Leadership & Committees

Ad Sizes

Magazine trim size: 8.5"w x 11"h | Live area: 8.375"w x 10.875"h



1/6 horizontal	4.43"w x 2"h
1/6 vertical	2.1"w x 4.2"h
1/3 square	4.43"w x 4.2"h
1/3 vertical	2.1"w x 8.6"h
1/2 horizontal	6.75"w x 4.2"h
1/2 vertical	4.43"w x 6.38"h
Full-page	8.25"w x 10.75"h
Full-page + bleed	8.5"w x 11"h + .125" bleed

Advertising Rates

Member Rates:	1 time	3 times	6 times
1/6 horizontal or 1/6 vertical	\$155	\$130	\$110
1/3 vertical or square	\$230	\$190	\$150
1/2 horizontal or vertical	\$430	\$350	\$290
Full-page	\$630	\$510	\$410

Position

Inside Front Cover	\$830	\$670	\$540
--------------------	-------	-------	-------

Non-Member Rates:	1 time	3 times	6 times
1/6 horizontal or 1/6 vertical	\$210	\$176	\$149
1/3 vertical or square	\$311	\$257	\$203
1/2 horizontal or vertical	\$581	\$473	\$392
Full-page	\$851	\$689	\$554

Position

Inside Front Cover	\$1,121	\$905	\$729
--------------------	---------	-------	-------