




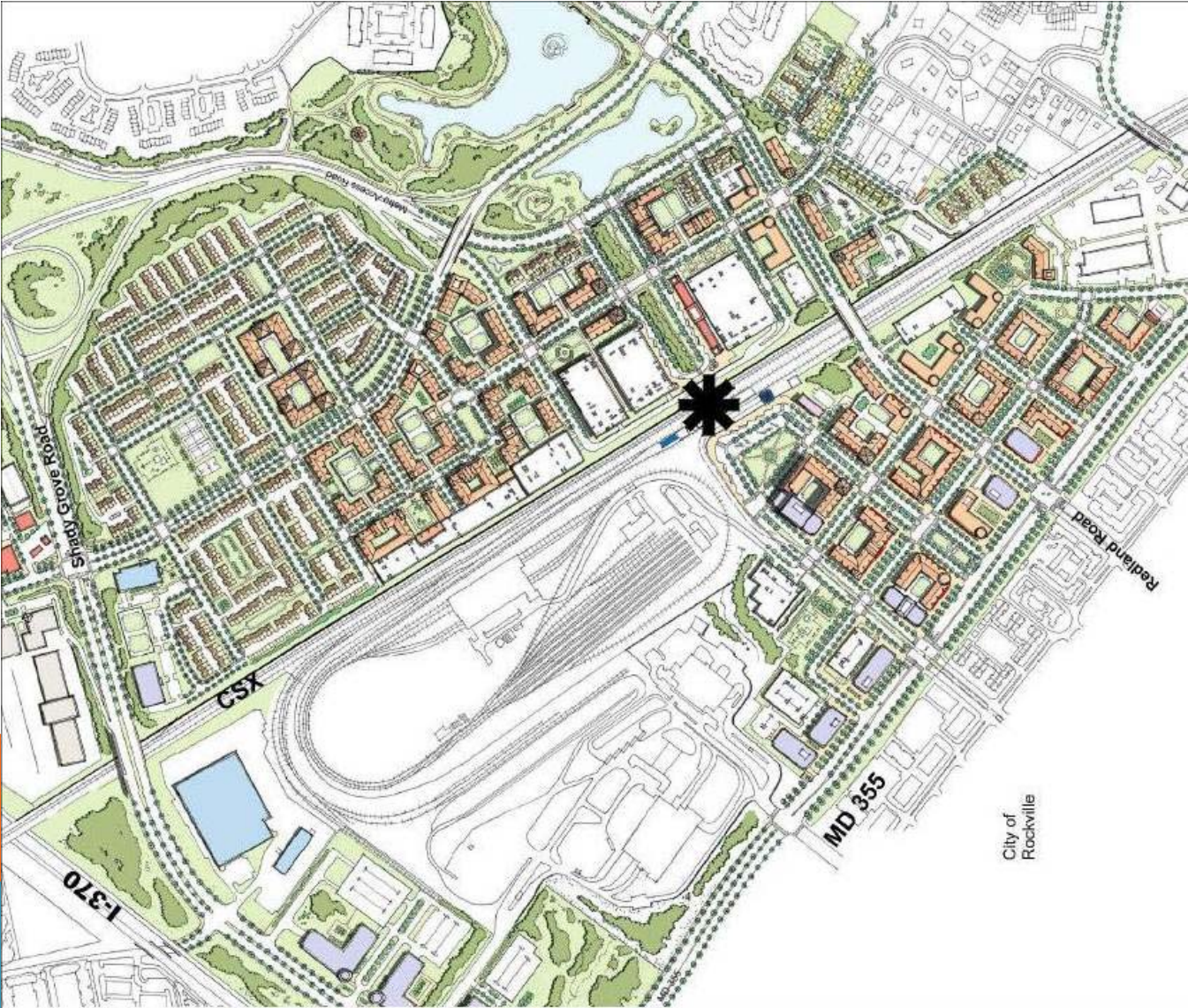
MONTGOMERY COUNTY
November 12, 2013
Presentation to the
Washington Building Congress

Greg Ossont, Deputy Director
Department of General Services
240-777-6016
greg.ossont@montgomerycountymd.gov

ECONOMIC DEVELOPMENT AND REDEVELOPMENT

- **Continue funding for the Smart Growth Initiative to move County facilities so that private, transit-oriented mixed use can occur near the Shady Grove Metro Station.**
 - **Complete co-locating management and certain operational functions for Police, Fire and Rescue Services, as well as other County departments in a new public Safety Headquarters.**
 - **Begin site improvement work for the new Multi-Agency Service Park to serve MCPS, M-NCPPC, Fire and Rescue Services and Police.**
 - **Fund the Wheaton Redevelopment program for planning, design and construction of a multi-user government complex on Parking Lot 13, to include a new headquarters for M-NCPPC**
 - **Provide transportation improvements to support White Flint development.**
- 

SHADY GROVE STATION



SHADY GROVE STATION (EYA)




PUBLIC SAFETY TRAINING ACADEMY (PSTA)



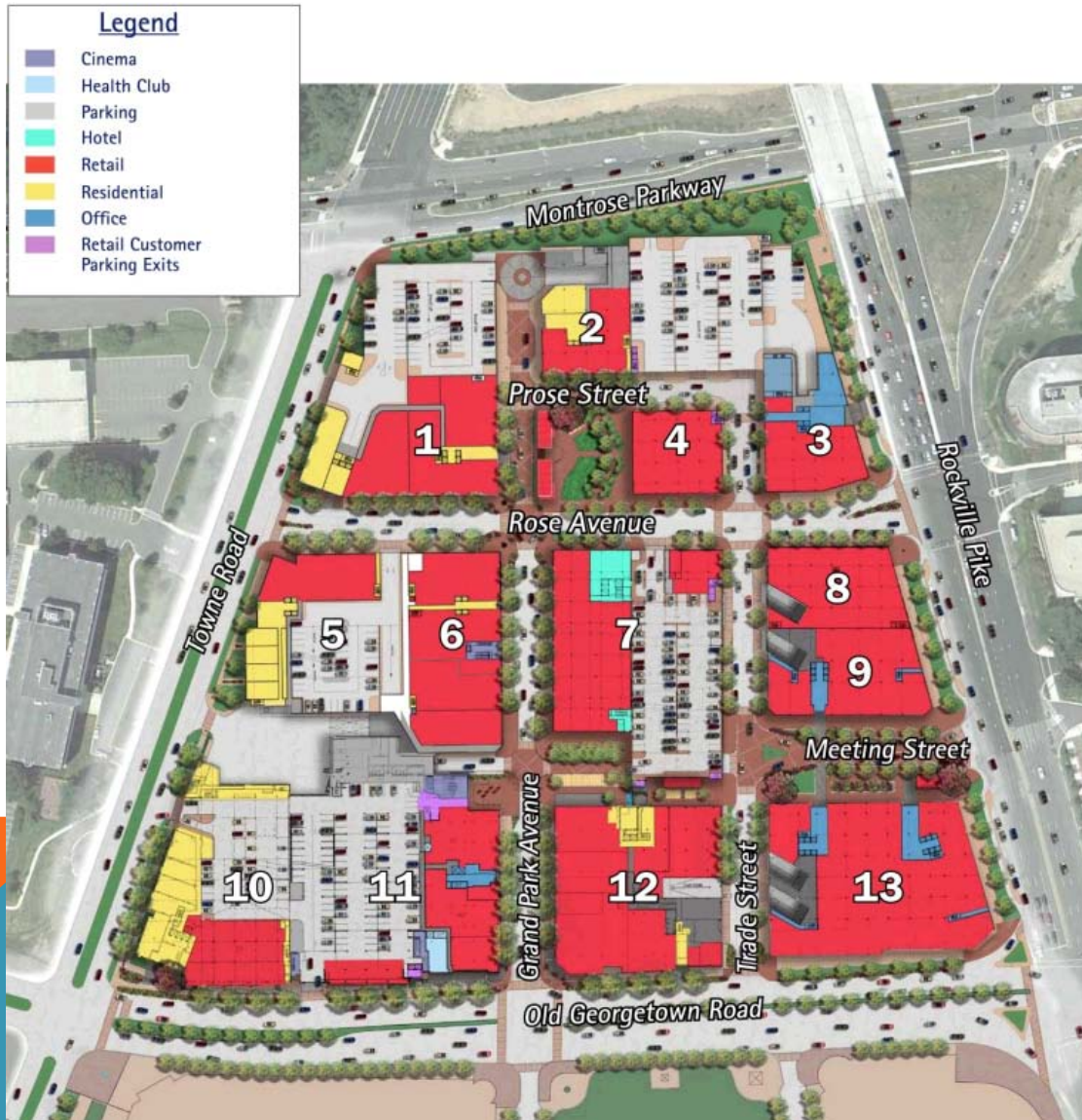
PUBLIC SAFETY TRAINING ACADEMY (PSTA)



WHITE FLINT PIKE & ROSE

- 450,000 square feet of retail
 - 1.1 million square feet of LEED certified office space
 - 1,500 residential units
 - a 300-room boutique hotel
 - More than 4,000 parking spaces
 - an 8-screen iPic Theatre
 - a 250-seat performing arts venue
 - Rose Park
- 

PIKE & ROSE

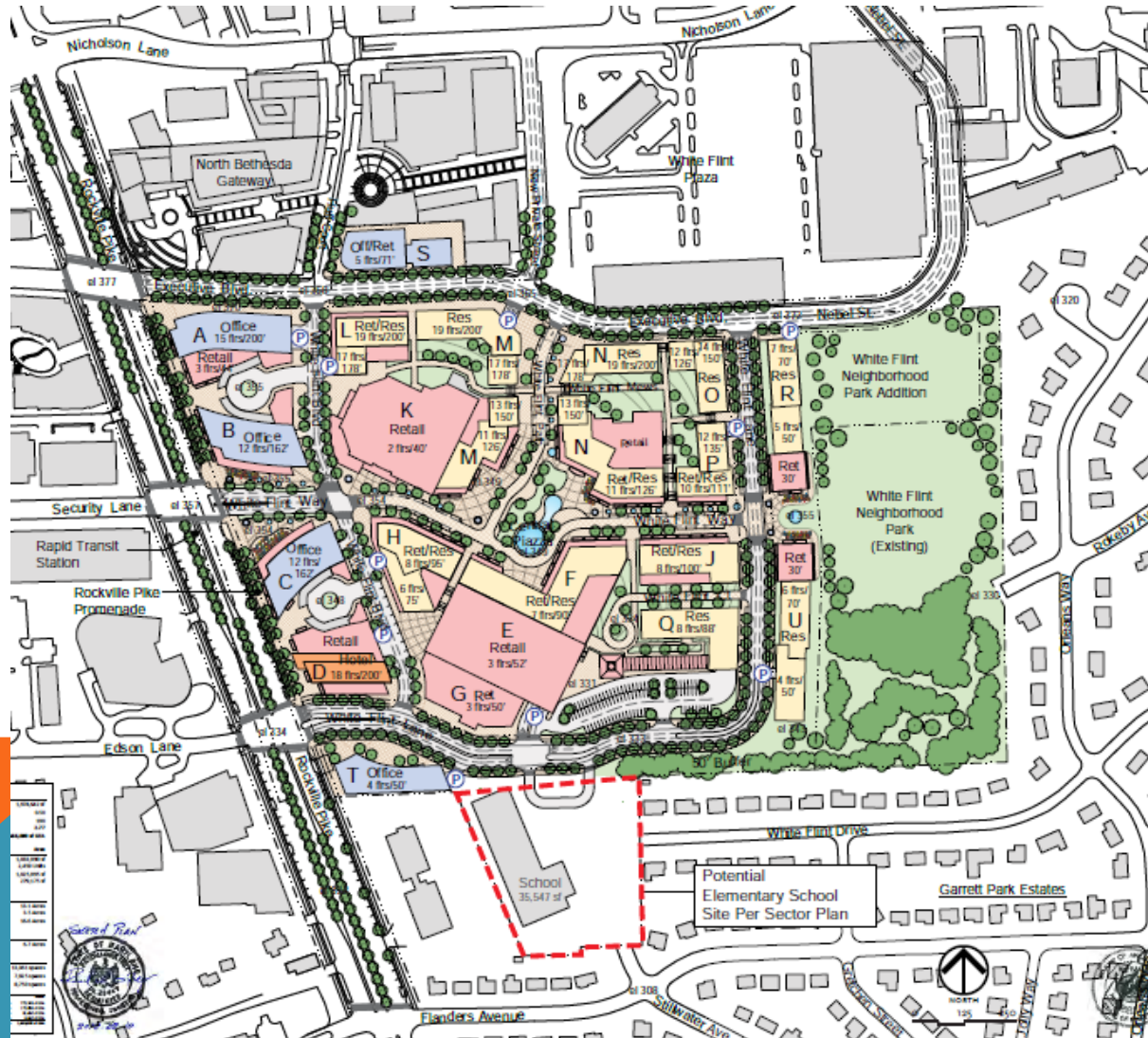


PIKE & ROSE



Source: Federal Realty Investment Trust

WHITE FLINT MALL REDEVELOPMENT PLAN



WHEATON- P3

MONTGOMERY COUNTY, M-NCPPC,
STONEBRIDGECARRAS/BOZZUTO



BETHESDA 2ND DISTRICT POLICE STATION



WHITE OAK SCIENCE GATEWAY/SITE II

