

Bulletin

The Official Publication of the Washington Building Congress | **Aug./Sep. 2012**

Inside ▶

Industry Report.....	2
Sustainability Highlights.....	6
Update Your Web Profile.....	8
Member Projects.....	10
New Members.....	13
WBC Calendar.....	15



Rendering courtesy of STUDIOS Architecture

Bulletin

August/September 2012

Washington Building Congress is a nonprofit association made up of professionals from a variety of disciplines, all with an active interest or involvement in the Washington Metropolitan Area's real estate, design, and construction community. The organization was established in 1937 to represent the collective interests of its members by providing education and networking opportunities and by promoting the advancement of the building industry. For additional information about membership, joining a committee or the WBC Bulletin, call (202) 293-5922 or visit us on the web at www.wbcnet.org.

CHAIRMAN OF THE BOARD

Paul Mella, Dynalectric Company

CHAIRMAN-ELECT

Jim Klein, The JBG Companies

VICE CHAIRMEN

John Barron, Foulger-Pratt Contracting

Tamara McNulty, Fox Rothschild LLP

Joel Zingesser, Grunley Construction Co., Inc.

TREASURER

Joe Schall, Pepco

SECRETARY

Carl Hirrlinger, James G. Davis Construction Corporation

IMMEDIATE PAST CHAIRMAN

Chuck Asmar, Asmar, Schor & McKenna, PLLC

DIRECTORS

Mike Baruccheri, Tishman Construction Corp.

Dan Buckley, Flippo Construction Co., Inc.

Lynne Coville, Boston Properties

Michael Leavitt, John Moriarty & Associates of Virginia, LLC

Nicolas Pasanella, Latitude 38 Real Estate LLC

Karen Roberts, Forrester Construction Company

Steve Smithgall, Balfour Beatty Construction

Anne Marie Tombros, Vango Construction Consulting

PRESIDENT & CEO

Steven J. Kenton, CAE

ASSOCIATE DIRECTOR

Rita F. Reis

EDITOR/DESIGNER

David Irish / Frank Sheehan, Frost Miller Group

Bulletin is published 10 times a year by Washington Building Congress, Inc. Individual subscriptions are available for \$139 per year. The articles in this publication are the opinions of the authors and do not necessarily represent or reflect the policies or opinions of Washington Building Congress. Copyright 2012. All rights reserved.



Washington Building Congress
1620 I St., NW, Ste. 810
Washington, DC 20006
T: (202) 293-5922 | F: (202) 429-1922
www.wbcnet.org | @WBCdc

Chairman's Letter

Dear Members and Colleagues:



The Washington Building Congress leadership set forth last October to ensure the association was effectively addressing member needs and expectations in what has been a difficult situation for our industry. I am pleased to report that thanks to a well orchestrated team effort, the association is more vibrant and active than when we started. I am confident that incoming Chairman of the Board Jim Klein (The JBG Companies) and the new Board of Directors will keep the positive momentum going next year. My term as Chairman ends September 30, and Jim will take office on October 1.

The WBC is finishing a very successful year highlighted by a series of excellent programs and activities. The 56th Craftsmanship Awards program enjoyed a near record 298 entries and recognized 80 winning projects. An amazing 1,200 people attended the March Craftsmanship Awards banquet to recognize over 360 individual craftsmen. This year we also inducted the fifth class of craftsmen into the *Craftsman Hall of Fame*. We had record attendance at each of our popular networking and Hammerheads events, 630 revelers enjoyed the Holiday Party and 320 players came out for the 75th annual golf outing. WBC also held an outstanding series of programs and seminars this year and will continue to focus on bringing the industry together for networking opportunities and professional development on a regular basis next year.

The outstanding August Summer Networking was hosted by the Hammerheads Committee for the full WBC membership. 175 people attended the annual event held at the always popular Cactus Cantina near the National Cathedral. Thank you to the Hammerheads Committee, Vice-Chair Chris Glinski (JBG Rosenfeld Retail) and Board Liaison Mike Baruccheri (Tishman Construction) for putting together another outstanding series of events over the past year for the next generation of industry leaders.

If you have not already done so, please be sure to renew your membership! You recently received a 2012-13 (FY'13) dues invoice, *Industry Index* member listing correction form, *Index* advertisement form, and annual sponsorship information. The WBC membership year runs from October 1 to September 30 each year and annual renewal payments are due September 30. If you have any questions regarding your membership or the WBC, please contact Rita Reis or Steve Kenton at (202) 292-5922.

I would like to take this opportunity to extend a special thanks to all of the dedicated committee and task force members, and particularly our talented chairs and vice-chairs. Each individual's commitment of time and hard work helped make this year a resounding success. Without each member's ideas and input, we could not have achieved so much. The WBC leadership and staff will continue to address the needs of our valued members through the committee process next year. I would also like to encourage new members and those of you who have not been active recently to volunteer a little time to our outstanding association and the industry. Please see the committee/task force volunteer sign-up form online or contact the WBC office for further information.

My year as WBC Chairman has been both personally and professionally rewarding. I would like to take this opportunity to extend a very special thanks to our loyal staff members, Steve Kenton and Rita Reis, for their continued professionalism and dedication to the organization.

It has been my honor to serve as WBC Chairman of the Board over the past year. To my peers, I will be forever grateful for this great responsibility that you entrusted me with. We look forward to your continued support and involvement in our outstanding association.

Thanks again and let's keep our association going strong next year!

Best regards,

Paul Mella
WBC Chairman of the Board

2012 Corporate Sponsor





Canned Food Drive Takes New Shape with Construction® Design Competition

Twenty two teams representing architecture and engineering firms throughout the DC Metro area gathered at the National Building Museum on September 1st to assemble their own works of edible architecture for Canstruction®. Canstruction is an international design competition created that raises food for the hungry in a creative and exciting way.

The Washington Architectural Foundation sponsors Canstruction|DC and this year's theme was MONUMENTAL. Teams began developing their concepts for the competition as early as June so that the thousands of items can be ordered and on-hand for the build-out on September 1, 2012 from 9 a.m. to 4 p.m. The creations remained on display in the Great Hall of the National Building Museum until September 8th for public display and judging by a panel of experts.

All canned food goods donated for this year's MONUMENTAL Canstruction|DC were donated to the Capital Area Food Bank, the benefactor of previous years' creations as well. This year's competition also took the challenge to the web, as a "People's Choice" category was announced.

Dominion Electric Supply Announces New Addition and Promotion

Richard Williams, CEO and President, of **Dominion Electric Supply Company, Inc.** is pleased to announce that **Stephen Krooth** has joined the company as executive vice president. Krooth is a graduate of the University of Wisconsin, and the George Washington University School of Law. In addition to practicing law, Krooth has worked on Wall Street as a managing director in the field of commercial real estate finance. The addition of Krooth as a member of the executive team is part of a plan that insures that the company remains privately owned and independent.

Dominion Electric Supply announces the promotion of **George F. Dove** to director of contractor sales. Dove will continue to manage the Laurel branch and, his new role will involve a greater focus of his role in pricing and sales strategy. As Laurel location Branch Manager, Dove oversees the day-to-day sales operations of the Laurel facility which include varied departments as the residential lighting showroom, materials sales department and the contractor counter and will call. Dove has worked in many capacities over the 22 years he has been with Dominion Electric Supply including the warehouse, counter sales, and inside sales.

Client Retention, New Clients Drive Lockton Growth

High client retention rates and strong new business growth helped **Lockton** post record revenues in fiscal 2012. Lockton reported total revenues of \$914,748,000 and organic growth of 9.4 percent.

Business Insurance magazine ranks Lockton as the 9th largest insurance broker in the world in its latest rankings published July 16, 2012.

In its report, Business Insurance reports that organic growth, rather than acquisitions, is the key factor in Lockton's success.

Organic growth for the brokerage industry has been "very low," averaging from flat to about 2 percent, said John

L. Ward, CEO at Cincinnatus Partners L.L.C., a private equity firm specializing in the insurance industry in Cincinnati.

Lockton, meanwhile, is known for a customer retention rate that outperforms the industry average by a wide margin. That, along with its leadership, has helped the company grow organically, which is less expensive than acquiring other brokers.

New Partnership Provides Electrical Job Training in Southern Maryland

The Washington, D.C. Joint Apprenticeship and Training Committee (JATC), End Hunger in Calvert County, So. Maryland Job Source, State of Maryland DLLR and the Tri-County Council for Southern Maryland have joined forces to help people in need get jobs.

The goal is to train at least 30 people to make them employable in the field of electrical construction and place them on the JATC's available to work list for trainees. As the class progresses the JATC will assign them to employers as R1 (entry level) trainees.

The first class was held on July 23rd at Calvert Career Center High School in Calvert County, MD. The classes will run twice a week for 15 weeks. The class will cover power and hand tool identification, material identification, conduit bending, basic wiring of switches and receptacles, introduction to blueprints, OSHA 10-hour safety certification, and first aid/CPR certification.

If they ultimately decide to pursue a career in electrical construction, they can apply for the JATC's three or five-year tuition-free apprenticeship program. After completion of the apprenticeship program, journeyman electricians can earn high pay, work anywhere in the country and move from field work into the professional arena as foremen, estimators or even own their own businesses.

The new program began with an idea from JATC Assistant Director Ralph Neidert. After JATC Director David McCord and he discussed McCord's participation in a bike race to support End Hunger, Neidert set about forming a partnership.

Paul Sugar Elected President of MVLS Board of Directors

The law firm **Ober|Kaler** announced that **Paul S. Sugar**, a principal in the firm's Construction Group, has been elected president of the Board of Directors of the Maryland Volunteer Lawyers Service (MVLS). He will serve for a one-year term, effective July 1, 2012.

MVLS provides free or low cost legal representation to Marylanders with limited income, and to nonprofits that serve low-income communities. Eligible clients are matched with volunteer lawyers who have the appropriate skills and expertise to provide quality representation. MVLS has a volunteer pool of 3,000 lawyers, providing services in every jurisdiction in the state.

Sugar has served on MVLS's board since 2006 and was honored with the MVLS Leadership Circle Award in 2008. He also serves as coordinator of Ober|Kaler's robust pro bono program, directing firm resources in a wide variety of pro bono legal matters—criminal law, domestic relations, estates and trusts, children in need of assistance, landlord-tenant disputes and immigration. In 2009, his efforts helped garner for Ober|Kaler the MVLS Law Firm of the Year Award for providing pro bono legal service.

Sugar focuses his practice at Ober|Kaler on construction industry counseling and dispute avoidance and resolution. He represents institutional owners, including colleges and universities, hospitals and other health care providers. He's an active member of the National Association of College and University Attorneys and its affinity group Higher Education Real Estate Lawyers. He's also a member of the Baltimore Chapter of Associated Builders and Contractors as well as the American, Baltimore City and Maryland State Bar Associations. He serves on the Board of Trustees of the Baltimore Bar Foundation.

Industry Report

TOLK Now Called Dewberry

Dewberry, a nationwide professional services company, announces the renaming of its TOLK division to Dewberry.

For more than 25 years, Dewberry's mechanical/electrical/plumbing (MEP) division in the Washington, D.C. metropolitan area has been known as TOLK. The renaming indicates a simplification in Dewberry's corporate naming conventions, to be in line with its recognized trademark.

The renaming does not accompany organizational or leadership change. Dewberry's MEP professionals in the Washington, D.C. metropolitan area will continue to operate out of their currently established office in Fairfax, Va.

This renaming of TOLK to Dewberry does reflect a full integration of TOLK's MEP expertise into Dewberry's myriad capabilities, to include security technology, audio-visual, voice/data, structural, civil, and dry utility design.

Pleasant to Chair Virginia Chamber's Highway and Transit Subcommittee



Dan M. Pleasant

Dan M. Pleasant, PE, chief operating officer of **Dewberry**, has been named chairman of the Highway and Transit Subcommittee of the Virginia Chamber of Commerce. The subcommittee is one

of five within the Transportation Committee that was established in the fall of 2011 to focus on multimodal transportation policies and the development of a transportation network that will help enhance Virginia's competitiveness as a place for business. In addition to Highway and Transit, the other subcommittees are Aviation, Ports, Rail, and Spaceport.

Pleasant has been with Dewberry, a privately held professional services firm, for 33 years. Prior to being named COO in 2010, he served as president of Dewberry's five-office southeast division, practicing in Virginia and North Carolina. Pleasant is a civil engineer

with extensive experience directing major infrastructure projects. A graduate of North Carolina State University, he holds Bachelor's and Master's degree in civil engineering.

Pleasant is a member of the American Council of Engineering Companies and is currently serving a six-year term with the Virginia Economic Development Partnership.

Washington, D.C. JATC Named Registered Apprenticeship Trailblazer and Innovator

The U.S. Department of Labor (DOL) has recognized the **Washington, D.C. Joint Apprenticeship and Training Committee (JATC)** for the opportunity it gives veterans, women, minorities, youth and dislocated workers to embark on a stable, high paying career in electrical construction.

The DOL's Office of Apprenticeship recognized the JATC as a 21st Century Registered Apprenticeship *Trailblazer and Innovator*. It notes the JATC's program demonstrates one example of the kinds of innovation and trailblazing efforts that have had a significant impact on the history of Registered Apprenticeship and has implications for Registered Apprenticeship in the 21st Century.

The JATC is sponsored by the **Electrical Alliance**, a cooperative effort between the Washington, D.C. Chapter of National Electrical Contractors Association (NECA) and the International Brotherhood of Electrical Workers (IBEW), Local 26. It offers a three and five year tuition-free electrical apprenticeship program.

Through its Step Up program, it has given hundreds of the region's residents who would not normally qualify for the apprenticeship program, the opportunity to achieve the requirements and transition to the apprenticeship program.

Director of the JATC, **Dave McCord**, and NECA Executive Director, **Andrew Porter**, joined Secretary of Labor Hilda L. Solis to commemorate the 75th Anniversary of the signing of the National Apprenticeship Act on August 1, 2012 in Washington, D.C.

Michelle Honey, FAIA joins Grunley Construction as Executive, Higher Education and Life Sciences Programs



Michelle Honey

Michelle Honey, FAIA has joined **Grunley's** Planning and Business Development Department as executive, higher education and life sciences programs. She will be leading

the firm's business development efforts to expand its presence in the construction and renovation of college and university facilities. This will encompass academic facilities, research and teaching laboratories, performing arts centers, athletic facilities, residences, libraries, student unions, administrative buildings, as well as hospital systems, clinical and research facilities, health care, veterinary science, and related facilities. Honey is a construction management executive with more than 25 years of experience. She was the director of planning and project management for Georgetown University for eight years, and was university architect and director of architecture, engineering and construction at The George Washington University for 13 years.

She has a Master's in Business Administration from Georgetown University and Bachelor's in Architecture and Building Sciences from Rensselaer Polytechnic Institute. Honey is a Fellow of the American Institute of Architects, an active member of the Association of University Architects, a member of the Society of College and University Planners, and serves on the Board of Directors of Gonzaga College High School and the Washington Architectural Foundation.

Insurance Associates Announces Latest New Hires

Insurance Associates is excited to announce the hire of two new associates: **Lexi Stock**, marketing manager and **William (BJ) Westner**, claims consultant.



Lexi Stock

Stock graduated from Loyola College in 2005 with a Bachelor's in business administration. She started her career in marketing immediately after in the Baltimore area. After living in

Baltimore for six years, she transferred to the Washington D.C. metro region and joined Insurance Associates in Rockville, Md. Her main role within the company is managing the marketing and PR for the agency. A few of her current projects include maintaining the company website, managing social media, and creating newsletters for clients and prospects on industry news.



William (BJ) Westner

Westner studied business administration at West Virginia University and began his insurance career at Banner Life. Shortly after, he obtained a position as a claims adjuster and led the organization through several state audits.

Additionally, he attained his CPCU designation and handled complex claims with high exposures. Westner is now delighted to join the team at Insurance Associates as a claims consultant. His 11 years of claims experience will enable him to be an advocate for clients in an ever-changing business climate.

GPI Greenman-Pedersen, Inc. Announces Move

GPI is excited to announce a new office location as of August 18, 2012. GPI is now located at 530 Gaither Road, Suite 100, Rockville, MD 20850. All phone numbers and email addresses will remain the same, with the main office line as 240-268-1820.



We've moved!

Stop by and see our beautiful new office.

GPI

Greenman-Pedersen, Inc.
Engineering and Construction Services

530 Gaither Road, Suite 100
Rockville, MD 20850

240.268.1820

www.gpinet.com

GRUNLEY

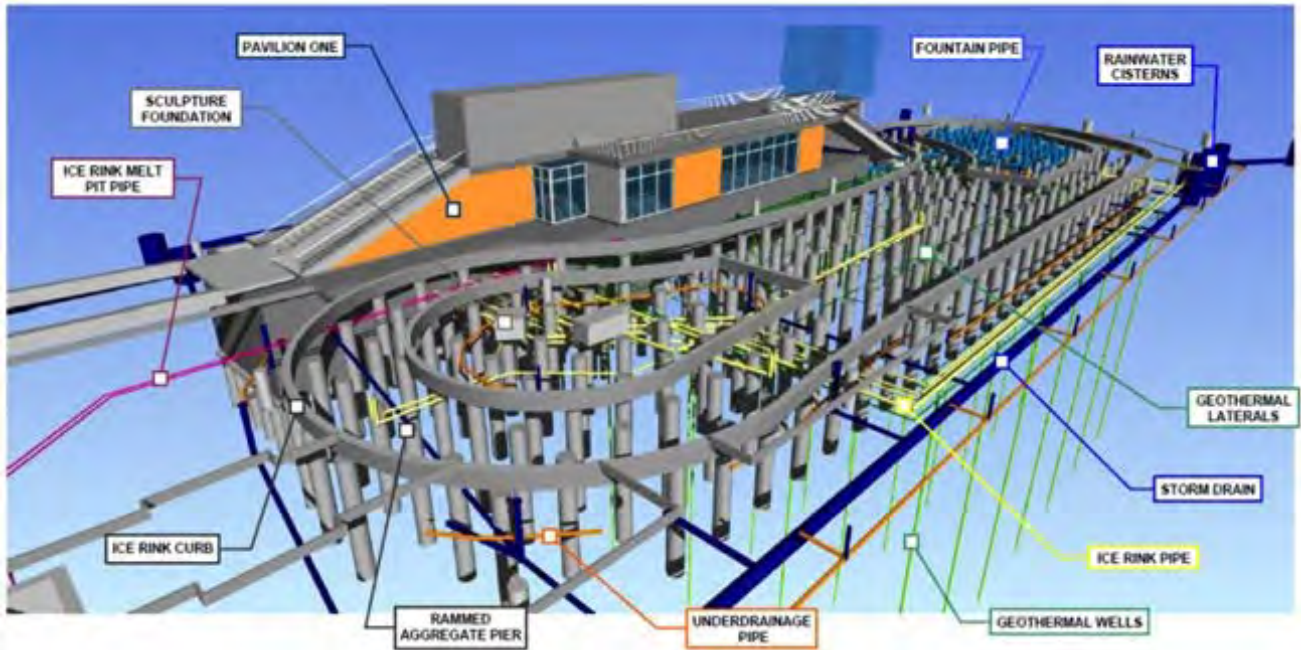
Building on Tradition

General Contractor | Design-BUILDER | Construction Manager



Ranked by WBJ as the fourth largest interior construction firm in the metro area

15020 Shady Grove Road, S-500 | Rockville, MD 20850 | 240.399.2000 | www.grunley.com



Overall South Block Coordination Model

Rendering courtesy of STUDIOS Architecture

WBC Project Highlight: Washington Canal Park

WBC member James G. Davis Construction Corporation (DAVIS) continues to lead our industry in sustainable construction—this time delivering the first new urban park in Washington in over 20 years.

Designed by renowned landscape architect Olin Studios with STUDIOS Architects, Washington Canal Park is not only set to achieve USGBC’s LEED Gold certification (NC), but is also a candidate for certification from the ASLA and the US Botanic Garden Sustainable Sites Initiative.

Sustainability + Community

Known locally as Canal Park, the site covers a three acre stretch of the Anacostia Waterfront and was formerly a collection of vacant industrial lots and abandoned buildings, making it ideal for a sustainable transformation. When completed Canal Park will feature rain gardens, pavilions, an outdoor ice skating rink, a café with outdoor seating, an interactive water fountain, sculptures by artist David Hess, and large green areas for flexible community spaces. From movies on the green to concerts on the pavilion, numerous cultural activities are planned for this unique space, making it a vibrant waterfront destination for D.C. residents and visitors.

Sustainability + Innovation

The south block of Canal Park houses the **outdoor ice rink**, an **interactive water fountain**, a **10,000 square-foot pavilion**, and **5,000 square-foot of rain gardens**. Buried below the ice rink are two 40,000 gallon storm water cisterns (or storage tanks), **28 geothermal wells**, supply and return piping, in addition to irrigation and civil utilities. Additional sustainable elements include a green roof system, operable screen panels for ventilation, bicycle racks, electric car charging stations, and sustainable maintenance of the park by utilizing emissions free and battery powered equipment, as well as minimizing the use of synthetic chemical pesticides and fertilizers.

The park’s biggest sustainability innovation is a **rainwater collection system** that will save an estimated **1.5 million gallons of potable (drinkable) city water per year**. This gravity-fed system will capture all rainwater runoff drawn from the site and seven city blocks, and feed into the first cistern where it is used to irrigate the rain gardens, surrounding trees and grass areas. (A rain garden is a planted depression of native shrubs,



“...Working with the client, we developed a design that evokes the history of the space. Design elements demonstrate modern sustainable strategies and educate the community on environmental challenges and solutions.”

– Olin Studios design team

perennials, and flowers which is generally formed on a natural slope and designed to temporarily hold and soak in rainwater runoff that flows from roofs, walkways, patios, and parking lots. Compared to a conventional garden, **rain gardens allow for 30 percent more water to soak into the ground.**)

Canal Park’s rain gardens serve as the **first level of natural filtration** before the rainwater is returned to the second cistern. Water is then treated and used for several purposes, **supplying ready to use water** for the ice rink, restrooms, and water features. This system allows Canal Park to target 10 out of 10 Water Efficiency points from the LEED scorecard through:

- 40 percent water use reduction
- Zero potable water use for irrigation
- Utilizing innovative wastewater technologies

Additionally, use of innovative wastewater technologies is a LEED Regional Priority Credit for the D.C. region. By using rainwater to flush the toilets, the project will earn an additional point for incorporating technologies that **reduce the use of potable water** for building sewage.

Another key innovative feature is the use of **geothermal energy**. A field of 28 geothermal wells was constructed under the ice rink, reducing the overall energy consumption needed to regulate the rinks temperature. Collectively, these innovations are forecasted to **reduce Canal Park’s overall energy use by 37 percent** (based on cost), and allows the project to target seven Energy + Atmosphere points from the LEED scorecard.

Sustainability + BIM

As the overall design incorporated several sustainable technologies that added to the complexity of the coordination and construction process, **Building Information Modeling (BIM) was used to streamline information and proactively solve problems**, while accurately understanding site conditions and design intent.

The south block of Canal Park **demanded meticulous attention to detail**. The numerous below-grade storm lines and drains that tie the rainwater collection system with the

surface rain gardens increased the congestion below the surface. For example, the rainwater collection system added extensive underground lines that had to be coordinated with existing utilities throughout the seven blocks, including 15 road crossings (where utilities are generally more heavily located). All collection lines were then gravity fed to the cistern.

As the site is an old industrial neighborhood, other challenges included navigating an uncommonly large 24” gas line and existing road utilities. BIM helped address these challenges by creating the project virtually before construction began. By determining project conditions, phasing and clarifying any coordination issues with the design team and subcontractors, DAVIS was able to integrate critical and sustainable thinking from the start—identifying unforeseen conflicts early while improving the construction delivery process. **B**

Lindsey Geiger, LEED AP BD+C, Sustainability Engineer

With Lindsey, environmental responsibility means good business. Her role as a Sustainability Engineer combines her incredible technical expertise with her demonstrated passion for sustainable construction. Lindsey develops, implements, and tracks corporate construction methods including requirements pertaining to Indoor Air Quality + Waste Management Plans. She works with project teams to make sure they have the most up to date information and tools necessary to efficiently implement sustainability processes in the field, and provides technical guidance on LEED projects.

Lindsey graduated with a Bachelor of Science in Civil Engineering from the University of Virginia + Master of Science in Environmental Engineering from Michigan Technological University. A DAVIS intern in 2005, Lindsey worked onsite at Potomac Yard (LEED Silver) and became a LEED AP that summer. Lindsey spent several years in Mali, West Africa serving as a Water + Sanitation Peace Corps Volunteer where her work was focused on appropriate design and sustainable practices.

How to Update Your Web Profile on the WBC Website

We have been working hard over the past year to create an enhanced web presence for WBC members and colleagues to access information and register for events.

Have you had an opportunity to visit the new WBC website and update your personal profile page? If not, please see the following six easy steps to access your My Profile Page and manage your individual profile.

Once logged in you can easily change your password and user ID, add a profile picture, and update your current contact and demographic information.

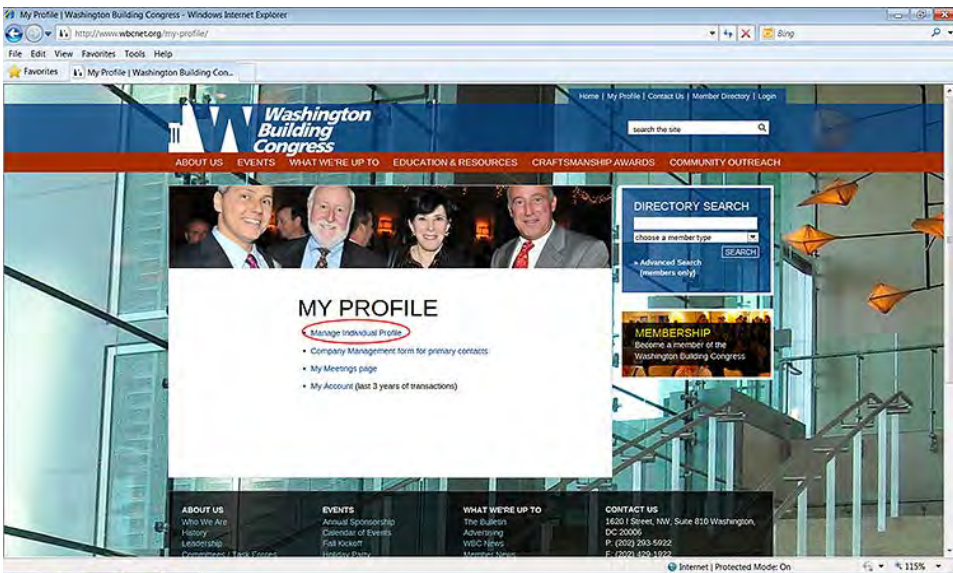
1 Go to the WBC website www.wbcnet.org



2 On the home page, click on **My Profile** located on top right navigation bar



3 Click on **Manage Individual Profile** on the My Profile Page

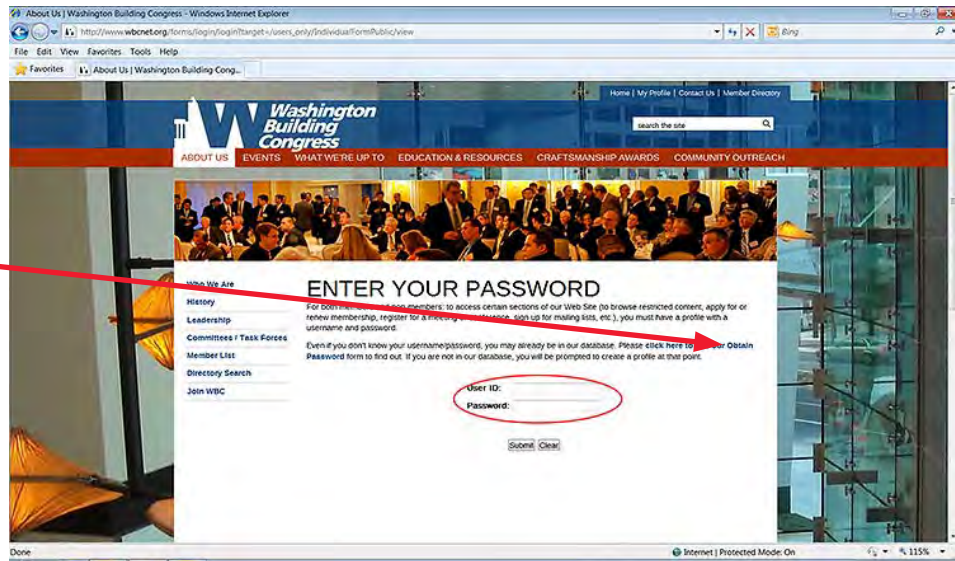


4 Enter your **User ID** and **Password**

NOTE:

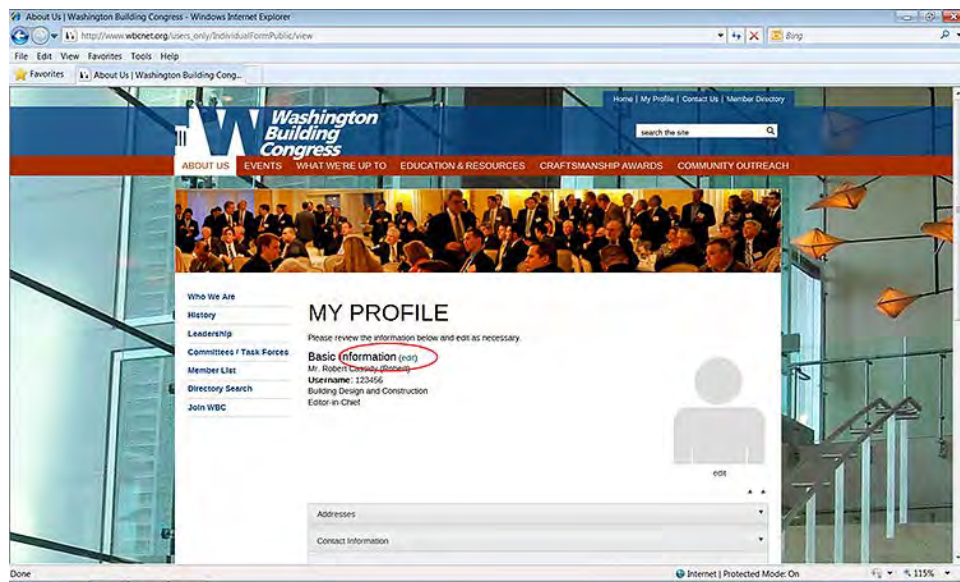
If you don't know your username/password, you may already be in our database. Please click on **Obtain Password** to find out if you are in our database or not.

If you are not in our database, you will be prompted to create a profile at this point.



5 On My Profile Page, click **Edit** on Basic information to update:

- Nickname
- Email
- Login Information: Username and Password
- Title



6 Also, on **My Profile Page**, you can update the following:

- Picture** – click on Edit under the silhouette in order to add your picture to your profile
- Addresses** – current address on file
- Contact Information** – organization and individual phone numbers
- Demographics** – professional designations, social networking, hammerheads (*) and background information
- My meetings** – list of upcoming meetings and recent meetings attended

(*) If you're under age 40, join us as a Hammerhead for special promotions and communications.

Member Projects



Rendering of Fort Irwin Replacement Hospital in San Bernardino, Ca.

WBC member **Turner Construction Company** was recently awarded a contract to build the **Hilton Garden Inn** – M Street in Washington, D.C. The site is located at 2201 M Street, NW, on land formerly occupied by the Nigerian Embassy and a second smaller retail building.

The \$30 million hotel will include 238 guestrooms and adopt only some of the standard prototype Hilton Garden Inn brand features in order to best address the 16,480 square-foot urban location and sophisticated neighborhood in which the hotel will be a part. The Hilton Garden Inn M Street will also contain a restaurant operated by a third party. The restaurant is set to be announced in the latter half of 2012 and constructed under the same contract as the hotel. The Hilton Garden Inn was awarded to Turner after an extensive proposal and presentation process.

Turner Construction Company was recently selected by the State of Maryland to provide CM at Risk services for the new **Youth Detention Center** located in Prince George's County, Md.

Scheduled for completion in 2015, Turner will provide construction management services during the design and construction of the project. The project involves the razing of a number of buildings on the site of the Cheltenham Youth Facility that are outdated and the

construction of a new 72-bed detention facility to house male juvenile offenders in need of secure care. The new 91,000 square-foot facility will contain housing areas, administration space, admissions/release, somatic and behavioral health areas, food service, education, recreation, and visitation/staff training. The facility is being designed and will be constructed to ensure the maximum ability to provide quality education to address the wide range of educational needs of the anticipated population, including regular education, special education, as well as career exploration. The facility will also allow for constant "direct supervision" by the staff of Cheltenham Youth Facility to ensure that the youth remain safe and secure.

The U.S. Army Corps of Engineers, Los Angeles District selected **Turner Construction Company** to build the **Fort Irwin Replacement Hospital** in San Bernardino, Ca. The new \$160 million hospital replaces the Weed Army Community Hospital, and marks a significant milestone in the United States Department of Defense commitment to delivering world-class healthcare to all service members and their families.

The project consists of a new 216,000 square-foot hospital providing tertiary care, emergency medicine, and clinical support. Additionally, the project includes the 9,000 square-foot

renovation of the existing Mary Walker clinic and construction of a helipad, ambulance shelter, central utilities plant, and photovoltaic farm which will provide sustainable energy to the hospital and ancillary buildings. The hospital's design utilizes evidence-based and world class design principles. The project will be designed and constructed to achieve LEED Platinum certification. When achieved, it will be the first healthcare facility in the Department of Defense to achieve LEED Platinum status.

Turner Construction Company recently broke ground on the new **National Intrepid Center of Excellence (NICoE) Satellite Center** at Fort Belvoir, Va. The new facility, which will be used to treat military service members with traumatic brain injuries and psychological health conditions, is part of a national campaign to construct up to nine identical facilities on major military bases across the US. These satellite facilities will extend the care of the main NICoE facility at Walter Reed National Military Medical Center in Bethesda, Md., a state of the art healing facility completed by Turner in June 2010.

The new \$11 million facility will include areas for psychiatric testing, chiropractic space, acupuncture, testing rooms, exam facilities, physical therapy areas, a sleep lab and multiple family areas for visiting and delivery of information. These centers are being located on major bases so that our service members affected by these traumatic brain injuries do not have to be separated from their units, families, and other support groups while they undergo diagnostics and treatment.

Maryland-based general contractor, **Grunley Construction Company, Inc.** (Grunley), has been awarded a \$54 million contract to renovate and fit-out three buildings and construct a new guardhouse at the **Embassy of the Federal Republic of Germany**. Two of the buildings slated for renovation—the Chancery and the Consular—were designed by one of Germany's most prominent architects, Egon Eiermann, in the 1960's. The eight-story Chancery Building is approximately 95,000 square feet. Grunley will perform a complete

Member Projects



Foulger-Pratt Contracting was selected by JBG Rosenfeld as the General Contractor for the Downtown Crown retail project.

upgrade of the mechanical, electrical and plumbing (MEP) systems; harden the structure; and conduct extensive fire proofing. The building shell will be improved by the installation of specialty windows coming from Germany. Grunley and Annen, the German window contractor, will work together in completing the Chancery's exterior envelope. At the Chancery Annex, Grunley will install a new sprinkler system and restore the existing finishes and surrounding grounds. Grunley will renovate the Consular building to house the German Visa counters, as well as a Welcome Center to the Embassy. The firm will also upgrade MEP systems, strengthen the structure, and restore the finishes within this building. Construction is already underway. The project is scheduled for completion in Fall 2013. The project owner is the Federal Republic of Germany, represented by the German Embassy.

Inova Health System selected WBC member **Clark Construction Group** to build the largest phase of its capital improvement program, the 665,000 square-foot **Inova Women's Hospital & Children's Hospital**. The \$215 million contract is part of Inova Health System's multi-year effort to upgrade its Fairfax campus into a world-class environment for patient care, education, and research.

The 12-story tower will contain 192 patient rooms on four floors, a 108-bed neonatal intensive care unit, 33 labor and delivery rooms, six C-section suites, and eight operating rooms. In addition to medical spaces, the project team will construct support areas, a ground-floor clinic, and a kitchen. The Inova Children's Hospital will occupy three floors of the building. The children's hospital will contain 116 private pediatric rooms and have its own dedicated entrance. The entire facility will connect to the campus' existing South Patient Tower

on the three lower levels. The hospital's cast-in-place concrete structure will be wrapped in an architectural precast skin with glazed curtain wall and ribbon windows. Custom entry canopies will greet all hospital visitors while green roofs and a healing garden enhance sustainability and provide natural respite.

The project includes construction of a new central utility plant and a central energy plant with two 1,800-ton chillers, cooling towers, and 13 custom air handling units to provide 3,300 tons of added cooling load. The hospital also will be equipped with three two-megawatt emergency generators with paralleling gear to provide continuous electricity in the event of an emergency. Construction began in September and completion is expected in September 2015.

GPI / Greenman-Pedersen, Inc., WBC member provided engineering design for the **Bennett Group Financial Services office space** in Washington, D.C.

Member Projects



The Foulger-Pratt Companies have finalized details for development and construction of the first Walmart store to be located in Washington, D.C.

The project was the recent winner of the 2012 NAIOP Maryland/DC Award of Excellence for its category (Best Interiors Professional Service/Institutional up to 10,000 SF). GPI also provided design services for the **Teknion Showroom** in Washington, D.C. which recently won a 2012 NAIOP Northern Virginia Jury Citation for Commercial Interiors. Teknion also achieved LEED Gold Certification.

WBC member **Foulger-Pratt Contracting** has been selected by JBG Rosenfeld as the General Contractor for the Downtown Crown retail project. The \$18 million award includes construction of the Phase I retail and parking portion of the Downtown Crown mixed-use development. The scope of work entails construction of four retail shell buildings totaling 101,500 square feet—including a new LA Fitness Gym—plus 20 acres of sitework, utilities, paving, hardscapes and landscaping. Additionally, Foulger-Pratt Contracting will construct a 154,000 gross square-foot, 5-story (6 parking level) precast parking garage to accommodate 456 cars. Construction

began in August 2012 and is scheduled for completion in late 2013.

The Foulger-Pratt Companies have finalized details for development and construction of the **first Walmart store** to be located in Washington, D.C. The new Walmart will be located in Ward 4 at the intersection of Georgia Avenue and Missouri Avenue in Northwest Washington. The 106,000 square-foot retail center will offer a full grocery store as well as general merchandise, parking for 349 cars and a loading dock.

During design and planning, Foulger-Pratt worked very closely with officials from Walmart and the District of Columbia, including Ward 4 Councilmember Muriel Bowser. Additionally, Foulger-Pratt pledged to provide job opportunities for local businesses, and has already hosted open house events to meet with local Ward 4 business representatives and subcontractors. Construction of the new store began in July 2012 and is slated to be completed in early fall 2013.



J.E. RICHARDS

INCORPORATED

ELECTRICAL CONTRACTORS

10401 Tucker Street

Beltsville, MD 20705

Phone: (301) 345-1300

Fax: (301) 345-2370

SERVING MD, VA & DC

New Members

Bohler Engineering

22636 Davis Drive
Suite 250
Sterling, VA 20164
p. 703-703-9500
f. 703-709-9501
www.bohlereng.com
jspina@bohlereng.com
Representatives: **Jessica Spina** and
David Nemecek

Jones Lang LaSalle Construction Company, Inc.

1801 K Street, NW
Suite 1000
Washington, DC 20006
p. 202-719-5000
www.jll.com
eric.kunkel@am.jll.com
Representative: **Eric Kunkel**

New Small Business Members

Holbert Apple Associates

3423 Olney-Laytonsville Road
Suite 6
Olney, MD 20832
p. 301-570-1460
f. 301-570-1462
www.holbertapple.com
dsmith@holbertapple.com
Representative: **David B. Smith P.E.**

Premier Consultants International, Inc.

1020 16th Street, NW
Suite 201
Washington, DC 20036
p. 202-319-1211
www.premiercon.com
rmarable@premiercon.com
Representatives: **Renard H. Marable** and
Hubert Bridges

New Small Business Profiles

Holbert Apple Associates

Holbert Apple Associates is an 11 person structural engineering firm exclusively offering structural engineering services for architectural and engineering projects. Founded in 2001 and based out of Olney, Md., we primarily serve the Washington, D.C. market.

Premier Consultants International, Inc.

Premier Consultants International, Inc. is a specialty trade contractor specializing in carpentry (millwork & casework), flooring, miscellaneous and ornamental metals, and installation, maintenance, and elevator repair.

New Representatives

Bricklayers & Allied Craftworkers Local 1

5879 Allentown Road
Camp Springs, MD 20746-4570
Robert Humbertson, Jr.

Chiaromonte Construction Company

605 Raleigh Place, SE
Washington, DC 20032-4221
p. 202-562-0027
f. 202-370-6480
www.cc-builder.com

Jill Burk

jburk@cc-builder.com

Octavious Green

ogreen@cc-builder.com

Kyle Rindone

krindone@cc-builder.com

Josh Russ

jruss@cc-builder.com

Walberto Ochoa

walberto@cc-builder.com

Forrester Construction Company

12231 Parklawn Drive
Rockville, MD 20852-1723
p. 301-816-1700
f. 301-816-1701
www.forresterconstruction.com

Tyler Swenor

tswenor@forresterconstruction.com

Brandon Ripley

briley@forresterconstruction.com

Shawn Poore

spoore@forresterconstruction.com

Fiona Coleman

fcoleman@forresterconstruction.com

Adnan Mamoon

amamoon@forresterconstruction.com

Froehling and Robertson, Inc.

22923 Quicksilver Drive
Suite 111
Dulles, VA 20166-2013
p. 703-996-0123
f. 703-996-0124
www.fandr.com
Shambi McGill
smcgill@fandr.com

HITT Contracting Inc.

2900 Fairview Park Drive
Falls Church, VA 22042-4513
p. 703-846-9000
f. 703-846-9110
www.hitt-gc.com
Karl Feldman
kfeldman@hitt-gc.com
Michelle Voce
mivoce@hitt-gc.com

Jones Lang LaSalle

1801 K Street, NW
Suite 1000
Washington, DC 20006-1303
p. 202-719-5000
f. 202-719-5001
www.jll.com

A.J. Greulich

a.j.greulich@am.jll.com

Jason Greaves

Jason.greaves@am.jll.com

K2 Construction Consultants, Inc.

4330 East-West Highway
Suite 320
Bethesda, MD 20814-4408
p. 301-656-2228
f. 301-656-0229
www.k2consulting.com

Bruce Neiswender

bneiswender@k2consulting.com

Mike Marcell

mmarcell@k2consulting.com

Kathy Yurkunas

kyurkunas@k2consulting.com

Kelly Generator & Equipment, Inc.

1955 Dale Lane
Owings, MD 20736-4323
p. 401-257-5225
f. 410-257-5227
www.kge.com

Amber Murphy

amurphy@kge.com

Shirley Ashton

sashon@kge.com

New Representatives

Milestone Construction Services, Inc.

21495 Ridgetop Circle
Suite 300
Sterling, VA 20166-6512
p. 703-406-0960
f. 703-406-0964
www.milestonconstruction.com
Christine Wu

Pierce Associates

P.O. Box 9050
4216 Wheeler Avenue
Alexandria, VA 22304-9050
p. 703-751-2400
f. 703-751-2479
www.pai.us
Lou Spencer
lspencer@pai.us

Power Design, Inc.

11600 Ninth Street North
St. Petersburg, FL 33716-2320
p. 727-210-0492
f. 727-497-1356
www.powerdesigninc.us
Jason Calvert
jasoncalvert@powerdesigninc.us

Power Services

5800 Woodcliff Road
Suite 108
Bowie, MD 20720-4878
p. 301-390-0800
f. 301-390-0501
www.powerservices.net
Mike Fones
mfones@powerservices.net
Rick Steele
rsteele@powerservices.net
Dave Hummer
dhummer@powerservices.net

The Severn Group, Inc.

2086 Generals Highway
Suite 200
Annapolis, MD 21401-6739
p. 301-858-7200
f. 410-349-8501
www.theseverngroup.com
Rick Dion
rdion@theseverngroup.com

Whiteford, Taylor & Preston, LLC

1025 Connecticut Avenue, NW
Suite 400
Washington, DC 20036-5410
p. 202-659-6800
f. 202-331-0573
www.wtplaw.com
Bob Kalinoski
rkalinowski@wtplaw.com



KELLY
GENERATOR & EQUIPMENT, INC.

The Mid-Atlantic Authorized Generac Industrial Dealer
Sales • Service • Parts • Rentals • Training

- Generator & Transfer Switch Sales • Generator Rentals
- Planned Maintenance Contracts • Parts Distribution • Load Banks
- Service of all makes of Standby Generators • Uninterruptible Power Supplies

GENERAC | **INDUSTRIAL POWER**

www.kge.com
1955 Dale Lane Owings, MD 20736 tel 410-257-5225 toll free 1-800-677-3815 fax 410-257-5227



Dynalectric
An EMCOR Company

Diversified Electrical Construction and Service Installations for Business and the Community

Dynalectric Company
22930 Shaw Road, Suite 100
Dulles, Virginia 20166
703/742-3500

Laurel Office
8101 Sandy Spring Road, Suite 260
Laurel, Maryland 20707
703/733-4168

◆ Commercial & Government Facilities
◆ Industrial & Institutional Projects
◆ BioMed & Lab Installations
◆ Data/Communication Centers
◆ Service Contracts
◆ Fire Alarm Testing & Retrofit
◆ 24-Hour Emergency Service
◆ Residential, Multi-Unit
◆ Design Assist/Design Build
◆ Traffic Signal Installation

Visit our website:
www.dynalectric-dc.com

WBC Calendar & Advertising Information

Events Calendar

September–November

September 27, 5:30–8 p.m.
75th Annual Fall Kickoff and Installation of Officers/Bull & Oyster Party
Columbia Country Club, Chevy Chase, Md.

October 20, 10 a.m.–12 p.m.
WBC Community Service,
Food & Friends, Washington, D.C.

October 25, 5:30–7:30 p.m.
Fall Networking
Biergarten Haus, Washington, D.C.

November 9, by 5 p.m.
Craftsmanship Awards Nomination
Submission Deadline
WBC Office

November 17, 10 a.m.–12 p.m.
WBC Community Service,
Food & Friends, Washington, D.C.

December 7, by 5 p.m.
Craftsmanship Awards Judges Sign-Up Deadline

December 11, 6–8:30 p.m.
Holiday Party
Congressional Country Club, Bethesda, Md.

December 15, 10 a.m.–12 p.m.
WBC Community Service,
Food & Friends, Washington, D.C.

January 10, 9 a.m.–5 p.m.
2013 Craftsmanship Awards Judging Day

2012 Editorial Calendar

The **Bulletin** covers issues of importance to the building industry, news about WBC members and information about upcoming events. The topics listed below will be covered as feature articles in upcoming issues of the **Bulletin**. Persons interested in contributing information or advertising should contact WBC before the third week of the month preceding the issue. The **Bulletin** is published ten times a year by WBC. To place an ad, submit material or for more information call **(202) 292-5922**.

October/ November 2011

New WBC Board and Chairman Profile

December/January

Member Giving

February/March

D.C. Sustainable Energy Utility

April/May

Craftsmanship Awards

June/July

Rebuilding Together

August/September

WBC Project Highlight

October/November

Green Building/Sustainability

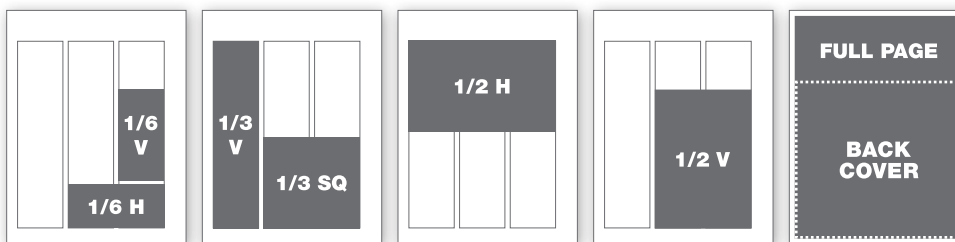
Ad Rates

	1 time	3 times	6 times
Member Rates:			
Black and White			
1/6 horizontal or 1/6 vertical	\$155	\$130	\$110
1/3 vertical or square	\$230	\$190	\$150
1/2 horizontal or vertical	\$430	\$350	\$290
Full-page	\$630	\$510	\$410
Color			
Inside Front Cover	\$730	\$590	\$480
Inside Back Cover	\$730	\$590	\$480
Back Cover	\$830	\$670	\$540

	1 time	3 times	6 times
Non-member Rates:			
Black and White			
1/6 horizontal or 1/6 vertical	\$210	\$176	\$149
1/3 vertical or square	\$311	\$257	\$203
1/2 horizontal or vertical	\$581	\$473	\$392
Full-page	\$851	\$689	\$554
Color			
Inside Front Cover	\$986	\$797	\$648
Inside Back Cover	\$986	\$797	\$648
Back Cover	\$1,121	\$905	\$729

Magazine trim size: 8.5" w x 11" h | Live area: 8.375" w x 10.875" h

Ad Sizes



1/6 horizontal	4.43" w x 2" h
1/6 vertical	2.1" w x 4.2" h
1/3 square	4.43" w x 4.2" h
1/3 vertical	2.1" w x 8.6" h
1/2 horizontal	6.75" w x 4.2" h
1/2 vertical	4.43" w x 6.38" h
Back Cover	8.0" w x 7.5" h
Full-page	8.25" w x 10.75" h
Full-page + bleed	8.5" w x 11" h +125" bleed



FOOD & FRIENDS®

Help prepare and package meals and groceries for delivery to more than 1,400 people living with HIV/AIDS, cancer and other life-challenging illnesses throughout the Washington area. Must be at least 14 years old to volunteer.

Third Saturday, Monthly
10 a.m. — Noon

219 Riggs Rd., NE, Washington, D.C.
www.foodandfriends.org

For more information and to register: www.wbcnet.org

WBC COMMUNITY SERVICES VOLUNTEER OPPORTUNITY

WBC NETWORKING

Oktoberfest

AT

Biergarten Haus

1355 H STREET, NE, WASHINGTON, D.C.

THURSDAY, OCTOBER 25, 5:30 – 7:30 PM

Biergarten Haus — A Taste of Bavaria on Capitol Hill

With its charming atmosphere, authentic food, live music, and, of course, genuine German beer on tap, Biergarten Haus is a slice of old-world Germany right on H Street NE. Enjoy a crisp Kolsch, a Cologne beer that dates back to the 1700s, or a rich Ayinger Celebrator Doppelbock from the heart of Bavaria. Pair either with the unforgettable taste of homemade Jager-Schnitzel and Kartoffelpuffer (potato pancakes) that will take you back to Oktoberfest all year long.

Please join us on for the Oktoberfest Networking party on October 19.

PRIVATE PARTY DECK, GREAT GERMAN FOOD, BIER AND NETWORKING!

Visit www.wbcnet.org for details