

# Bulletin

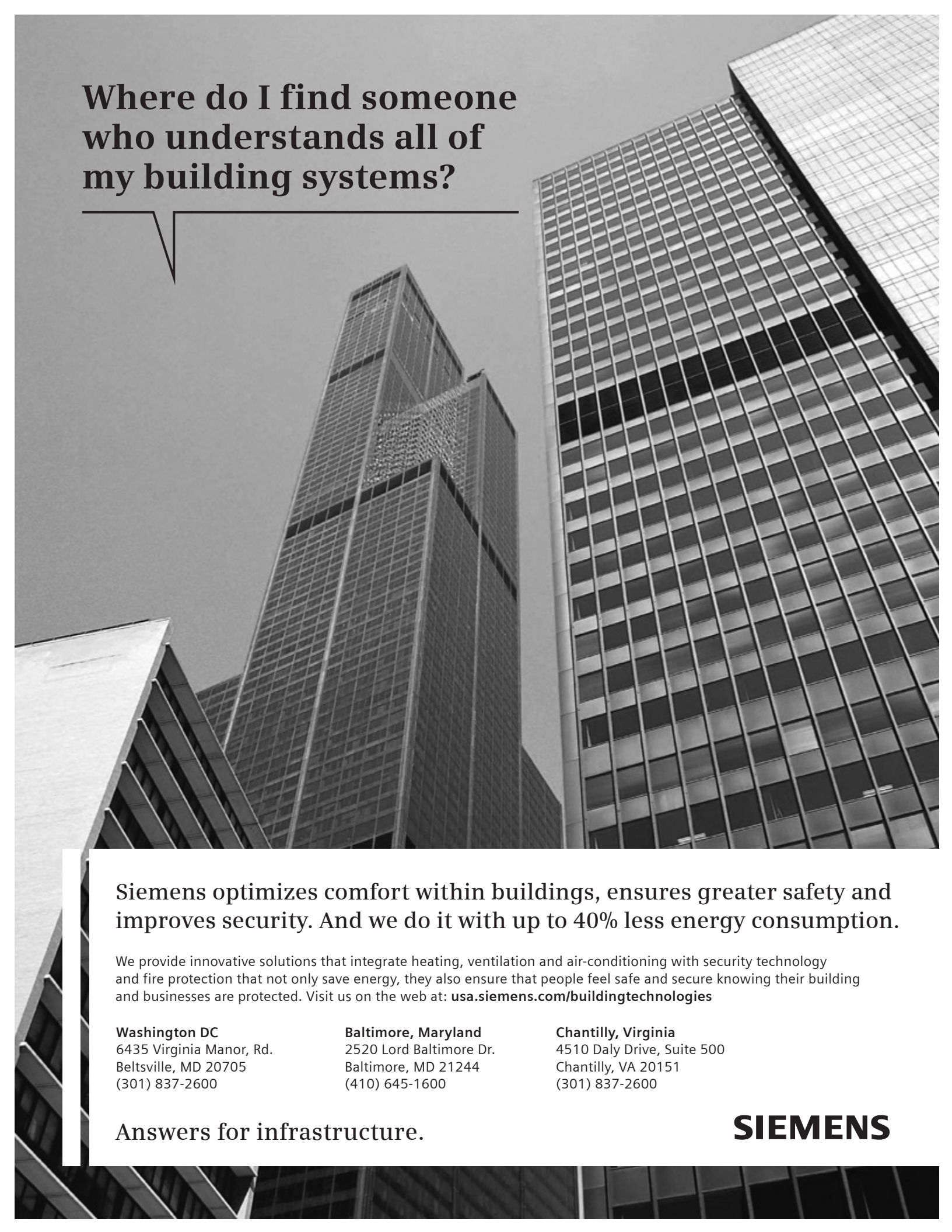
The Official Publication of the Washington Building Congress | **June/July 2012**

## Inside ▶

|                                |    |
|--------------------------------|----|
| Industry Report.....           | 2  |
| Rebuilding Together.....       | 6  |
| Sustainability Highlights..... | 11 |
| Member Projects.....           | 14 |
| New Members.....               | 16 |
| WBC Calendar.....              | 18 |







**Where do I find someone  
who understands all of  
my building systems?**

**Siemens optimizes comfort within buildings, ensures greater safety and improves security. And we do it with up to 40% less energy consumption.**

We provide innovative solutions that integrate heating, ventilation and air-conditioning with security technology and fire protection that not only save energy, they also ensure that people feel safe and secure knowing their building and businesses are protected. Visit us on the web at: [usa.siemens.com/buildingtechnologies](http://usa.siemens.com/buildingtechnologies)

**Washington DC**  
6435 Virginia Manor, Rd.  
Beltsville, MD 20705  
(301) 837-2600

**Baltimore, Maryland**  
2520 Lord Baltimore Dr.  
Baltimore, MD 21244  
(410) 645-1600

**Chantilly, Virginia**  
4510 Daly Drive, Suite 500  
Chantilly, VA 20151  
(301) 837-2600

**Answers for infrastructure.**

**SIEMENS**

# Bulletin

June/July 2012

Washington Building Congress is a nonprofit association made up of professionals from a variety of disciplines, all with an active interest or involvement in the Washington Metropolitan Area's real estate, design, and construction community. The organization was established in 1937 to represent the collective interests of its members by providing education and networking opportunities and by promoting the advancement of the building industry. For additional information about membership, joining a committee or the WBC Bulletin, call (202) 293-5922 or visit us on the web at [www.wbcnet.org](http://www.wbcnet.org).

**CHAIRMAN OF THE BOARD**

**Paul Mella**, Dynalectric Company

**CHAIRMAN-ELECT**

**Jim Klein**, The JBG Companies

**VICE CHAIRMEN**

**John Barron**, Foulger-Pratt Contracting

**Tamara McNulty**, Fox Rothschild LLP

**Joel Zingesser**, Grunley Construction Co., Inc.

**TREASURER**

**Joe Schall**, Pepco

**SECRETARY**

**Carl Hirrlinger**, James G. Davis Construction Corporation

**IMMEDIATE PAST CHAIRMAN**

**Chuck Asmar**, Asmar, Schor & McKenna, PLLC

**DIRECTORS**

**Mike Baruccheri**, Tishman Construction Corp.

**Dan Buckley**, Flippo Construction Co., Inc.

**Lynne Coville**, Boston Properties

**Michael Leavitt**, John Moriarty & Associates of Virginia, LLC

**Nicolas Pasanella**, Latitude 38 Real Estate LLC

**Karen Roberts**, Forrester Construction Company

**Steve Smithgall**, Balfour Beatty Construction

**Anne Marie Tombros**, Vango Construction Consulting

**PRESIDENT & CEO**

**Steven J. Kenton**, CAE

**ASSOCIATE DIRECTOR**

**Rita F. Reis**

**EDITOR/DESIGNER**

**David Irish / Frank Sheehan**, Frost Miller Group

*Bulletin is published 10 times a year by Washington Building Congress, Inc. Individual subscriptions are available for \$139 per year. The articles in this publication are the opinions of the authors and do not necessarily represent or reflect the policies or opinions of Washington Building Congress. Copyright 2012. All rights reserved.*



**Washington Building Congress**  
1620 I St., NW, Ste. 810  
Washington, DC 20006  
T: (202) 293-5922 | F: (202) 429-1922  
[www.wbcnet.org](http://www.wbcnet.org) | @WBCdc

## Chairman's Letter

### Dear Members and Colleagues:



In this issue of the *Bulletin* we are focusing on the April WBC 2012 Rebuilding Together Workday and the many dedicated individuals and firms who helped make this remarkable initiative successful—most notably, the Community Services Committee, House Captain and Vice-Chair Sarah Farrar (Mark G. Anderson Consultants), Chair Jeff Davidson, Volunteer Coordinator Steve Willmann (Mark G. Anderson Consultants), and Safety Coordinator Cheryl Moy (Perkins+Will).

The Community Services Committee took on another very gratifying Rebuilding Together project on April 28. The group successfully coordinated the efforts of more than 60 volunteers represented by 20 firms contributing over 400 volunteer hours. There was around \$40,000 of in-kind contributions from firms including Boston Properties, Dad's Appliances, Flippo Construction, HITT Contracting Inc., McCoy Associates, Mid-Atlantic Flooring, Sherwin Williams, and Tricon Construction. With the help of all involved, a very worthy homeowner in Alexandria is now enjoying a significantly improved quality of life. Congratulations to everyone involved with the Rebuilding Together project and a special thanks to this year's House Captain Sarah Farrar for her outstanding leadership and dedication!

Please also take a moment to review the 75<sup>th</sup> annual WBC Golf Outing section recognizing our outstanding sponsors and tournament winners. Over 350 industry supporters came out for a perfect day in the sun followed by an awesome awards reception at The Golf Club at Lansdowne. Thank you to the Golf Outing Committee, Co-Chairs Steve Skinner (Suffolk Construction) and Mike Sloan (BE&K Building Group), and Board Liaison Mike Baruccheri (Tishman Construction Corporation), whose valuable time and effort really paid off this year.

The WBC Spring Networking and Architects Showcase were held on May 31 at Spider Kelly's in Arlington. Many thanks to our Showcase Hosts BB&B Architects & Planners, David M. Schwarz Architects, Gordon Landscape Architecture, HKS Architects, KGD Architects, Rippeteau Architects, Wisniewski Blair & Associates, and WDG Architecture. This exceedingly successful event was put together by the Program and Education Committee, Chair Kevin Coyne (Exponent), Vice-Chair Charley Huntley (Bowman Consulting) and Board Liaison Jim Klein (The JBG Companies). Please be sure to join us for the Summer Networking event at Cactus Cantina on August 16.

The 75<sup>th</sup> annual Fall Kickoff Installation and Bull and Oyster Roast will be held on September 27 at Columbia Country Club. The Nominating Committee is seeking recommendations for FY'13 Board members who will take office on October 1. Nominations are due no later than Friday, August 17. An official notice will be distributed at the end of August announcing the slate of FY'13 candidates. The election of the new Board of Directors will take place during annual membership meeting at the WBC Fall Kick-off. This year's Nominating Committee will be chaired by Past Chairman of the Board Chuck Asmar. Please mark your calendars now for the Fall Kickoff Bull & Oyster Party on September 27.

I look forward to seeing you at Cactus Cantina on August 16 or another upcoming event. Thank you for your active participation and ongoing support of the WBC!

Best regards,

**Paul Mella**  
WBC Chairman of the Board

2012 Corporate Sponsor







The 2012 graduates of the Electrical Alliance's Joint Apprenticeship Training Committee (JATC) electrical apprenticeship program.

## 157 People Graduate from Electrical Apprenticeship Program

One hundred fifty seven men and women graduated from the Electrical Alliance's Joint Apprenticeship Training Committee (JATC) electrical apprenticeship program and became Journeyman Electricians. Among them, 23 are veterans.

Unlike many of their contemporaries graduating from colleges this year, all these graduates will immediately step into high paying jobs in the Washington, D.C. region construction industry. One hundred forty graduated the JATC's five-year Inside Wireman program and an additional 17 graduated from the three-year Residential Upgrade program. As Journeyman Electricians, they will earn \$81,000 a year plus benefits.

The apprenticeship is a challenging program that combines classroom learning with on-the-job experience – all while being paid. Each year the JATC receives more than 3,000 ap-

plications for the program and generally accepts about 10 percent of them.

## Centennial Contractors Enterprises Receives Awards

Centennial Contractors Enterprises was honored with a regional Harry H. Mellon Award of Excellence in Job Order Contracting (JOC). It was named the 2011 Southeast Region Winner for its work on a Mission Critical Multi-Vehicle Charging Station for the Georgia National Guard.

The Georgia National Guard recently acquired two Medical Emergency Response Vehicles (MERVs). The MERVs contain sensitive electronic equipment and medications that are sensitive to climate and direct sunlight so they need to be connected to Shore Power when not in use. The National Guard needed a Multi-Vehicle Charging Station with power and overhead lighting to maintain the MERVs. Using the State of Georgia eZIQC contract, the National

Guard hired Centennial Contractors, whose project team quickly scoped, constructed and equipped the charging station under tight time constraints.

Centennial was also recently awarded the prestigious Dwight D. Eisenhower Award for Excellence in Construction by the U.S. Small Business Administration (SBA). The award recognizes large prime contractors who have excelled in their utilization of small businesses as suppliers and subcontractors.

Centennial, a national contractor with offices throughout the United States, is an industry leader in Job Order Contracting. It actively conducts outreach to enhance the skill levels of small business so they can compete for significant work on their own with significant roles for future projects through its functional leads in program management, operations, safety, contracts, human resources, information technology and business development providing assistance, instruction and guidance.

SBA Administrator Karen Mills recently presented the award

to Centennial during the official National Small Business Week award ceremony in Washington D.C. National Small Business Week recognizes outstanding small business owners and advocates for their achievements and contributions to the nation's economic and social vitality.

## Association Executives Acquire Resources for International Event Launch

Association executives walked away with strategic lessons in international event planning when Frost Miller Group (FMG) hosted a session at ASAE's 2012 International Association Conference on May 3rd.

The international session took place May 3rd, at the 2012 Association International Conference at the Walter E. Washington Convention Center in Washington, D.C. Frost Miller's Chief Account Strategist



Barbara Myers

event together in the Middle East for the first time, with a loose concept and under a very aggressive timetable.



Kevin Miller

Communications Officials (APCO) International's chief operating officer. She received event support from Miller, as FMG is APCO's marketing partner. Together, they delved into pre-event strategy implications and the critical resources that helped through the



**GRUNLEY**  
Building on Tradition  
General Contractor | Design/Builder | Construction Manager

Reaching new heights in building construction

15020 Shady Grove Road, S-500 | Rockville, MD 20850 | 240.399.2000 | www.grunley.com



# Industry Report



**J.E. RICHARDS**  
10401 Tucker Street  
Beltsville, MD 20705  
Phone: (301) 345-1300  
Fax: (301) 345-2370

**INCORPORATED**  
**ELECTRICAL CONTRACTORS**

**SERVING MD, VA & DC**



**Dynalectric**  
An EMCOR Company

**Diversified Electrical Construction  
and Service Installations  
for Business and the Community**

**Dynalectric Company**  
22930 Shaw Road, Suite 100  
Dulles, Virginia 20166  
**703/742-3500**

**Laurel Office**  
8101 Sandy Spring Road, Suite 260  
Laurel, Maryland 20707  
**703/733-4168**

Visit our website:  
[www.dynalectric-dc.com](http://www.dynalectric-dc.com)

- ◆ Commercial & Government Facilities
- ◆ Industrial & Institutional Projects
- ◆ BioMed & Lab Installations
- ◆ Data/Communication Centers
- ◆ Service Contracts
- ◆ Fire Alarm Testing & Retrofit
- ◆ 24-Hour Emergency Service
- ◆ Residential, Multi-Unit
- ◆ Design Assist/Design Build
- ◆ Traffic Signal Installation




planning process, ultimately leading to APCO's success.

### Three Ober|Kaler Lawyers Named D.C. "Super Lawyers"

The law firm Ober|Kaler announced **William E. Berlin**, **Patrick K. O'Hare** and **Barbara G. Werther** of the firm's Washington, D.C. office have been named to the 2012 edition of DC Super Lawyers.

*Super Lawyers* is a ranking of outstanding lawyers from over seventy practice areas who have attained a high-degree of peer recognition and professional achievement. The selection process is multi-phased and includes independent research, peer nominations and peer evaluations.

Berlin is ranked in the Health Care practice area. He is a principal in Ober|Kaler's Antitrust and Competition, Litigation and Health Law Groups and devotes his practice to antitrust litigation

and counseling, representing hospitals, health systems, health insurance plans, physicians and other health care entities.

O'Hare also appears in the Health Care practice area. A principal in the firm's Health Law and Nonprofits Groups, he focuses on health care transactions, business and tax planning, joint ventures and other relationships among hospitals and between physicians and hospitals. He also handles the general representation of nonprofit corporations and serves as general counsel to several national charities. O'Hare has been selected for *Super Lawyers* every year since 2007.

Werther is ranked in the Government Contracts practice area. She is a principal in Ober|Kaler's Construction Group and has more than 30 years of experience in construction and government contracts law. She has represented contractors and owners in disputes over claims for delays, acceleration, inefficiencies, default terminations and construction catastrophes, both in the private sector and on public projects. She has also represented sureties and contractors in bond disputes, and has represented government contractors in False Claims Act cases. Werther is co-founder of the annual Women in Construction Conference.

### FMG's Chief Account Strategist Appointed as ASAE Council Member

Frost Miller Group's (FMG) **Barbara Myers**, CAE has been selected to serve on ASAE's Marketing Section Council for a one-year term, beginning at ASAE's 2012 Marketing, Membership and Communications Conference in May.

ASAE's Marketing Section Council is a group of thought leaders in association marketing who in concert with staff assists in the implementation of ASAE's work plan as well as guides and recommends activities for ASAE's professional interest section for marketing professionals.

Myers' selection is supported by her more than ten years of managerial

experience in the nonprofit sector and her current position as chief account strategist at FMG, an integrated marketing communications firm.

At Bethesda, MD-based Frost Miller, Myers oversees the strategy and execution of work for FMG's current association accounts and its clients who target associations. She also focuses on building new client relationships.

Previously, Myers served as chief operations officer of the Association of Public-Safety Communication Officials (APCO) International. Prior to becoming COO, Myers was the director of membership, events and corporate outreach, and also spent several years managing the association's domestic and international tradeshows and events.

For fiscal-year 2013, the Council's responsibilities include reviewing and promoting an association marketing publication, assisting ASAE staff in educational topics for the annual Marketing, Membership and Communications Conference, promoting and serving as judges of Gold Circle Awards, and identifying opportunities for ASAE of professional marketing relevance to be disseminated to ASAE's membership.

As part of the ASAE Marketing Section Council, Myers will participate in monthly meetings and attend two in-person meetings. The kick-off meeting on May 22, 2012, at ASAE's Marketing, Membership, and Communications Conference marked the start of Myers' term.

---

## Foulger-Pratt Contracting Ranked Seventeenth by Washington Business Journal

---

Foulger-Pratt Contracting has once again been ranked on the Washington Business Journal's Top 25 General Contractors list. The latest list, ranked by 2011 revenues, places Foulger-Pratt Contracting as #17, an improvement of our previous #19 ranking based on 2010 revenue.

Foulger-Pratt Contracting has recently broken ground on several new

and exciting projects including The Exchange at Wheaton Station, a large transit-oriented development with 486 residential units over a Safeway grocery store plus other retail; Citron Apartments featuring 222 units; and the Rockville Metro Plaza II Class A Office building which is the future headquarters for Choice Hotels International, and was recently honored by the Washington Business Journal as the Best Real Estate Deal of 2011.

---

## Mona Electric Group, Inc. Announcements

---

**Vincent "Cap" Mona**, Chairman of the Board of Mona Electric Group, Inc., is the 2012 recipient of the Catholic Business Network (CBN)-Home Town Hero Award. Mona accepted the award during CBN's April 30th banquet, hosted at the Greenbelt Marriott, by the CBN Network of Prince George's County. A 40-year resident of Prince George's County, Mona is known for his philanthropic spirit locally and across the country. As the founder of Christmas in April, in Prince George's & Charles Counties, "Cap" Mona has been serving the community by assisting families in need since 1988. Mona proudly accepted the honor of the Home Town Hero Award as he recalled the importance that a Catholic education had in his life. Mona continues to support the education of local youth via his many personal contributions and scholarship vehicles, such as the Susan and Andrew Mona Foundation.

Mona Electric Group, Inc. named **Alan Freund**, Chief Financial Officer. As CFO, Freund will ensure that the financial operations of Mona Electric are producing desired results. He will oversee the financial activities of the company, helping to balance profits and mitigate risk. Freund holds a Master's in finance and has held financial executive positions in the electrical & energy Industries for 30 years. **Dave McKay**, president & CEO, is pleased to welcome Freund and is excited about the

expertise and knowledge that Freund brings to Mona Electric Group, Inc.

---

## Michael Mock joins the Electrical Alliance as Vice President of Industry Development

---



Michael Mock

The Electrical Alliance adds recognized marketing and business development expert **Michael Mock** as vice president of industry development.

As vice president, Mock is responsible for generating commercial/institutional contracting opportunities for electrical contractors. He will form building industry organization and individual buyer relationships of all types of electrical services, educate the construction industry on the advantages of utilizing Electrical Alliance contractors, and create contracting opportunities with specific potential clients.

Mock's commercial building, real estate, and construction industry expertise is backed by his more than 20 years experience, most recently serving as a strategic consultant for Maryland-based Performance Rx. Previously, Mock held the roles of vice president of business development at Morgan-Keller Construction, and Lehigh Portland Cement Company's Mid-Atlantic vice president and sales manager.

At Morgan-Keller, he directed sales staff and oversaw client relationship management, target marketing, advertising and public relations. At Lehigh, Mock managed sales distribution and operations on the East Coast for six years. In his early career, he worked as a carpenter. **B**

---

## On the Move

WBC member Coakley & Williams Construction, Inc., has moved to new offices at 7475 Wisconsin Avenue, Suite 900, Bethesda, MD 20814. Their phone is 301-963-5000 and fax is 301-963-9779.



## Rebuilding Together



## WBC 2012 Rebuilding Together Project

### WBC Community Workday a Huge Success!

**W**ashington Building Congress members and colleagues proudly participated in the 24th annual Rebuilding Together National Workday on Saturday, April 28. Special thanks go to House Captain Sarah Farrar (Mark G. Anderson Consultants), Safety Coordinator Cheryl Moy (Perkins & Will), Volunteer Coordinator Steve Willmann (Mark G. Anderson Consultants), and the Community Services Committee and Chair Jeff Davidson. This group once again went well beyond the typical scope of work to accomplish this rewarding mission.

Thank you also to all of the outstanding volunteers and supporters of this annual WBC community service project. Special recognition is also in order for Flippo Construction Company and Dan Buckley for taking on the significant exterior drainage and grading work on the project.

Rebuilding Together, a non-profit organization devoted to rebuilding communities and preserving affordable housing, is the nation's leading nonprofit group working to preserve affordable homeownership and revitalize communities across the country. The organization has over 200 affiliates with thousands of volunteers who every year rehabilitate and improve the homes of low-income people at no cost. Recipients of Rebuild-

ing Together services include the elderly, disabled, military veterans and families in need.

Community Services Committee Vice-Chair Sarah Farrar was nominated to serve as House Captain and organized an impressive team of 62 volunteers for the workday. Due to the amount of work involved with the project, many tasks were started prior to and will be finished following the project workday. Work on the house included two new accessible doors, extensive drainage/grading enhancements, drywall repair, carpet/flooring upgrades, new drop ceiling tiles, interior/exterior painting, entry handrail replacement, dishwasher repair, a new range, electrical work, extensive yard cleanup/landscaping, and more!

Rebuilding Together is the leading national volunteer organization working in partnership with communities to rehabilitate owner-occupied low-income housing. Nationally, Rebuilding Together programs have rehabilitated over 115,000 homes and non-profit facilities using almost 2.7 million volunteers. Rebuilding Together provides home repairs free of charge and gives priority to those low-income households with older adults, persons with disabilities or families with children.

With the efforts of more than 60,000 community volunteers, Rebuilding Together Arlington/Fairfax/Falls Church has repaired over 2,600 homes and non-profit facilities since it became involved with the program in 1988. This neighbor-helping-neighbor approach unites more than 2,000 skilled and unskilled volunteers from diverse backgrounds with low-income homeowners and non-profit organizations each year. Volunteers are able to make both major and minor repairs and renovations that result in life changing improvements for the homeowners and organizations served.

For more information on the Rebuilding Together program, please go to [www.wbcnet.org](http://www.wbcnet.org) or [www.rebuildingtogether.org](http://www.rebuildingtogether.org). **B**

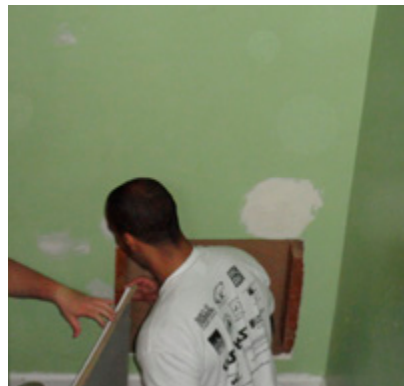








# Rebuilding Together



Thanks Again to Our 2012 Rebuilding Together Volunteers and Donating Companies!

## Volunteers

### Asmar, Schor & McKenna

Chuck Asmar  
Emily Cicero  
Catherine Trifiletti

### Balfour Beatty Construction

Erik Collins  
Sara Collins

### Boston Properties

Lynne Coville  
Susan Craig  
Rukshani Fernando  
Peter Johnson  
Cecilia Key  
Jon Kurtis  
Blake Levy  
Sam Orr  
Pete Otteni  
Evan Polk  
Ray Ritchey  
Matt Ruiz-Stupi  
Barney Silver

### Children's National Center

Molly Alston

### Dynalectric Company

Gabriel Jahn  
George Morantis

### Flippo Construction Company

Louis Arroyo  
Dan Buckley  
Joel Koziol  
Bernard Roddy

### HITT Contracting Inc.

Jamshid Banahi  
Zach Cohoon  
Sebastian Cordoba  
Rebecca Cornell  
Chris Deraleau  
Drew Mucci  
Bernie Potere  
Marcia Potere  
Laila Sharafi  
Luis Sirotzky, Jr.

Patricia Velasquez  
Michele Voce

### The Lane Construction Corp.

Cody Fagan  
John Roddy  
Kathryn Roddy

### LSM

Kent Fee  
Erin Flynn  
Helen Tanous  
Tanja Werner  
Josh Winter

### McCoy Associates

Jane Cherney

### Mark G. Anderson Consultants, Inc.

Sarah Farrar  
Steve Willmann

### Perkins+Will

Tim Bakos  
Jamie Krissoff  
Cheryl Moy

### Professional Service Industries (PSI)

Jeff Davidson  
Andy Richmond

### Tishman Construction Corp.

Debby Yaga

### WBC

Steve Kenton  
Rita Reis

### Donating Companies

**Boston Properties**  
*breakfast & lunch*

### Dad's Appliances

*new stove*

### Flippo Construction Company

*labor and materials for yard grading/drainage*

### Kent Fee

*cash donation*

### McCoy Associates

*cleaning supplies*

### Mid-Atlantic Flooring

*carpet and supplies*

### Sherwin Williams

*paint and supplies*

### Tricon Construction

*ceiling tile*



# Golf Outing



## 2012 Golf Outing Winners

**Belmont Course**  
**1st Place:** Capital Tristate - Team 2  
**2nd Place:** J.E. Richards, Inc. - Team 3  
**Closes to the Pin Contest:** Blane Smith  
**Longest Drive Contest:** Jamie Hart  
**Putting Green Contest:** Brian Donnellan

**Jones Course**  
**1st Place:** Maurice Electric Supply  
**2nd Place:** Precision Wall Tech  
**Closes to the Pin Contest:** Rich Ednie  
**Longest Drive Contest:** Patrick Martel  
**Putting Green Contest:** Scott Vossler

**Norman Course**  
**1st Place:** Watkins Meegan - Team 1  
**2nd Place:** Foulger-Pratt Contracting & Bohler Engineering Team  
**Closes to the Pin Contest:** Rob Suit  
**Longest Drive Contest:** Brian Simpson  
**Putting Green Contest:** Todd Scales

**50/50 Raffle**  
 Bryan Frady

## Golf Outing



### 2012 Golf Outing Sponsors

#### Tournament Sponsor

Siemens Industries

#### Golfer Gift Sponsor

Suffolk Construction Company

#### Reception Food/Bars Sponsor

Dynalectric Company

#### Golf Cart Sponsors

Capital Tristate Electrical Distributor  
Chiaromonte Construction Company  
FoulgerPratt Contracting  
SIGAL Construction Corporation

#### Lunch Food Station Sponsors

Balfour Beatty Construction  
Forrester Construction Company  
HITT Contracting Inc.  
KBR Building Group  
Manhattan Construction Company  
PEPCO

#### Closesttopin Sponsors

PerLetric, Inc.  
U.S. Engineering Company  
Washington Marriott Wardman Park

#### Longest Drive Sponsors

Hensel Phelps Construction Co.  
Watt, Tieder, Hoffar & Fitzgerald, LLP

#### Putting Green Sponsors

Graybar Electric, Inc.  
The JBG Companies

#### Driving Range Sponsors

Cummins Power Systems  
Donohoe Construction Company

#### Cooler Sponsors

Asmar, Schor & McKenna, PLLC  
Flippo Construction Company  
Goldin and Stafford

#### Hole Sponsors

Boatman and Magnani, Inc.  
CENTRIA Architectural Systems  
Clark Construction Group, LLC  
Critical Power Group  
Dominion Mechanical Contractors  
DPR Construction  
ECS MidAtlantic, LLC  
Exponent  
Freestate Electrical Companies

#### Frost Miller Group

Grunley Construction Company  
Honeywell  
J.E. Richards, Inc.  
John E. Kelly & Sons Electrical Construction  
John H. Hampshire, Inc.  
John Moriarty and Associates  
The Justin Company  
Manganaro MidAtlantic, LLC  
Maurice Electric Supply Co.  
McManus Darden & Felsen LLP  
PelBern Electrical Construction  
Precision Wall Tech, Inc.  
Rippeteau Architects, PC  
Rutherford  
Scaffold Resource LLC  
SK&A Structural Engineers  
Southland Industries  
Specified Electrical Systems, LLC  
T.A. Beach Corp.  
Tishman Construction Corporation  
Washington Gas  
Watkins Meegan LLC

#### Volunteers

Rebecca Ballard, Nicole Detweiler, Julie Forsht, Kent Larson, Jeff Rees, Michelle Voce and Paul Whaley.



# Sustainable Building Online Resources



## Sustainability Highlights

### LEED

LEED, or Leadership in Energy and Environmental Design, provides building owners and operators with a framework for identifying and implementing practical and measurable green building design, construction, operations and maintenance solutions. LEED certification provides independent, third-party verification that a building, home or community was designed and built using strategies aimed at achieving high performance in key areas of human and environmental health: sustainable site development, water savings, energy efficiency, materials selection and indoor environmental quality. Developed by the U.S. Green Building Council (USGBC) in 2000, the LEED rating systems are developed through an open, consensus-based process led by LEED committees.

- **Rating Systems** <http://www.usgbc.org/DisplayPage.aspx?CMSPageID=222>
- **LEED Project Case Studies** <http://www.usgbc.org/DisplayPage.aspx?CMSPageID=2359>
- **LEED Professional Credentials** <http://www.usgbc.org/DisplayPage.aspx?CMSPageID=2613>

### Local Utility Energy Efficiency Rebate/Incentive Programs

#### Maryland

The EmPOWER Maryland Energy Efficiency Act of directs the Public Service Commission to require each affected electric company to provide ratepayers cost-effective energy efficiency and conservation (“EE&C”) programs and services designed to achieve targeted per capita energy reductions of at least 5% by the end of 2011 and 10% by the end

of 2015 compared to 2007 per capita energy consumption. The Act also requires each electric company to implement a cost-effective demand response (“DR”) program designed to achieve a targeted reduction in per capita peak electricity demand of at least 5% by the end of 2011. Together, the EE&C and DR programs are known as Demand Side Management (“DSM”) programs.

The following links take you to each utility’s DSM programs for commercial customers. These programs offer rebates and incentive to energy consumption and/or reduce grid connected load for both residential and commercial customers.

- **Pepco** <https://cienergyefficiency.pepco.com/Overview.aspx#overview>
- **BGE** <http://www.bgesmartenergy.com/>
- **Allegheny Power (Potomac Edison)** <http://www.alleghenypower.com/EngConserv/MDBus/BusEECmd.asp>
- **DelMarVa Power** <https://cienergyefficiency.delmarva.com/>
- **SMECO** <http://www.smeco.coop/saveEnergy/businessSolutions.aspx>

#### District of Columbia

The Clean and Affordable Energy Act of 2008 (CAEA) requires the Mayor, through DDOE, to contract with a private entity to conduct sustainable energy programs on behalf of the District of Columbia. The CAEA authorizes the creation of a Sustainable Energy Utility (SEU) and designates the SEU to be the one-stop resource for energy efficiency and renewable energy services for District residents and businesses. The District of Columbia Sustainable Energy Utility (DC SEU) is designed to help District households, businesses, and institutions save energy and money through energy efficiency and renewable energy programs. Led by the Sustainable Energy Partnership, the DC SEU is committed to community engagement, economic development, job creation, and environmental preservation. DC Sustainable Energy Utility is a project of the Sustainable Energy Partnership under contract to the District Department of the Environment (DDOE).

- **DC SEU** [http://dcseu.com/programs/for\\_your\\_business.aspx](http://dcseu.com/programs/for_your_business.aspx)

#### Virginia

On March 24, 2010, Dominion Virginia Power received approval from the Virginia SCC for a voluntary energy efficiency plan. In April 2010, Dominion officially launched the programs for customers to enroll. This portfolio of five energy efficiency and peak-shaving programs is designed to meet the needs of our customers and move us towards meeting the state’s 10 percent voluntary energy conservation goal enacted by the Virginia General Assembly and the governor. It provides environmental benefits in a cost-effective manner that translates into financial savings to customers.

- **Dominion Virginia Power** <http://www.dom.com/dominion-virginia-power/customer-service/energy-conservation/ec-programs.jsp>

### State Energy/Environmental Offices

#### Maryland

The Maryland Energy Administration’s (MEA) mission is to assist Maryland citizens and businesses to save money through smart investments in energy efficiency, renewable energy, and conservation. MEA fuels the creation of green jobs by providing funds and resources to expand the use and availability of clean, safe energy in Maryland.

- <http://energy.maryland.gov/>

#### Delaware

The Division of Energy & Climate’s mission is to serve the people of Delaware by reducing the adverse impacts of energy use on our environment, health, and economy. We educate, lead by example, and build partnerships to increase energy efficiency and renewable energy, promote sustainable growth, and prepare for a changing climate. The Division of Energy & Climate (DE&C) includes the Delaware Energy Office.

- <http://www.dnrec.delaware.gov/energy/Pages/default.aspx>

## District of Columbia

The District Department of the Environment (DDOE) is the leading authority on energy and environmental issues affecting the District of Columbia. Using a combination of regulations, outreach, education, and incentives, our agency administers programs and services to fulfill our mission. We work collaboratively with other government agencies, residents, businesses, and institutions to promote environmentally responsible behavior that will lead to a more sustainable urban environment.

- <http://ddoe.dc.gov/>

## Virginia

The Virginia Department of Mines, Minerals and Energy (DMME) serves a large and varied group of people, organizations and agencies throughout the Commonwealth. Through its six divisions, the agency regulates the mineral industry, provides mineral research and offers advice on wise use of resources. Its programs directly serve the citizens who live near mining operations, mining labor groups, other regulatory agencies, the educational community, the mineral industry, and environmental, consumer and industry special-interest groups.

The primary goal of the Division of Energy is to advance sustainable energy practices and behaviors. To achieve this goal, the Division of Energy works to:

- Increase the use of proven energy conservation practices in Virginia;

- Foster growth of emerging and sustainable energy industries and infrastructure;

- Identify applications of new and innovative energy technologies in Virginia;

- Advance partnerships that will enable energy efficiency and economic development opportunities;

- Improve the energy efficiency of commercial, institutional, and residential buildings in Virginia; and

- Provide energy education and outreach to Virginians to increase

their ability to make informed energy choices.

- <http://www.dmme.virginia.gov/>

## *DSIRE™ Database of State and Federal Incentives for Renewables and Efficiency*

DSIRE is a comprehensive source of information on state, local, utility and federal incentives and policies that promote renewable energy and energy efficiency. Established in 1995, the Database of State Incentives for Renewables & Efficiency (DSIRE) is an ongoing project of the North Carolina Solar Center and the Interstate Renewable Energy Council (IREC). It is funded by the U.S. Department of Energy's Office of Energy Efficiency and Renewable Energy (EERE), primarily through the Office of Planning, Budget and Analysis (PBA). The site is administered by the National Renewable Energy Laboratory (NREL), which is operated for DOE by the Alliance for Sustainable Energy, LLC.

- <http://www.dsireusa.org/>

## *Federal Income Tax Credits for Commercial Energy Efficiency*

Please note, not all ENERGY STAR qualified products qualify for a tax credit. ENERGY STAR distinguishes energy efficient products which, although they may cost more to purchase than standard models, will pay you back in lower energy bills within a reasonable amount of time, without a tax credit.

- Tax Credit: 30% of cost with no upper limit.
- Expires: December 31, 2016.
- Details: Existing homes & new construction qualify. Both principal residences and second homes qualify. Rentals do not qualify.
- Technologies:
  - Geothermal Heat Pumps
  - Small Wind Turbines (Residential)
  - Solar Energy Systems
  - Solar Water Heaters
  - Photovoltaic
  - Fuel Cells (Residential Fuel Cell and Microturbine System)
  - Tax Credit includes installation costs.

- [http://www.energystar.gov/index.cfm?c=tax\\_credits.tx\\_index](http://www.energystar.gov/index.cfm?c=tax_credits.tx_index) 



WBC  
**BULL & OYSTER**  
 PARTY

SEPTEMBER 27, 2012 5:30 – 8 PM

COLUMBIA COUNTRY CLUB  
 7900 CONNECTICUT AVE., CHEVY CHASE, MARYLAND

BUSINESS ATTIRE PLEASE – JACKET REQUIRED BY CLUB

BULL AND OYSTER FEAST  
 WBC ANNUAL MEMBERSHIP MEETING  
 ELECTION OF FY' 2013 OFFICERS AND DIRECTORS  
 INTRODUCTION OF NEW MEMBERS



---

# FY'2013 WBC Board of Directors Nominations

---

**TO: Washington Building Congress Members**

**FROM: Chuck Asmar, Nominating Committee Chairman**

The WBC Nominating Committee is seeking the recommendation of dedicated members who would like to make a contribution to the overall goals and objectives of our association. The committee has developed the following brief nomination form to encourage membership participation in the process.

Please submit your nominations on this form by Friday, August 17, 2012. The election of FY'2013 WBC officers and directors will take place on Thursday, September 27, at the WBC Annual Meeting and Fall Kickoff event at Columbia Country Club. The new Board of Directors term commences on October 1, 2012.

## OFFICER & DIRECTOR POSITIONS AVAILABLE

**CHAIRMAN-ELECT.....(1 year term) *One Position***

**VICE-CHAIRMAN .....(1 year term) *Three Positions***

**TREASURER.....(1 year term) *One Position***

**SECRETARY.....(1 year term) *One Position***

**DIRECTOR 2012-2015.....(3 year term) *Three Positions***

## WBC OFFICER & DIRECTOR NOMINATION FORM

There is no limit to the number of nominations a WBC member can submit. Please use a separate form for each nomination. Self-nominations are permitted. Please submit nominations by August 17, 2012.

Name of Nominee (please print): \_\_\_\_\_

Nominated Position: \_\_\_\_\_

Company: \_\_\_\_\_

Address: \_\_\_\_\_

City/State: \_\_\_\_\_ Zip: \_\_\_\_\_ Phone: \_\_\_\_\_

Fax: \_\_\_\_\_ Email: \_\_\_\_\_

~~~~~

Nominated By (please print): \_\_\_\_\_

Company: \_\_\_\_\_

Signature: \_\_\_\_\_ Date: \_\_\_\_\_

Phone: \_\_\_\_\_ Email: \_\_\_\_\_

**Please submit on or before August 17, 2012 to:** WBC Nominating Committee, Washington Building Congress, 1620 I Street, NW, Suite 810, Washington, DC 20006 or fax nominations to (202) 429-1922.



## Member Projects



Employees of A&A Transfer get ready to unload a Space Shuttle engine at the National Air and Space Museum after transferring it from the Udvar-Hazy Center in Chantilly, Va.

**The National Air and Space Museum (NASM)** is creating a major new exhibition gallery called *Moving Beyond Earth* which is about the history of human spaceflight since Apollo. The gallery covers the Space Shuttle program and the International Space Station as well as showing the efforts for future human space exploration. The Museum possesses a real, flown Space Shuttle Main Engine (SSME) at its Udvar-Hazy Center (UHC) in Chantilly, Va. and wishes to display it in the National Mall Building (NMB) *Moving Beyond Earth* exhibit downtown.

The engine is currently mounted on a stand (a.k.a. handler) and they will be moved together as a unit. At the National Mall Building, the engine was brought into the building through the first floor west end and moved to the gallery at the east end, utilizing the floor load considerations detailed in a recently commissioned structural load analysis. At the west end doors, the threshold is 2 inches high by 30 inches deep and will need to be taken into consideration for traversing either with wedges or ramps. The Contractor will move the SSME through the museum (three city blocks, approximately 1,000 feet) to the Moving Beyond Earth Gallery (113) at the first floor east end. Any equipment used inside the building should have non-marking tires

and be either electric or propane fueled. All equipment should be clean before coming into building. WBC member **A&A Transfer** was awarded this project provided all of the logistics/rigging support to complete the relocation of this artifact on May 7, 2012. Using a specially designed and tested, multi-axle "tug", A&A Transfer provided the solution to the Smithsonian meeting the floor load considerations and safely delivering the SSME to the exhibit hall.

WBC member **GPI/Greenman-Pederson, Inc.** completed the new **District Department of Human Services Headquarters and the Department of Mental Health (DHS/DMH) offices** are located at 64 New York Avenue, NW, Washington, D.C. The offices utilize 150,000 square feet on six floors. FORM Architects and GPI/Greenman-Pedersen, Inc., provided architectural and engineering design services for the project. The office includes general office space, conference rooms, break out rooms, and touchdown areas. Supplemental air was provided for the LL computer/printer room and the LL MDF Room. The Owner is pursuing LEED Silver (ID + C) 2009 LEED Certification.

Dirt is moving at the site of the **new 1700 New York Avenue, NW** office

building in Washington, D.C. WBC member **Balfour Beatty Construction** broke ground on the property last month. Balfour Beatty was selected by Carr Properties to provide both preconstruction and construction services for the new building, which is located less than two blocks from the White House and directly adjacent to the world-renowned Corcoran Gallery of Art.

A 122,000 square-foot, trophy-quality office with striking views of the White House and other Washington, D.C. landmarks, the new eight-story all-glass building will be constructed such that the top three levels will cantilever to the south over the Corcoran Gallery roof. With a goal of achieving LEED Gold certification, the building will incorporate regional and recycled materials, a green roof system to collect rainwater, energy-efficient MEP systems, daylighting, and views.

In addition to its Class A office space, the 1700 New York Avenue, NW, building will include rooftop congregating areas and a fitness center. The building's foundation will be spread footings with concrete foundation walls for the three below-grade levels and post-tensioned concrete slabs above-grade, as well as a 15-foot cantilever along the building's north and south sides. Completing in the summer of 2013, the new building's two levels of below-grade parking and one level of below-grade office space will require underpinning of the adjacent Corcoran Gallery building. The Balfour Beatty team is carefully planning selective demolition, utility relocations, and new construction activity to ensure minimal disruption to the Corcoran Gallery's operations.

**SIGAL Construction Corporation**, WBC member has been selected to convert the existing 10 story neo-classical **Kiplinger Editor's Building**, built in 1950, into a 116 room Hampton Inn hotel for Palmetto Hospitality of Washington D.C. II, LLC. Working within a tight 10 month schedule, the new Hampton Inn at 1729 H Street, Washington, DC, will receive new mechanical electrical and plumbing systems, a natural gas generator, two new elevators, replacement of windows, extension of



the mezzanine area, a new indoor pool and the build-out of new guest rooms and public areas. SIGAL is targeting a LEED® Silver certification, embracing Palmetto's commitment to sustainability. Delivery is set for early 2013.

**SIGAL Construction Corporation** has also been selected to construct the new **Hyattsville Area Elementary School** in Hyattsville, Md. for Prince Georges County Public Schools. The two-story, split-level elementary school of approximately 92,000 gross square feet will consist of a steel frame structure and masonry facade. New classrooms, an auditorium with an elevated stage, cafeteria, a music room, arts room, administrative offices and teachers lounge will be included. The project also includes sports fields and two play areas with poured rubber surfaces, wood seating and playground equipment for Grades 1-3 and 4-6. The roofing system will incorporate areas of membrane roofing and areas of vegetated roofing systems. The new Hyattsville Area Elementary School is being constructed adjacent to Nicholas Orem Middle School which will remain open during construction.

**SIGAL Construction Corporation** is expanding the first floor retail arcade space at **1101 15th Street, NW** for building owner TF Cornerstone. The storefront expansion will include new glass, a new canopy, stainless steel eyebrow and repair and recoating to the precast exterior providing the building with a new modern look and feel.

WBC member **Foulger-Pratt Development's** lease with Choice Hotels International has been selected by the Washington Business Journal as the 2011 Best Real Estate Deal in the Suburban Office Lease Category. The Choice Hotels lease was selected from an esteemed group of finalists including major government and private industry leases located in prime business centers around the Washington metro area.

The lease details include construction of the **Rockville Metro Plaza II Class A office building** with approximately 197,866 rentable square feet including 182,786 rentable square feet of office and 15,080 rentable square feet of street level

**WBC** **SUMMER NETWORKING**

**Cactus Cantina | Thurs., Aug. 16 | 5-7 PM**  
**3300 Wisconsin Ave., NW, Washington, DC**  
Great Tex-Mex food and a full hosted bar. One block north of National Cathedral, corner of Wisconsin Ave. and Macomb St.  
Register at [wbcnet.org](http://wbcnet.org)



## FOOD & FRIENDS®

**Third Saturday, Monthly**  
**10 a.m. — Noon**

**219 Riggs Rd., NE, Washington, D.C.**  
**[www.foodandfriends.org](http://www.foodandfriends.org)**

*Help prepare and package meals and groceries for delivery to more than 1,400 people living with HIV/AIDS, cancer and other life-challenging illnesses throughout the Washington area.*

*Must be at least 14 years old to volunteer.*

**For more information and to register: [www.wbcnet.org](http://www.wbcnet.org)**

### WBC COMMUNITY SERVICES VOLUNTEER OPPORTUNITY

retail. Choice selected the location to consolidate its employees in a location that offered accessibility to public transportation, a rich amenity base, and the opportunity to develop a hotel near its new headquarters. Choice's search was conducted with locations in five states including Washington, D.C.; Maryland, and Virginia, with

incentive packages negotiated with all five states. Choice signed a 10-year, 138,000 square-foot lease to relocate its world-wide corporate headquarters to Rockville Metro Plaza II, planned to be a LEED Platinum facility to be located within Rockville Town Center. Choice will occupy its new headquarters on June 1, 2013. **B**

# New Members

## New Members

### AHA Consulting Engineers

1050 17th Street, NW  
Suite 600  
Washington, D.C. 20036  
p. 202-776-7188  
www.aha-engineers.com  
Charlene\_gates@aha-engineers.com  
Representatives: **Charlene Gates**  
and **Chris Lay**

### ATC Associates, Inc.

9231 Rumsey Road  
Columbia, MD 21045-1924  
p. 410-381-0232  
f. 410-381-8908  
www.atcassociates.com  
Brendan.daley@atcassociates.com  
Representative: **Brendan Daley P.G.**

### Babst, Calland, Clements & Zomnir, P.C.

Two Gateway Center, 8th floor  
Pittsburgh, PA 15222-1425  
p. 412-394-6557  
f. 412-394-6576  
www.babstcalland.com  
rkalsen@babstcalland.com  
Representatives: **Richard Kalson**  
and **Lauren Rodriguez**

### Benfield Electric

400 Hickory Drive  
Suite 200  
Aberdeen, MD 21001-3641  
p. 410-879-1485  
f. 410-893-0882  
www.benfieldinc.com  
Representatives: **Jacqueline Beruete**  
and **Gregory Benfield**

### Gaithersburg Cabinetry & Millwork

4338 Aiken Drive  
Warrenton, VA 20187-3933  
p. 540-347-4551  
http://gcabinet.com  
restabrook@gcabinet.com  
Representative: **Randy Estabrook**

### Mcpherson Enterprises LLC

7600 Leesburg Pike  
Suite 120 East  
Falls Church, VA 22043  
p. 703-761-3913  
f. 703-827-2314  
www.mcphersonent.com  
doug@mcpersonent.com  
Representatives: **Douglas R. McPherson**  
and **Sterling D. Neblett, CFP**

### Studley Capital Projects Group

555 13th Street NW  
Suite 420 East  
Washington, D.C. 20004  
p. 202-628-6000  
f. 202-624-8555  
www.studley.com  
jbothwell@studley.com  
Representatives: **Jay J. Bothwell**  
and **Steve Tassi**

### Wells Fargo Advisors

1900 Duke St.  
Suite 100  
Alexandria, VA 22314  
p. 703-548-5700  
www.wfadvisors.com  
Philip.corso@wfadvisors.com  
Representative: **Philip Corso**

## New Small Business Members

### Burns Architectural Products

316 Longwood Road  
Kennett Square, PA 19348  
p. 610-444-4705  
f. 610-444-9845  
www.burnsarchitectural.com  
ned@burnsarchitectural.com  
Representative: **Ned Burns**

### Paul Greenberg, Arbitrator and Mediator

430 M. Street, SW  
Suite 701  
Washington, D.C. 20024  
p. 202-484-1156  
f. 202-484-9202  
www.greenbergadr.com  
pg@greenbergadr.com  
Representative: **Paul Greenberg**

### RMS

3280 Urbana Pike  
Suite 207B  
Ijamsville, MD 21754  
j.betz@reliablerms.com  
Representative: **Joe Betz**

### T&B Electric Co.

2134 Espey Ct.  
Suite 30  
Crofton, MD 21114-2437  
p. 301-261-3701  
f. 301-261-3608  
www.tandbelectricco.com  
rhardesty@tandbelectricco.com  
Representatives: **Robert Hardesty**  
and **Walter Jones**

## New Member Profiles

### AHA Consulting Engineers

AHA Consulting Engineers provides mechanical, electrical, plumbing, and fire protection design as well as LEED administration, commissioning and energy modeling serving clients in all vertical markets.

### ATC Associates, Inc.

ATC Associates, Inc. provides environmental and geotechnical engineering, construction materials testing, industrial hygiene and occupational health, building sciences, laboratory analytical services, and environmental health and safety training

### Babst, Calland, Clements & Zomnir, P.C.

Babst, Calland, Clements & Zomnir, P.C. is a corporate law firm that includes a construction services group that provides construction contract negotiation and construction litigation services to the construction industry throughout the United States.

### Benfield Electric

Benfield Electric has been family owned and operated since 1968. For over 40 years, Benfield Electric has serviced and maintained both a commercial and residential division. With 350 employees serving these divisions, Benfield also has an underground division and a team of engineers performing design/build projects.



### Gaithersburg Cabinetry & Millwork

Gaithersburg Cabinetry & Millwork is an AWI premium certified shop specializing in creating architectural millwork for contemporary and commercial environments including but not limited to institutions, museums, offices, restaurants, public and private spaces, and high-end residential. Our shop integrates solid wood and veneer components with stone, glass, metal, solid surface and fabrics per architectural designs. Our welding and light metal shop enables us to control many aspects of this integration and incorporate structural components in-house.

### McPherson Enterprises, LLC

Douglas R. McPherson is president of McPherson Enterprises LLC, which provides financial counsel exclusively to construction company owners. As a recognized estate and tax planning authority in the construction consulting field, he has spoken at local, regional, and national construction and surety conferences, as well as private corporate seminars.

### Studley Capital Projects Group

Studley Capital Projects Group, a business unit of Studley, Inc., offers development and project management services for projects ranging from interiors/tenant fit-out to complete build-to-suit ground up projects, to adaptive redevelopment, to client representation engagements for building projects. SCPG's combined experience of over 25 million square feet of commercial, residential, and institutional work in place belies its agile size and accessible experienced senior management.

### Wells Fargo Advisors

Wells Fargo Advisors is one of the nation's largest retail brokerages. The company provides advisory services, asset management, estate and retirement planning, brokerage, and portfolio monitoring services.

## New Small Business Profiles

### Burns Architectural Products

Burns Architectural Products is a family owned and operated manufacturers' representative business. It serves the Maryland, Washington, D.C. and Northern Virginia markets with high performance exterior components for commercial and institutional buildings.

### Paul Greenberg, Arbitrator and Mediator

Paul Greenberg, Esq., is an arbitrator and mediator based in Washington, D.C. Judge Greenberg has a long history with the Washington-area construction industry, having completed an apprenticeship with IBEW Local 26 and having worked several years as a business rep for the union. Between 1998 and 2002, he served as Chief Judge of the U.S. Department of Labor's Administrative Review Board. He also served on the D.C. Apprenticeship Council and the D.C. Office of Employee Appeals. He is a member of the National Academy of Arbitrators.

### RMS

RMS is a general contractor specializing in interior tenant fit-out and small ground up projects.

### T&B Electric Co.

T&B Electric Co., Inc. is a full service electrical contractor specializing in wireless telecommunications and solar energy.



WBC  
BASEBALL  
OUTING

NATIONALS

vs.

BRAVES

TUES. AUG 21

*Pre-Game Networking  
in Family Picnic Area*

5:30–7:05

Game

7:05–9:35

GET YOUR TICKETS NOW!



# WBC Calendar & Advertising Information

## Events Calendar

### July–November

**July 21**, 10 a.m.–12 p.m.  
WBC Community Service,  
Food & Friends, Washington, D.C.

**August 16**, 5–7 p.m.  
Summer Networking  
Cactus Cantina, Washington, DC

**August 18**, 10 a.m.–12 p.m.  
WBC Community Service,  
Food & Friends, Washington, D.C.

**August 21**, 5:30–9:35 p.m.  
Summer Networking  
Nationals vs. Braves Baseball Outing  
Nationals Stadium, Washington, D.C.

**September 15**, 10 a.m.–12 p.m.  
WBC Community Service,  
Food & Friends, Washington, D.C.

**September 27**, 5:30–8 p.m.  
75th Annual Fall Kickoff  
and Installation of Officers  
Columbia Country Club, Chevy Chase, Md.

**October 20**, 10 a.m.–12 p.m.  
WBC Community Service,  
Food & Friends, Washington, D.C.

**October 25**, 5:30–7:30 p.m.  
Fall Networking  
Biergarten Haus, Washington, D.C.

**November 17**, 10 a.m.–12 p.m.  
WBC Community Service,  
Food & Friends, Washington, D.C.

## 2012 Editorial Calendar

The **Bulletin** covers issues of importance to the building industry, news about WBC members and information about upcoming events. The topics listed below will be covered as feature articles in upcoming issues of the **Bulletin**. Persons interested in contributing information or advertising should contact WBC before the third week of the month preceding the issue. The **Bulletin** is published ten times a year by WBC. To place an ad, submit material or for more information call **(202) 292-5922**.

### October/ November 2011

New WBC Board and Chairman Profile

### December/January

Member Giving

### February/March

D.C. Sustainable Energy Utility

### April/May

Craftsmanship Awards

### June/July

Rebuilding Together

### August/September

Technology/Innovation

### October/November

Green Building/Sustainability

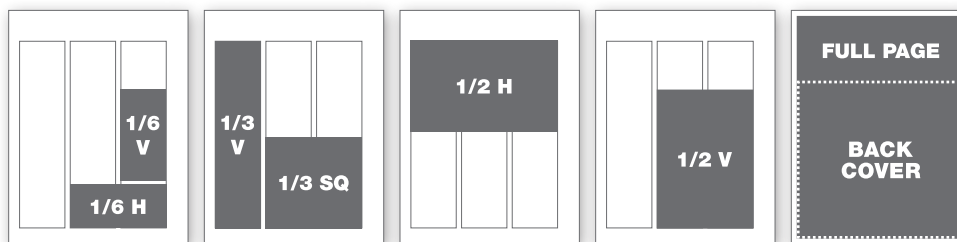
## Ad Rates

|                                | 1 time | 3 times | 6 times |
|--------------------------------|--------|---------|---------|
| <b>Member Rates:</b>           |        |         |         |
| <b>Black and White</b>         |        |         |         |
| 1/6 horizontal or 1/6 vertical | \$155  | \$130   | \$110   |
| 1/3 vertical or square         | \$230  | \$190   | \$150   |
| 1/2 horizontal or vertical     | \$430  | \$350   | \$290   |
| Full-page                      | \$630  | \$510   | \$410   |
| <b>Color</b>                   |        |         |         |
| Inside Front Cover             | \$730  | \$590   | \$480   |
| Inside Back Cover              | \$730  | \$590   | \$480   |
| Back Cover                     | \$830  | \$670   | \$540   |

|                                | 1 time  | 3 times | 6 times |
|--------------------------------|---------|---------|---------|
| <b>Non-member Rates:</b>       |         |         |         |
| <b>Black and White</b>         |         |         |         |
| 1/6 horizontal or 1/6 vertical | \$210   | \$176   | \$149   |
| 1/3 vertical or square         | \$311   | \$257   | \$203   |
| 1/2 horizontal or vertical     | \$581   | \$473   | \$392   |
| Full-page                      | \$851   | \$689   | \$554   |
| <b>Color</b>                   |         |         |         |
| Inside Front Cover             | \$986   | \$797   | \$648   |
| Inside Back Cover              | \$986   | \$797   | \$648   |
| Back Cover                     | \$1,121 | \$905   | \$729   |

Magazine trim size: 8.5" w x 11" h | Live area: 8.375" w x 10.875" h

## Ad Sizes



|                   |                                |
|-------------------|--------------------------------|
| 1/6 horizontal    | 4.43" w x 2" h                 |
| 1/6 vertical      | 2.1" w x 4.2" h                |
| 1/3 square        | 4.43" w x 4.2" h               |
| 1/3 vertical      | 2.1" w x 8.6" h                |
| 1/2 horizontal    | 6.75" w x 4.2" h               |
| 1/2 vertical      | 4.43" w x 6.38" h              |
| Back Cover        | 8.0" w x 7.5" h                |
| Full-page         | 8.25" w x 10.75" h             |
| Full-page + bleed | 8.5" w x 11" h<br>+1.25" bleed |



WBC NETWORKING

# Oktoberfest

AT

## Biergarten Haus

1355 H STREET, NE, WASHINGTON, DC

THURSDAY, OCTOBER 25, 5:30 – 7:30 PM

*Biergarten Haus — A Taste of Bavaria on Capitol Hill*

With its charming atmosphere, authentic food, live music, and, of course, genuine German beer on tap, Biergarten Haus is a slice of old-world Germany right on H Street NE. Enjoy a crisp Kolsch, a Cologne beer that dates back to the 1700s, or a rich Ayinger Celebrator Doppelbock from the heart of Bavaria. Pair either with the unforgettable taste of homemade Jager-Schnitzel and Kartoffelpuffer (potato pancakes) that will take you back to Oktoberfest all year long.

Please join us on for the Oktoberfest Networking party on October 19.

**PRIVATE PARTY DECK, GREAT GERMAN FOOD, BIER AND NETWORKING!**

Visit [www.wbcnet.org](http://www.wbcnet.org) for details