

Bulletin

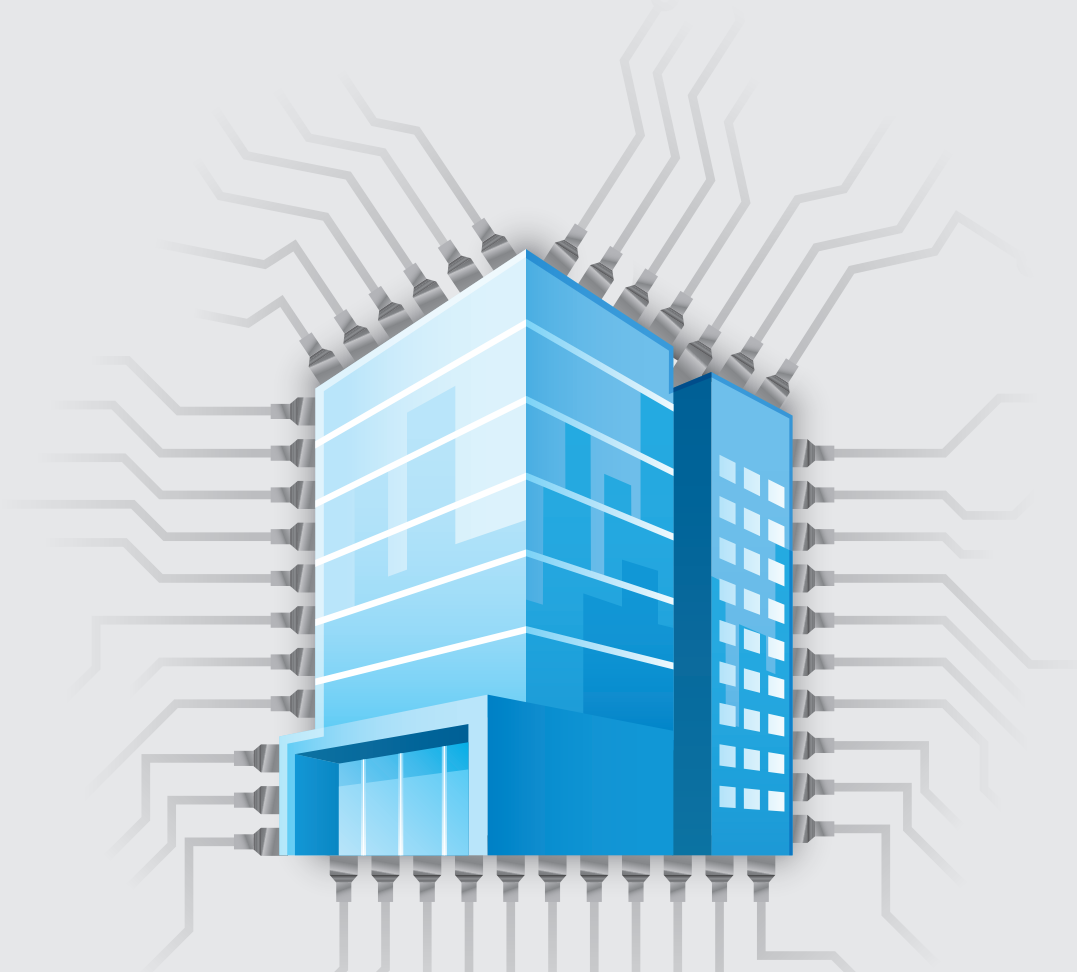
The Official Publication of the Washington Building Congress | **Oct./Nov 2011**

Inside ▶

Industry Report.....	2
New WBC Chairman Profile	7
Member Projects	8
New Members.....	11
WBC Calendar.....	16
Green Building Highlights.....	17



New WBC Chairman Paul Mella p.7



FIND THE **RIGHT** ELECTRICAL CONTRACTOR TO
ELECTRIFY
YOUR BUILDING PROJECT



For projects big and small, from maintenance to renovation to new construction, you'll find the right electrical contractor for your needs at our new website, ElectricalAlliance.org. Our experienced members—located throughout Maryland, Virginia and Washington, DC—deliver the cost-effective solutions you want.

www.ElectricalAlliance.org ▶

THE ELECTRICAL ALLIANCE

National Electrical Contractors Association and Local 26 IBEW

*200 Contractors and 8,000 Electricians **United for Quality.***

Follow the Electrical Alliance @DCElec_Alliance and www.facebook.com/electricalalliance

Bulletin

Oct./Nov. 2011

Washington Building Congress is a nonprofit association made up of professionals from a variety of disciplines, all with an active interest or involvement in the Washington Metropolitan Area's real estate, design, and construction community. The organization was established in 1937 to represent the collective interests of its members by providing education and networking opportunities and by promoting the advancement of the building industry. For additional information about membership, joining a committee or the WBC Bulletin, call (202) 293-5922 or visit us on the web at www.wbcnet.org.

CHAIRMAN OF THE BOARD

Paul Mella, Dynalectric Company

CHAIRMAN-ELECT

Jim Klein, The JBG Companies

VICE CHAIRMEN

John Barron, Foulger-Pratt Contracting

Tamara McNulty, Black & Veatch

Joel Zingesser, Grunley Construction Co., Inc.

TREASURER

Joe Schall, Pepco

SECRETARY

Carl Hirrlinger, James G. Davis Construction Corporation

IMMEDIATE PAST CHAIRMAN

Chuck Asmar, Asmar, Schor & McKenna, PLLC

DIRECTORS

Mike Baruccheri, Tishman Construction Corp.

Dan Buckley, Flippo Construction Co., Inc.

Lynne Coville, Boston Properties

Michael Leavitt, John Moriarty & Associates of Virginia, LLC

Nicolas Pasanella, Latitude 38 Real Estate LLC

Karen Roberts, Forrester Construction Company

Steve Smithgall, Balfour Beatty Construction

Anne Marie Tombros, Vango Construction Consulting

PRESIDENT & CEO

Steven J. Kenton, CAE

ASSOCIATE DIRECTOR

Rita F. Reis

EDITOR/DESIGNER

David Irish / Frank Sheehan, Frost Miller Group

Bulletin is published 10 times a year by Washington Building Congress, Inc. Individual subscriptions are available for \$139 per year. The articles in this publication are the opinions of the authors and do not necessarily represent or reflect the policies or opinions of Washington Building Congress. Copyright 2011. All rights reserved.

Washington Building Congress
1620 I St., NW, Ste. 810
Washington, DC 20006
T: (202) 293-5922 | F: (202) 429-1922
www.wbcnet.org



Chairman's Letter

Dear Members and Colleagues:



It was my distinct honor to take office as the 74th WBC Chairman of the Board on October 1. We started the new membership year with the always splendid Fall Kickoff Bull and Oyster Party enjoyed by over 300 members and guests at Columbia Country Club. The Hammerheads following up in October with the Oktoberfest Networking event open to the full membership and the Program and Education Committee is holding the New D.C. Department of General Services evening program featuring Allen Lew on November 9. We will once again top off a very busy 2011 with the WBC Holiday Party at Congressional Country Club on December 13.

Congratulations and welcome the new WBC Board of Directors installed at the Fall Kickoff in September. Chuck Asmar proudly passed the chairman's gavel to me at this memorable installation event. As Immediate Past Chairman, Chuck will also be serving as Chairman of the WBC Foundation. A very special thank you goes to Chuck for his years of invaluable leadership and service to the association. I would also like to extend thanks to departing Board members Jon Kurtis and Steve Richbourg. Following are the WBC officers and directors who joined me in serving our extraordinary organization on October 1:

WBC FY 2012 Board of Directors

- | | | | |
|---|--|--|--|
| <ul style="list-style-type: none">• Paul Mella, <i>Chairman of the Board</i> (Dynalectric Company)• Jim Klein, <i>Chairman-Elect</i> (The JBG Companies)• John Barron, <i>Vice Chairman</i> (Foulger-Pratt Contracting)• Tamara McNulty, <i>Vice Chairman</i> (Black & Veatch) | <ul style="list-style-type: none">• Joe Schall, <i>Treasurer</i> (Pepco)• Carl Hirrlinger, <i>Secretary</i> (James G. Davis Construction Corp.)• Chuck Asmar, <i>Immediate Past Chairman of the Board</i> (Asmar, Schor & McKenna)• Mike Baruccheri, <i>Director</i> (Tishman Construction)• Dan Buckley, <i>Director</i> (Flippo Construction Company) | <ul style="list-style-type: none">• Lynne Coville, <i>Director</i> (Boston Properties)• Mike Leavitt, <i>Director</i> (John Moriarty & Associates)• Nicolas Pasanella, <i>Director</i> (Latitude 38 Real Estate)• Karen Roberts, <i>Director</i> (Forrester Construction Co.)• Allen Slaughter, <i>Director</i> (Dynalectric Company) | <ul style="list-style-type: none">• Steve Smithgall, <i>Director</i> (Balfour Beatty Construction)• Anne Marie Tombros, <i>Director</i> (Vango Construction Consulting) |
|---|--|--|--|

Planning for the 56th annual WBC Craftsmanship Awards program, "Celebrating Quality Craftsmanship", is now underway. The deadline for submission of entries for the 2012 awards program is November 10, 2011. On January 12, teams of industry judges will evaluate all entries based upon recognized criteria associated with quality craftsmanship. The 2012 Craftsmanship Awards program will culminate on Friday, March 23, with the wonderful awards banquet recognizing over 400 individual craftsmen. If you would like to submit an entry, serve as a judge, be a sponsor, or access further information regarding Craftsmanship Awards, please visit the WBC website at wbcnet.org.

I would also like to take this opportunity to ask that you please renew your WBC membership if you have not already done so. We need to continue moving forward as a unified group in order to effectively advance the interests of our industry. The membership year runs from October 1 to September 30, and annual renewal payments must be received no later than December 30 to be included in the 2012 *WBC Industry Index* membership directory. There are also many great advertising opportunities still available for the new directory. If you have questions regarding membership renewal, sponsorship or advertising, please contact Rita Reis at (202) 293-5922.

The WBC Holiday Party is right around the corner! This spectacular industry event is being held once again at the stunning Congressional Country Club on Tuesday, December 13. Please plan on attending what is generally recognized as the premiere industry Holiday Party enjoyed by over 550 industry representatives.

I look forward to seeing you at an upcoming WBC program or event. Thank you for your support.

Best regards,

Paul Mella
WBC Chairman of the Board

2011-2012 Corporate Sponsor



Industry Report

GPI / Greenman-Pedersen, Inc. Announces New Hire



Ryan Meitzler

WBC member GPI / Greenman-Pedersen is pleased to announce the addition of **Ryan Meitzler**. Meitzler is a mechanical engineer with experience in HVAC design,

construction, and project management. He has worked on projects for the British Embassy, the National Air and Space Museum, and the United Nations Environment Programme. Meitzler has served annually as a guest lecturer for the course, "Contemporary Issues: MEP Issues," at George Washington University. He received his bachelor's degree in mechanical engineering from Penn State.

Asmar, Schor and McKenna Adds Construction Litigation Attorneys to Firm

WBC member **Asmar, Schor and McKenna** is pleased to announce the addition of **Michael C. Crowley**, **Michael K. Koger**, and **John A. Nader** as construction litigation attorneys to its firm.

Michael Crowley's work primarily involves contract development and negotiation, as well as construction and government contract litigation. He also provides counsel on lien rights, bond claims, and contract performance issues including design defects, labor impacts, and delay. Prior to practicing law, Crowley owned and operated his own construction business, which has provided him a hands-on experience in the construction field that he applies to his cases. He received a Bachelor of Arts degree from Fort Lewis College and his Juris Doctor from the University of Baltimore School of Law, where he served as team captain for the Jessup International Law Moot Court Team. He is admitted to practice in the District of Columbia, Maryland, Virginia, the U.S. District

Court for Maryland, the U.S. District Court for the District of Columbia, and the U.S. Bankruptcy Court for the Eastern District of Virginia. He is currently a candidate for a LEED Green Associate designation.

Michael Koger primarily focuses on construction law, design professional errors and omissions, and property law. Prior to joining ASM, he worked as both an architect and urban planner in San Diego, Ca., where he gained valuable experience designing biomedical facilities, research and development facilities, office buildings, and residences. He received Bachelor of Architecture and Bachelor of Science in environmental design degrees from Ball State University and graduated *cum laude* from Tulane University Law School, where he also earned a certificate in environmental law. While attending law school, Koger worked at the Tulane Environmental Law Clinic, where he was a lead contributor on an energy regulation matter that was argued in front of the Louisiana Public Service Commission. He is admitted to practice in the District of Columbia, California, the U.S. District Court for the Southern District of California, and the District of Columbia Court of Appeals.

John Nader's practice focuses on construction contract disputes and litigation, having successfully represented contractors, owners, suppliers, and design professionals on such construction-related issues and projects as delay claims, mechanic's liens, condominiums, large retail and industrial complexes, and overseas government facilities. In addition, Nader has co-authored several articles on delay damages, bond claims, contract damages, and independent contractor liability. He received a Bachelor of Arts degree from the University of Virginia and his Juris Doctor from The Catholic University of America, Columbus School of Law. He is admitted to practice in the District of Columbia, Maryland, Virginia, and the U.S. District Courts for the Eastern District of Virginia, the Western District of Virginia, and the District of Maryland.

The Barbour Group Hires Beth A. Woodring as Chief Underwriting Officer

The Barbour Group announces the recent hire of **Beth A. Woodring** to fill the position of chief underwriting officer, an executive position at the WBC member agency. Woodring brings a diverse background to The Barbour Group, which includes business consulting experience, strong analytical and collaboration skills, as well as tenured experience with bank financing, process improvement, and process engineering.

In her role as Chief Underwriting Officer, Woodring will primarily be responsible for producing profitable contract and commercial surety bond business and provide The Barbour Group with additional strength in:

- Providing commercial and contract surety bonds expertise and ability to navigate proposals for surety bond programs
- Working with underwriter(s) for approval on bonds, from simple and to highly complex bonding projects
- Meeting with and guiding clients to strengthen business retention, build and maintain business relationships and develop new opportunities in support of growth objectives and
- Continuing to build the agency's relationships, and interpret and explain the products and services that are available to our client base

Prior to joining The Barbour Group, Woodring's experience has included senior leadership roles with the State of Maryland's Department of Business and Economic Development (DBED), working with clients specifically in the area of loan guaranty and bond financial incentive packages ranging in size from \$500,000 to \$5 million for municipalities and small to Fortune 100 commercial clients. A former commercial lender with Mellon Bank, Woodring also served as a commercial credit officer for Equitable Bank and managed the Loan Review function at Bank of Maryland. Her bank experience includes middle market lending, private banking, loan administration, loan documentation and credit analysis.

Woodring received a Master's degree in business administration from The Johns Hopkins University and a Bachelor's degree in economics and Spanish from Bucknell University, and was named a 2011 inductee in the Maryland SBDC Million Dollar Club with \$1.9 million in client financings. As a client counselor with the SBDC, she achieved certification as a High Impact Client Counselor in the three-county Northern Region, winning acclaim for her efforts in programs she initiated such as The Launch Box™ and Business Development Network leveraging access to world-class coaches for growing businesses.

The Barbour Group Earns Position on the Inc 500/5000 List

The Barbour Group is proud to announce its inclusion in the 2011 Inc. 500/5000 30th annual list of the nation's fastest-growing private companies. The list represents the most comprehensive look at the most important segment of the economy—America's independent-minded entrepreneurs. With a consistent three-year 45 percent growth rate, The Barbour Group secured the 39th spot in industry ranking and ranked 66 in the Baltimore region.

Founded in 2002, as an independent insurance agency focused on construction bonding and commercial insurance, The Barbour Group, is known for its passionate approach to helping small businesses find bonding solutions. Led by Karen Barbour, who also recently received the SmartCEO Magazine's 2011 Brava Award, which recognizes top female business leaders and recently received an extension on her appointment on Maryland Governor O'Malley's Commission on Small Business, The Barbour Group, has achieved success in providing surety bonding for the construction industry in more than 30 states and 4 international countries, while also impacting public policy to continue to advocate on the behalf of small businesses.

The 30th Annual Inc. 500 / 5000 Conference and Awards Ceremony took

place September 22-24, 2011 at the Gaylord National Resort and Convention Center in Washington, DC.

Dixon Hughes Goodman Names Tysons Corner & Rockville Managing Partner

Dixon Hughes Goodman LLP has named **Greta E. Tosi-Miller**, CPA, as office managing partner of the WBC member firm's Tysons Corner office and **Lisa J. Cines**, CPA, as office managing partner of the firm's Rockville, Md. office.



Greta Tosi-Miller

with a Bachelor of Science in business administration, Tosi-Miller has more than 34 years of accounting experience (30 in the DC metro area) having spent the early years of her career in the tax practice of a national public accounting firm and several large local firms. She later became managing partner of Crutchley, Marginot & Tosi, until that firm merged with Goodman & Company in June 2004.

She is a frequent speaker at real estate, business and association meetings and conventions, lecturing on such topics as financial, tax, retirement and estate planning issues. She has also authored tax and business planning articles for several national magazines, and has been awarded the honor of "Super CPA" from her professional colleagues (as determined by Virginia Business Magazine) for the past several years. Most recently, she was named Smart CPA in the DC metro area.

Tosi-Miller is a member of the American Institute of Certified Public Accountants, the Virginia Society of Certified Public Accountants (VSCPA), and the Management of Accounting Practice Committee

Tosi-Miller has served as managing partner of the Rockville, Md. location since November 2009, and has been with the firm since 2004. A graduate of Ohio State University

for the Northern Virginia VSCPA. She also serves as a counselor for the National Women's Business Center, a facilitator for the Fairfax County Nurturing Parenting Program and a Mission Team Co-Leader for Honduras Outreach, Inc.



Lisa Cines

A seasoned industry veteran in the Washington, DC metro area, Cines has spent nearly 30 years with Aronson, LLC, serving as a former partner, managing officer and partner-in-charge of business and corporate development. Under her leadership, that firm was named to INSIDE Public Accounting's Top 25 "Best of the Best" list for eight years.

A graduate of the University of Maryland with a Bachelor's degree in accounting, Cines also served as an officer in Aronson & Company's Government & Technology Services Group where she specialized in accounting, tax and consulting services with a special emphasis on implementing high-level business plans and strategies.

She is a frequent speaker at accounting industry events, and in 2005 was named one of the Washington Business Journal's "25 Women Who Mean Business." She served as a member of the Board of Directors of the American Institute of Certified Public Accountants (AICPA) from 2006–2009 and currently sits on the Board of Examiners. Cines is also active in community organizations such as the Board of Directors of Junior Achievement, the Advisory Board for the University of Maryland Accounting Department, the Boards of Rockville Economic Development, Inc., and The Montgomery Chamber of Commerce Foundation.

In her new role, Cines will concentrate on building out some of DHG's core industries in the metro DC market, with an emphasis on corporate development, mentoring and cultivating individual talent within the firm.

Industry Report

BE&K Building Group is now KBR Building Group

WBC member **BE&K Building Group**, a KBR Company, is **KBR Building Group**, as of October 1, 2011. KBR Building Group is a diversified construction services company serving commercial, healthcare, institutional and industrial clients. In 2011, the Washington Business Journal named KBR Building Group the No. 1 Overall Best Places to Work (category, Large Business/Non-local headquarters). KBR Building Group's local office is located in Vienna, Va.

KBR Building Group has a rich heritage. The merger of its former parent, BE&K, Inc., with KBR in 2008 further enriched the company's financial and personnel resources, and expanded its geographic coverage. KBR is a leading U.S. based engineering, construction services company with revenues of nearly \$11 billion per year. KBR Building Group is the exclusive commercial construction arm of KBR's business. KBR is ranked the 4th largest contractor on the Top Contractors List issued by *Engineering News-Record*. KBR Building Group's 650 people companywide were collectively responsible for more than \$2.0 billion of projects last year.

GPI / Greenman-Pedersen, Inc. Supports Charities

WBC member **GPI** recently participated in CANstruction 2011 held at the National Building Museum in Washington, DC. Nineteen firms from the A/E/C industry came together for the build-out. Wanting to build a structure that was original and dealt with current issues, GPI built an airport body scanner. GPI employees raised \$1,800 through a poker tournament, a car wash, and an ice cream social to purchase the 1,496 cans which were ultimately donated to the Capital Area Food Bank. GPI was awarded the "People's Choice Award" at the De-CANstruction Ceremony.

GPI has been supporting Miriam's Kitchen since 2006. GPI employees assisted Miriam's Kitchen in serving breakfast to over 200 homeless in



GPI employees assembled their installation into an airport body scanner at this year's CANstruction.

Washington, DC on September 29th. Volunteers helped with preparing and serving breakfast as well as setting up the dining hall and welcoming everyone at the door as they arrived.

Once again, the GPI Plane Yankers pulled through for the Special Olympics at the Annual Dulles Day Plane Pull. Raising over \$3,000 this year brings GPI's five year contribution total to over \$19,000. This year the Plane Yankers pulled a 164,000 pound aircraft 12 feet in 13.167 seconds.

Bond Joins HKS as Federal Healthcare Strategy Leader and Senior Vice President



Rick Bond

Rick Bond joins WBC member **HKS** as federal healthcare strategy leader and senior vice president. He works with federal clients to deliver healthcare facility solutions in the taxpayers' best interest.

His distinguished 30-year career in the Army Medical Service Corps included planning, programming, fund-

ing and design services, as well as on-site construction management, for billions of worldwide medical care and research facilities for the Army Surgeon General and the Military Health System. He understands the qualities of leadership, technical excellence and teamwork required to deliver mission-critical project solutions within an increasingly complex federal resourcing environment.

Bond joins HKS as a key part of our strategic plan to continue an extensive history of architectural service to public healthcare institutions at the federal, state and local levels.

While studying architecture at Princeton, Bond took the school motto of "In the Nation's Service" to task. Having grown up in a military family, he attended on an ROTC scholarship, which led to him earning a Bachelor of Arts in architecture. He graduated from the University of Michigan with a Master of Architecture and a Master of Science in engineering and construction management. He rounded out his education with a Master's degree in business administration from The Wharton School at the University of Pennsylvania.

His assignments in federal service led to the growth of the Department of Defense's (DoD) medical construc-

tion program to unprecedented levels, the adoption of acquisition techniques that were new to the DoD, the establishment of the National Inter-Agency Biodefense Medical Research Campus and the successful completion of BRAC medical construction in the National Capital Area.

Retiring as a Colonel, his final position on active duty was as the Commander of the U.S. Army Health Facility Planning Agency, overseeing all major Army medical investments around the world. During his command, he oversaw the planning, programming and strategic messaging of most of the medical treatment facility construction that the U.S. Army is executing today in support of BRAC decisions including the growth and global re-stationing of Army forces and for re-invigorated investment levels to reverse historical erosion of funding levels. In addition, he provided planning, funding and design oversight for construction of the new U.S. Army Medical Research Institute of Infectious Diseases in Fort Detrick, Md.; the U.S. Army Medical Research Institute of Chemical Defense in Aberdeen Proving Grounds, Md.; and construction oversight of the Walter Reed Army Institute of Research in Forest Glen Annex, Md.

Most recently, he served as deputy director for facilities at the Joint Task Force Capital Medicine, providing oversight and guidance for over \$2 billion in critical DoD investments at the Walter Reed National Military Medical Center and at Fort Belvoir, Va.

Lebkisher Joins WDG Architecture



Jon Lebkisher

Jon Lebkisher, AIA, LEED AP, has joined Washington, DC-based WBC member WDG Architecture as director of low & mid-rise multifamily. Lebkisher is an award-winning

architect who has designed many distinctive multifamily residential projects throughout the U.S.

THE PRACTICE OF SOLUTIONS

When all you have is a hammer, every problem looks like a nail. That's the trouble with many law firms — a one-size-fits-all approach that doesn't take the client's business into account. But at **Asmar, Schor & McKenna**, we're "big toolbox" people, specialists in smart ideas and effective solutions from project development through delivery.

Visit us at www.asm-law.com to learn more about our attorneys and qualifications, our decades of industry experience, and our services in all areas of construction law, government contracts, commercial real estate transactions and commercial leasing.



ASMAR | SCHOR
MCKENNA

202-244-4264
www.asm-law.com



5335 Wisconsin Avenue, NW | Suite 400
Washington, D.C. 20015



Dynalectric

An EMCOR Company

**Diversified Electrical Construction
and Service Installations
for Business and the Community**

Dynalectric Company

22930 Shaw Road, Suite 100
Dulles, Virginia 20166

703/742-3500



Laurel Office

8101 Sandy Spring Road, Suite 260
Laurel, Maryland 20707

703/733-4168



Visit our website:
www.dynalectric-dc.com

- ◆ Commercial & Government Facilities
- ◆ Industrial & Institutional Projects
- ◆ BioMed & Lab Installations
- ◆ Data/Communication Centers
- ◆ Service Contracts
- ◆ Fire Alarm Testing & Retrofit
- ◆ 24-Hour Emergency Service
- ◆ Residential, Multi-Unit
- ◆ Design Assist/Design Build
- ◆ Traffic Signal Installation

Industry Report

Lebkisher's experience includes the design and management of urban infill, transit-oriented, mixed-use, multifamily, healthcare, and university projects, with an emphasis on residential buildings. His portfolio, which extends from Vermont to Florida and from Atlanta to San Francisco, includes the design of nearly 2,000 residential units and extensive retail/residential space. His recent projects include Marquis Vista, a 225-unit apartment community with high-end amenities; and Lindbergh Vista, a mixed-use community with 314 residential units, shops, and restaurants. Both five-story apartment communities are located in Atlanta, Ga.

Lebkisher's work has been recognized with numerous awards, including a national award for smart growth from the U.S. Environmental Protection Agency and a Livable Communities Award from the AARP and the National Association of Home Builders (NAHB). His clients include Vista Realty, Trammell Crow Residential, Newport Development, Hallkeen, and Fairfield Development. Lebkisher has also worked with such clients as HCA (Hospital Corporation of

America) and Kaiser Permanente, as well as the University of California, Berkeley.

Lebkisher holds a Bachelor of Architecture degree from the University of Cincinnati. He is a registered architect and a LEED-accredited professional. Lebkisher is a member of the American Institute of Architects.

Orr Boys and Girls Club Receives Facility Upgrades during Forrester Construction's Community Involvement Day

On October 22, 2011, WBC member **Forrester Construction** sponsored an annual Community Involvement Day in which all Forrester team members and friends and family were invited to participate at the Orr local Boys and Girls Club in Washington, DC. Forrester rallied the support of its subcontractors and suppliers to donate supplies and labor. Together, the subcontractors and Forrester Team Members team made upgrades to their facility including the painting of exterior

playground space, repairing handrails and fencing; replacement of interior and exterior lights and bulbs, replacement of ceiling tile in various locations; painting of select interior spaces and building of shelving and storage units.

Forrester's partnership with the Boys & Girls Club allows Forrester to help renovate various Boys and Girls Club facilities around the Washington DC area. Forrester currently has a total of five ongoing projects in this Ward and has adopted the Orr Club to add to its efforts to give back to that community, part of its corporate commitment to serving the local community.

Lanfranchi to Head Up HITT Contracting's Hospitality Sector



Peter Lanfranchi

HITT Contracting Inc., WBC member, is pleased to announce that **Peter Lanfranchi**, senior vice president, will be leading HITT's national hospitality sector, which will focus on a broad

range of industry projects including renovation, repositioning, and new construction of brand and boutique hotels. Lanfranchi will provide leadership, strategy and direction to a team of 14 talented construction professionals, who have worked together for HITT during the past decade on a variety of award-winning projects for Hilton, Marriott, Hyatt, Four Seasons, W Hotels, and several notable boutique properties.

With his team at HITT Contracting, Lanfranchi has delivered more than 4,000 hotel rooms and completed numerous hotel fit-outs of public spaces, ballrooms, restaurants, conference centers, spas, and fitness centers. Recent projects include a rooftop addition and new kitchen at the historic landmark Hay-Adams Hotel, a multimillion-dollar redevelopment of the Hotel Washington into the W Hotel, a boutique hotel overlooking the Washington Monument in our nation's capital, and a phased renovation of the McLean Hilton ballrooms and other public spaces. **B**

The SK&A Group

Smislova, Kehnemui & Associates, P.A.
Potomac, MD (301) 881-1441

SK&A Structural Engineers, PLLC
Washington, DC (202) 659-2520

Eastern Testing & Inspection Corp. (ETI)
Potomac, MD (301) 881-8313

www.skaengineers.com

Consistently providing superior structural engineering and inspection services to our clients.

J.E. RICHARDS

10401 Tucker Street
Beltsville, MD 20705
Phone: (301) 345-1300
Fax: (301) 345-2370

INCORPORATED

ELECTRICAL CONTRACTORS

SERVING MD, VA & DC

New Washington Building Congress Chairman Leads by Involvement

74th Chairman Plans to Increase Member Engagement

The 2011-2012 Washington Building Congress (WBC) Chairman Paul Mella, senior vice president of Dynalectric, is no stranger to involvement.

Ever since WBC's 74th Chairman graduated from the Washington, DC Joint Apprenticeship and Training Committee (JATC) program, Mella has been actively engaged in his company, industry, community and family.

He first worked as a journeyman at Gleason Electric Company while instructing first year basic electric wiring apprenticeship courses for the JATC. Three years later, Mella was hired by Dulles, VA-based Dynalectric Company as a general foreman and then recruited to work in Dynalectric's office. Mella has been with Dynalectric for 32 years and has held positions of junior estimator, project manager, senior project manager, assistant construction manager for commercial division, vice president of operations and construction and senior vice president of operations, a position he has held since 2007.

Mella became a Washington Building Congress member 18 years ago, thanks to Dynalectric colleague Brian Burns, who encouraged his involvement, and has held seven leadership positions including chairman. Throughout his membership, Mella served as craftsmanship committee assistant chair and chair, secretary, treasurer, board of directors, board of directors/chairman elect and the board of governors, which he still participates today.

"You cannot build a reputation on what you are going to do," is Mella's famous motto, which he is applying to his chairman work by focusing on two areas, website engagement and small business involvement.

Mella is pushing the development of a new website and training videos to boost member usage. The committee will create several training videos such as navigating the site and how to set-up and implement social media including Facebook and Twitter. Mella believes this understanding initiative will draw more website traffic and aid in the positive development of members companies.

Increasing small business WBC involvement is Mella's second goal. "Because we live in a federal government dominated market where public and federal work are required, it is the responsibility of large companies to involve and mentor small businesses with their projects," said Mella.



Paul Mella at the Fall Kickoff

"The Building Congress is mainly a large company association and there are specific regulations for large and small companies the other is not aware of. Fostering relationship between companies will educate both sides and increase the value of our organizations membership."

Mella is married with one daughter, who plays volleyball for a NCAA sweet sixteen team at Randolph Macon College in Ashland, Va. Her passion and Mella and his wife's strong beliefs in giving back to the community, led them to provide space for more than 125 young girls to learn volleyball skills the past three years. Mella also helps underprivileged children by donating holiday gifts. In his spare time, Mella can be found in his garage restoring classic cars because "it is a great way for me to put my mind in neutral and still be productive," and has finished four to date.

"I have great pursuits that will enhance the significance of our organization and our industry in a multitude of ways," said Mella. "I firmly believe active involvement is key in moving our organization forward and I am anticipating a successful year." 

Member Projects



Foulger-Pratt breaks ground on Citron.

The U.S. Army Corps of Engineers-Baltimore District has awarded **Grunley/Goel Joint Venture, LLC**, a joint venture between Grunley Construction Co., Inc. and Goel Services, Inc., a \$7.5 million contract to expand **Fort Detrick's Education Center** by 18,000 square feet and construct a new 10,000 square-foot community auditorium within Building 1520. Two buildings will also be demolished, and site restoration performed. The project will seek LEED certification.

The education center will receive a new building entrance with aluminum curtain wall system, a vegetated membrane roof, and a new second floor with associated elevator and staircase. New space will be created for classrooms, offices, and conference rooms and a connector link will join the center to the adjacent existing library. The auditorium will seat 350 patrons, and include theater lighting and new audio-visual and communication systems. New energy-efficient mechanical, plumbing, electrical systems will be installed throughout. The project is scheduled to get underway in October and wrap-up by July 2013. This is the second project the joint venture has undertaken on the Fort Detrick campus.

Foulger-Pratt Companies broke ground on the final phase of **Down-**

town Silver Spring. The low-rise amenity-rich community, to be named the Citron, will house 222 rental homes, including 31 affordable units. The contemporary interiors feature custom European-style cabinetry, dramatic 9-to-10 foot ceilings, granite countertops, and gourmet kitchen with islands. Residents will enjoy a resort-style pool and sundeck, a chic clubroom, health club, cyber café, and outdoor fire pit. Foulger-Pratt is the developer, general contractor, and property manager of the Citron. The community brings Foulger-Pratt's recently formed multi-family management division up to 2,700 units under residential management. Citron will begin pre-leasing in the fall of 2012.

Clark Construction Group, LLC, has delivered \$4 billion and approximately \$10 million square feet of projects to the federal government that meet or exceed schedule, cost, and quality expectations. These six projects, recommended by the **Defense Base Realignment and Closure (BRAC) Commission**, had a mandatory completion deadline of September 15, 2011. Clark, working collaboratively with the government and various project partners, took an integrated "one team" approach to design and construction, driving all projects toward their successful completion. These projects will assist

the Department of Defense (DoD) in its mission to operate more efficiently and promote joint operations among all branches of the military. Their construction demonstrated the breadth and strength of Clark's capabilities and provided opportunity for dozens of small, veteran-owned, and service-disabled veteran-owned businesses.

The consolidated East Coast headquarters of the National Geospatial-Intelligence Agency, **NGA Campus East** is the largest project delivered by the **U.S. Army Corps of Engineers (USACE)** since the Pentagon in 1943. Working in a joint venture with **Balfour-Beatty Construction**, Clark built a 2.2 million square-foot main office building to accommodate 8,500 workers (as well as 25 percent population/mission growth), a technology center that includes a Tier III Enterprise data center, a 105,000 square-foot central utility plant, a 5,100-space parking garage, and a 7,300 square-foot visitor control center. Also included in the \$1.46 billion of construction work were extensive infrastructure improvements including nine lane-miles of roadway, several bridges, and miles of utilities. This large and complex project was completed for USACE under the Integrated Design-Bid-Build (IDBB) delivery method, which allowed for early contractor involvement during the preconstruction phase. Clark and its project partners reached substantial completion on NGA Campus East six months ahead of schedule on April 19. The largest federal project registered with the U.S. Green Building Council, NGA Campus East was awarded LEED Gold certification in August. The project architect is a joint venture of **RTKL**, Baltimore, Md.

Clark completed the 1.75 million square-foot **BRAC 133 DoD Administrative Office** complex five weeks ahead of schedule. The 16-acre campus at Duke Realty's Mark Center development includes a 15-story and 17-story office tower, two parking garages, remote inspection facility, visitor control center, and a public transportation center. The office complex houses 6,400 employees in 24 DoD agencies. **HKS, Inc.**, Washington, D.C.,

Member Projects

and **Wisniewski Blair & Associates, Ltd.**, Alexandria, Va., are the architects on this design-build project. The DoD/BRAC 133 project was built to achieve LEED Gold certification.

The **San Antonio Military Medical Center (SAMMC)** is comprised of a new, 765,000 square-foot medical tower, 362,000 square feet of renovated space at Brooke Army Medical Center, a 1.7 million square-foot, 5,000-space parking structure, and a central energy plant. SAMMC includes 425 inpatient beds (including 116 intensive care unit beds), 32 operating rooms, medical, pediatric, and surgical specialty clinics, bone marrow and organ transplant unit, cardiovascular, maternal-child, and battlefield health and trauma centers of excellence, and the U.S. Army Institute of Surgical Research Burn Center. **RTKL** of Dallas is the project's lead architect.

The Walter Reed National Military Medical Center is one of the military's flagship healthcare facilities. To accommodate the relocation of Walter Reed Army Medical Center to Maryland, the **Clark/Balfour Beatty** design-build team added 725,000 square feet of new construction and performed more than 450,000 square feet of renovations to the National Naval Medical Center (NNMC) campus. As an integral part of the design-build team, **HKS Inc.**, Washington, DC, led the design efforts.

New construction includes the 560,000 square-foot **America Building**, the military health system's largest ambulatory building; the **Arrowhead Building**, a 165,000 square-foot inpatient addition to NNMC's existing hospital; traffic improvements, including two secure gate entrances; and two parking structures adding 2,150 parking spaces. Also included in the \$850 million scope of work were extensive renovations to NNMC's existing facilities. In all, Clark and its project partners renovated 46 different medical departments, creating unique logistics plans, ICRAs, and interim life safety system plans for each. All renovation work occurred above, below, or immediately adjacent to ongoing hospital functions with no impact on medical operations. Walter Reed's new construc-

tion components received LEED Gold certification from the U.S. Green Building Council and the project was named the USGBC-National Capital Region's Project of the Year this summer.

The Joint Regional Correctional Facility Southwest (Miramar Brig) project is a new 99,000 square-foot addition to the Naval Consolidated Brig Miramar's existing confinement complex at MCAS Miramar. The Navy Personnel Command's military confinement facility for the entire southwest region, the Miramar Brig project added 200 cells, a new prisoner processing center, entrance lobby, visitor's center, health services unit, state-of-the-art kitchen, large mess hall, staff support space, classrooms, and conference rooms. Miramar Brig is the only facility within the DoD to house female service members,

Delivered under a design-build contract, the project was completed ahead of schedule in just 16 months. Clark broke ground on the project only six weeks after the kickoff meeting. Using precast concrete cells expedited the project schedule by at least two months. Two-cell modules were prefabricated in Arizona, complete with a bunk, toilet, and sink, and brought to the site for just-in-time placement. This 170,000

square-foot building provides the Air National Guard (ANG) with a centralized command that was designed and built to maximize efficiency, accommodate growth, and promote interaction among employees. The four-story glass- and steel-clad structure meets anti-terrorism/force protection standards and includes office space for 600 military and civilian workers, conference spaces, a fitness center, and a food services area. A two-story glass walkway connects the new building with an existing ANG facility next door. Completed on schedule despite a three-month stop-work order to accommodate a redesign, this project was built to LEED Silver certification standards and features an automated sunshade system to maximize natural light and an under-floor air distribution system. The project's base architect is **AECOM**, Arlington, Va.

Suffolk Construction recently joined military and local dignitaries to celebrate the ribbon cutting of the **BRAC 132 U.S. Army Legal Services Agency (USALSA) Administrative Building**, a multi-story, 97,300 square-foot Command Headquarters Building located in Fort Belvoir, Va. Partnering with architect **Perkins+Will**; mechanical subcontractor **Southland Industries**;



Suffolk Construction celebrates ribbon-cutting for BRAC 132 USALSA Army administrative facility.

Member Projects



and electrical subcontractor **M.C. Dean**, Suffolk constructed the project on an accelerated schedule of just ten months, in time to meet the BRAC deadline.

The BRAC 132 project is unique because it was designed and constructed using a design-build project delivery method, which is a departure from the traditional design/bid/build delivery process that would have required 24 months to complete this project. As part of the design-build process, all project stakeholders were involved in the planning from project conception through completion, including **The U.S. Army Corps of Engineers**. The design-build team also incorporated many creative ideas into the design and construction of the facility, including the pre-fabrication of mechanical systems and panelization of the exterior wall to streamline and integrate the design and construction activities. The team also incorporated lean construction practices and leveraged Building Information Modeling to minimize client risk and ensure the project was delivered on budget and on schedule.

The new facility also includes an emergency operations center; administrative space; state-of-the-art training center; an appellate courtroom and adjoining spaces; and secure conference rooms. The project also includes a 348-space multi-level parking structure.

The project was designed and constructed to achieve LEED Gold Certification, but the design-build team also followed sustainability guidelines throughout the administration of the project, including enhancing commissioning, storing and collecting recyclables, specifying pre- and post-consumer materials, using local/regional materials, using low-emitting materials, and controlling lighting systems. The team also installed low mercury lighting, administered green cleaning practices during construction, achieved 40 percent water savings, and diverted over 95 percent of project waste.

On October 4, the Board of Education of Washington County Public Schools approved the award of **Bester Elementary School** to the **Lend Lease** Washington office. Construction of the



**Third Saturday,
Monthly**
10 a.m. — Noon

219 Riggs Rd., NE,
Washington, D.C.
www.foodandfriends.org

Help prepare and package meals and groceries for delivery to more than 1,400 people living with HIV/AIDS, cancer and other life-challenging illnesses throughout the Washington area.

For more information and to register: www.wbcnet.org

**WBC COMMUNITY SERVICES
VOLUNTEER OPPORTUNITY**

new 72,000 square-foot replacement school located in Hagerstown, Md., is scheduled to begin in July 2012. The existing Bester Elementary School, built in 1930, will remain operational until completion of its replacement school, after which it will be demolished to provide room for new ball fields and playgrounds.

Shapiro and Duncan, executed their new office expansion to assist their growing team with being more productive and efficient when working together and to allow more of their employees to work from the same location. The new 1,700 square-foot space includes six new project manager offices, six new assistant manager work areas, and an additional conference room. The new space has also been designed to allow the team to utilize their ASI controls and provide the human resources department with their own work area. This newly expanded facility will also allow Shapiro & Duncan to increase their estimating efforts and the number of projects they bid on each week, while continuing to be the long-lasting leading mechanical solutions provider in the DC metro area. **B**

Company

Clune Construction

1521 Westbranch Drive, Suite 500
McLean, VA 22102
p. (703) 962-1814
f. (703) 962-1570
www.clunegc.com
alevatino@clunegc.com
Representatives: **Tony Giachinta
and Michael Mackey**

Fox Rothschild LLP

1030 15th Street, NW, Suite 380 East
Washington, DC 20005
p. (202) 461-3100
f. (202) 461-3102
www.foxrothschild.com
cgriffin@foxrothschild.com
Representatives: **Dirk Haire
and Reggie Jones**

JBG Rosenfeld Retail

4445 Willard Avenue, Suite 700
Chevy Chase, MD 20815-4645
p. (301) 657-0700
f. (301) 657-9850
www.jbgr.com
Representatives: **Brett Snyder
and Chris Gliński**

Schaer Bader, Inc.

660 S. Figueroa Street, Suite 900
Los Angeles, CA 90017-3453
p. (213) 408-4518
f. (213) 408-4665
www.schaerbader.com
Representative: **David Bader**

Small Business

Delmarva Trailer Sales & Rentals, Inc

7431 Washington Blvd
Elkridge, MD 21075
p. (301) 621-2015
f. (301) 621-2017
www.delmarvatrailers.com
generalmailbox@delmarvatrailers.com
Representative: **Terry Sherman**

Nationwide Electrical Construction Services, Inc.

2625 Everts Street, Unit B
Washington, DC 20018
p. (202) 636-3800
f. (202) 636-1058
www.N-E-S.net
vherbert@n-e-s.net
Representatives: **R. Vaughn Herbert
and John Young**

Relocated Members

Boston Properties

2200 Pennsylvania Avenue, Suite 200 W
Washington, DC 20037
p. (202) 585-0800
f. (202) 585-0888
www.bostonproperties.com

Company Profiles

Clune Construction

Clune Construction provides construction management and general contracting services associated with interior tenant development, restoration and renovation; offices in Chicago, Washington, DC and Los Angeles.

JBG Rosenfeld Retail

JBG Rosenfeld Retail is focused on retail real estate and mixed-use development opportunities in the mid-Atlantic region, one of the strongest real estate markets nationwide. Together with our partner, the JBG Companies, we translate decades of local real estate expertise into an inherent ability to anticipate, influence, and adapt to market trends in all aspects of our business. From property acquisitions, to renovation, to expansion and development, to leasing, every deal we execute has the fundamental advantage of our extensive experience and personalized approach, which enhance the results we produce for our stakeholders.

Schaer Bader, Inc.

Schaer Bader is a firm of leading industry experts dedicated to supporting owners, lenders, investors, sureties, contractors and legal counsel on all construction related matters. From concept to closeout, we work on our client's behalf to minimize risk, mitigate disputes and maximize value.

Additional Representatives

Asmar, Schor & McKenna, PLLC

5335 Wisconsin Avenue, NW, Suite 400
Washington, DC 20015-2077
p. (202) 244-4264
f. (202) 686-3567
www.asm-law.com
Susan L. Schor
sschor@asm-law.com
David Edelstein
dedelstein@asm-law.com
Michael Crowley
mcrowley@asm-law.com
Michael Koger
mkoger@asm-law.com
John Nader
jnader@asm-law.com

BRETCO

6231 Executive Blvd
Rockville, MD 20852-3906
p. (301) 770-1180
f. (301) 231-0785
www.bretco.com
Erik Kleiner
ekleiner@bretco.com

Bricklayers & Allied Craftworkers Local #1 MD, VA & DC

5879 Allentown Road
Camp Springs, MD 20746-4570
p. (240) 695-9463
f. (240) 695-9467
www.baclocal1.org
Matt Redabaugh
mredabaugh@baclocal1.org
Scott Garvin
sgarvin@baclocal1.org

Chiaromonte Construction Company

605 Raleigh Place, SE
Washington, DC 20032-4221
p. (202) 562-0027
f. (202) 370-6480
www.cc-builder.com
Justin Thornton
jthornton@cc-builder.com
Shawn Gageby
sgageby@cc-builder.com

Commercial Hardware of MD, Inc.

611 Hammonds Ferry Road, Suite P
Linthicum, MD 21090-1322
p. (410) 636-0111
f. (410) 636-3334
www.commercialhardware.com
Scott Hicks
shicks@commercialhardware.com

New Members

Donohoe Construction Company

2101 Wisconsin Avenue, NW
Washington, DC 20007-2294
p. (202) 333-0880
f. (202) 342-3924
www.donohoeconstruction.com

Susan Goldstein

susang@donohoe.com

Dynalectric Company

22930 Shaw Road, Suite 100
Dulles, VA 20166-9448
p. (703) 742-3500
f. (703) 742-8473

www.dynalectric-dc.com

Amos Derflinger

aderflinger@dynalectric-dc.com

Francis Szczesiak

Szczesiak@dynalectric-dc.com

Jeff Lampe

jlampe@dynalectric-dc.com

Glenn Essex

gessex@dynalectric-dc.com

Doug Meador

dmeador@dynalectric-dc.com

Flippo Construction Co., Inc.

3820 Penn Belt Place
Forrestville, MD 20747-4748
p. (301) 967-6800
f. (301) 736-2138

www.flippo.com

Roger Shunnarah

rshunnarah@flippo.com

Will Sigafoose

Wsigafoose@flippo.com

John Morgan

jmorgan@flippo.com

Foulger-Pratt Contracting, Inc.

9600 Blackwell Road, Suite 200
Rockville, MD 20850-3659

p. (240) 499-9600

f. (301) 738-7806

www.foulgerpratt.com

Elizabeth Fragale

efragale@foulgerpratt.com

Dennis Delisle

ddelisle@foulgerpratt.com

Harvey-Clearly Builders

207A Perry Parkway, Suite 1
Gaithersburg, MD 20877-2196
p. (301) 519-2288

f. (301) 519-9677

www.harvey-clearly.com

Kevin Rogge

krogge@harveyclearly.com

HESS Construction + Engineering Services

804 West Diamond Avenue, Suite 300
Gaithersburg, MD 20878-1414

p. (301) 670-9000

f. (301) 670-9009

www.hessconstruction.com

Joyce Donahue

jdonahue@hessedu.com

Hugh McCoy

ISEC, Inc.

9305 Gerwig Lane, Suite M
Columbia, MD 21046-2904

p. (410) 381-6049

f. (410) 381-6812

www.isecinc.com

Joni Anderson

jranderson@isecinc.com

Jones Lang LaSalle

1801 K Street, NW, Suite 1000
Washington, DC 20006-1303

p. (202) 719-5000

f. (202) 719-5001

www.jll.com

Stephen Owens

Stephen.owens@am.jll.com

Laura Hoye

Laura.hoye@am.jll.com

Joanna Verdi

Joanna.verdi@am.jll.com

Lend Lease

One Preserve Parkway, Suite 700
Rockville, MD 20852-4272

p. (301) 354-3100

f. (301) 354-3151

www.lendlease.com

Jett Henderson

Jeffrey.henderson@lendlease.com

Jim Deitrick

Jim.deitrick@lendlease.com

Engineering Services

Mechanical Engineering	Structural Engineering
Electrical Engineering	Civil Engineering
Plumbing Design	Facilities Documentation
Fire Protection Design	Asset Management

Among the top 100 National Design Firms
by Engineering News Record since 2000

Among Washington Business Journal's
top 25 Engineering Companies for 2010

We are grateful to our clients for their continued support

GPI

Greenman-Pedersen, Inc.
Engineering and Construction Services

7650 Standish Place Suite 109 Rockville, MD 20855	T 240.268.1820 F 240.268.1821 E lbrode@gpinet.com www.gpinet.com
---	---

New Members

Lessard Design Inc.

1881 Campus Commons Drive, Suite 105
Reston, VA 20191-1520
p. (703) 596-4486
f. (703) 596-0147
www.lessarddesign.com
Christian J. Lessard
clessard@lessarddesign.com
Steve Gang
sgang@lessarddesign.com

M&T Insurance Agency, Inc.

5530 Wisconsin Avenue, Suite 620
Chevy Chase, MD 20815
p. (301) 654-3600
f. (301) 986-0832
www.mtb.com/mtinvestmentgroup/
corporate-institutional/Pages/hess-egan.aspx
John Lawson
jlawson@mandtinsurance.com
Eric Goodwin
jegoodwin@mtb.com
Scott Guthrie
sguthrie@mtb.com

Natelco Corporation

140 Westhampton Avenue
Capitol Heights, MD 20743-3516
p. (301) 350-1325
f. (301) 350-8175
www.natelcoelectric.com
Gary Cooke, Jr.
g.cooke@natelcoelectric.com
Dan Rucci
drucci@natelcoelectric.com

P.J. Dick Incorporated

6994 Columbia Gateway Drive, Suite 100
Columbia, MD 21046-3178
p. (443) 539-2800
f. (443) 539-2820
www.pjdick.com
Janice Ososky
Janice.ososky@pjdick.com

Rippeteau Architects, P.C.

1530 14th Street, NW, 2nd Floor
Washington, DC 20005-3781
p. (202) 387-7123
f. (202) 387-7129
www.riparchs.com
Kerry Putnam
kerry@riparchs.com

Rutherford

5500 Cherokee Avenue, Suite 300
Alexandria, VA 22312-2321
p. (703) 354-1616
f. (703) 354-2731
www.rutherford.com
Marie Subacz
Marie.subacz@rutherford.com
Frank Roddey
Frank.roddey@rutherford.com

Southland Industries

22340 Dresden Street, Suite 177
Dulles, VA 20166-9336
p. (703) 834-5570
f. (703) 834-5572
www.southlandind.com
Mike Miller
mmiller@southlandind.com

The
WBC
BULL & OYSTER
PARTY

FALL KICK OFF & INSTALLATION OF OFFICERS

Thanks again to our Sponsors!

Boston Properties | CENTRIA Architectural Services | Chiamonte
Construction Company | Clune Construction | Exponent
Foulger-Pratt Contracting | Grunley Construction Company
The JBG Companies | Milestone Construction Services
PEPCO | Rosedin Electric

WBC Board of Directors 2011-2012



CHAIRMAN
Paul Mella
Dynaletric Company



CHAIRMAN-ELECT
Jim Klein
The JBG Companies



VICE CHAIRMAN
John Barron
Foulger-Pratt Contracting



VICE CHAIRMAN
Tamara McNulty
Black & Veatch



VICE CHAIRMAN
Joel Zingesser
Grumley Construction Co., Inc.



TREASURER
Joe Schall
PEPCO



TREASURER
Carl Hirrlinger
*James G. Davis
Construction Corporation*



IMMEDIATE PAST
CHAIRMAN
Chuck Asmar
Asmar, Schor & McKenna, PLLC



DIRECTOR
Mike Baruccheri
Tishman Construction Corp.



DIRECTOR
Dan Buckley
Flippo Construction Co., Inc.



DIRECTOR
Lynne Coville
Boston Properties



DIRECTOR
Michael Leavitt
John Moriarty & Associates



DIRECTOR
Nicolas Pasanella
Latitude 38 Real Estate LLC



DIRECTOR
Karen Roberts
*Forrester Construction
Company*



DIRECTOR
Allen Slaughter
Dynaletric Company



DIRECTOR
Steve Smithgall
Balfour Beatty Construction



DIRECTOR
Anne Marie Tombros
Vango Construction Consulting



WBC Calendar & Advertising Information

Events Calendar

November / December

- **November 15**, 3:30–4:30 p.m.
Regional Development Committee Meeting, WBC Offices
- **November 16**, 11:30 a.m.–12:45 p.m.
Community Services Committee Meeting, WBC Offices
- **November 19**, 10:00 a.m.–12:00 p.m.
WBC Community Service, Food & Friends, Washington, D.C.

- **November 19**, 6:30 p.m.–12:00 a.m.
2011 Builders' Ball, National Building Museum, Washington, D.C.
- **December 6**, 9:00–10:30 a.m.
Estimating 101 Seminar, WBC Offices
- **December 12**, 11:30 a.m.–12:45 p.m.
Hammerheads Committee Meeting, WBC Offices
- **December 13**, 6:00–8:30 p.m.
WBC Holiday Party, Congressional Country Club, Potomac, Md.

- **December 17**, 10:00 a.m.–12:00 p.m.
WBC Community Service, Food & Friends, Washington, D.C.
- **December 21**, 4:00–6:00 p.m.
Board of Directors Meeting, WBC Offices
- **December 20**, 3:30–4:30 p.m.
Regional Development Committee Meeting, WBC Offices
- **December 21**, 11:30 a.m.–12:45 p.m.
Community Services Committee Meeting, WBC Offices

2012 Editorial Calendar

The **Bulletin** covers issues of importance to the building industry, news about WBC members and information about upcoming events. The topics listed below will be covered as feature articles in upcoming issues of the **Bulletin**. Persons interested in contributing information or advertising should contact WBC before the third week of the month preceding the issue. The **Bulletin** is published ten times a year by WBC. To place an ad, submit material or for more information call **(202) 292-5922**.

October/ November 2011

New WBC Board and Chairman Profile

December/January

Member Giving and Builders' Ball

February/March

District Government, DGS

April/May

Craftsmanship Awards

June/July

Technology/Innovation

August/September

Rebuilding Together

October/November

Green Building/Sustainability

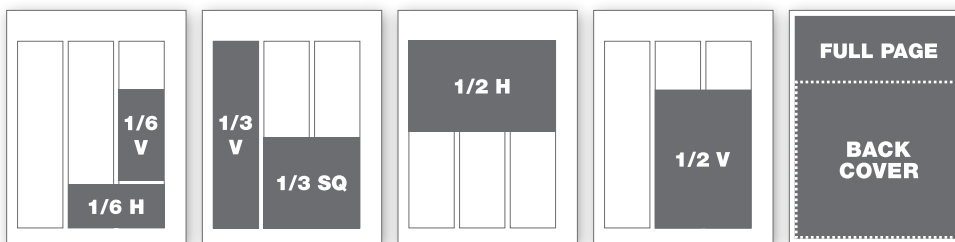
Ad Rates

	1 time	5 times	10 times
Member Rates:			
Black and White			
1/6 horizontal or 1/6 vertical	\$155	\$130	\$110
1/3 vertical or square	\$230	\$190	\$150
1/2 horizontal or vertical	\$430	\$350	\$290
Full-page	\$630	\$510	\$410
Color			
Inside Front Cover	\$730	\$590	\$480
Inside Back Cover	\$730	\$590	\$480
Back Cover	\$830	\$670	\$540

	1 time	5 times	10 times
Non-member Rates:			
Black and White			
1/6 horizontal or 1/6 vertical	\$210	\$176	\$149
1/3 vertical or square	\$311	\$257	\$203
1/2 horizontal or vertical	\$581	\$473	\$392
Full-page	\$851	\$689	\$554
Color			
Inside Front Cover	\$986	\$797	\$648
Inside Back Cover	\$986	\$797	\$648
Back Cover	\$1,121	\$905	\$729

Magazine trim size: 8.5"w x 11"h | Live area: 8.375"w x 10.875"h

Ad Sizes



1/6 horizontal	4.43" w x 2" h
1/6 vertical	2.1" w x 4.2" h
1/3 square	4.43" w x 4.2" h
1/3 vertical	2.1" w x 8.6" h
1/2 horizontal	6.75" w x 4.2" h
1/2 vertical	4.43" w x 6.38" h
Back Cover	8.0" w x 7.5" h
Full-page	8.25" w x 10.75" h
Full-page + bleed	8.5" w x 11" h +1.25" bleed

Project Highlight

WBC Members Clark Construction Group, LLC and Boston Properties were awarded LEED Gold Level Certification for the recently completed office building at 2200 Pennsylvania Avenue. The 440,000 square foot office building is part of a mixed use project that includes a 1000-space below grade garage, a 335-unit residential complex and 70,000 square feet of retail (including notable “green” retailers such as Whole Foods and sweetgreen). The office and residential towers surround a central 26,000 square foot landscaped courtyard with fountain, which covers a completely below-grade loading dock of the same size, ensuring that all streets and sidewalks surrounding the block are free of building service functions.

In addition to the extensive courtyard, the project also includes green roofs on both towers, extensive landscaping on the residential pool deck and multiple rows of street trees where the buildings have been set back from the property line to create an urban plaza. The courtyard landscaping is irrigated with condensate water from the cooling towers collected in a cistern inside the garage. The building achieved over 35% savings in energy performance and over 40% savings in water efficiency. Despite the large floor plates, the internal courtyard helped the project avoid “dead” spaces and allowed the curved glass walls to provide daylight and views to over 90% of the interior spaces.

Excavation for the project began in 2008 with the office building delivering in early 2011 and all project phases completing this past summer. The design team for the project includes Pelli Clarke Pelli Architects, Hickok Cole Architects, Thornton Tomasetti structural engineers and TOLK, Inc. Clark Concrete and Miller & Long both provided concrete work on the site. Mechanical subcontracting was by JCM Associates, Inc. and the electrical subcontractor was Dynalectric.

Sustainability Doesn't Stop with Substantial Completion

With temperatures in the DC region topping 100-degrees in July and the local

power grid taxed in order to meet the demand of cooling the region's buildings, we're reminded that sustainability doesn't end with getting your Certification Plaque from USGBC. In fact, with USGBC putting more emphasis on measurements of actual building performance and with the District laws now requiring energy reporting for public and private owners, keeping your building energy efficient is becoming more important than ever. As a building's energy performance becomes quantified (and public), the better performing buildings are likely to become more attractive as lower energy costs flow directly to tenants.

So what are local landlords doing to make their properties more competitive? One prominent local landlord noted that while only a few years ago it was primarily the owners who were behind the drive towards sustainable development, now a good number of tenants are approaching them with ideas to save energy and money. “The discussion has changed from, ‘this is what you need to do as a tenant in our building’ to a more collaborative, organic dialogue where tenants are initiating the conversation and we explore the feasibility of these ideas together.” The landlord has engaged tenant representatives in many of their buildings through lunch meetings, interviews and surveys in order to craft a better environmental experience, which may not always align with the original plans of the design architects and engineers.

Ideas that have come from these dialogues range from significant (and sometimes costly) renovations to simple, no cost changes that encourage everyone to save energy. Some of the most basic ideas include:

- Changing light switches to motion sensors in file rooms and other areas that are not regularly occupied.
- Identify offices with space heaters and rebalance air as feasible to shift cooling away from those who do not want it.
- Identify offices with incandescent table or desk lamps and encourage those tenants to switch to compact fluorescent bulbs.
- Notify tenants via email on energy code red days and remind them to turn off unnecessary lights and computers.
- Reduce HVAC hours on Saturdays from the



2200 Pennsylvania Avenue,
Washington, D.C.

8 hours that are provided in the lease to the actual hours that people are working in the building, with additional hours provided as needed.

- Change out specialty lamps, like MR-16's, to LED substitutes.
- Provide battery recycling programs for tenants.
- Install readers in stairwells and refresh finishes (including signage that tells tenants how many calories are burned per flight of stairs) to encourage use of stairs over elevators. This led not only to reduced elevator calls, but also to healthier tenants.
- Hold recycling competitions amongst tenants.

Not every idea has to be groundbreaking to save energy. Through simple measures like the ones above, tenants and landlords throughout the region are working together, making steady improvements in building performance—improvements that add up to significant savings. **B**

To have your firm's Green Building achievements highlighted on this page, please contact Winona Leaman at wleaman@gpinet.com. Your topic suggestions and comments are also appreciated.

WBC
 HOLIDAY
PARTY

DECEMBER 13, 2011 6–8:30 PM

CONGRESSIONAL COUNTRY CLUB
8500 RIVER RD. POTOMAC, MARYLAND

BUSINESS ATTIRE PLEASE—JACKET REQUIRED BY CLUB

COME JOIN YOUR FRIENDS AND COLLEAGUES FOR SOME HOLIDAY CHEER!

VISIT WWW.WBCNET.ORG FOR DETAILS