

# Bulletin

The Official Publication of the Washington Building Congress | July/Aug. 2011

## Inside ▶

Industry Report.....	2
Rebuilding Together .....	9
Member Projects .....	15
Green Building Highlights.....	21
WBC Calendar .....	26



# THE INDUSTRY HAS ITS UPS AND DOWNS.

---

WE JUST MAKE SURE WE KNOW THE INS AND OUTS.

— *Managing your Workers' Compensation claims is our passion.* —



*Insurance Services, Inc.*

703-359-5910

[www.preferins.com](http://www.preferins.com)

Workers' Compensation, Commercial Automobile, Property,  
General Liability, Umbrella, Group Benefits and Bonding.  
Risk managers for more than 250 contractors.





# Bulletin

July/August 2011

Washington Building Congress is a nonprofit association made up of professionals from a variety of disciplines, all with an active interest or involvement in the Washington Metropolitan Area's real estate, design, and construction community. The organization was established in 1937 to represent the collective interests of its members by providing education and networking opportunities and by promoting the advancement of the building industry. For additional information about membership, joining a committee or the WBC Bulletin, call (202) 293-5922 or visit us on the web at [www.wbcnet.org](http://www.wbcnet.org).

**CHAIRMAN OF THE BOARD**

**Chuck Asmar**, Asmar, Schor & McKenna, PLLC

**CHAIRMAN-ELECT**

**Paul Mella**, Dynalectric Company

**VICE CHAIRMEN**

**Jim Klein**, The JBG Companies

**Steve Richbourg**, HITT Contracting Inc.

**Joel Zingesser**, Grunley Construction Co., Inc.

**TREASURER**

**Tamara McNulty**, Black & Veatch

**SECRETARY**

**John Barron**, Foulger-Pratt Contracting

**PAST CHAIRMAN**

**Jonathan Kurtis**, Boston Properties

**DIRECTORS**

**Mike Baruccheri**, Tishman Construction Corp.

**Dan Buckley**, Flippo Construction Co., Inc.

**Lynne Coville**, Boston Properties

**Carl Hirrlinger**, James G. Davis Construction Corporation

**Michael Leavitt**, John Moriarty & Associates of Virginia, LLC

**Nicolas Pasanella**, Latitude 38 Real Estate LLC

**Karen Roberts**, Forrester Construction Company

**Joe Schall**, Pepco

**Steve Smithgall**, Balfour Beatty Construction

**PRESIDENT & CEO**

**Steven J. Kenton**, CAE

**ASSOCIATE DIRECTOR**

**Rita F. Reis**

**EDITOR/DESIGNER**

**David Irish / Frank Sheehan**, Frost Miller Group

*Bulletin is published 10 times a year by Washington Building Congress, Inc. Individual subscriptions are available for \$139 per year. The articles in this publication are the opinions of the authors and do not necessarily represent or reflect the policies or opinions of Washington Building Congress. Copyright 2011. All rights reserved.*



**Washington Building Congress**

1620 I St., NW, Ste. 810

Washington, DC 20006

T: (202) 293-5922 | F: (202) 429-1922

[www.wbcnet.org](http://www.wbcnet.org)

## Chairman's Letter

### Dear Members and Colleagues:



It is hard to believe that I am in the last two months of my term as Chairman of the Board—time has flown by. It has been a tremendous honor and experience working with such a great Board of Directors on behalf of such a great organization. The WBC has had an amazing year and I am convinced that the key to this year's success is very simple--active and collaborative committee membership participation. The collaborative effort is especially prevalent in the ongoing and massive effort of developing our new web page, which has now well surpassed the "wireframe and mood board stage", and is entering the actual content loading stage. We look forward to its expected launch by the Fall Kickoff. Many thanks to the long hours and multi-tasking efforts of Katie Garrett (David M. Schwarz Architects) and Louise Boulton-Lear (James G. Davis Construction Corporation) who continue to manage all delivery milestones with great efficiency, effectiveness, and, most importantly, PRIDE. Kudos to you both as well as Board oversight and committee "gate-keeper", Carl Hirrlinger (James G. Davis Construction Corporation).

The Washington Building Congress has an exciting series of late summer and fall events. On August 23 we will be hosting our Summer Networking event at Cactus Cantina in Cathedral Heights where the margaritas, beer and great tasting Tex-Mex snacks will be aplenty. Many thanks to the Hammerheads Committee, Chair Mike Baruccheri (Tishman Construction Corporation) and Vice-Chair Nina Manguiri (Crossection, Inc.) for putting together so many outstanding events this year. These events remain a big part of WBC's networking pulse so mark your calendars and come join us!

The Fall Kickoff and Bull and Oyster Roast will be held on Tuesday, September 27 at Columbia Country Club and is bound to be a big time. In anticipation for the kickoff of WBC's FY '12, the Nominating Committee needs your recommendations for Board of Directors by no later than Friday, August 19. An official notice will be sent out at the end of August announcing the slate of candidates, which will undoubtedly be another great lineup for the New Year. As always, the election of the new Board of Directors will take place at the WBC Annual Meeting and Fall Kickoff event. Special thanks to Nominating Committee Chair and Past Chairman of the Board Jonathan Kurtis. Please mark your calendars now for the Fall Kickoff Bull & Oyster Party—you just can't miss this one.

Oh yes, and who could forget the return of the great Builders' Ball? Bar none, it is the most powerful charitable event in our industry. The 2011 BB will be supporting the following charities: 1. Community Residences (CR), Inc. of Chantilly, VA 2. Georgia Avenue/ Rock Creek East Family Support Collaborative-Washington, DC 3. Phoenix Houses of the Mid-Atlantic- Arlington, VA and 4. Washington Architectural Foundation - Washington, D.C. It will be held on Saturday, November 19th at the National Building Museum. Our 2011 Builders Ball Chairman, Darrel Rippeteau, AIA (Rippeteau Architects) is working feverishly in coordinating this huge endeavor, which reaches out to our entire construction, design and real estate community. Please review the 2011 Builder's Ball Sponsors List included in this edition of the *Bulletin* and get on board for this very worthy cause. By sponsoring now you receive multiple advertising benefits including monthly listings in the *Washington Business Journal* and mentions in all of the 20 participating association publications. For more information contact Fundraising Chair, Nan Hartman at [nan@thehartmangroup.net](mailto:nan@thehartmangroup.net).

In this *Bulletin* issue, we remember our WBC Community Service 2011 Rebuilding Together Workday and the many dedicated individuals and firms who helped make this commendable initiative successful--most notably, Community Services Committee Chair Tim Bakos (Perkins+Will), Vice-Chair and House Captain Jeff Davidson (PSI), and Board liaison Mike Leavitt (John Moriarty and Associates of Virginia). Also, take a moment to review the 74<sup>th</sup> annual WBC Golf Outing section recognizing our outstanding sponsors and tournament winners. Over 350 industry supporters came out for an exceptional day (75 degrees in the sun—we know how to pick'm) and a great reception at The Golf Club at Lansdowne. Props to the Golf Outing Committee, Co-Chairs Steve Skinner (Suffolk Construction) and Mike Sloan (BE&K Building Group) whose dedication, time and effort truly paid off.

Incredibly, we are also approaching the time of year when industry members are asked to pledge an ongoing commitment to the association by renewing WBC memberships. I encourage all of you to consider becoming more actively involved with committee participation, networking, and volunteering your time to serve our exceptional association as the rewards of doing so are simply tremendous. Continued participation in the WBC is especially important

*Continued on p. 11*

# Industry Report

## Thomas Bond and Steve Skinner Join Suffolk Construction Company



Thomas Bond

**Thomas Bond, RA, AIA, LEED AP,** has joined **Suffolk Construction Company** as vice president, National Federal Government. A senior construction professional with

over 26 years of experience, Bond brings comprehensive experience in both architecture and construction operations and executive oversight.

Bond is responsible for both business development and execution of Suffolk's work in the Federal sector on a national basis. Over the course of his career, Bond has managed large-scale construction projects for some of the nation's largest general contractors. In addition, Bond spent 15 years of his career working for the Naval Facilities Engineering Command (NAVFAC) as an architect in charge of design and construction and worked on many associated projects including the \$200 million NAVFAC Headquarters at the Washington Navy Yard. Most recently, Bond served as senior preconstruction and design phase manager at Mortenson Construction and preconstruction manager at Barton Malow where he was responsible for the design, budget and schedule for large scale projects ranging from \$40 million to over \$300 million.

Bond received his Bachelor of Science in architecture from the University of Maryland, College Park and an Architectural Masters from Virginia Polytechnic Institute and State University.



Stephen Skinner

**Steve Skinner** has joined Suffolk Construction Company as senior vice president. A seasoned construction professional with over 30 years of experience, Skinner brings to the

position demonstrated leadership

capabilities and extensive experience in the DC metropolitan region.

As part of Suffolk's regional management committee, Skinner will be responsible for setting the strategic direction for Suffolk's pursuits and the execution of work primarily in the commercial sector. Over the course of his career, Skinner has completed several large-scale local projects which have resulted in a balanced portfolio of both private and public sector work including healthcare, residential, commercial office, life sciences, hospitality, retail, renovations and mixed-use construction. Most recently, Skinner served in executive positions at DPR Construction, Inc. and BE&K Building Group. Prior to that, he spent 20 years at Bovis Lend Lease where he rose to the level of executive vice president of the Washington DC metro region

Over the course of his career, Skinner has held leadership positions for several business and community associations including serving as chairman of ABC-VA's General Contractors Council, Chairman of the National Capital Golf Classic, and chairman of the local Kids Under Construction Board. Skinner has a Bachelor of Science in building construction from Purdue University and continues to be an active member of ABC, ULI, and WBC.

## ECS Mid-Atlantic, LLC Hires Two



Drew Thomas

**R. Drew Thomas, CPG,** has joined **ECS Mid-Atlantic, LLC (ECS)** as a senior engineering geologist. With more than 18 years of experience in geotechnical, environmental, engineering

geology and groundwater resource investigations, Thomas is a certified Professional Geologist in the Commonwealth of Virginia and holds a Bachelor of Science degree in geology from Radford University. He was previously a founding principal of a geotechnical consulting firm he led for more than 12

years. Beyond his traditional geotechnical expertise, Thomas has a wealth of experience in the planning and execution of geophysical testing and the interpretation of geophysical data, using geophysical methods to detect subsurface karst features, determine depth to bedrock, and locate water bearing fracture zones. Thomas also has significant experience with geologic issues such as rock excavation methods, blasting monitoring and reuse of shot rock materials. Another area in which Thomas excels is geotechnical dam site evaluation, dam design and dam remediation. He has worked with clients in the industrial, commercial and transportation sectors, as well as with local municipalities, state and federal government entities and agencies.

Based in the Chantilly, Va. headquarters, Thomas has joined ECS's Loudoun County Team, which is responsible for many large, ongoing projects in the county. He looks forward to continuing his work with the Loudoun County Facilities Standards Manual Public Review Committee, which he's been involved with during the past 18 months.



J. Randy Wirt

**J. Randy Wirt, P.E.,** has joined ECS as the director of engineering, special projects group. Originally from Richmond, Va., he has both Bachelor of Science and Master of

Science degrees in civil engineering (emphasis in geotechnical engineering) from Virginia Polytechnic Institute and State University in Blacksburg, Va. Based in the Richmond, Va. branch office of ECS, Wirt is focused on managing large, complex projects in the transportation, energy and heavy industrial sectors throughout the mid-Atlantic and Carolinas regions. Wirt brings more than 12 years of experience in deep foundation design and construction methods, shallow foundations, geotechnical ground improvement analysis and design, soft ground methodologies, retaining wall analysis and design,

geotechnical instrumentation and monitoring, project development and construction project management. A licensed Professional Engineer in the Commonwealth of Virginia and the states of New York, Delaware and Pennsylvania, he has significant experience in the industrial, commercial, transportation, public works, retail, telecommunications, federal and solid waste markets. Wirt is a member of the American Society of Civil Engineers (ASCE) (former president – Richmond Branch), is a current Virginia Section Board of Directors member of ASCE, and a member of the Deep Foundations Institute.

## Jessica M. Gaida Joins Grunley Construction's Strategic Planning Department as Marketing Manager



Jessica M. Gaida

**Grunley Construction Co., Inc.** (Grunley) is pleased to announce that **Jessica M. Gaida**, Associate DBIA, has joined the firm's strategic planning department as marketing manager.

In her new role, Gaida will serve as a key point of contact for potential clients, business partners, and industry experts in support of Grunley's strategic development into new market sectors, as well as new opportunities for working together with current clients on future projects. Gaida has worked in construction project management for seven years and has been a project manager overseeing several design-build projects for Grunley over the past four years. Gaida has a Bachelor of Science degree from The Pennsylvania State University.

## CBM Launches New Firm Brand

**CBM (Councilor Buchanan & Mitchell P.C.)**, a full-service CPA and advisory firm since 1921, is launching a new firm brand this month in conjunction with the firm's 90<sup>th</sup> anniversary.

The new brand includes a two-color, blue and gray logo that symbolizes being surrounded by the financial wisdom CBM offers and the safety that each client can feel when relying on their advice. The simplicity and clean design of the logo shows that CBM is forward-thinking and, although 90 years old, still focused on the future of their clients.

A promotional package including a folder and eight brochures was created to promote CBM's services and specialties. The concept mirrors the tagline, "Centered on Your Success." In addition to bold photos, bold colors and a confident tone, concentric circles are used to mirror the logomark on the covers of the brochures and folder as well as the main pages of the website, keeping the 'centered' concept in front of the reader at all points. The new website is [www.cbmcpa.com](http://www.cbmcpa.com).

## HITT Contracting Inc. Announces Strategic Organizational Changes

**HITT Contracting Inc.** announced three changes to the company's organizational structure, which will strategically impact the growth of its Corporate Interiors and Government sectors as well as the direction of HITT's regional offices.

**Steve Richbourg**, executive vice president, will be moving from his role as head of HITT's Corporate Interiors to lead its National Accounts team. Richbourg will also assume the reporting role for HITT's four regional offices. In his new role, Richbourg will focus on servicing and expanding multinational clients, overseeing HITT's construction travel teams, and sponsoring new regional offices.

**Brian Kriz**, senior vice president, will assume the leadership role for HITT's Corporate Interiors sector. The Corporate Interiors sector focuses on delivering commercial spaces ranging in size from a single office renovation to complete tenant / owner build-outs.

**John Britt**, executive vice president, who had been responsible for HITT's regional offices, will now focus exclusively on HITT's rapidly expanding Government sector.



Steve Richbourg



Brian Kriz



John Britt

## Rob Collins Promoted to President of Foulger-Pratt Management



Rob Collins

**Foulger-Pratt Companies**, a leading real estate property management, developer, and construction firm and voted one of the Top Fifty Best Places to Work by the *Washington*

*Business Journal*, announced the promotion of **Robert Collins**, CPM to president of commercial property management effective immediately. Collins joined Foulger-Pratt as the executive vice president of commercial property management in November 2010.

Collins has an established track record in commercial property management and business development spanning more than 25 years. Previously, he was the senior vice president with Jones Lang LaSalle and regional senior vice president with Grubb and Ellis Management Services. Collins has worked with clients on a local, regional and national basis. He holds a Bachelor's Degree from the University of Tampa and is involved in several real estate organizations including the Institute of Real Estate Management (IREM) and the International



# Industry Report

Facility Management Association (IFMA). Collins is the past president of the Maryland IREM Chapter and a recognized Instructor with IREM. Also, he has attended executive management courses at Harvard University.

Collins is an active community service member. Some of the organizations he has aided include the Leukemia and Lymphoma Society, the National Bone Marrow Foundation, and Rebuilding Together with Christmas in April and Special Love-Children with Cancer organization. He has been active with the Montgomery Village Sports Association, the Watkins Mill Booster Club, and has coached his children's various sports teams

---

## Hensel Phelps Construction Co. Board of Directors promotes Key Personnel to Vice President

---

Jerry L. Morgensen, chairman of the board, and Jeffery K. Wenaas, president and CEO jointly announced that the board of directors of **Hensel Phelps Construction Co. (Hensel Phelps)** has promoted **William A. Thompson, III**, DBIA, STS to vice president and Mid Atlantic district manager.

Thompson, a graduate of Virginia Polytechnic Institute and State University, began his career with Hensel Phelps in 1993 and rose through the ranks to become operations manager in 2003 before being appointed as vice president and Mid Atlantic district manager. Thompson will be located at the Mid Atlantic District Office in Chantilly, Va.

---

## Foulger-Pratt Contracting Achieves Prestigious Green Certification

---

**Foulger-Pratt Contracting** has joined the ranks of only 28 other construction-related companies to become a Certified Green Contractor. After an extensive application and evaluation process covering the sustainability of our office facilities, business practices, selection and usage of consumable resources and supplies, employee awareness and training; plus a third party on-site assessment, the

National Green Building Committee of Associated Builders and Contractors (ABC) designated Foulger-Pratt Contracting a Certified Green Contractor.

---

## Dominion Electric Supply Announces Promotion

---

**Dominion Electric Supply** announces the appointment of **Richard A. Williams** as CEO of the company. In addition, Williams will retain the title of president. William's leadership, vision, judgment, and management skills are well recognized within the company and the industry. He has served Dominion Electric Supply with distinction for many years.

---

## New Web Developer Hired at Frost Miller Group

---



*Sagar Mitra*

**Sagar Mitra** joined **Frost Miller Group (FMG)** as a web developer, thanks to the increased demand from clients for this type of work.

Mitra brings an extensive history with web development. He has worked on the websites of several congressional candidates such as congressmen Paul Hodes, Patrick Kennedy, and Chris Markey. In addition, he has created several large-scale web applications, built administrative websites for various cities, such as the City of Fall River in Massachusetts, and worked with the US Office of Management and Budget on web projects.

At FMG, Mitra's responsibilities will focus on website development with emphasis on adding increased functionality for FMG clients, including project databases, search capabilities, and SEO optimization. He'll also provide expanded HTML email capability and social media interactivity to web projects.

Mitra earned his Master's degree in Information Systems from George Mason University in Fairfax, Va.

Frost Miller Group's revenue for digital marketing projects jumped 60% between 2009 and 2010.

---

## Milestone Construction Continues Expansion

---



*Robert Nichols*

**Milestone Construction Services, Inc.**, a leading Washington DC metro area construction company, announced today that **Robert Nichols**, a 25-year construction

industry veteran, has joined Milestone as director of interiors and vice president of operations. Nichols will lead Milestone's fast-growing Interiors Division as well as oversee the company's core business and operational functions.

Before joining Milestone, Nichols was co-founder and managing partner at a prominent construction company for over 18 years. His proven leadership capabilities and drive are expected to greatly expand Milestone's private and interior sales, ensuring a prominent place for Milestone within the tenant fit-out market in the greater Washington DC metro area.

---

## Insurance Associates Named Silver ESOP Award Winner

---

**Insurance Associates** has been named a Silver ESOP Award winner by The ESOP Association. The Silver ESOP Awards recognize companies for their work in sustaining their ESOP for 25 years or more. The ESOP Association is the national trade association for companies with employee stock ownership plans (ESOP) and the leading voice in America for employee ownership.

With offices in Rockville, Md. and Fairfax, Va., Insurance Associates is an employee-owned company specializing in surety bonding, commercial insurance and employee benefits.

The core cause of The ESOP Association is the belief that em-

ployee ownership will improve American competitiveness, increase productivity through greater employee participation, and strengthen our free enterprise economy.

---

## CBM to Donate Fishing Tournament Winnings to the Yellow Ribbon Fund, Inc.

---

On April 29, 2011, **Councilor, Buchanan & Mitchell, P.C. (CBM)** participated in the annual Rod N' Reel Captain's Association, Inc. Pro-Am Fishing tournament. CBM took out two boats – the Rooster2 and the Lexiana for the event. The team aboard the Rooster2 placed 8th in the competitive fishing event and earned \$400 in winnings. The money will be donated to The Yellow Ribbon Fund, Inc.



*The CBM team shows off their catch.*

---

## Skanska USA Hires Russ Alcorn as Vice President for its Federal Center of Excellence

---



*Russ Alcorn*

**Skanska USA**, which is a leading provider of construction management, preconstruction, and design-build services, announced today that it's Federal Center of Excellence, whose nationwide team of

experts leads the industry in construction services for government facilities, has hired **Russ Alcorn** as vice president.

In his new role at Skanska, Alcorn will utilize his 33 years experience in federal construction to provide expertise and assistance with Skanska's federal construction projects across the United States. His responsibilities include helping to identify federal pursuits, reviewing federal solicitations, and assisting with proposals and presentations to federal agencies.

Prior to joining Skanska, Alcorn worked as an operations manager for Hensel Phelps Construction Co. where he oversaw major federal construction projects and was responsible for the procurement and execution of successful,

profitable and safe projects, including the U.S. Southern Command Headquarters, U.S. Army Corps of Engineers, a \$278 million design-build project in Miami, Fl.

Alcorn's construction experience also includes work on airports, courthouses, correctional facilities, hospitals, parking facilities, resorts and water treatment plants and includes federal clients such as USACE, FAA, NASA, FBOP, NAVFAC and GSA.

Alcorn is a registered professional engineer and is a designated design-build professional. He received his Bachelor of Science in civil engineering from Southern Illinois University.

---

## PSI Announces New Hires and Promotions

---

**Nathan Doty** has accepted the position of manager-in-training (MIT) with **PSI**. Doty is a graduate of Penn State University with a Bachelor of Science in civil engineering. He will take his MIT training in PSI's Fairfax operations office.

PSI has promoted **Dan O'Connell**, PE, GE, to geotechnical services department manager in their Fairfax operations office. O'Connell is a graduate of Brown University with a Bachelor

of Science in civil engineering. He has been with PSI since February 2011.

**Gang Zhang**, PhD has joined PSI as a project engineer. Zhang earned his Bachelor of Science in civil engineering from Harbin Institute of Technology – Harbin, China; a Master of Science in civil/structural engineering from Tsinghua University – Beijing, China; a Master of Science in electrical engineering, a Master of Science in civil/structural engineering and a PhD in civil/structural engineering from Michigan State University. He will be located in PSI's Herndon operations office.

---

## Forrester Construction Company Welcomes Senior Vice President, Project Management Operations

---



*Michael Bednarczyk*

**Michael A. Bednarczyk** recently joined Rockville-based **Forrester Construction Company** as the senior vice president, project management operations. Bednarczyk brings over 25 years of operational

# Industry Report

experience in the commercial real estate industry and significant client relationships from commercial base building projects. He earned his Bachelor of Science in civil engineering at the University of Maryland.

As Senior Vice President, Bednarczyk will work to develop Forrester Construction's private sector base building work and will be responsible for project management operations leadership and management responsibilities.

---

## Foulger-Pratt Companies Named for Washington Business Journal's Best Places to Work

---

**Foulger-Pratt Companies** is extremely proud to learn that it has been ranked #7 in the *Washington Business Journal's* "2011 Best Places to Work" in the large business category. Over 300 companies entered the competition and were then asked to have employees respond to a survey evaluating several areas of job and company satisfaction. From the survey results, the top 50 companies were selected and the rankings presented at a June 2 breakfast celebration.

---

## Forrester Construction Company Adopts Orr Boys and Girls Club in SE DC

---

As part of **Forrester Construction Company's** corporate commitment to serving the local community, the firm has adopted The Orr Boys and Girls Club located in Ward 8.

Forrester currently has a total of five ongoing projects in this Ward and has adopted the Club to add to its efforts to give back to that community.

Forrester's first initiative for Orr was a computer donation valued at over \$10,000. The donation consisted of ten laptops that will be used by the Club as an educational tool for their afterschool "Power Hour" programs. Students will use the laptops for homework assistance in order to sharpen their technol-

ogy and research skills to better prepare them for Middle School.

Forrester also has a Community Involvement Day planned for this October during which Forrester Team Members and Subcontractors will donate their time and resources to improve Orr Boys & Girls Club's facilities. Some of the upgrades include the painting of exterior playground space; repairing, pruning, and patching of playground fields and fencing; replacement of interior and exterior lights and bulbs; replacement of ceiling tile in various locations; painting of select interior spaces; and building of shelving and storage units.

The ORR Branch of the Boys & Girls Clubs in Ward 8 is a full-service year-round Club for youth ages 6 to 13 years old with approximately 150 student participants. The Club offers a variety of athletic, educational, recreational, and arts programs in a fun, safe and structured environment. The Orr Branch is located inside of the Benjamin Orr Elementary School.

---

## The Barbour Group's President Honored by Baltimore SmartCEO

---

**The Barbour Group** is excited to announce that President, **Karen Barbour**, has been chosen by Baltimore SmartCEO Magazine as one of Baltimore's top female business leaders in their fifth annual Brava! Women Business Achievement Awards. The Awards set out to recognize the region's top female CEO's who are not only growing successful companies, but are also giving back to the community.

Barbour established The Barbour Group in 2002 as an independent insurance agency focused on construction bonding and commercial insurance. Over the last nine years, under Barbour's leadership, The Barbour Group has become nationally known as one of the most knowledgeable and creative brokers in the business, providing a full spectrum of surety bonding solutions for small to mid-sized Construction Firm, Fed-

eral Contractors and Fortune 1,000 companies, such as Hensel Phelps. An advocate for the small business community, Barbour is a co-chair on Governor O'Malley's Commission for Small Business and is involved in many industry trade organizations. In addition, The Barbour Group teams with Lee Gaines of Gaines and Company, Inc., every year for their Party for A Cure event, which raises money for the Muscular Dystrophy Association. The 2011 event raised over \$65,000 in donations, ensuring further studies to find a cure against neuromuscular diseases, and providing children who are affected by these diseases the opportunity to attend a one-week summer camp.

The winners of the Brava! Awards were recognized at a special awards event on Wednesday, July 13th at the American Visionary Arts Museum in Baltimore, Md. The Brava! Award winners were also profiled in a special section of the July issue of Baltimore SmartCEO Magazine.

---

## 118 New Electricians Join the Ranks of 8,000 Skilled Washington, DC Electricians

---

**The Washington, DC Joint Apprenticeship and Training Committee (JATC)** celebrated the 65<sup>th</sup> Annual graduating class of 137 electrician and telecommunication students on June 4, 2011.

The JATC is sponsored by **Local Union 26 of the International Brotherhood of Electrical Workers (IBEW)** and the **Washington, DC Chapter of the National Electrical Contractors Association (NECA)**. The JATC offers apprenticeship programs for electricians and telecommunications. Apprentices receive health and welfare benefits, earn pay for attending class and receive regular pay raises on the job as their skill and experience increases.

The 2011 graduation ceremony was held at Martin's Crosswinds in Greenbelt, Md. Graduates from each program were 118 inside wireman, 4 telecommunications and 15 R-A



upgrade. The graduating class named one Valedictorian from each program, Eric P. Pacheco (94.8% average-wireman), Daniel J. Coppersmith (92.2% average-telecommunications) and Wayne P. McKenzie (92.4% average-R-A upgrade); and one Salutatorian from each program, Michael V. Robinson (94.1% average-wireman), Ryan L. Davis (87.1% average-telecommunications) and Bradley K. Pribble (90.5% average-R-A upgrade).

Perfect Attendance award recipients included Edwin A. Duran, Jason M. Elder, Joseph A. Herche, Patrick S. Pinkney, Michael V. Robinson, Matthew E. Wells and Christopher M. Williams. Other award categories included One Deficiency, with 10 recipients and Averages 90% and above, with 21 recipients.

The ceremony commemorates the completion of 800 hours of classroom instruction and a minimum 8,000 hours of supervised on-the-job training over five years. The graduating apprentices are some of 800 apprentices preparing for their place among more than 8,000 members of IBEW Local 26 who are employed by more than 200 union signatory contractors.

## Foulger-Pratt Contracting Announces Key New Hires

Foulger-Pratt Contracting is pleased to announce the following key new hires:



Dennis Delisle

### Dennis Delisle

has been selected as the new Director of Special Projects, responsible for leading the Special Projects division which focuses on interior renovation and tenant improve-

ments for a diverse list of client types including restaurant, specialty retail, legal, accounting, healthcare, insurance, engineering, design, banking, corporate, education, and investments. Delisle is an experienced construction executive with extensive relationships in the Washington, DC, New York and New Jersey markets.

## Engineering Services

Mechanical Engineering	Structural Engineering
Electrical Engineering	Civil Engineering
Plumbing Design	Facilities Documentation
Fire Protection Design	Asset Management

---

USGBC Education Provider

Start meeting your GBCI Continuing Education requirements.  
Contact GPI to attend our next FREE seminar.

Email Winona at [wleaman@gpinet.com](mailto:wleaman@gpinet.com) or call 240.268.1846.

---

# GPI

## Greenman-Pedersen, Inc.

Engineering and Construction Services

7650 Standish Place  
Suite 109  
Rockville, MD 20855

T 240.268.1820  
F 240.268.1821  
E [lbode@gpinet.com](mailto:lbode@gpinet.com)  
[www.gpinet.com](http://www.gpinet.com)

The Mid-Atlantic Authorized Generac Industrial Dealer

## Sales • Service • Parts • Rentals • Training

- Generator & Transfer Switch Sales • Generator Rentals
- Planned Maintenance Contracts • Parts Distribution • Load Banks
- Service of all makes of Standby Generators • Uninterruptible Power Supplies

[www.kge.com](http://www.kge.com)

1955 Dale Lane Owings, MD 20736 tel 410-257-5225 toll free 1-800-677-3815 fax 410-257-5227

## Industry Report



Elizabeth Fragale

**Elizabeth Fragale** has been selected as the new Marketing Coordinator to assist with business development and marketing responsibilities for all Foulger-Pratt Contracting

divisions including Multifamily Residential, Commercial, Special Projects, International/Secured and Healthcare. Fragale brings an impressive marketing resume working in both the construction and engineering industries. **B**



**Third Saturday,  
Monthly  
10 a.m. — Noon**

**219 Riggs Rd., NE,  
Washington, D.C.**

**[www.foodandfriends.org](http://www.foodandfriends.org)**

*Help prepare and package meals and groceries for delivery to more than 1,400 people living with HIV/AIDS, cancer and other life-challenging illnesses throughout the Washington area.*

**For more information and to register: [www.wbcnet.org](http://www.wbcnet.org)**

**WBC COMMUNITY SERVICES  
VOLUNTEER OPPORTUNITY**



**ELECTRICAL CONTRACTORS**

J.E. RICHARDS

INCORPORATED

10401 Tucker Street

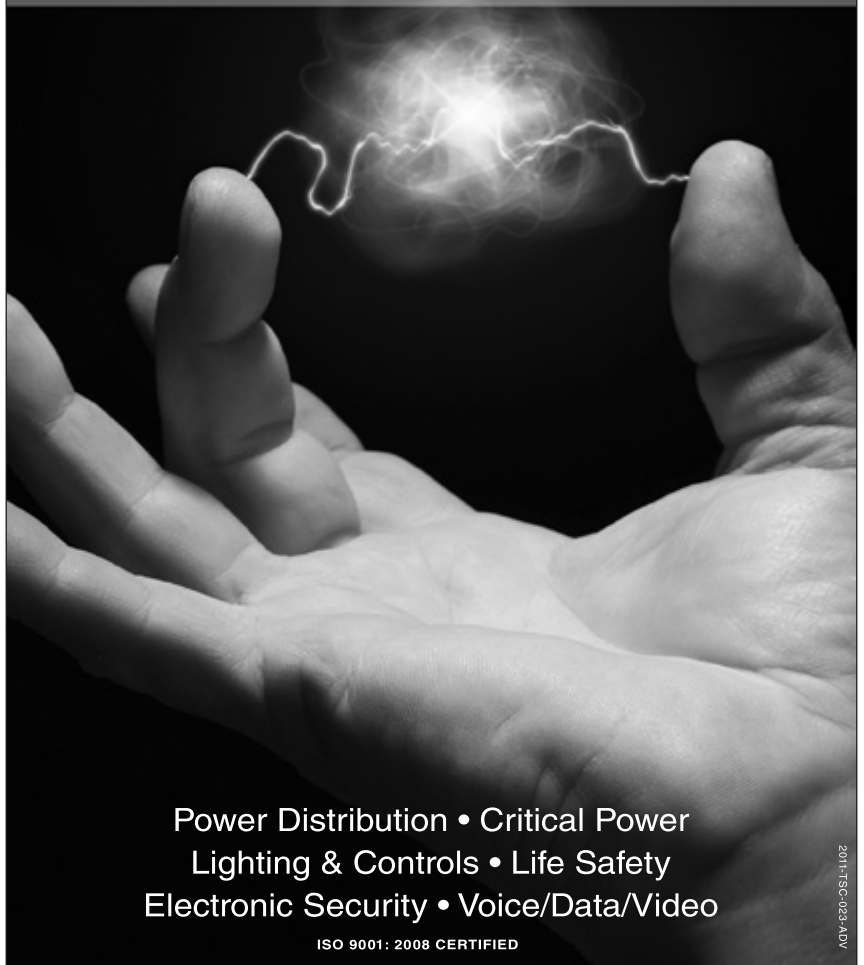
Beltsville, MD 20705

Phone: (301) 345-1300

Fax: (301) 345-2370

**SERVING MD, VA & DC**

# PROFICIENCY



Power Distribution • Critical Power  
Lighting & Controls • Life Safety  
Electronic Security • Voice/Data/Video

ISO 9001: 2008 CERTIFIED

**1-800-TRULAND**  
[www.truland.com](http://www.truland.com)

**TRULAND**  
BEYOND CURRENT

2011-TSC-023-ADV



## WBC 2011 Rebuilding Together Project

**W**ashington Building Congress members and colleagues proudly participated in the 23rd annual Rebuilding Together National Workday on Saturday, April 30. Special thanks go to House Captain Jeff Davidson (PSI), Volunteer Coordinator Anne Marie Tombros (Vango Construction Consulting), Subcontractor Liaison Rob Wenger (Tishman Construction Corporation) and Community Services Committee Chair Tim Bakos (Perkins+Will). Along with the other members of the Committee, this group went well beyond the typical scope of work to accomplish this demanding mission. Thank you also to all of the outstanding volunteers and supporters of this annual WBC community service project.

Rebuilding Together, a non-profit organization devoted to rebuilding communities and preserving affordable housing, is the nation's leading nonprofit group working to preserve affordable homeownership and revitalize communities across the country. The organization has over 200 affiliates with thousands of volunteers who every year rehabilitate and improve the homes of low-income people at no cost. Recipients of Rebuilding Together services include the elderly, disabled, military veterans and families in need.

WBC Community Services Committee Vice-Chair Jeff Davidson was nominated to serve as House Captain and

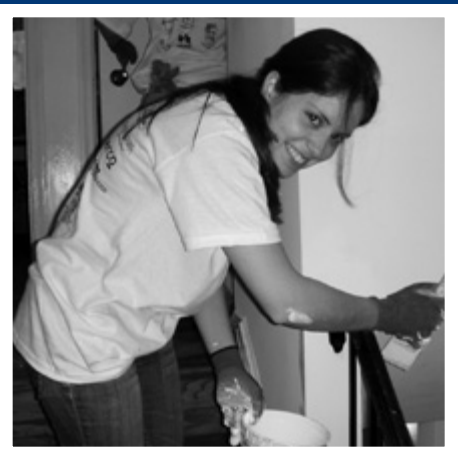
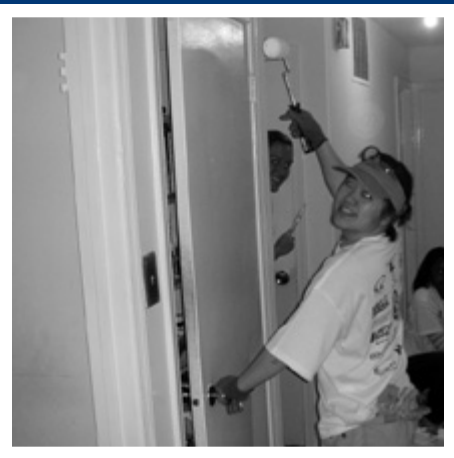
organized an impressive team of 65 volunteers, representing over 20 industry firms. Due to the amount of work involved with this year's project, many tasks were started prior to and finished following the actual project workday. An accessible driveway extension was added, fascia boards and gutters were replaced, main bathroom was remodeled, drywall was repaired, interior of the house was painted, dishwasher was replaced, electrical system was upgraded, HVAC system was serviced, and extensive yard cleanup and landscaping were completed.

Rebuilding Together is the leading national volunteer organization working in partnership with communities to rehabilitate owner-occupied low-income housing. Nationally, Rebuilding Together programs have rehabilitated over 115,000 homes and non-profit facilities using almost 2.7 million volunteers. Rebuilding Together provides home repairs free of charge and gives priority to those low-income households with older adults, persons with disabilities or families with children.

With the efforts of more than 60,000 community volunteers, Rebuilding Together Arlington/Fairfax/Falls Church has repaired over 2,500 homes and non-profit facilities since it became involved with the program in 1988. This neighbor-helping-neighbor approach unites more than 2,000 skilled and unskilled volunteers from diverse backgrounds with low-income homeowners and non-profit organizations each year. Volunteers are able to make both major and minor repairs and renovations that result in life changing improvements for the homeowners and organizations served.

For more information on the Rebuilding Together program, please go to [www.rebuildingtogether.org](http://www.rebuildingtogether.org). **B**





### Thanks Again to Our 2011 Rebuilding Together Volunteers!

**American Capital**

Kosta Kourakis

**Asmar, Schor & McKenna, PLLC**

Cameron Archer  
Catherine Trifiletti  
Chuck Asmar  
Darryl Taylor  
Emily Cicero  
John McKenna  
Michael Crowley

**Boston Properties**

Barney Silver  
Courtney Parvin  
David Daughtery  
David Youst  
Jake Stroman  
Jeff Garner  
Jon Kurtis  
Lynne Coville  
Nathanael Smithson  
Ray Ritchey  
Sam Orr  
Sarah Fieldhouse  
Steve Morken  
Susan Craig

**Crossection, Inc.**

Nina Manguiri

**DPR**

Graham Parks  
Itiah Thomas  
Kate Kerns  
Katie Koran  
Liz Tershel  
Peyton Koran

**Exponent**

Kevin Coyne

**GPI**

Adam Spatz  
Ben Bakly  
Enrique Rodriguez  
Gabriella Parra  
Jamal Anwar  
Melissa Quinn  
Winona Leaman

**Hitt**

Bernie Potere  
Elaine Grey  
Gilbert Gallo  
Larry Dickey  
Marcia Potere  
Rusty Rowles

**ISEC**

Jim Anderson

**JBG**

Mark Elias  
Paul Elias

**Lehman Smith Mcluish**

Kent Fee

**Mark G. Anderson Consultants**

Steve Willmann

**McCoy and Associates**

Jane Cherney

**Miller and Long**

Katie Kourakis

**Perkins+Will**

Cheryl Moy  
Marie Velez-Charneco  
Taylor Sill  
Tim Bakos

**PSI**

Jeff Davidson

**Tishman**

Kelly McDonald

**Vango**

Anne Marie Tombros  
Michael Miskelly  
Michael Miskelly Jr.

**WBC**

Rita Reis  
Steve Kenton

**Other**

Max Muchmore  
George Muchmore  
James Hunt  
Jim Woody

*Save the Date!*

*WBC*

*Holiday Party  
December 13*

*Congressional Country Club*

**Continued from p. 1**

in these ongoing challenging times. Keep an eye out for your 2011-12 dues invoice, *Industry Index* correction form and *Index* advertisement form. The WBC membership year runs from October 1 to September 30 and annual renewal payments are due September 30 each year. If you have any questions regarding your membership, please contact Rita Reis or Steve Kenton at (202) 292-5922.

I look forward to seeing you at Cactus Cantina on August 23. Thank you for your active participation and ongoing support of the WBC!

**Best regards,**



**Chuck Asmar**

WBC Chairman of the Board

## New Members

### Company

#### Costello Construction

10211 Wincopin Cir., Ste. 100  
Columbia, MD 21044  
p. (410) 740-9500  
f. (410) 997-2800

www.costelloconstruction.com  
cliller@costelloconstruction.com  
Representatives: **Carrie Liller  
and David Costello**

#### District Contracting Group, Inc.

1725 Eye St., NW, Ste. 300  
Washington, DC 20006  
p. (202) 349-3811  
f. (202) 349-3873

www.districtcontracting.com  
dbutler@districtcontracting.com  
Representatives: **Jeffrey S. Dawson  
and Dawn A. Butler**

#### Rosen, Sapperstein & Friedlander, Chartered

300 Red Brook Blvd., Ste. 200  
Owings Mills, MD 21117-5146  
p. (410) 581-0800  
f. (410) 581-2268

www.rschart.com  
Representatives: **Louis Sapperstein  
and Jeffrey Rosen**

#### The Lane Construction Corp.

14500 Avion Pkwy.  
Chantilly, VA 20151  
p. (703) 222-5670  
f. (703) 222-5960

www.laneconstruct.com  
information@laneconstruct.com  
Representatives: **John F. Roddy  
and Wallace R. Alphin**

### Individual

#### James Anderson

ISEC, Inc.  
9305 Berwig Ln., Ste. M  
Columbia, MD 21046-2904  
p. (410) 381-6049  
f. (410) 381-6812  
www.isec.com

### Company Profile

#### Costello Construction

Costello Construction, founded in 1993, provides commercial construction services to both the public and private sectors. The company has experience in commercial,

government, healthcare, higher education, industrial and urban infrastructure markets. Costello Construction provides a wide range of services including pre-construction analysis, design-build and sustainable construction. The company was founded on self-performance principles and is a very hands-on, proactive contractor.

#### District Contracting Group, Inc.

District Contracting Group is a commercial general contractor specializing in office tenant build-outs, retail, government, medical and capital improvements covering the geographical areas of Washington, DC, Maryland and Virginia.

#### ISEC, Inc.

Established in 1967, ISEC, Inc., has become a leading national prime trades contractor and subcontractor for specialty building interiors and equipment. A \$250 million a year business, ISEC is an employee-owned company with over 1,000 construction professionals and craftsmen located in offices nationwide. ISEC is the single source interior trades contractor, with full-service capabilities to manage every phase, from design, engineering, estimating, purchasing, and manufacturing, to contract administration and installation.

ISEC provides construction services specializing in architectural woodwork, ornamental metals, building specialties, doors, frames and hardware, laboratory casework and equipment, and general trades.

#### Rosen, Sapperstein & Friedlander, Chartered

RS&F is a regional full-service accounting, business advisory, and consulting firm founded in 1979. In our accounting practice, we provide audit, review, and compilation financial statements as well as specialty tax work, including tax consulting for high net-worth individuals. In our consulting practice, we perform various management consulting services, including systems efficiency reviews, internal control studies, M&A advisory, capital formation, valuations, budgeting, forecasting, and strategic business growth planning. With respect to our industry expertise, a significant number of RS&F's clients are in the following industries: government contracting, technology, real estate, construction, non-profits, healthcare, manufacturing and distribution.

#### The Lane Construction Corp.

A leading building of the Nation's infrastructure, Lane provides a quality product and a safe and rewarding working environment.

The **SK&A** Group

Smislova, Kehnemui & Associates, P.A.  
Potomac, MD (301) 881-1441

SK&A Structural Engineers, PLLC  
Washington, DC (202) 659-2520

Eastern Testing & Inspection Corp. (ETI)  
Potomac, MD (301) 881-8313

www.skaengineers.com

Consistently providing superior structural engineering and inspection services to our clients.



**WBC** **SUMMER NETWORKING**

**Cactus Cantina | Tues., Aug. 23 | 5:30-7:30 PM**

**Awesome Food, Networking and Full Hosted Bar**

**3300 Wisconsin Ave., NW, Wash., DC | 202-265-0965**

**One block north of National Cathedral, at Wisconsin Ave.  
and Macomb St. Register online at [www.wbcnet.org](http://www.wbcnet.org)**



PERFORMANCE!



Marriott Marquis, Washington DC

**HP** Hensel Phelps Construction Co.

4437 Brookfield Corporate Drive  
Suite 207  
Chantilly, VA 20151  
www.henselphelps.com  
(703) 828-3200



DC Court of Appeals - Renovation and Addition, Washington, DC



Donald W. Reynolds Center for American Art & Portraiture  
& The Robert & Arlene Kogod Courtyard, Washington, DC

## THE PRACTICE OF SOLUTIONS

When all you have is a hammer, every problem looks like a nail. That's the trouble with many law firms — a one-size-fits-all approach that doesn't take the client's business into account. But at Asmar, Schor & McKenna, we're "big toolbox" people, specialists in smart ideas and effective solutions from project development through delivery.

Browse [www.asm-law.com](http://www.asm-law.com) to learn more about our attorneys and qualifications, our decades of industry experience, and our services in all areas of construction law, commercial real estate transactions and commercial leasing.



**ASMAR | SCHOR  
MCKENNA**

202-244-4264

[www.asm-law.com](http://www.asm-law.com)

5335 Wisconsin Avenue, NW | Suite 400  
Washington, D.C. 20015





## Thanks Again to Our Sponsors!

### TOURNAMENT SPONSOR

Siemens Industry, Inc.

### COURSE SPONSORS

Asmar, Schor & McKenna (Norman)  
Hensel Phelps Construction Co. (Jones)  
Truland Group of Companies (Belmont)

### GOLFER GIFT SPONSOR

Smith, Currie & Hancock LLP

### RECEPTION SPONSOR

Southland Industries

### GOLF CART SPONSORS

Capital Tristate Electrical Distributor  
Precision Wall Tech, Inc.  
SIGAL Construction Corporation

### LUNCH FOOD STATION SPONSORS

Balfour Beatty Construction  
HITT Contracting Inc.  
PEPCO  
Watkins Meegan  
Watt, Tieder, Hoffar & Fitzgerald, LLP

### CLOSEST-TO-PIN SPONSORS

Nautilus Consulting, LLC  
Rexel  
Washington Gas

### LONGEST DRIVE SPONSORS

CENTRIA Architectural Systems  
PerLeetric, Inc.  
SK&A Structural Engineers  
Tishman Construction Corporation

### PUTTING GREEN CONTEST SPONSORS

Dynalectric Company  
The JBG Companies  
Manhattan Construction

### DRIVING RANGE SPONSOR

Graybar Electric

### COURSE COOLER SPONSORS

Flippo Construction Company  
Singleton Electric Company, Inc.

### HOLE SPONSORS

BE&K Building Group, LLC  
Boatman and Magnani Inc.  
Builders' Ball 2011  
DPR Construction  
Dynalectric Company  
ECS Mid-Atlantic  
Exponent  
Grunley Construction Company (3 Holes)  
Honeywell (3 Holes)  
John E. Kelly & Sons Electrical  
Lend Lease Construction, Inc.  
Manganaro Midatlantic  
Maurice Electrical Supply  
Milestone Construction Services  
P & P Contractors, Inc.  
Pel-Bern Electric Corporation  
Pizzano Contractors  
Rutherford  
Specified Electrical Systems  
SunTrust Bank  
T. A. Beach Corp.

## 2011 WBC Golf Outing Winners

### **Norman Course**

**1<sup>st</sup> Place:** Alliant Insurance Services  
**2<sup>nd</sup> Place:** Balfour Beatty Construction  
**Closest to Pin:** Jack Rexel  
**Longest Drive:**  
Tamara McNulty and Tony Barton  
**Putting Green Contest:**  
Tony Barton and Tom Eckenrode

### **Jones Course**

**1<sup>st</sup> Place:** BE&K Building Group  
**2<sup>nd</sup> Place:** Ruppert Landscape  
**Closest to Pin:** Richie Mohammed  
**Longest Drive:**  
Julie Williams and Mike Paul  
**Putting Green Contest:** Steve Pierce

### **Belmont Course**

**1<sup>st</sup> Place:** Specified Electrical Systems  
**2<sup>nd</sup> Place:** Calvert Masonry  
**Closest to Pin:** Chris Schmitt  
**Longest Drive:**  
Michelle Christian and Ryan Lavin  
**Putting Green Contest:**  
George Minor

### **Other Contest**

**50/50 Raffle Winner:** Brian Palmer

## Member Projects



*Left and right: Woodmont Central Development Approved for Downtown Bethesda, Md.*

The Montgomery County Planning Board has approved a major mixed-use initiative proposed by **Donohoe Development** for the **Woodmont Triangle** area in Bethesda, Md. **WDG Architecture** is providing architecture and urban design services for all three buildings of the multi-phase development, which totals more than 585,000 square feet and is collectively known as Woodmont Central.

The projects include two apartment towers and an office building to be constructed on two sites two blocks apart. All three buildings will include street-level retail. The sites are located just south of the National Institutes of Health campus in an aging, transit-friendly neighborhood targeted for redevelopment and increased density. The planning process was highlighted by a transfer of residential and commercial density between the two sites, optimizing both and helping to spur the revitalization of the Woodmont Triangle community. The transfer was a first for the county under new zoning regulations.

The 16- and 17-story, 494,000 square feet residential component,

known as The Gallery at Bethesda, will feature a total of 455 units with nearly 20,000 square feet of retail. The luxury residences will be built in two phases, with the 234-unit first phase set to break ground in mid-2012. A 221-unit building will follow, and will be linked to the first structure with a dynamic central plaza and streetscape, a street-level retail arcade, and three levels of underground parking.

Both buildings will feature green roofs and numerous rooftop amenities, including sun decks, sky lounges, game rooms, gardens, and swimming pools. Many of the units will offer terraces and balconies, with both buildings providing panoramic views. Designed to meet LEED®-certification requirements, The Gallery at Bethesda will feature extensive use of high-performance glass in its contemporary facade.

The office portion of the project, set nearby along Wisconsin Avenue, is a six-story, 91,600 square feet building that includes more than 10,500 square feet of retail and three levels of underground parking. Designed to LEED-Silver standards, the building will also feature a predominantly glass facade. In addition

to Hammann, WDG Architecture's team includes **Tadger Cohen Edelson Associates** for structural engineering.

The team of **AECOM** won an Honor Award from the West Virginia chapter of the American Institute of Architects for the design of a new **Joint Interagency Training and Education Center (JITEC)**, located at Camp Dawson, near Kingwood, Wv. The project is an expansion to the Regional Training Institute (RTI).

Currently under construction, the project began with a review of the existing base master plan, followed by a revision to the overall master plan concept. To facilitate the expanded program, the team recommended locating the new campus entry more centrally to the proposed campus. By placing the secure administration building in this central location, the plan establishes a hierarchy of structures on the site and an iconic entry presence.

The facility includes a new Administration and Training Building, new classroom additions, and a substantial increase in the billeting (hotel rooms) on site. The 283,000 square feet facility is designed to achieve LEED Silver



## Member Projects



**Top and bottom:** AECOM wins AIA West Virginia Honor Award for design of Joint Inter-agency Training and Education Center.

certification. The material palette of the administration building is composed of cast-in-place concrete walls, a curtain wall, and copper cladding that pays homage to the rock formations of West Virginia. The billeting expansion material palette reflects the existing RTI, with glass and metal panel clad executive suites accenting the corners.

**Foulger-Pratt Contracting** announced it hosted the traditional BBQ lunch for construction workers and guests to celebrate the topping

out of the **Paul S. Sarbanes Transit Center**. About 300 people joined the February celebration to mark completion of the three-story structure which includes 16,000 cubic yards of concrete, 2,000 tons of rebar, and 90 caissons sized up to 72" in diameter.

When completed in December 2011, the Transit Center will connect commuters via five escalators and three elevators to Metrorail and MARC trains, plus 34 bus bays for WMATA Metrobus, Montgomery

County Ride-On, MTA regional commuter bus, Van-Go shuttle, Inter-city Buses and University of Maryland Shuttle. The state-of-the-art Transit Center will feature an Automated Energy Management System (AEMS) that allows the Center to be monitored and controlled from the WMATA Jackson-Graham headquarters building in Washington, DC.

The Paul S. Sarbanes Transit Center is Foulger-Pratt Contracting's first project to have a YouTube following. Early in the construction phase, extensive blasting was required to excavate the site which is surrounded by adjacent high-rise office towers.

**HITT Contracting Inc.** recently topped out the new **Springfield Operations Center (SOC)** of Washington Gas Light Company. Construction began in August 2010 on the 20-acre, campus-style facility, located in Springfield, Va. Upon completion in 2012, the complex will include a new 122,000 square foot turnkey build-to-suit office complex, a 213,000 square foot precast parking structure, surface parking lots, and a 60,000 square foot Industrial Building housing a fully functional transportation and vehicle maintenance facility, training rooms, machine / welding shops and storage areas. The landscaping will add trees, shrubs, and perennials to the area and includes a terrace level courtyard off of the café for outdoor seating.

The project team for the new facility includes HITT Contracting Inc. as the general contractor, construction management firm **Jones Lang LaSalle**; structural engineering firm **Cagley & Associates**; MEP and engineering firm **GHT Limited**.

**Heery International** has been awarded a contract by the District of Columbia Department of Real Estate Services to provide construction management services for the renovation and new construction of the **611 N Street NW Women's Transitional and Permanent Supportive Housing facility**.

The project includes demolition of the existing outdated structure that houses the program and service functions of the Women's Transitional and Permanent Supportive Housing facility

## Member Projects

operated by New Endeavors by Women. It also involves construction of a new four-story, 23,070 square foot building that will be constructed on the existing foundation. Construction is expected to begin in June 2011, with an estimated completion date of September 2012.

The building received a 2010 Honor Award for unbuilt architecture from the American Institute of Architects, Washington, DC chapter. The building was designed to achieve LEED (Leadership in Energy and Environmental Design) certification from the U.S. Green Building Council and includes features such as energy-efficient lighting and mechanical systems, ample daylighting, a green roof, and vegetation wall.

The Disabled Veterans' LIFE Memorial Foundation announced today that Washington, DC-based **Tompkins Builders**, which has built many of the most well-known landmarks in the nation's capital, will construct the **American Veterans Disabled for Life Memorial**.

The Memorial will be the nation's first and only permanent public tribute to the more than three million living disabled American veterans and the countless hundreds of thousands who have died. A ceremonial groundbreaking attended by more than 500 veterans, disabled veterans, government dignitaries, VIPs, and supporters was held in November 2010 at the site, a 2.4-acre triangle between Washington Avenue SW, C Street SW and Second Street SW, across from the U.S. Botanic Garden and within view of the U.S. Capitol.

Through the juxtaposition of granite and glass, the Memorial will convey an interplay of strength and vulnerability, loss and renewal. The focal point will be a star-shaped reflecting pool, its surface broken only by a single ceremonial flame. Three walls of laminated glass with text and images and four bronze sculptures will tell the universal story of the disabled veteran's pride of service, trauma, challenge of healing, and discovery of purpose.

**HESS Construction + Engineering Services**, a leading builder of educational facilities in the Mid-Atlantic, was selected by Montgomery County



**Top:** Interior of the Paul S. Sarbanes Transit Center, Silver Spring, Md. **Bottom:** American Veterans Disabled for Life Memorial (AVDLM), Washington, D.C.

Public Schools (MCPS) to manage construction of the **Gaithersburg High School modernization project**.

The \$93 million modernization project includes a phased renovation, addition and replacement building resulting in a 420,000 square foot state-of-the-art facility. The existing school will remain in operation during the construction period. Construction will proceed in phases to ensure the safety and comfort of the students, faculty and staff and will continue until August 2014.

The project will meet Silver LEED certification, in conformance with Leadership in Energy and Environmental Design (LEED) through the United States Green Building Council (USGBC). Energy saving features can be found throughout the design and include an extensive green roof, a geothermal well HVAC system, enhanced commissioning, and occupancy sensor control lighting. The new building design encourages a flexible approach that accommodates changing educational

## Member Projects



*Plan for Wakefield High School, Arlington, Va.*

programs, departments and interdisciplinary teaching methods, and is an efficient and cost-effective use of space.

The learning spaces feature science labs, two greenhouse spaces, automotive repair and body shop, technology lab, and cosmetology lab. The existing auditorium will undergo a complete renovation to include a theatrical stage rigging system. The 16,000 square feet gymnasium design includes two full size basketball courts, two volleyball courts and twelve badminton courts.

Modernization of the outdoor athletic spaces includes new softball and baseball fields, basketball courts, tennis courts, an adaptive play area and synthetic turf practice field. A ticket booth, plaza, concession stand, restrooms, press-box, and grandstand will replace the existing outdated facilities. Accessibility for persons with disabilities will be provided to all of the courts and fields throughout the site.

**HITT Contracting Inc.** was recently awarded the second phase renovation of the **Hilton McLean Hotel** in Tysons Corner, Va., which

will include the complete retrofit of ballrooms, pre-function areas, meeting rooms and an exterior side entrance.

The award follows HITT Contracting's recent successful completion of the first phase, five-month renovation during which the hotel remained open without disruption to guests. This renovation encompassed a major reconstruction of the main entrance lobby and other public spaces including the guest reception and public restrooms, where high-end finishes and marble flooring created an elegant atmosphere. HITT Contracting also constructed a new Harth Restaurant and new entry Porte cochere. The renovations will bring a new, contemporary ambiance to the Hilton McLean Hotel. Other Hilton McLean Hotel team members included **Mark Anderson Consultants**.

**SIGAL Construction Corporation** has delivered a turnkey base building renovation and multi-floor tenant fit-out at **425 Eye Street**. Today, the tenant—Veterans Administration (VA)—commences its lease totaling 285,000 square feet.

The redeveloped building at 425 Eye Street is situated in the heart of the Mount Vernon Triangle submarket in the East End of Washington, DC. In 2010, it attained LEED® CS v2.0 Gold certification.

Transitioning from successfully delivering the base building renovation, SIGAL was retained to build out its major tenant space situated on nearly six full floors. The project schedule for VA's space was accelerated with critical special-use areas turned over for operational use within three months of site mobilization. Unique attributes of the project include a central high-density filing room which required slab reinforcement with steel beams and additional concrete. VA also specified a glass wall partition system provided and installed by DIRT Systems with one floor receiving more than one mile of linear feet of their product. A total of 45 high-tech conference rooms with state-of-the-art audio visual capabilities were built throughout VA's space. Additional state-of-the-art systems and security upgrades were installed throughout the building, including a retrofit of the recently renovated building lobby to accommodate x-ray screenings and outside visitors for in-person and video conference hearings. VA's space is targeted to achieve LEED® CI v3.0 Silver certification.

A ceremonial groundbreaking was held on Thursday, June 9<sup>th</sup> to mark the soon-to-start construction of the new **\$100 Million Wakefield High School**, which is one of three public comprehensive high schools in Arlington County, by **Forrester Construction Company**. The groundbreaking was attended by school and public officials, as well as various community, parent, and student representatives.

This project will involve the construction of a new 380,000 square foot four-level school for a population of 1,600 students to replace the existing 60-year-old building. The new school will feature 50 classrooms, a large student commons area, state-of-the-art science labs, music and art rooms, media center, 625-seat auditorium, two gyms, new athletic fields, two indoor pools, a diving well, and a geothermal heating and cooling plant.





*AECOM to design new large-scale, Social Security Administration complex, Baltimore, Md.*

The project will also include abatement and demolition of the existing school and pool buildings once occupancy of the new building is achieved.

The project is required to meet LEED Silver Certification, but is expected to achieve Gold. Actual construction work will start shortly after July 1<sup>st</sup>, with completion of the school building due in time for the opening of the 2013-14 school year.

As part of a lease team led by **The JBG Companies**, **AECOM** has been selected in a national competition to design a new **Social Security Administration complex** in northwest Baltimore. The project, mandated to meet or exceed LEED-NC Silver certification, was procured by the US General Services Administration using a best value process, which champions design excellence.

The complex will sit on an approximately 11-acre site and includes a two-building office facility connected by a central atrium, comprised of 538,000 rentable square feet, a 1,076-car parking garage and a separate

daycare center. AECOM's winning 'arc of light' design will bring light deep into the complex, animating a central organizational spine that will be the community gathering place.

The design features efficient, flexible structural system, an attractive, maintainable building envelope, and high-performance building engineering systems to accommodate changing needs over the building's life. **Clark Construction** is the general contractor for the project.

Part of Maryland's Transit-oriented Development (TOD) initiative, the project is sited near public transportation and intended as a catalyst to transform the surrounding area, attract and integrate new development, and extend the value of existing businesses and neighborhoods. The goal is to create a vibrant, desirable community for residents to live, work and play.

**Hensel Phelps Construction Co.** of Greeley, CO has selected, **Frost Miller Group (FMG)** to develop the construction company's **corporate website**.

Hensel Phelps, an employee-owned general contracting, construction management, and design-build company, and FMG, an integrated marketing communications firm have worked together for 13 years, allowing FMG to design Hensel Phelps original and current corporate websites.

FMG is already in the process of designing a new website and will soon begin development which will feature a content management system and a searchable product database showcasing the contractor's diverse range of project types for public and private clients, from new construction and renovation of commercial office to sports facilities.

**Foulger-Pratt Companies** closed on the acquisition of **the 1,106 United Portfolio**. The portfolio consists of four, 1960's- vintage garden apartment communities divided between the Cheverly and Forestville submarkets of Prince George's County.

Foulger-Pratt is a local, family-owned developer of residential and commercial properties, and will serve as the developer, con-

## Member Projects



*Enviva, LP Headquarters, Bethesda Md.*

tractor and property manager for the United acquisition.

The total transaction size was \$90.1 million, and represents one of the largest purchases in the county. The acquired properties were Cheverly Terrace (366 units), Hanson Arms (189 units), Pennbrooke Terrace (404 units), and Valleybrook Apartments (147 units). Foulger-Pratt will be investing \$11,000 per unit in renovation, starting this summer and proceeding with rehab over two-three years as residents turnover. The renovation work will enable rent increases of \$125 per month, plus increased utility charges for residents, but the communities will remain affordable havens of workforce housing.

Exterior and common area improvements will include new windows and balconies, roofs, asbestos abatement, landscaping, paving, awnings, controlled access, monument and directional signage, and refurbished leasing offices and fitness centers. Interior improvements entail new kitchens with raised panel cabinets, new countertops, flooring, lighting, as well as bath renovations with new vanities, medicine

cabinets, ceramic tile repair, and finally new carpeting and repainting throughout. The Cheverly properties, located on the Landover Metro, will also obtain washer/dryers in many units along with plumbing and electrical upgrades.

The \$12 million construction of activity will be undertaken by Foulger-Pratt Contracting, while the property management is being performed by Foulger-Pratt Residential. With this acquisition, Foulger-Pratt's newly formed residential division now owns and manages over 2,500 units in the metropolitan area. It will be growing steadily as new projects come on line, such as the Citron Apartments at the Silver Spring Metro, slated to break ground this July. The United Portfolio will be rebranded as Foulger-Pratt Residential's "Station Apartments" concept – this is the firm's middle market product line, offering first rate service, amenities, and access to public transit.

**Coakley & Williams Construction** has started construction on the new **Equipment and Maintenance Operations Center** in Rockville, Md. The LEED Gold project comprises

13 buildings including administrative buildings, vehicle maintenance buildings, a parking garage, warehouse, and storage building. The \$78 million project was designed by Baker & Associates for the Montgomery County Department of General Services.

The guiding concept for the **AECOM**-designed four-story, 170,000 square foot expansion of the **Air National Guard (ANG) Readiness Center** building at Andrews Air Force Base in Md. was to create flexible multi-use areas that could be easily reconfigured. The facility can evolve with mission changes and is already promoting employee collaboration, setting a new standard for ANG facilities at bases nationwide.

The design team addressed circulation, congregation, and open-space office areas by reserving space for the window walls, thereby maximizing infiltration of natural light. Centralizing the core features—such as plumbing and common-use areas—dramatically reduced private offices, and eliminated hard-wall construction.

To meet LEED-NC Silver certification requirements, AECOM conducted sustainability charrettes with ANG stakeholders; this resulted in solutions to reduce energy, water consumption, and maintenance costs. Some of the facility's sustainable building features include a green roof, the first on an ANG facility, which retains a significant portion of rainwater and reduces thermal impact, highly efficient HVAC systems, and indoor lighting controls. AECOM also designed an automated window shade system that maximizes natural light while managing heat gain and loss.

**GPI/Greenman-Pedersen, Inc.** recently completed design of the new **Enviva, LP headquarters** in Bethesda, Md. The renovation of office space in this 12-story 1986 building recently achieved LEED CI-Silver Certification from the USGBC. The design included zoning controls to optimize HVAC energy performance, diversion of 95% of construction waste from landfills, use of 100% green power, and 30% reuse of existing materials. **B**

---

### *Project Highlight*

---

The new 72,000 sq ft Administrative Office Building One (AOB-1), the first new building in the New Town Program at the NASA Langley Research Center, sets the standard for the many buildings to come at Langley in the use of technology, sustainable practices, and new workplace quality standards. The building just achieved LEED Platinum certification from the U.S. Green Building Council. To offset the demand for overhead lighting, the design team incorporated aggressive daylighting strategies into the design, including strategic building orientation, a shallow building depth, generous ceiling heights, solar activated light sensors, exterior shading elements that address specific orientation geometries, and customized glazing treatments. A vegetated roof—the first at Langley—reduces heating and air conditioning costs, extends the lifetime of the roof, absorbs 15 to 90 percent of storm water, and reduces noise transfer. On-site renewable energy sources include a Building Integrated Photovoltaic array at the lobby skylight and penthouse roof. As part of an overall campus energy master plan, AOB-1 will offset cooling and heating loads through a geothermal well field - also the first at Langley - and will soon be followed by a similar field to service the next building in the New Town Program, the Integrated Engineering Services Building. (by Tim Coogan, R.M. Thornton, Inc. and Michelle Heim, AECOM)

---

### *LEED 2012*

---

U.S. Green Building Council expects to release their next LEED Version on November 7, 2012. The changes will affect the Building Design & Construction, Interior Design & Construction, Building Operations & Maintenance, Homes, and Neighborhood Development Rating Systems. Differences to the LEED 2009 include new prerequisites, new credits, new credit categories, changes to technical content, and revised point distribution. The new credit categories are Integrated Process, Location



*NASA New Town Program at Langley Research Center, Administrative Office Building One (AOB-1), Hampton, Va. (WBC Members include AECOM and The Whiting-Turner Contracting Company).*

and Transportation (Sustainable Sites remains), and Performance. Performance highlights the importance of on-going operational performance, something previously harshly criticized as missing by opponents of the rating system. The second public comment period is currently open. For additional information, visit [www.usgbc.org](http://www.usgbc.org). (Contributed by Winona Leaman, LEED AP BD+C, GPI/Greenman-Pedersen, Inc.)

---

### *LEED vs. 189.1 vs. IGCC*

---

The LEED rating system has experienced an explosive amount of growth in the past ten years. In fact, it is so popular that building contracts have been written requiring a certain level of certification. Unfortunately, LEED was never intended to be used to enforce minimum building requirements. It is also questionable whether or not one can enforce a contract contingent on the voluntary approval of a non-signatory third party.

Seeing this need for an enforceable standard, ASHRAE took the LEED rating system and codified it by rewriting it in normative language. The result is ASHRAE standard 189.1. At one time there was talk that Standard 189.1 would become an alternate compliance path toward LEED certification. The International Code Council has since stepped in and used this standard as a basis for its own green construction code,

the IGCC. Today ASHRAE 189.1 is an optional compliance path for conforming to the IGCC. This is analogous to Standard 90.1 being an optional conformance path to complying with the IECC.

This situation is a bit upside down at the moment since the LEED rating system, ASHRAE 189.1 and the IGCC all define similar requirements. There are even instances where the IGCC can be more stringent than LEED. The rating system is no longer leading the sustainability movement. This identity crisis is why 189.1 did not become an optional compliance path toward LEED certification. This is also why we expect the next version of LEED to substantially raise the requirements for certification. You can expect that compliance with the IGCC will earn a certain number of prerequisite points but that certification will be much more stringent. This will restore LEED's role of leading the industry above and beyond the bare minimum legal requirements defined by the codes. (Contributed by Adam Spatz, P.E., LEED AP BD+C, GPI/Greenman-Pedersen, Inc.) **B**

---

To have your firm's Green Building achievements highlighted on this page, please contact Winona Leaman at [wleaman@gpinet.com](mailto:wleaman@gpinet.com). Your topic suggestions and comments are also appreciated.



# THE 2011 BUILDERS' BALL

## CENTER COURT \$20,000

Skanska USA

## SKYSCRAPER \$12,000

Frost Miller Group  
Precision Wall Tech, Inc.  
Siemens Industry  
Washington Business Journal

## CAPITAL \$8,000

AECOM  
Associated General Contractors  
of Metropolitan  
Washington DC  
Clark Construction Group, LLC  
Foulger-Pratt  
Hensel Phelps Construction Company  
K&L Gates LLP  
PEPCO  
Rippeteau Architects  
The JBG Companies  
Watkins Meegan

## PILLAR \$4,000

Chiaramonte Construction Company  
CREW DC  
David M. Schwarz Architects  
Dynalectric Company  
Grunley Construction Company, Inc.  
Haley & Aldrich, Inc.  
Insurance Associates  
James G. Davis Construction Corporation  
J.E. Richards Electric, Inc.  
Karin's Florist  
NRI  
Office Environments Int'l  
SIGAL Construction Corporation  
Society for Marketing Professional  
Services - National  
Walter P Moore  
W.E. Bowers

## 2011 SPONSORS

### FOUNDATION \$2,000

Aronson LLC  
Asmar, Schor & McKenna, PLLC  
Balfour Beatty Construction  
Bohler Engineering  
Boland Trane  
Boston Properties  
Bradley Arant Boulton Cummings LLP  
Brookfield Properties  
Cagley & Associates  
ECS Mid-Atlantic  
GCS, Inc.  
Goldin & Stafford, LLC  
GPI / Greenman-Pedersen, Inc.  
HDR Architecture  
HESS MECHANICAL CORPORATION  
Held Enloe & Associates, LLC  
Marion Construction Inc.  
McManus & Darden, LLP  
Ober D Kaler  
Oerth Associates - Executive Search  
P&P Contractors, Inc.  
Peckar & Abramson, P.C.  
Shapiro & Duncan, Inc.  
Smith Pachter McWhorter PLC  
The Kane Company  
Turner Construction  
Washington Gas  
Washington Property Company  
ZGF Architects LLP

## SPECIAL SPONSORSHIPS

### VENUE/NEIGHBORHOOD \$15,000

### DINING BARS \$14,000

### ENTERTAINMENT \$10,000

HITT Contracting Inc.

### CORDIAL & COFFEE BARS \$5,500

### DESSERT BUFFET \$5,500

First Potomac Realty Trust

### INNER CIRCLE RECEPTION \$3,000

GHT Limited  
PSI  
Watt, Tieder, Hoffar & Fitzgerald, LLP

### BANQUET VOLUNTEERS \$2,000

### VALET PARKING \$1,000

Ames & Gough Insurance  
/ Risk Management  
Pulstrata  
SMACNA Mid-Atlantic  
Welch & Rushe, Inc.  
Whiteford Taylor & Preston LLP  
Zuckerman Gravelly Management Inc.

### ADVERTISING CAMPAIGN \$500

*(For Supporting Organizations Only)*

Associated Builders and Contractors of  
Metropolitan Washington  
Associated General Contractors  
of Metropolitan  
Washington DC  
District of Columbia Building  
Industry Association  
DC Metropolitan Subcontractors  
Association  
Washington Building Congress/  
WBC Foundation

### OTHER DONATIONS

John E. Kelly & Sons  
Electrical Construction

# PLEDGE FORM

CONTACT NAME

POSITION

COMPANY/ORGANIZATION

E-MAIL

ADDRESS

CITY/STATE/ZIP

PHONE

FAX

## SELECT YOUR SPONSORSHIP

*Please call for availability*

SKYSCRAPER - \$12,000

DESSERT BUFFET - \$5,500

CAPITAL - \$8,000

CORDIAL AND COFFEE BARS - \$5,500

PILLAR - \$4,000

INNER CIRCLE RECEPTION - \$3,000

FOUNDATION- \$2,000

VALET PARKING- \$1,000

VISA

MASTERCARD

AMEX

CHECK (payable to Builders' Ball)

CREDIT CARD #

SECURITY CODE

NAME ON CARD

EXP. DATE

CREDIT CARD BILLING ADDRESS

CARDHOLDER SIGNATURE

CHECK #



### RETURN PLEDGE CARD WITH PAYMENT TO:

2011 BUILDERS' BALL c/o WBC Foundation  
1620 Eye Street, NW Washington, DC 20006  
P (202) 861-8007 F (202) 861-8008  
[www.buildersball.org](http://www.buildersball.org) [buildersball@wbcnet.org](mailto:buildersball@wbcnet.org)

**PLEDGE AND PROGRAM AD COPY MUST BE RECEIVED BY SEPTEMBER 5, 2011 TO BE INCLUDED IN THE PROGRAM**

---

# FY'2012 WBC Board of Directors Nominations

---

**TO:** Washington Building Congress Members

**FROM:** Jonathan Kurtis, Nominating Committee Chairman

The WBC Nominating Committee is seeking the recommendation of dedicated members who would like to make a contribution to the overall goals and objectives of our association. The committee has developed the following brief nomination form to encourage membership participation in the process.

Please submit your nomination on this form by Friday, August 19, 2011. The election of FY'2012 WBC officers and directors will take place on Tuesday, September 27, at the WBC Annual Meeting and Fall Kickoff event at Columbia Country Club. The new Board of Directors term commences October 1, 2011.

## OFFICER & DIRECTOR POSITIONS AVAILABLE

**CHAIRMAN-ELECT.....(1 year term) *One Position***

**VICE-CHAIRMAN .....(1 year term) *Three Positions***

**TREASURER.....(1 year term) *One Position***

**SECRETARY.....(1 year term) *One Position***

**DIRECTOR 2011-2014.....(3 year term) *Three Positions***

## WBC OFFICER & DIRECTOR NOMINATION FORM

There is no limit to the number of nominations a WBC member can submit. Please use a separate form for each nomination. Self-nominations are permitted. Please submit nominations by August 19, 2011.

Name of Nominee (please print): \_\_\_\_\_

Nominated Position: \_\_\_\_\_

Company: \_\_\_\_\_

Address: \_\_\_\_\_

City/State: \_\_\_\_\_ Zip: \_\_\_\_\_ Phone: \_\_\_\_\_

Fax: \_\_\_\_\_ Email: \_\_\_\_\_

~~~~~

Nominated By (please print): \_\_\_\_\_

Company: \_\_\_\_\_

Signature: \_\_\_\_\_ Date: \_\_\_\_\_

Phone: \_\_\_\_\_ Email: \_\_\_\_\_

**Please submit on or before August 19, 2011 to:** WBC Nominating Committee, Washington Building Congress, 1620 I Street, NW, Suite 810, Washington, DC 20006 or fax nominations to (202) 429-1922.





FALL KICK OFF & INSTALLATION OF OFFICERS

*The*

WBC

BULL & OYSTER  
PARTY

SEPTEMBER 27, 2011  
5:30 – 8 PM

COLUMBIA COUNTRY CLUB  
7900 CONNECTICUT AVE., CHEVY CHASE, MARYLAND

BUSINESS ATTIRE PLEASE — JACKET REQUIRED BY CLUB

*Please join us as we celebrate the culmination of another outstanding year for the Washington Building Congress and our leadership team. The 74th annual celebration is being held in conjunction with the always popular Bull & Oyster event held the last seven years. The menu will once again include a variety of freshly shucked oysters, peeled shrimp, crab cakes, steamship round of beef and a full hosted bar.*

# WBC Calendar & Advertising Information

## Events Calendar

### August

- **August 20**, 10:00 a.m. – 12:00 p.m.  
WBC Community Service  
Food & Friends, Washington, DC
- **August 23**, 5:30 p.m. – 7:30 p.m.  
Summer Networking – Cactus Cantina  
Washington, DC

### September

- **September 17**, 10:00 a.m. – 12:00 p.m.  
WBC Community Service  
Food & Friends, Washington, DC
- **September 27**, 5:30 p.m. – 8:30 p.m.  
Fall Kickoff / Bull & Oyster Party  
Columbia Country Club, Chevy Chase, Md.

### October/November

- **October 15**, 10:00 a.m. – 12:00 p.m.  
WBC Community Service  
Food & Friends, Washington, DC
- **November 19**, 10:00 a.m. – 12:00 p.m.  
WBC Community Service  
Food & Friends, Washington, DC
- **November 19**, 6:30 p.m. – 12:00 a.m.  
2011 Builders' Ball  
National Building Museum  
Washington, DC

## 2011 Editorial Calendar

The **Bulletin** covers issues of importance to the building industry, news about WBC members and information about upcoming events. The topics listed below will be covered as feature articles in upcoming issues of the **Bulletin**. Persons interested in contributing information or advertising should contact WBC before the third week of the month preceding the issue. To place an ad, submit material or for more information call **(202) 293-5922**.

### January

Members Giving Back

### Feb./Mar.

Wellness in the Workplace

### April

Craftsmanship Awards

### May/June

Big Development Projects

### July/August

Community Services

### September

Electric Vehicle Charging Stations

### October

TBD

### November

TBD

### December

TBD

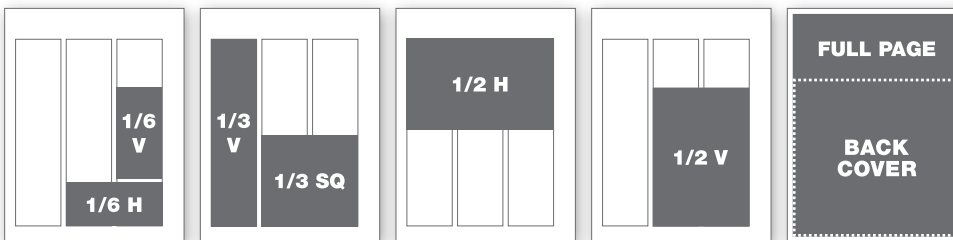
## Ad Rates

|                                | 1 time | 5 times | 10 times |
|--------------------------------|--------|---------|----------|
| <b>Member Rates:</b>           |        |         |          |
| <b>Black and White</b>         |        |         |          |
| 1/6 horizontal or 1/6 vertical | \$155  | \$130   | \$110    |
| 1/3 vertical or square         | \$230  | \$190   | \$150    |
| 1/2 horizontal or vertical     | \$430  | \$350   | \$290    |
| Full-page                      | \$630  | \$510   | \$410    |
| <b>Color</b>                   |        |         |          |
| Inside Front Cover             | \$730  | \$590   | \$480    |
| Inside Back Cover              | \$730  | \$590   | \$480    |
| Back Cover                     | \$830  | \$670   | \$540    |

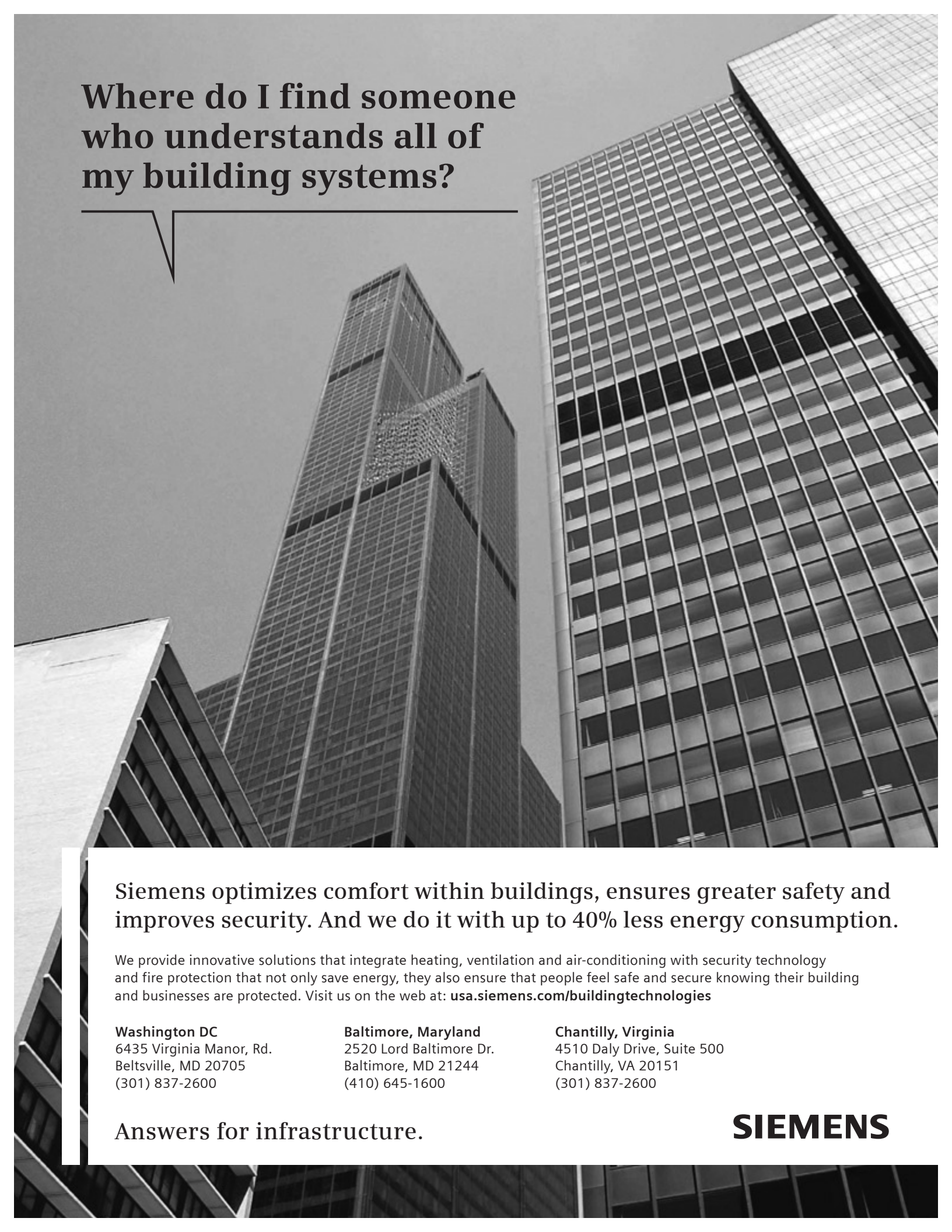
|                                | 1 time  | 5 times | 10 times |
|--------------------------------|---------|---------|----------|
| <b>Non-member Rates:</b>       |         |         |          |
| <b>Black and White</b>         |         |         |          |
| 1/6 horizontal or 1/6 vertical | \$210   | \$176   | \$149    |
| 1/3 vertical or square         | \$311   | \$257   | \$203    |
| 1/2 horizontal or vertical     | \$581   | \$473   | \$392    |
| Full-page                      | \$851   | \$689   | \$554    |
| <b>Color</b>                   |         |         |          |
| Inside Front Cover             | \$986   | \$797   | \$648    |
| Inside Back Cover              | \$986   | \$797   | \$648    |
| Back Cover                     | \$1,121 | \$905   | \$729    |

Magazine trim size: 8.5" w x 11" h | Live area: 8.375" w x 10.875" h

## Ad Sizes



|                   |                               |
|-------------------|-------------------------------|
| 1/6 horizontal    | 4.43" w x 2" h                |
| 1/6 vertical      | 2.1" w x 4.2" h               |
| 1/3 square        | 4.43" w x 4.2" h              |
| 1/3 vertical      | 2.1" w x 8.6" h               |
| 1/2 horizontal    | 6.75" w x 4.2" h              |
| 1/2 vertical      | 4.43" w x 6.38" h             |
| Back Cover        | 8.0" w x 7.5" h               |
| Full-page         | 8.25" w x 10.75" h            |
| Full-page + bleed | 8.5" w x 11" h<br>+125" bleed |



**Where do I find someone  
who understands all of  
my building systems?**

**Siemens optimizes comfort within buildings, ensures greater safety and improves security. And we do it with up to 40% less energy consumption.**

We provide innovative solutions that integrate heating, ventilation and air-conditioning with security technology and fire protection that not only save energy, they also ensure that people feel safe and secure knowing their building and businesses are protected. Visit us on the web at: [usa.siemens.com/buildingtechnologies](http://usa.siemens.com/buildingtechnologies)

**Washington DC**  
6435 Virginia Manor, Rd.  
Beltsville, MD 20705  
(301) 837-2600

**Baltimore, Maryland**  
2520 Lord Baltimore Dr.  
Baltimore, MD 21244  
(410) 645-1600

**Chantilly, Virginia**  
4510 Daly Drive, Suite 500  
Chantilly, VA 20151  
(301) 837-2600

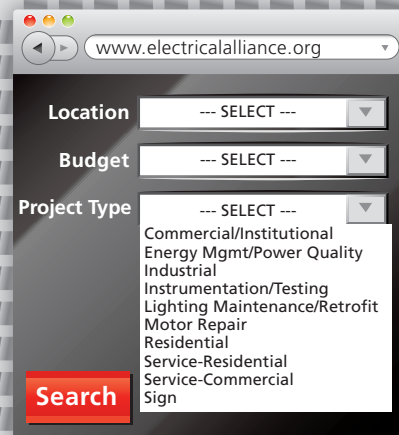
**Answers for infrastructure.**

**SIEMENS**



# MAKE CONTACT WITH THE **RIGHT** ELECTRICAL CONTRACTOR

For projects big and small, from maintenance to renovation to new construction, you'll find the right electrical contractor for your needs at our new website, [ElectricalAlliance.org](http://ElectricalAlliance.org). Our experienced members—located throughout Maryland, Virginia and Washington, DC—deliver the cost-effective solutions you want.



www.electricalalliance.org

Location --- SELECT ---

Budget --- SELECT ---

Project Type --- SELECT ---

- Commercial/Institutional
- Energy Mgmt/Power Quality
- Industrial
- Instrumentation/Testing
- Lighting Maintenance/Retrofit
- Motor Repair
- Residential
- Service-Residential
- Service-Commercial
- Sign

Search



[www.ElectricalAlliance.org](http://www.ElectricalAlliance.org)

**THE ELECTRICAL ALLIANCE**

National Electrical Contractors Association and Local 26 IBEW

200 Contractors and 8,000 Electricians **United for Quality.**