

WBC Evening Program Sponsors



Corporate Sponsor

AECOM TISHMAN

Steel Sponsor



Fox Rothschild LLP
ATTORNEYS AT LAW

Steel Sponsor

Freestate
ELECTRICAL COMPANIES

Steel Sponsor



An Exelon Company

Steel Sponsor

SIEMENS
Ingenuity for life

Steel Sponsor



Steel Sponsor



Dynalectric

An EMCOR Company

Aluminum Sponsor



Aluminum Sponsor

CLARK
CONSTRUCTION

Concrete Sponsor



COHEN SEGLIAS
PALLAS GREENHALL & FURMAN PC

Concrete Sponsor



Telligent

Masonry Construction

Concrete Sponsor

Silver Line Corridor Industry Impact

Program Panelist

Capital Rail Constructors – a Clark & Kiewit Joint Venture
Jim Ansari – *Senior Vice President & General Manager*

Moderator – Kevin Pavuk, **Structural Technologies**

Presentation 5:30 to 7:00 p.m.
Reception 7:00 to 8:00 p.m.





Dulles Corridor Metrorail Project Phase 2, Package A

Capital Rail Constructors Project Update

Jim Ansari
Capital Rail Constructors

APRIL 2018



Scope



Overall Project Status

<u>Design and Construction:</u>	81% Complete
▪ Construction Status:	80% Complete
▪ Design Status:	99.98% Complete

Facilities: Dulles Airport Station



- Platform Granite: Apr 2018 - May 2018
- Elevator Install: May 2018 - Aug 2018
- Storefront Glass: Feb 2018 - Jun 2018
- TPSS 16 Install: Ongoing
- Start Up Station AC Switchgear: Apr 2018

Innovation Station Pavilions



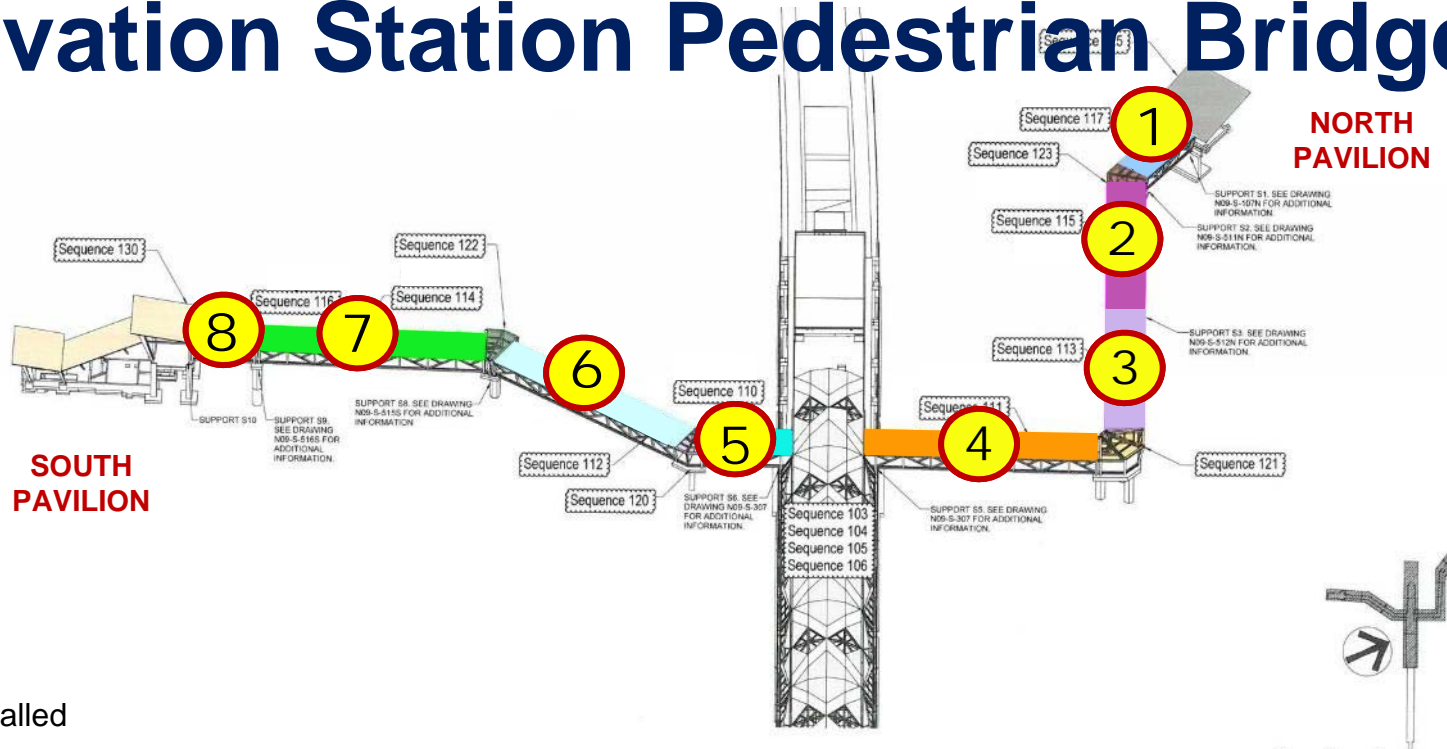
SOUTH:

- **Structural Precast:** Complete
- **Structural Steel:** 90% Complete

NORTH:

- **Retaining Wall:** 90% Complete
- **Site Ductbank:** Underway

Innovation Station Pedestrian Bridges



SOUTH: 4 Spans

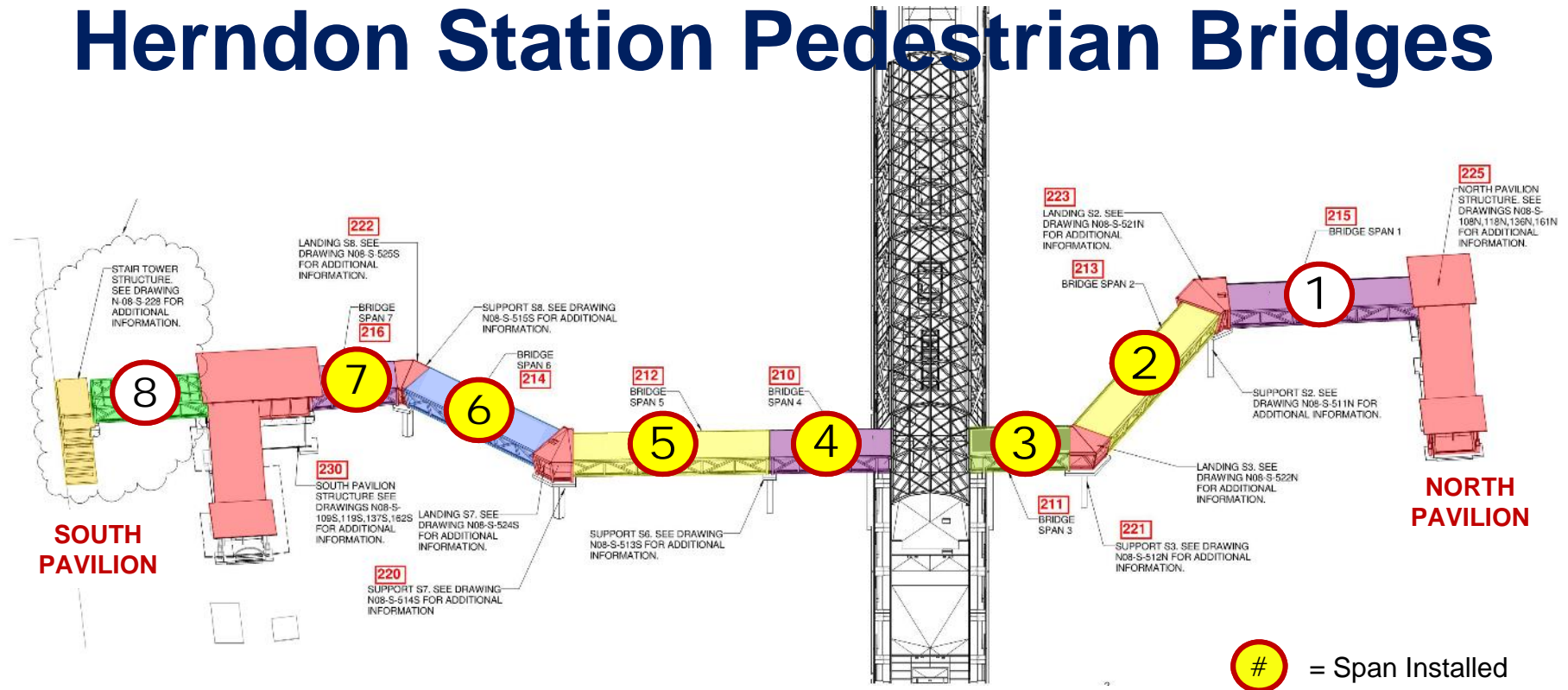
NORTH: 4 Spans

Facilities: Herndon Station



- | | |
|------------------------------|----------|
| ▪ Roofing: | Underway |
| ▪ Mezzanine Waterproofing: | Underway |
| ▪ Platform Paving: | Underway |
| ▪ Elevator Cab Installation: | Underway |

Herndon Station Pedestrian Bridges



SOUTH: 5 Spans

NORTH: 3 Spans

Facilities: Reston Town Center Station



▪ Mechanical Rough-In:	Jan 2017 - Fall 2018
▪ Roofing:	Sep 2017 - Jun 2018
▪ Elevator :	Starts Apr
▪ Curtain Wall (West Stair):	Starts Apr 2018
▪ Barrel Roof:	20% Complete
▪ Set Escalators:	25% Complete
▪ Topping Slab:	40% Complete
▪ Ceiling Framing:	70% Complete
▪ Concrete Masonry Units:	80% Complete
▪ EPDM Roof (Rubber Membrane):	90% Complete
▪ Precast:	Complete
▪ Steel Erection:	Complete
▪ Metal Decking:	Complete
▪ Curtain Wall (Mezz. Level):	Complete

Reston Town Center Station Pavilions



SOUTH:

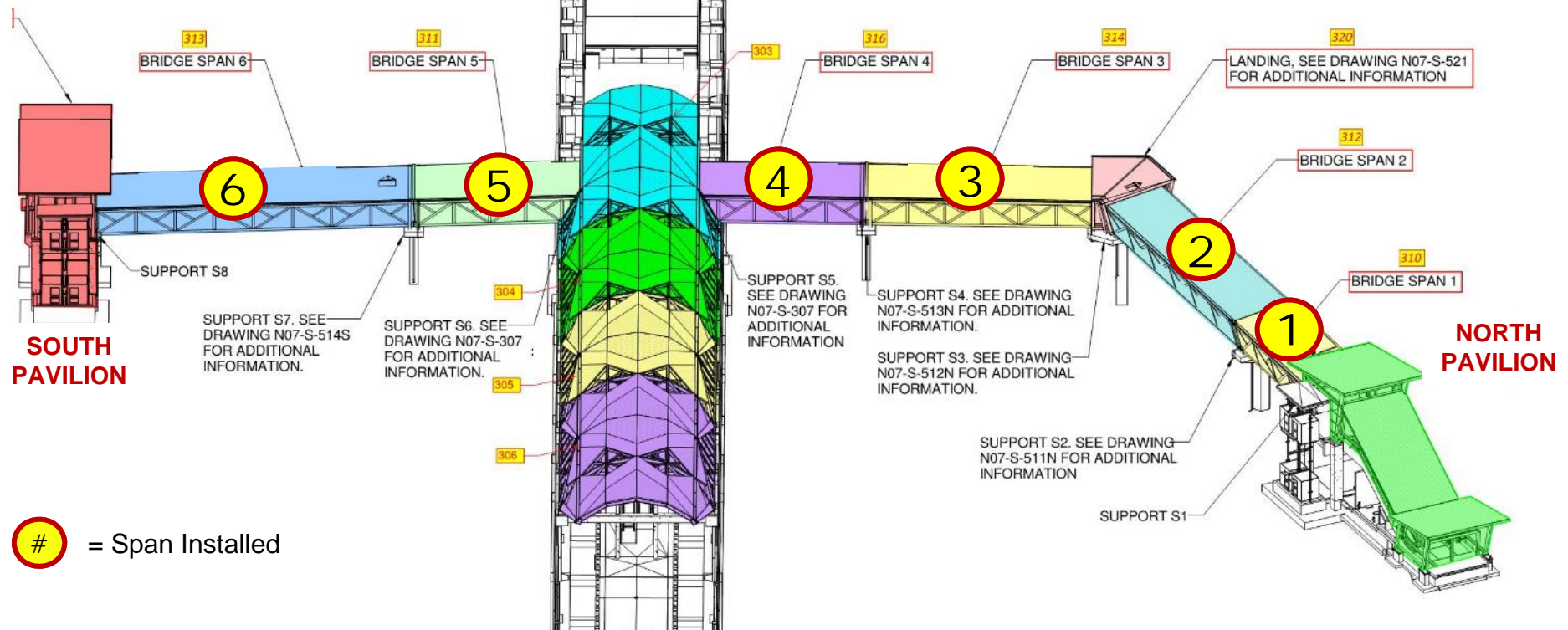
- | | |
|----------------------|---------------|
| ▪ Concrete Work: | 80% Complete |
| ▪ Pavilion Backfill: | Complete |
| ▪ Precast Erection: | Start Mid-Apr |



NORTH:

- | | |
|--------------------------|--------------|
| ▪ Precast Erection: | Complete |
| ▪ Escalator Setting: | Complete |
| ▪ Steel Canopy Erection: | 90% Complete |

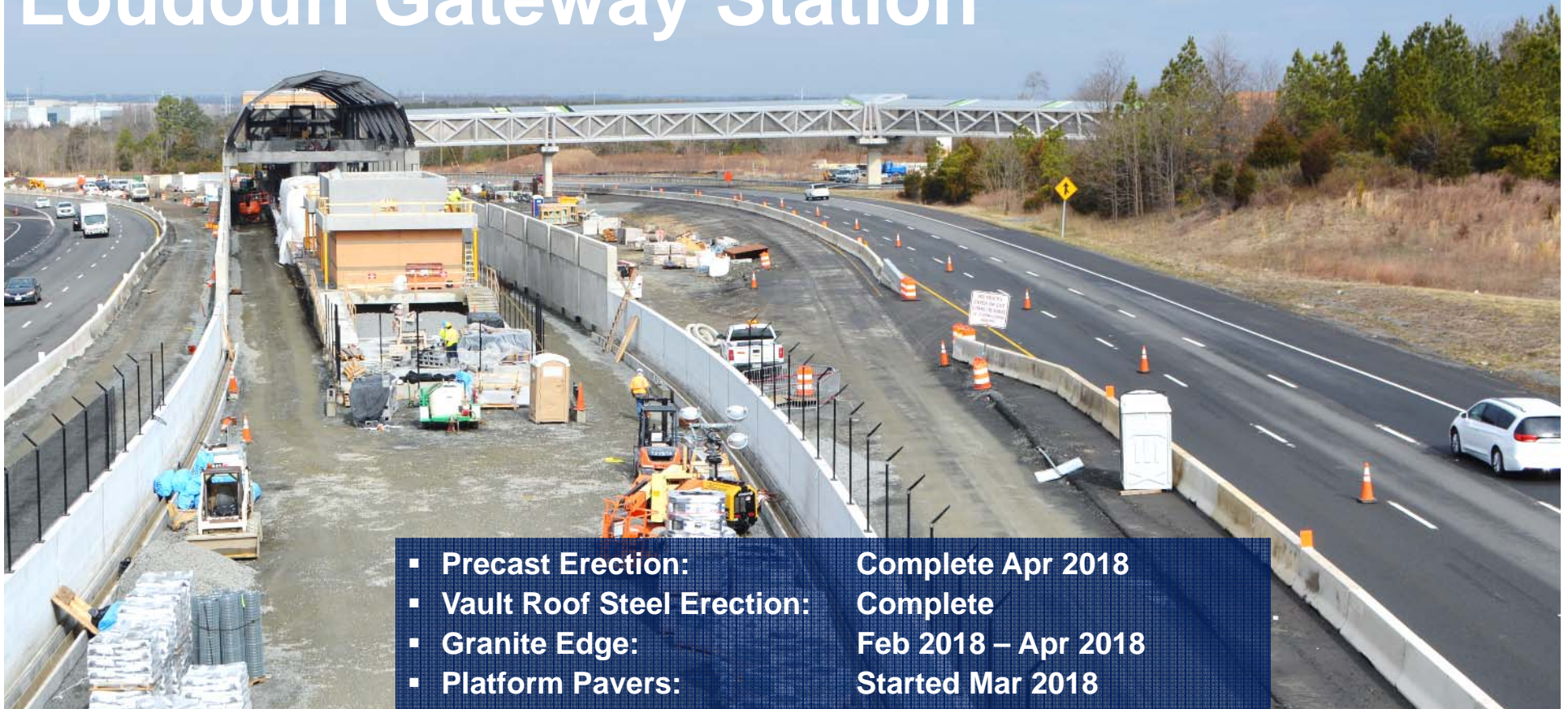
Reston Station Pedestrian Bridges



SOUTH: 2 Spans

NORTH: Spans 4

Loudoun Gateway Station



- | | |
|------------------------------|---------------------|
| ▪ Precast Erection: | Complete Apr 2018 |
| ▪ Vault Roof Steel Erection: | Complete |
| ▪ Granite Edge: | Feb 2018 – Apr 2018 |
| ▪ Platform Pavers: | Started Mar 2018 |

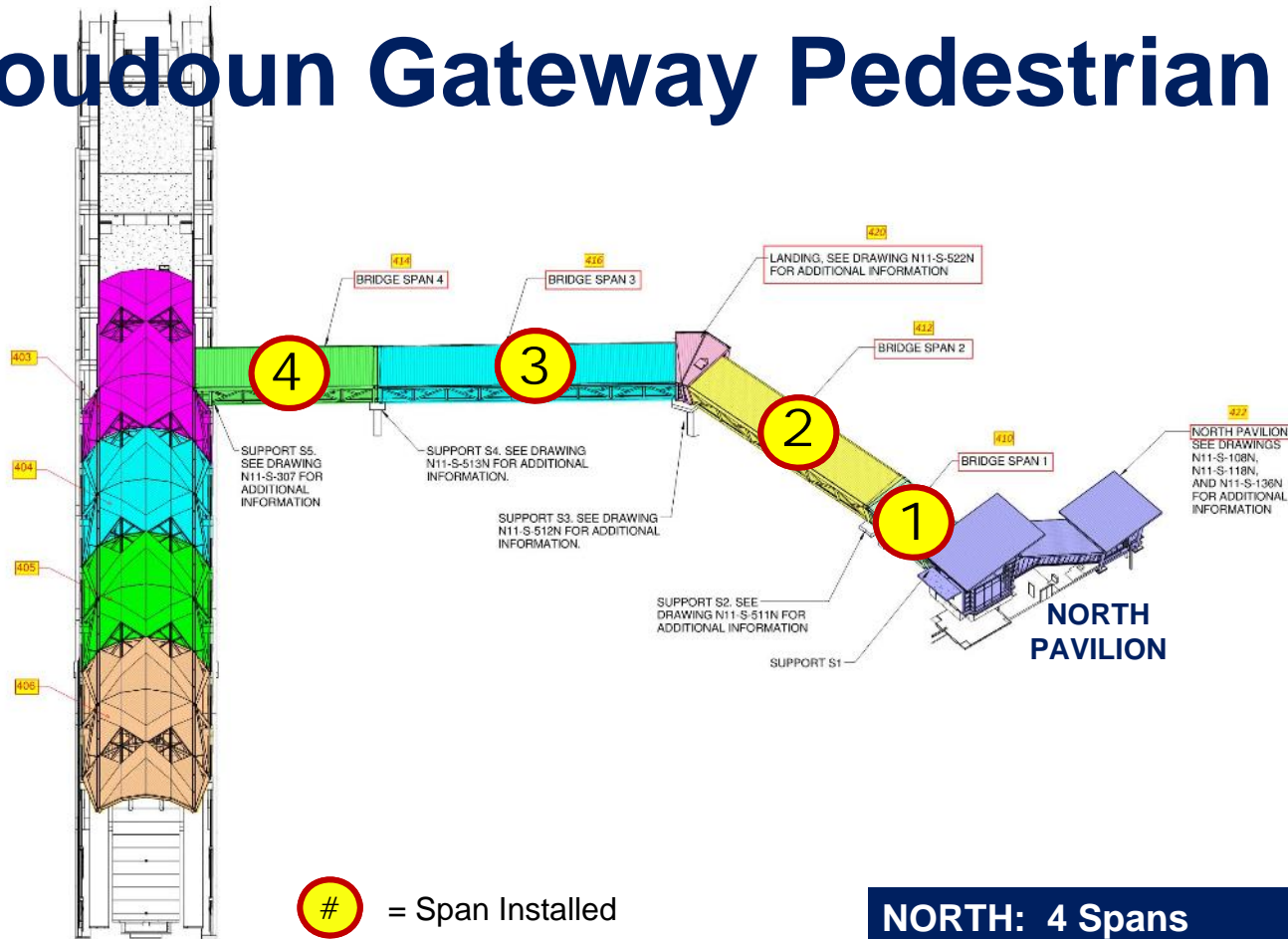
Loudoun Gateway Pavilion



NORTH:

- Cast-In-place Concrete: Complete
- Precast Erection: Feb 2018 – Apr 2018
- Escalators Set: Apr 2018

Loudoun Gateway Pedestrian Bridge



NORTH: 4 Spans



Loudoun Gateway Pedestrian Bridge



NORTH:

Topping Slab Spans 3-4:

Complete

Topping Slab Spans 1-2:

Complete

Facilities: Ashburn Station

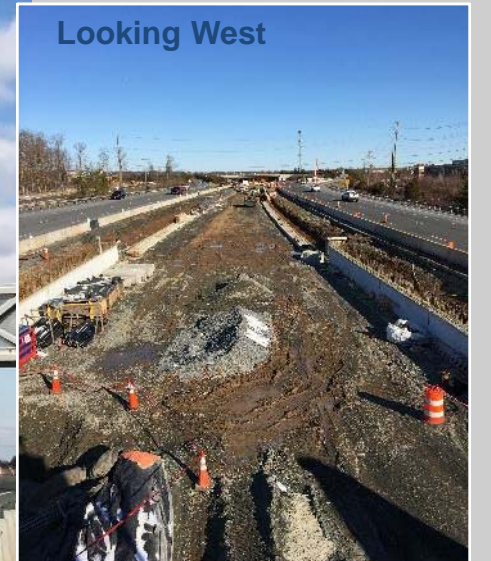
- Cast-In-Place Concrete: Jan 2017 – Apr 2018
- Precast Erection: May 2017 – Apr 2018
- Steel Erection: Jan 2018 – May 2018



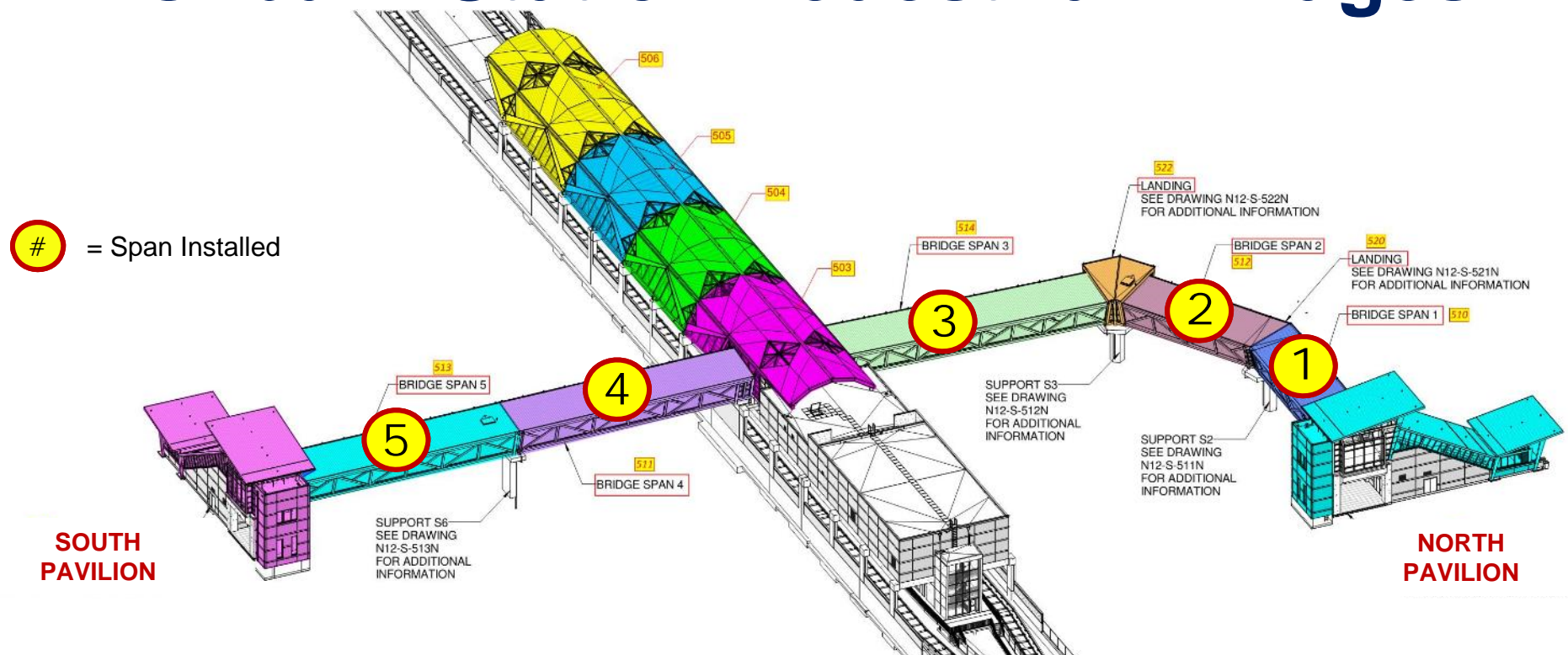
Looking East



Looking West



Ashburn Station Pedestrian Bridges



SOUTH: 2 Spans

NORTH: 3 Spans

Civil: Wayside Ductbank



- Tie Breaker Stations 8 & 20 Median:
- Traction Power Substation 20 Median Phase I:

Complete after Track Wall Installed Q2 & Q3
Active

Civil: Storm Drainage

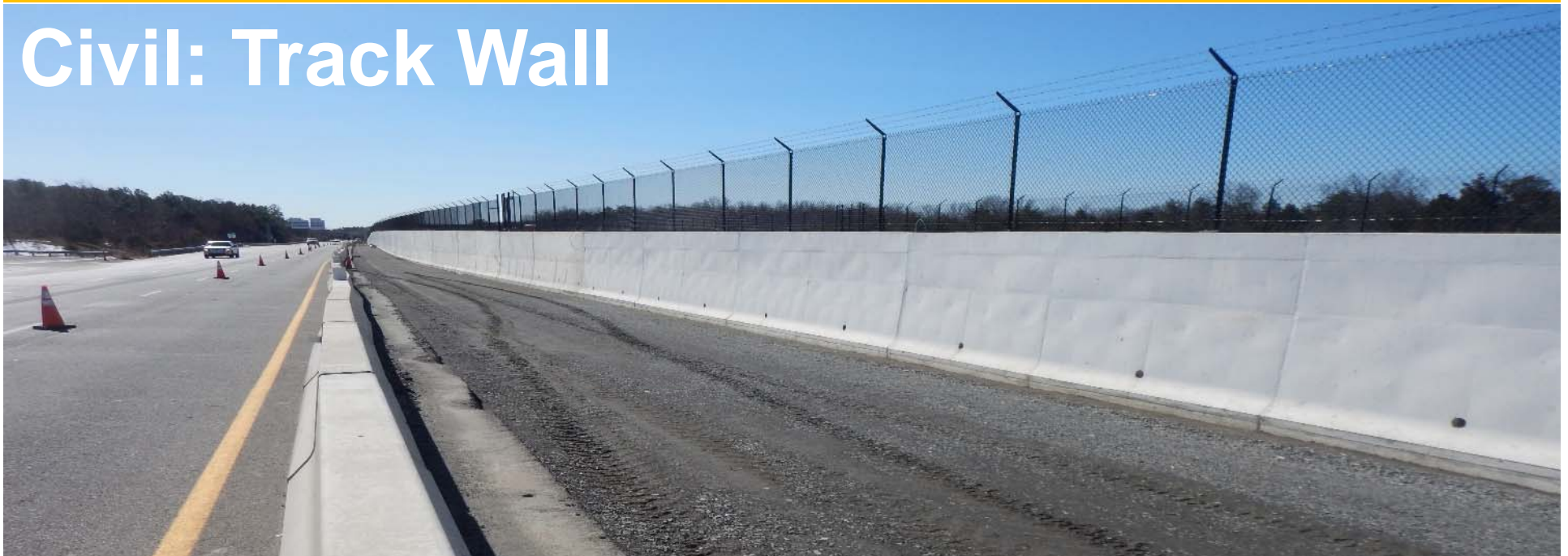
Storm/Wet Utilities:

- 73,500 of 86,400 Linear Feet
- Storm Pipe Installed: 85% Complete
- 9,000 of 22,400 Linear Feet of Water & Sewer Installed: 40% Complete
- Reston North & South Storm: Q2
- N09: DIAAH/DTR Median Storm: Q3
- Innovation North Water: Q2
- Ashburn North/South Water & Sewer: Q2
- Loudoun Gateway North Water & Sewer: Q2/3





Civil: Track Wall



Track Wall:

- Total Footer Installed: 72,000 of 75,000 Linear Feet: 96% Complete
- Total Wall Installed: 70,400 of 75,000 Linear Feet: 94% Complete
- East Segment: Close Leave-Outs (4 Each)
- West Segment: West of Loudoun Gateway and Ashburn Stations: Active



Civil: Grading/Excavation/Paving

East:

- | | |
|-----------------------------------------|--------|
| ▪ Phase I Tie-in Sub-Ballast: | May |
| ▪ Reston South Cistern: | Active |
| ▪ Herndon North Pavilion Excavation: | Active |
| ▪ DIAAH/DTR Road Widening Near Herndon: | Active |
| ▪ Innovation North DTR Retaining Wall: | Active |

West:

- | | |
|---------------------------------------------|--------|
| ▪ Shoulder/Sub-Ballast: Abutments B to YL: | Active |
| ▪ West of Loudoun Grading/Track Wall: | Active |
| ▪ East of Loudoun Duct Bank/Storm Drainage: | Active |
| ▪ Ponds 2-12 and 2-9 Construction: | Active |

Track: Cable Trough



- | | | |
|--------------------------------------|-------------------------------|--------------|
| ▪ Precast Cable Trough Installed: | 69,984 of 81,176 Linear Feet: | 86% Complete |
| ▪ Cast-In-Place Cable Trough Poured: | 38,520 of 38,520 Linear Feet: | Complete |

Track: Direct Fixated (DF) Plinths



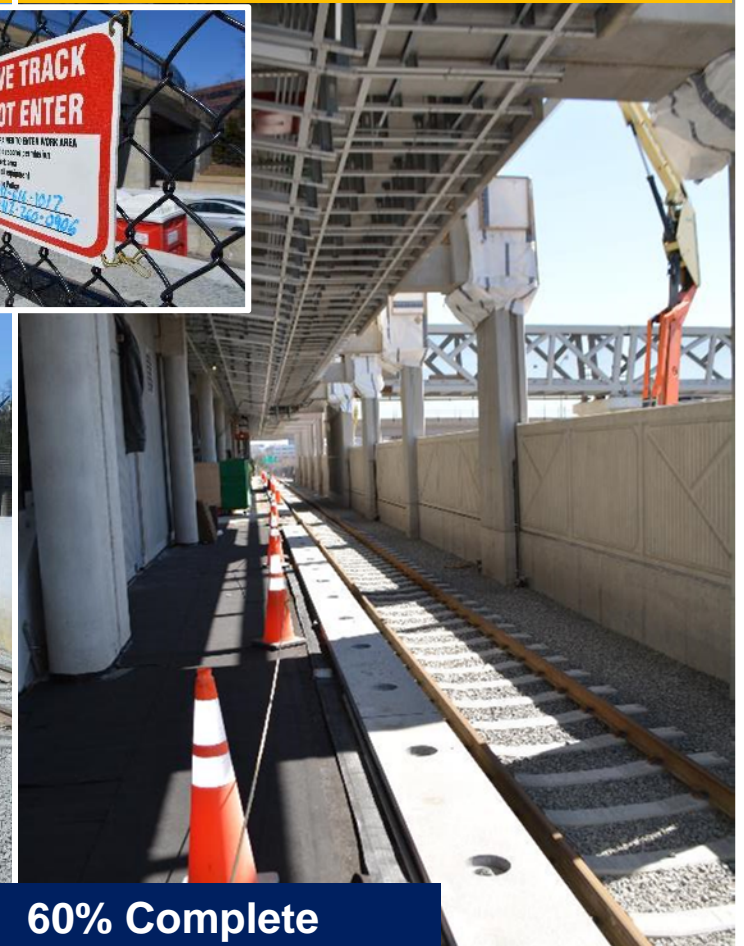
▪ Direct Fixated Track Plinth: 37,595 of 37,595 Track Feet Poured: Complete

Track: Contact Rail



▪ Contact Rail (Aerial Guideway):	31,116 of 40,750 Linear Feet Installed:	76% Complete
▪ Contact Rail (Ballasted Guideway):	24,400 of 88,446 Linear Feet Installed:	28% Complete
▪ Emergency Guard Rail:	40,694 of 46,760 Linear Feet installed:	87% Complete

Track: Ballasted



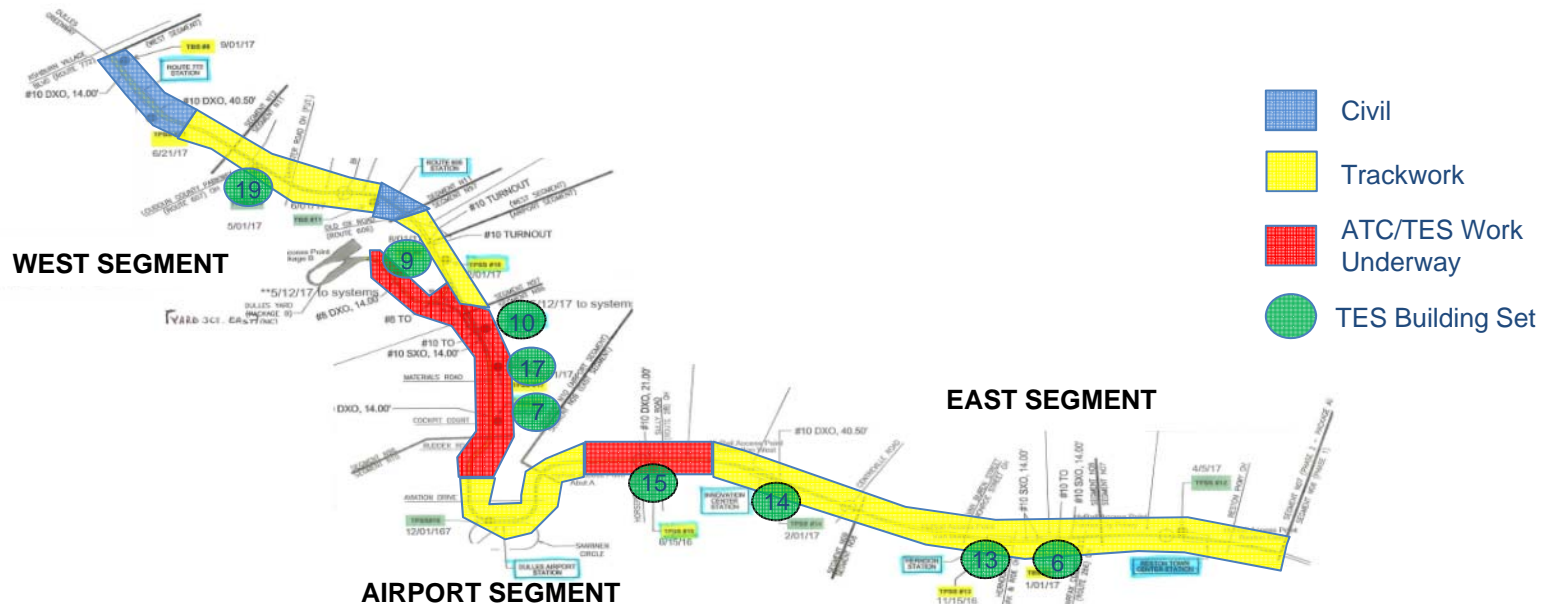
▪ Ties Set and Rail Clipped: 52,254 of 87,090 Total Feet: 60% Complete

Systems: Wayside Facilities/Power



- Traction Power Substations 13/14/15/17/18/19/20; Tie-Breaker Stations 6/7/9/10/11
- Train Control Room Buildout Complete for Automatic Train Control at Segment N97 and Underway at Segments N96/N09
- Automatic Train Control Cable Pulled and Devices Set at Segments N97/N96 and Underway at Segments N99E/N09
- Dominion Energy Vista Switch Yard Installations: Complete
- 95% of All 34.5kV Cable Has Been Installed, Spliced, and Terminated Project Wide
- Permanent 34.5kV Power Energized at Traction Power Substations 13/14/15/16/17/18

Start-up/Commissioning/Turnover



- Stations: Switchgear Testing begins April; Communications Installation Started at Dulles and Innovation Stations
- Guideway: Turnover to Systems 59% Complete at Segments N99E/N98A/N97/N10/N96/N09/N08
- Waysides: 93% of Buildings Set: Train-Braking Systems 6/7/9/10 and Traction Power Substations 12/13/14/15/17/18/19/20; Fit-Out Ongoing
- Overall: Finalizing Dynamic Testing Plans



@Reagan_Airport

@Dulles_Airport

@Dulles_Toll_Road



reaganairport

FlyDulles

dullestollroad

